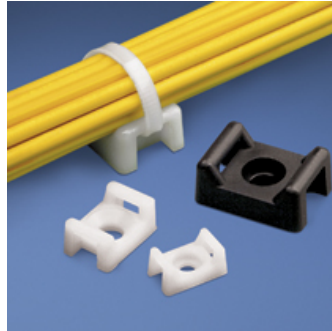




TM3S25-C



- Unique cradle design provides maximum stability for cable bundle
- Low profile design keeps bundle close to mounting surface where overhead space is limited
- ‡Cable tie cross section sizes: M = Miniature, I = Intermediate, S = Standard, HS = Heavy Standard, LH = Light-Heavy

| | |
|-----------------------------|---|
| ▪ Part Number | TM3S25-C |
| ▪ RoHS Compliancy Status | Compliant |
| ▪ Part Description | Cable Tie Mount - Screw Applied |
| ▪ Product Type | Cable Tie Mounts - Screw / Rivet Mounted |
| ▪ Material | Nylon 6.6 |
| ▪ Color | Natural |
| ▪ UL Recognized | E136577 |
| ▪ Height (In.) | .38 |
| ▪ Height (mm) | 9.6 |
| ▪ Length (In.) | .88 |
| ▪ Length (mm) | 22.3 |
| ▪ Width (In.) | .63 |
| ▪ Width (mm) | 16.0 |
| ▪ CE Compliant | CT-ACC2 / 10.96 |
| ▪ Environment | Indoors |
| ▪ Flammability Rating | UL94 V-2 |
| ▪ Hole Diameter (In.) | .26 |
| ▪ Hole Diameter (mm) | 6.6 |
| ▪ Max. Bundle Diameter (mm) | 7.6 |
| ▪ Mounting Method | 1/4 (M6) screw |
| ▪ Pricing Description | Cable Tie Mount, .62" (15.8mm)W, 1/4 Screw, Nylon |
| ▪ Screw Size | 1/4 (M6) |
| ▪ Screw Size Metric | M6 |
| ▪ Used With Cable Ties | M, I, S, LH |
| ▪ Min. Order UOM | PC |
| ▪ Min. Order Qty. | 100 |
| ▪ BOM Qty. (# of Pkgs.) | |

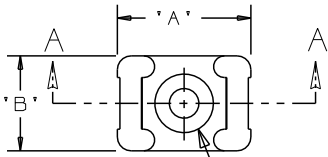
THIS COPY IS PROVIDED ON A RESTRICTED BASIS AND IS NOT TO BE USED IN ANY WAY DETRIMENTAL TO THE INTERESTS OF PANDUIT CORP.

| PANDUIT PART NO.* | MAT'L SUFFIX | RECOMMENDED FASTENER | 'A' | 'B' | 'C' | 'D' | 'E' | 'F' | 'G' 'REF' | 'H' 'REF' | 'I' 'REF' | USE WITH THESE CABLE TIE CROSS SECTIONS | WEIGHT (g) lbs/100 pcs. |
|-------------------|--------------------------|----------------------|-----------------|-----------------|----------------|----------------------------------|----------------------------------|----------------|----------------|-----------|-----------|--|-------------------------|
| TM3S8 | NONE -0 -30 -49 | #8 (M4) SCREW | 0.863 (21.9) | 0.610 (15.5) | 0.373 (9.4) | 0.320 (8.1) ±.020 (0.5) | 0.088 (2.2) ±.020 (0.5) | 0.208 (5.3) | 0.105 (2.7) | 0.325 | 0.180 | MINIATURE INTERMEDIATE STANDARD LT. HEAVY | 0.369 (167.5) |
| TM3S10 | NONE -0 -30 | #10 (M5) SCREW | | | | | | | 0.115 (2.9) | 0.385 | 0.200 | | 0.363 (165.0) |
| TM3S25 | NONE -0 -30 | 1/4" (M6) SCREW | 0.879 (22.3) | 0.629 (16.0) | 0.379 (9.6) | | | 0.210 (5.3) | 0.155 (3.9) | 0.506 | 0.262 | | 0.296 (134.5) |
| TM3S2510 | -30 -39 | #10 (M5) SCREW | 0.873 (22.2) | 0.620 (15.7) | | | | 0.212 (5.4) | 0.120 (3.0) | 0.480 | 0.200 | | 0.321 (145.5) |

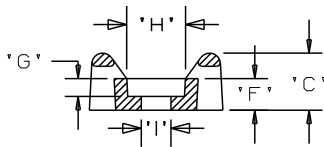
NOTES:

- *1. SEE CURRENT PRICE SHEET FOR PART NUMBER SUFFIX DESIGNATION FOR PACKAGE SIZE.
- 2. HOLE DIMENSIONS SHOULD ACCOMMODATE SPECIFIED RECOMMENDED FASTENER.

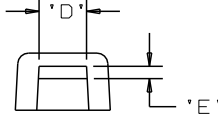
| MAT'L SUFFIX | MATERIAL | COLOR |
|--------------|-------------------------|---------|
| NONE | NYLON 6/6 | NATURAL |
| -0 | WEATHER RESISTANT NYLON | BLACK |
| -30 | HEAT STABILIZED NYLON | |
| -39 | HEAT STABILIZED NYLON | NATURAL |
| -49 | IMPACT MODIFIED NYLON | |



SEE NOTE 2



SECTION A-A



| | |
|--|---|
| DIMENSIONS IN BRACKETS ARE METRIC [mm] | |
| CAD FILENAME/LAYERS G00239EN_PB_TM3S_11 | |
| PANDUIT CORP. TINLEY PARK, ILLINOIS | |
| TM3S - TIE MOUNT | |
| UNLESS OTHERWISE SPECIFIED, DIMENSIONAL TOLERANCES ARE: (.X) ±0.05 (1.3) (.XXX) ±0.010 (0.25) (.XX) ±0.02 (0.5) ANGLES ±5° | UNLESS OTHERWISE SPECIFIED, ALL DIMENSIONS ARE GIVEN IN INCHES, THIRD ANGLE PROJECTION. |
| DRAWN BY AJV | MAT'L: SEE TABLE |
| DATE 12/17/96 | SCALE NONE |
| CHK'D | DRAWING NO. G0239EN |
| | DWG SIZE A |

| REV | DATE | BY | CHK | DESCRIPTION | ECN | R | CUST | SUP |
|-----|----------|------|-----|--|----------|----|------|-----|
| 11 | 4/16/07 | DJSM | | ADDED DECIMAL PLACE TO TABLE, REMOVED MATERIALS -69 AND -100 | GB0239EN | 11 | | |
| 10 | 03/19/07 | DJSM | | ADDED TM3S2510, ADDED MATERIAL -39, CHANGED TOLERANCES | GB0239EN | 10 | | |