



Series image - Reference only

EU RoHS

**ELV and RoHS Compliant**

China RoHS



### Search Parts in this Series

84702 Series

### Mates With

847000001 Modular Jack

EtherNet/IP™ PCB Mount Receptacle Jack 847020005, 847020007

EtherNet/IP™ Punchdown Panel Mount Receptacle Jack 847020006,  
847020008

**Part Number:** **0847023020**

**Status:** **Active** **Overview:** RJ-45 Ethernet

**Description:** Ethernet/IP™ Single End IP67 Bayonet Plug 6.10m (20.0' )  
Length

### General

Product Family	Cable Assemblies
Series	<u>84702</u>
Comments	Industrial Type, Gray Cable, Black Overmold
Connector to Connector	RJ-45 to Pigtail
Overview	<u>RJ-45 Ethernet</u>
Product Name	Industrial
Product Name	RJ45

### Physical

Cable Length	6.10m (20.0' )
Circuits (Loaded)	8/8
Color - Resin	Black
Gender	Male-Pigtail
Lock to Mating Part	Yes
Material - Resin	Polyester
Material - Resin	PVC
Packaging Type	Bag
Single Ended	Yes
Termination Interface: Style	N/A
Waterproof / Dustproof	Yes
Waterproof / Dustproof Type	IP67
Wire Insulation Diameter	N/A
Wire Size AWG	24
Wire/Cable Type	Round

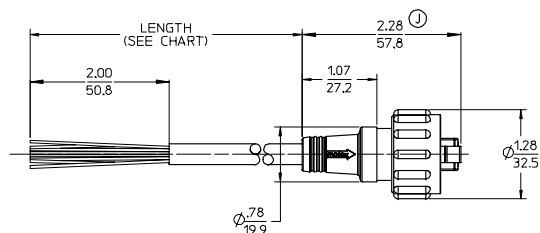
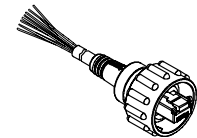
### Electrical

Current - Maximum	1.500 Amp
Shielded	Yes
Voltage - Maximum	125V

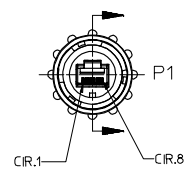
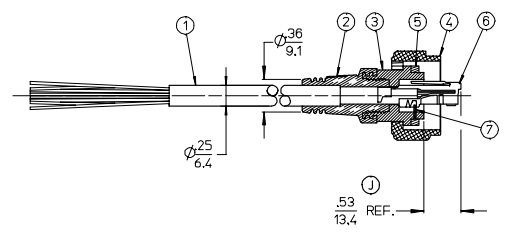
### Material Info



MATERIAL NO.	FINISHED LENGTH
847023001	10' +1/4"-0 [ .3M +6.4mm-0 ]
847023003	30' +3/4"-0 [ .9M +19mm-0 ]
847023006	60' +1 1/2"-0 [ 1.8M +38mm-0 ]
847023009	9' 0' +2 1/2"-0 [ 2.74M +64mm -0 ]
847023012	12' 0'+3"-0 [ 3.7M +76mm-0 ]
847023020	20' 0' +5'-0 [ 6.1M +127mm-0 ]
847023050	50' 0' +12 1/2"-0 [ 15.2M +318mm-0 ]
847023100	100' 0' +25'-0 [ 30.5M +635mm-0 ]



- NOTES:
1. MATERIAL: SEE TABLE
  2. FINISHES: SEE TABLE
  3. PRODUCT SPECIFICATION: PPS.84.006
  4. MATES WITH BAYONET STYLE RJ-45 JACK ASSEMBLIES
  5. CABLE IS UL RATED TYPE MPR/CMR
  6. COUPLING RING AND HOLDER MEET UL 746C/UV
  7. ASSEMBLY IS RoHS COMPLIANT.



P2		P1
1	WHITE-ORANGE	1
2	ORANGE	2
3	WHITE-GREEN	3
4	BLUE	4
5	WHITE-BLUE	5
6	GREEN	6
7	WHITE-BROWN	7
8	BROWN	8
9	DRAN	9

RJ-45 PLUG      RJ-45 PLUG

ITEM	QTY	DESCRIPTION	MATERIAL	FINISH
7	1	WEDGE	POLYESTER	BLACK
6	1	RJ-45 PLUG, SHELDED	PER VENDOR SPEC.	GOLD PL. CONTACTS
5	1	GASKET SEAL	NITRILE	BLACK
4	1	RJ-45 COUPLING RING	POLYESTER	BLACK
3	1	RJ-45 HOLDER	POLYESTER	BLACK
2	1	OVERMOLD BODY	PVC	BLACK
1	1	CABLE, UTP, 4P, 24 AWG, CAT 6	PVC JACKET	BLACK

REDRAWN: MOVED #6 .040 EC NO. ETC2007-0379 DRAWN: THRODHL 2007/04/19 CHECKED: STONE 2007/05/10 APPR: JMCNEIL 2007/05/11	QUALITY SYMBOLS	GENERAL TOLERANCES (UNLESS SPECIFIED)	DIMENSION STYLE	SCALE	DESIGN UNITS	THIRD ANGLE PROJECTION
	▽=0	4 PLACES ± --- ± ---	IN/MM	1:1	INCH	
	▽=0	3 PLACES ± --- ± ---				
		2 PLACES ± --- ± .01				
		1 PLACE ± 0.25 ± ---				
		ANGULAR ±1/2°				
		DRAFT WHERE APPLICABLE MUST REMAIN WITHIN DIMENSIONS	SEE CHART			
			MATERIAL NO.	DOCUMENT NO.	SHEET NO.	
					1 OF 1	
			THIS DRAWING CONTAINS INFORMATION THAT IS PROPRIETARY TO MOLEX INCORPORATED AND SHOULD NOT BE USED WITHOUT WRITTEN PERMISSION			

TITLE: CORD ASSEMBLY, RJ-45 MALE BAYONET, SNGL ENDED

APPROVED BY: ROBERTSON 2003/08/15

DATE: 2003/08/15

MOLEX MOLEX INCORPORATED

SD-84702-003