

Series image - Reference only

EU RoHS

China RoHS

ELV and RoHS Compliant



Duration at Max. Process Temperature (seconds) 5

Lead-free Process Capability

Wave Capable (TH only)

Max. Cycles at Max. Process Temperature

1

Process Temperature max. C

235

Search Parts in this Series

[41791 Series](#)

Mates With

[3069](#), [2139](#), [2145](#), [6442](#), [7674](#), [7675](#), [41695](#), [41815](#)

Part Number: **0026604080**

Status: **Active**

Description: 3.96mm (.156") Pitch KK® Solid Header, Vertical, Friction Lock, 8 Circuits, Tin (Sn) Plating

Documents:

- [Drawing \(PDF\)](#)
- [Product Specification PS-08-50 \(PDF\)](#)
- [3D Model](#)
- [Packaging Specification \(PDF\)](#)
- [Related Catalog Page \(PDF\)](#)

Order Products:

[Check Distributor Inventory](#)

Part Detail: [\(show all\)](#)○ **General**○ **Physical**○ **Electrical**○ **Material Info**○ **Reference - Drawing Numbers****General**

| | |
|----------------|-----------------------|
| Product Family | PCB Headers |
| Series | 41791 |
| Application | Wire-to-Board |
| Product Name | KK® |

Physical

| | |
|--------------------------------|-----------|
| Breakaway | No |
| Circuits (Loaded) | 8 |
| Circuits (maximum) | 8 |
| Color - Resin | Natural |
| Durability (mating cycles) min | 25 cycles |
| Flammability | 94V-0 |
| Lock to Mating Part | Yes |
| Material - Metal | Brass |
| Material - Plating Mating | Tin |
| Material - Plating Termination | Tin |
| Material - Resin | Polyester |
| Number of Rows | 1 |
| Orientation | Vertical |
| PC Tail Length (in) | 0.140 In |
| PC Tail Length (mm) | 3.56 mm |
| PCB Locator | No |
| PCB Retention | None |
| PCB Thickness Recommended (in) | 0.062 In |
| PCB Thickness Recommended (mm) | 1.60 mm |
| Packaging Type | Bag |
| Pitch - Mating Interface (in) | 0.156 In |
| Pitch - Mating Interface (mm) | 3.96 mm |
| Plating min: Mating (uin) | 200 |
| Plating min: Mating (um) | 5 |
| Plating min: Termination (uin) | 200 |
| Plating min: Termination (um) | 5 |
| Polarized to Mating Part | Yes |
| Polarized to PCB | No |

| | |
|-------------------------------|--------------|
| Shrouded | Partial |
| Stackable | Yes |
| Temperature Range - Operating | 0°C to +75°C |
| Termination Interface: Style | Through Hole |

Electrical

| | |
|-------------------|----------|
| CSA | LR19980 |
| Current - Maximum | 7.00 Amp |
| UL | E29179 |
| Voltage - Maximum | 250V |

Material Info

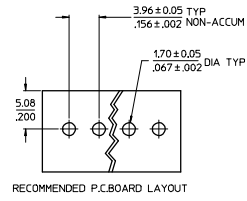
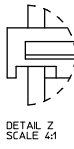
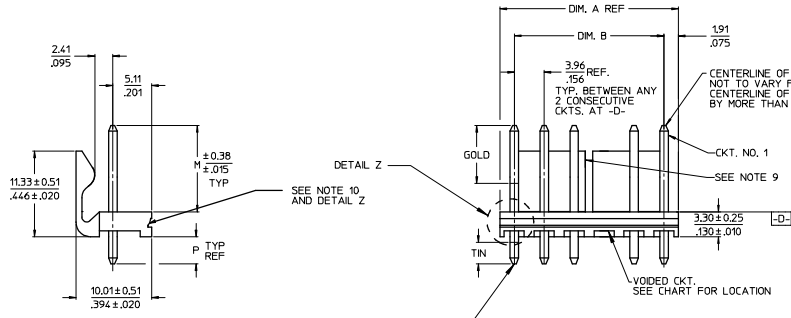
| | |
|-----------------|------------|
| Old Part Number | 41791-0008 |
|-----------------|------------|

Reference - Drawing Numbers

| | |
|-----------------------|-----------|
| Product Specification | PS-08-50 |
| Sales Drawing | SDA-41791 |

41791

| CKT | DIM. A | DIM. B | SLOT LOC BETWEEN CKTS |
|-----|--------|------------|-----------------------|
| 2 | 7.77 | 3.96±0.05 | NONE |
| | .306 | .156±.002 | |
| 3 | 11.73 | 7.92±0.08 | NONE |
| | .462 | .312±.003 | |
| 4 | 15.70 | 11.89±0.08 | NONE |
| | .618 | .468±.003 | |
| 5 | 19.66 | 15.85±0.10 | NONE |
| | .774 | .624±.004 | |
| 6 | 23.62 | 19.81±0.10 | 3 & 4 |
| | .930 | .780±.004 | |
| 7 | 27.58 | 23.77±0.10 | 4 & 5 |
| | 1.086 | .936±.004 | |
| 8 | 31.55 | 27.74±0.13 | 4 & 5 |
| | 1.242 | 1.092±.005 | |
| 9 | 35.51 | 31.70±0.13 | 5 & 6 |
| | 1.398 | 1.248±.005 | |
| 10 | 39.47 | 35.66±0.13 | 5 & 6 |
| | 1.554 | 1.404±.005 | |
| 11 | 43.43 | 39.62±0.15 | 6 & 7 |
| | 1.710 | 1.560±.006 | |
| 12 | 47.40 | 43.59±0.15 | 4 & 5 |
| | 1.866 | 1.716±.006 | 8 & 9 |
| 13 | 51.36 | 47.55±0.15 | 4 & 5 |
| | 2.022 | 1.872±.006 | 9 & 10 |
| 14 | 55.32 | 51.51±0.18 | 5 & 6 |
| | 2.178 | 2.028±.007 | 9 & 10 |
| 15 | 59.28 | 55.47±0.18 | 5 & 6 |
| | 2.334 | 2.184±.007 | 10 & 11 |
| 16 | 63.25 | 59.44±0.18 | 5 & 6 |
| | 2.490 | 2.340±.007 | 11 & 12 |
| 17 | 67.21 | 63.40±0.20 | 6 & 7 |
| | 2.646 | 2.496±.008 | 11 & 12 |
| 18 | 71.17 | 67.36±0.20 | 6 & 7 |
| | 2.802 | 2.652±.008 | 12 & 13 |



- NOTES:
- MATERIAL: HEADER-GLASS FILLED POLYESTER, 94V-0, MOLDED NATURAL (WHITE).
 - FINISH: (102-TIN) OVERALL TIN: 0.00508/0.000200 MIN OVER 0.00254/0.000100 MIN COPPER. (122-TIN) OVERALL TIN: 0.00381/0.000150 MIN OVER 0.00076/0.000030 MIN NICKEL. (208-15 GOLD) SELECT GOLD: 0.00038/0.000015 MIN. SELECT TIN: 0.00254/0.000100 MIN. OVERALL NICKEL UNDERPLATE: 0.00127/0.000050 MIN. (228-30 GOLD) SELECT GOLD: 0.00076/0.000030 MIN. SELECT TIN: 0.00254/0.000100 MIN. OVERALL NICKEL UNDERPLATE: 0.00127/0.000050 MIN. (501-GOLD) OVERALL GOLD: 0.00051/0.000020 MIN OVER 0.00076/0.000030 MIN NICKEL.
 - THE PRIMARY SHIPPING CARTON WILL BE LABELED "COMPLIANT TO RoHS DIRECTIVE 2002/95/EC AND ELV ANNEX II OF DIRECTIVE 2000/53/EC". CARTONS WITHOUT THIS LABEL MAY CONTAIN PRODUCT WITH TIN-LEAD PLATING.
 - PRODUCT SPECIFICATION AND PROCESS PARAMETERS: SEE PS-08-50.
 - PACKAGING INFORMATION: SEE CHARTS.
 - SOLDERABILITY: PER S9ES-152.
 - PIN PUSH-OUT FORCE: PRIOR TO SOLDERING, A 3 LB. MINIMUM FORCE (IN EITHER DIRECTION)
 - PARTS ARE STACKABLE END TO END ON 3.96/.156 CENTERS.
 - THIS PART CONFORMS TO CLASS B REQUIREMENTS OF COSMETIC SPECIFICATION PS-45499-002.
 - SLOTS ON BACKWALL ARE BETWEEN CIRCUITS. SEE CHART FOR LOCATION.
 9. SLOTS ON BACKWALL ARE BETWEEN CIRCUITS. SEE CHART FOR LOCATION.
 - 10 FEATURE MAY OR MAY NOT EXTEND ACROSS THE ENTIRE FACE OF THE PART "SEE DETAIL Z."

| | | | | | | | | |
|-------------------------------------------------------------------------------------------------------------------|-------------------------------|-------------------------------------------------------------------------------------------------------------------|---------------------------------------------------------------------------------------------------------------------|-------------------------------------------------------------------------------------------------------------|--|------------------------|-------------------|------------------------|
| ADD EDP FOR -0467 EC NO. UCP2008-2196 DR:WALHAG 2008/03/19 CHK:ADERR 2008/03/19 APPR:FSMTH 2008/03/20 | QUALITY SYMBOLS ▽=0 ▽=0 | GENERAL TOLERANCES (UNLESS SPECIFIED) | | DIMENSION STYLE MM/IN | | SCALE 2:1 | DESIGN UNITS INCH | THIRD ANGLE PROJECTION |
| | | 4 PLACES ± --- ± --- 3 PLACES ± --- ± .010 2 PLACES ± 0.25 ± .015 1 PLACE ± 0.38 ± --- ANGULAR ± 1/2° | DRAWN BY JSCHAFFER CHECKED BY KSAMIEC APPROVED BY MARGULIS DATE 11-07-03 DATE 11-10-03 DATE 11-17-03 | TITLE KK 156 HEADER ASSEMBLY FRICTION LOCK VERTICAL SOLID BODY W/O PEGS | | | | |
| 2-x P8 1 P9 SHT REV | P9 | DRAFT WHERE APPLICABLE MUST REMAIN WITHIN DIMENSIONS | | SEE CHART | | MATERIAL NO. SDA-41791 | DOCUMENT NO. | SHEET NO. 1 OF * |

| OPTIONS | Group | A-41791-0002/0018 | Group | A-41791-0832/0848 | Group | A-41791-0849/0865 | Group | A-41791-0773/0785 |
|----------|--------------|-------------------|--------------|-------------------|--------------|-------------------|--------------|-------------------|
| | Header No: | 41790-0002/0018 | Header No: | 41790-0002/0018 | Header No: | 41790-0002/0018 | Header No: | 41790-0006/0018 |
| | Pin No: | 2161-94(102) | Pin No: | 43294-0209 | Pin No: | 43294-0210 | Pin No: | 2161-94(102) |
| | Plating: | 102 – TIN | Plating: | 208 – 15 GOLD | Plating: | 228 – 30 GOLD | Plating: | 102 – TIN |
| | Pin Length L | 18.29 / .720 | Pin Length L | 18.29/. 720 | Pin Length L | 18.29/. 720 | Pin Length L | 18.29 / .720 |
| | Mating M | 11.43 / .450 | Mating M | 11.43/. 450 | Mating M | 11.43/. 450 | Mating M | 11.43 / .450 |
| | Gold Loc G | N/A | Gold Loc G | 6.86/. 270 | Gold Loc G | 6.86/. 270 | Gold Loc G | N/A |
| | PC Tail P | 3.56 / .140 | PC Tail P | 3.56/. 140 | PC Tail P | 3.56/. 140 | PC Tail P | 3.56 / .140 |
| | Tin Loc T | OVERALL | Tin Loc T | 4.06/. 160 | Tin Loc T | 4.06/. 160 | Tin Loc T | OVERALL |
| | Voided Ckts | NONE | Voided Ckts | NONE | Voided Ckts | NONE | Voided Ckts | 3, 6 |
| Pack Per | PK-41791-001 | Pack Per | PK-41791-001 | Pack Per | PK-41791-001 | Pack Per | PK-41791-001 | |
| Ckts | Material No | Engineer Number | Material No | Engineer Number | Material No | Engineer Number | Material No | Engineer Number |
| 2 | 26-60-4020 | A-41791-0002 | 41791-0832 | A-41791-0832 | 41791-0849 | A-41791-0849 | | |
| 3 | 26-60-4030 | A-41791-0003 | 41791-0833 | A-41791-0833 | 41791-0850 | A-41791-0850 | | |
| 4 | 26-60-4040 | A-41791-0004 | 41791-0834 | A-41791-0834 | 41791-0851 | A-41791-0851 | | |
| 5 | 26-60-4050 | A-41791-0005 | 41791-0835 | A-41791-0835 | 41791-0852 | A-41791-0852 | | |
| 6 | 26-60-4060 | A-41791-0006 | 41791-0836 | A-41791-0836 | 41791-0853 | A-41791-0853 | | |
| 7 | 26-60-4070 | A-41791-0007 | 41791-0837 | A-41791-0837 | 41791-0854 | A-41791-0854 | 41791-0774 | A-41791-0774 |
| 8 | 26-60-4080 | A-41791-0008 | 41791-0838 | A-41791-0838 | 41791-0855 | A-41791-0855 | | |
| 9 | 26-60-4090 | A-41791-0009 | 41791-0839 | A-41791-0839 | 41791-0856 | A-41791-0856 | | |
| 10 | 26-60-4100 | A-41791-0010 | 41791-0840 | A-41791-0840 | 41791-0857 | A-41791-0857 | | |
| 11 | 26-60-4110 | A-41791-0011 | 41791-0841 | A-41791-0841 | 41791-0858 | A-41791-0858 | | |
| 12 | 26-60-4120 | A-41791-0012 | 41791-0842 | A-41791-0842 | 41791-0859 | A-41791-0859 | | |
| 13 | 26-60-4130 | A-41791-0013 | 41791-0843 | A-41791-0843 | 41791-0860 | A-41791-0860 | | |
| 14 | 26-60-4140 | A-41791-0014 | 41791-0844 | A-41791-0844 | 41791-0861 | A-41791-0861 | | |
| 15 | 26-60-4150 | A-41791-0015 | 41791-0845 | A-41791-0845 | 41791-0862 | A-41791-0862 | | |
| 16 | 26-60-4160 | A-41791-0016 | 41791-0846 | A-41791-0846 | 41791-0863 | A-41791-0863 | | |
| 17 | 26-60-4170 | A-41791-0017 | 41791-0847 | A-41791-0847 | 41791-0864 | A-41791-0864 | | |
| 18 | 26-60-4180 | A-41791-0018 | 41791-0848 | A-41791-0848 | 41791-0865 | A-41791-0865 | | |

| | | | |
|----------------------------------------------|-------------------------------------------------------|---------------------------------------------------------------------------------------------------|--------------------------------------|
| REV: P8 | <u>ECR/ECN INFORMATION</u> | <u>TITLE:</u> KK 156 HEADER ASSEMBLY FRICTION LOCK VERTICAL SOLID BODY W/O PEGS | <u>SHEET No.</u> - 2 - |
| | EC NO.: UCP2008-2196 DATE: 3/26/2008 | | |
| <u>DOCUMENT NUMBER:</u> SDA- 41791 | <u>CREATED / REVISED BY:</u> AELHAG | <u>CHECKED BY:</u> ADERR | <u>APPROVED BY:</u> FSMITH |

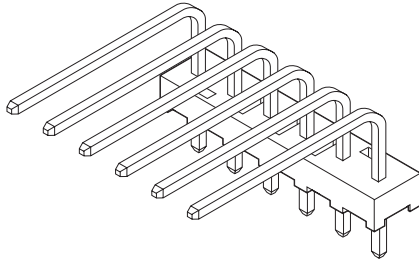
3.96mm (.156") Pitch

KK®

Solid Header

41772

Right Angle Without Pegs



Features and Benefits

- Sizes 2 to 18 circuits
- Optional voided circuits available (contact Molex)
- Various pin lengths available (contact Molex)
- End-to-end stackable

Reference Information

Product Specification: PS-08-50
 Packaging: Bag
 UL File No.: E29179
 CSA File No.: LR19980
 TUV File No.: R75108
 Mates With: 2139, 2145, 3069, 6442, 7674, 7675, 41695 and 41815
 Designed In: Inches

Electrical

Voltage: 250V
 Current: 7.0A
 Contact Resistance: 6 milliohms max.
 Dielectric Withstanding Voltage: 1500V
 Insulation Resistance: 50,000 Megohms min.

Mechanical

Durability:
 Tin—25 cycles max.
 Gold—100 cycles max.

Physical

Housing: Polyester, UL 94V-0
 Contact: Brass, 1.14mm (.045") square
 Plating: See Table
 Operating Temperature: -40 to +105°C

| Circuits | Order No. | | | |
|----------|------------|------------------|------------------|--------------|
| | Tin | 15µ" Select Gold | 30µ" Select Gold | Overall Gold |
| 2 | 26-60-3020 | 41772-0463 | 41772-0480 | 26-61-3020 |
| 3 | 26-60-3030 | 41772-0464 | 41772-0481 | 26-61-3030 |
| 4 | 26-60-3040 | 41772-0465 | 41772-0482 | 26-61-3040 |
| 5 | 26-60-3050 | 41772-0466 | 41772-0483 | 26-61-3050 |
| 6 | 26-60-3060 | 41772-0467 | 41772-0484 | 26-61-3060 |
| 7 | 26-60-3070 | 41772-0468 | 41772-0485 | 26-61-3070 |
| 8 | 26-60-3080 | 41772-0469 | 41772-0486 | 26-61-3080 |
| 9 | 26-60-3090 | 41772-0470 | 41772-0487 | 26-61-3090 |
| 10 | 26-60-3100 | 41772-0471 | 41772-0488 | 26-61-3100 |

| Circuits | Order No. | | | |
|----------|------------|------------------|------------------|--------------|
| | Tin | 15µ" Select Gold | 30µ" Select Gold | Overall Gold |
| 11 | 26-60-3110 | 41772-0472 | 41772-0489 | 26-61-3110 |
| 12 | 26-60-3120 | 41772-0473 | 41772-0490 | 26-61-3120 |
| 13 | 26-60-3130 | 41772-0474 | 41772-0491 | 26-61-3130 |
| 14 | 26-60-3140 | 41772-0475 | 41772-0492 | 26-61-3140 |
| 15 | 26-60-3150 | 41772-0476 | 41772-0493 | 26-61-3150 |
| 16 | 26-60-3160 | 41772-0477 | 41772-0494 | 26-61-3160 |
| 17 | 26-60-3170 | 41772-0478 | 41772-0495 | 26-61-3170 |
| 18 | 26-60-3180 | 41772-0479 | 41772-0496 | 26-61-3180 |

Circuit number designation is for ordering purposes only, check corresponding circuit designation on mating connector

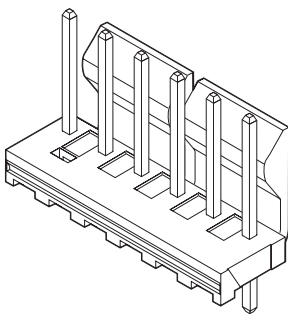
3.96mm (.156") Pitch

KK®

Solid Header

41791

Vertical, Friction Lock



Features and Benefits

- Sizes 2 to 18 circuits
- Provides left to right polarization when mated with 41695 or 43061 .156" crimp housing with the optional polarizing ribs
- Various pin lengths available
- Voided circuits available (contact Molex)
- Passive locking feature is used to maintain interconnection, ideal for high vibration applications
- End-to-end stackable

Reference Information

Product Specification: PS-08-50
 Packaging: Bag
 UL File No.: E29179
 CSA File No.: LR19980
 TUV File No.: R75108
 Mates With: 2139, 2145, 3069, 6442, 7674, 7675, 41695 and 41815
 Designed In: Inches

Electrical

Voltage: 250V
 Current: 7.0A
 Contact Resistance: 6 milliohms max.
 Dielectric Withstanding Voltage: 1500V
 Insulation Resistance: 50K Megohms min.

Mechanical

Durability: Tin—25 cycles max.
 Gold—100 cycles max.

Physical

Housing: Polyester, UL 94V-0
 Contact: Brass, 1.14mm (.045") pin
 Plating: See Table
 Operating Temperature: 0 to +75°C

| Circuits | Order No. | | | | Lead-free |
|----------|------------|------------------|------------------|--------------|-----------|
| | Tin | 15µ" Select Gold | 30µ" Select Gold | Overall Gold | |
| 2 | 26-60-4020 | 41791-0832 | 41791-0849 | 26-61-4020 | Yes |
| 3 | 26-60-4030 | 41791-0833 | 41791-0850 | 26-61-4030 | |
| 4 | 26-60-4040 | 41791-0834 | 41791-0851 | 26-61-4040 | |
| 5 | 26-60-4050 | 41791-0835 | 41791-0852 | 26-61-4050 | |
| 6 | 26-60-4060 | 41791-0836 | 41791-0853 | 26-61-4060 | |
| 7 | 26-60-4070 | 41791-0837 | 41791-0854 | 26-61-4070 | |
| 8 | 26-60-4080 | 41791-0838 | 41791-0855 | 26-61-4080 | |
| 9 | 26-60-4090 | 41791-0839 | 41791-0856 | 26-61-4090 | |
| 10 | 26-60-4100 | 41791-0840 | 41791-0857 | 26-61-4100 | |

| Circuits | Order No. | | | | Lead-free |
|----------|------------|------------------|------------------|--------------|-----------|
| | Tin | 15µ" Select Gold | 30µ" Select Gold | Overall Gold | |
| 11 | 26-60-4110 | 41791-0841 | 41791-0858 | 26-61-4110 | Yes |
| 12 | 26-60-4120 | 41791-0842 | 41791-0859 | 26-61-4120 | |
| 13 | 26-60-4130 | 41791-0843 | 41791-0860 | 26-61-4130 | |
| 14 | 26-60-4140 | 41791-0844 | 41791-0861 | 26-61-4140 | |
| 15 | 26-60-4150 | 41791-0845 | 41791-0862 | 26-61-4150 | |
| 16 | 26-60-4160 | 41791-0846 | 41791-0863 | 26-61-4160 | |
| 17 | 26-60-4170 | 41791-0847 | 41791-0864 | 26-61-4170 | |
| 18 | 26-60-4180 | 41791-0848 | 41791-0865 | 26-61-4180 | |

Circuit number designation is for ordering purposes only, check corresponding circuit designation on mating connector