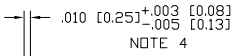
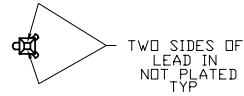
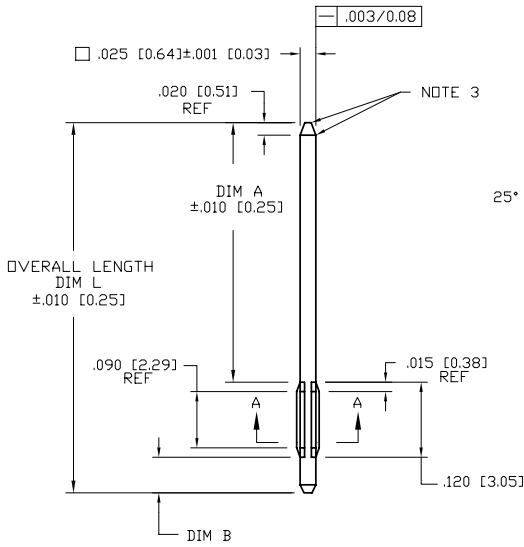
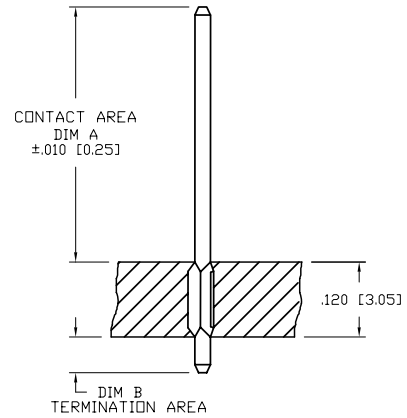


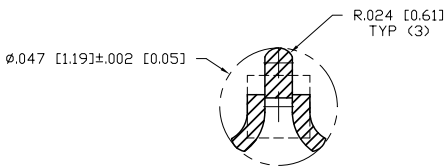
PRODUCT NUMBER  
SEE TABLE



25° ±5°



SECTION THRU P.C. BOARD



SECTION A-A  
SCALE 4:1  
WITHOUT FERRULE

| mat'l. code | surface      | tolerance  | projection | product family                        |
|-------------|--------------|------------|------------|---------------------------------------|
| SEE NOTE 1  | ASME Y14.5 ✓ | ASME Y14.5 |            | PIN PRODUCTS                          |
| l/r         | ec'n no      | dr         | date       | tolerances unless otherwise specified |
| E           | V60837       | EPK        | 1996-06-03 | angles                                |
| F           | V71498       | HTB        | 1997-10-28 | XXX+01/XX+3                           |
| G           | V01594       | JRW        | 2000-07-12 | XXX+005/XX+13                         |
| H           | V05-0400     | HTB        | 2005-04-29 | 0°±2'                                 |
| J           | V06-0684     | HTB        | 2006-07-24 | XXXX+0020/XXX+051                     |
| K           | V07-0009     | HTB        | 2007-01-05 | dr                                    |
| L           | V08-0376     | HTB        | 2008-08-27 | appd                                  |
| sheet       | revision     | L          | L          | L                                     |
| index       | sheet        | 1          | 2          | 3                                     |





|        |                         |       |        |
|--------|-------------------------|-------|--------|
| title  | TRI-PIN™<br>LOOSE PIECE |       |        |
| dwg no | 76191                   | sheet | 1 of 3 |
| type   | CUSTOMER Drawing        |       |        |
| size   | A4                      |       |        |

| PRODUCT NUMBER<br>NOTE 6 | PLATING                                | UNDERPLATING                   |
|--------------------------|--|--------------------------------|
| 76191-YYY                | 30μ" [0.76μ] MIN Au                    | 50μ" [1.27μ] MIN Ni            |
| 76191-YYLFF              |  |                                |
| 76193-YYY                | 50μ" [1.27μ] MIN Au                    | 50μ" [1.27μ] MIN Ni            |
| 76193-YYLFF              |  |                                |
| 76194-YYY                | <del>120μ" [3.05μ] MIN 93/7 SnPb</del> | <del>50μ" [1.27μ] MIN Ni</del> |
| 76194-YYLFF              | 100μ" [2.54μ] MIN Sn (NOTE 7)          | 50μ" [1.27μ] MIN Ni            |
| 76195-YYY                | 30μ" [0.76μ] MIN GXT™                  | 50μ" [1.27μ] MIN Ni            |
| 76195-YYLFF              |  |                                |
| 76196-YYY                | 15μ" [0.38μ] MIN GXT™                  | 50μ" [1.27μ] MIN Ni            |
| 76196-YYLFF              |  |                                |
| 76199-YYY                | 15μ" [0.38μ] MIN Au                    | 50μ" [1.27μ] MIN Ni            |
| 76199-YYLFF              |  |                                |

DISCONTINUED

NOTES :

- ① PIN MATERIAL : PHOS BRONZE 3/4 HARD  
ASTM B-159-66
2. .002 [0.05] MAX R. ON WIRE WRAP CORNERS OF PIN.
- ③ BURNISH MARKS PERMITTED.  
.003 [0.08] MAX  
BULGE .0005 [0.013] MAX TYP
- ④ .016 [0.41] MAX FOR OPPOSITE END IF "B" IS LESS  
THAN .230 [5.84].
5. SEE PRODUCT SPECIFICATION BUS-12-069 FOR P.C. BOARD  
HOLE DIAMETER AND P.C. BOARD PLATING INFORMATION.
- ⑥ ADD AN LF SUFFIX TO PART NUMBERS FOR PRODUCT  
THAT MEETS EUROPEAN UNION DIRECTIVES AND OTHER  
COUNTRY REGULATIONS AS DESCRIBED IN GS-22-008.
- ⑦ THIS PRODUCT HAS 100% TIN PLATING IN THE  
INTERFACE AND HAS NOT BEEN TESTED FOR WHISKER  
GROWTH IN ALL INTERCONNECT ENVIRONMENTS.

|             |                |                                       |                        |   |                         |
|-------------|----------------|---------------------------------------|------------------------|---|-------------------------|
| mat'l. code | SEE NOTE 1     | surface                               | tolerance              | projection  | product family          |
| lfr         | ecrn no        | ASME Y14.5 ✓                          | ASME Y14.5             |  | PIN PRODUCTS            |
| L           | dr             | tolerances unless otherwise specified | angles                 | INCH/MM   | title                   |
|             |                |                                       | 0°±2'                  | scale 1:1   | TRI-PIN™<br>LOOSE PIECE |
|             |                | dr E. KROPIEWICKI 1996-06-04          | engr L. FYE 1996-06-04 |  | dwg no                  |
|             |                | chr T. BREWBAKER 1996-06-04           | appd L. FYE 1996-06-04 |   | sheet 2 of 3            |
| sheet index | revision sheet |                                       |                        |   | 76191                   |
|             |                |                                       |                        |   | A4                      |
|             |                |                                       |                        |   | type CUSTOMER Drawing   |

Copyright FCJ



FCJconnect.com

1 | 2

3

4

| PRODUCT NUMBER | CONTACT AREA |        | TERM. AREA |        | OVERALL LENGTH |        |
|----------------|--------------|--------|------------|--------|----------------|--------|
|                | DIM A        | DIM A  | DIM B      | DIM B  | DIM L          | DIM L  |
| NOTE 6         | ENGLISH      | METRIC | ENGLISH    | METRIC | ENGLISH        | METRIC |
| 7619X-001      | 0.600        | 15.24  | 0.050      | 1.27   | 0.770          | 19.56  |
| 7619X-002      | 0.490        | 12.45  | 0.050      | 1.27   | 0.660          | 16.76  |
| 7619X-003      | 0.600        | 15.24  | 0.330      | 8.38   | 1.050          | 26.67  |
| 7619X-004      | 0.260        | 6.60   | 0.050      | 1.27   | 0.430          | 10.92  |
| 7619X-005      | 0.280        | 7.11   | 0.330      | 8.38   | 0.730          | 18.54  |
| 7619X-006      | 0.730        | 18.54  | 0.050      | 1.27   | 0.900          | 22.86  |
| 7619X-007      | 0.370        | 9.40   | 0.050      | 1.27   | 0.540          | 13.72  |
| 7619X-008      | 0.690        | 17.53  | 0.040      | 1.02   | 0.850          | 21.59  |
| 7619X-009      | 0.205        | 5.21   | 0.050      | 1.27   | 0.375          | 9.53   |
| 7619X-010      | 0.390        | 9.91   | 0.050      | 1.27   | 0.560          | 14.22  |
| 7619X-011      | 0.545        | 13.84  | 0.050      | 1.27   | 0.715          | 18.16  |
| 7619X-012      | 0.610        | 15.49  | 0.050      | 1.27   | 0.780          | 19.81  |
| 7619X-013      | 0.320        | 8.13   | 0.215      | 5.46   | 0.660          | 16.76  |
| 7619X-014      | 0.315        | 8.00   | 0.050      | 1.27   | 0.485          | 12.32  |
| 7619X-015      | 0.345        | 8.76   | 0.310      | 7.87   | 0.775          | 19.69  |
| 7619X-016      | 0.425        | 10.80  | 0.310      | 7.87   | 0.855          | 21.72  |
| 7619X-017      | 0.220        | 5.59   | 0.080      | 2.03   | 0.420          | 10.67  |
| 7619X-018      | 0.425        | 10.80  | 0.080      | 2.03   | 0.625          | 15.88  |
| 7619X-019      | 0.415        | 10.54  | 0.040      | 1.02   | 0.575          | 14.61  |
| 7619X-020      | 0.220        | 5.59   | 0.055      | 1.40   | 0.395          | 10.03  |
| 7619X-021      | 0.425        | 10.80  | 0.055      | 1.40   | 0.600          | 15.24  |
| 7619X-022      | 0.360        | 9.14   | 0.425      | 10.80  | 0.905          | 22.99  |

|             |                |                                       |                           |            |                         |
|-------------|----------------|---------------------------------------|---------------------------|------------|-------------------------|
| mat'l. code | SEE NOTE 1     | surface                               | tolerance                 | projection | product family          |
| lfr         | ecrn no        | ASME Y14.5 ✓                          | ASME Y14.5                |            | PIN PRODUCTS            |
| L           | dr             | tolerances unless otherwise specified | XX+01/XX-3                | INCH/MM    | title                   |
|             |                | angles                                | XXX+005/XXX-13            | scale 1:1  | TRI-PIN™<br>LOOSE PIECE |
|             |                | 0°±2'                                 | XXXX+0020/XXX+051         |            | dwg no                  |
|             |                | dr                                    | E. KROPIEWNICI 1996-06-04 |            | sheet 3 of 3            |
|             |                | engr                                  | L. FYE 1996-06-04         |            | size                    |
|             |                | chr                                   | T. BREWBAKER 1996-06-04   |            | 76191 A4                |
|             |                | appd                                  | L. FYE 1996-06-04         |            | type                    |
| sheet index | revision sheet |                                       |                           |            | CUSTOMER Drawing        |

form A4mmXLC

1

2

3

4

PDM: Rev:L STATUS:Released Printed: Aug 29, 2008