

Series image - Reference only

EU RoHS

**RoHS Compliant by Exemption**

China RoHS



**Search Parts in this Series**

88759 Series

**Part Number:** **0887685500**

**Status:** **Active** **Overview:** **DMS-59®**

**Description:** 1.27mm (.050") Pitch DMS-59® (M) to Two DVI-D(M) Adapters Cable Assembly, 2.0m (6.56' ) Length

## General

Product Family	Cable Assemblies
Series	<u>88759</u>
Connector to Connector	DMS-59™ to DVI-D
Overview	<u>DMS-59®</u>
Product Name	DMS59®

## Physical

Cable Length	2.0m (6.56' )
Circuits (Loaded)	59
Color - Resin	Black
Color - Resin	Black (D2)
Gender	Male-Male
Lock to Mating Part	Yes
Material - Metal	Aluminum
Material - Metal	Phosphor Bronze
Material - Plating Mating	Gold
Material - Plating Mating	n/a
Material - Plating Termination	Tin
Material - Resin	High Temperature Thermoplastic
Material - Resin	Polyester
Packaging Type	Bag
Pitch - Mating Interface (in)	0.050 In
Pitch - Mating Interface (mm)	1.27 mm
Plating min: Mating (uin)	10
Plating min: Mating (uin)	75
Plating min: Mating (um)	0.25
Plating min: Mating (um)	1.875
Plating min: Termination (uin)	100
Plating min: Termination (uin)	150
Plating min: Termination (um)	2.5
Plating min: Termination (um)	3.75
Single Ended	No
Termination Interface: Style	N/A
Termination Interface: Style	Solder or Weld
Termination Interface: Style	Through Hole
Wire Insulation Diameter	N/A
Wire Size AWG	30
Wire/Cable Type	Round

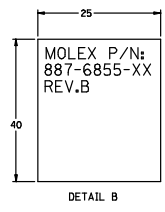
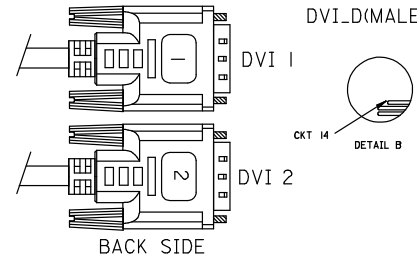
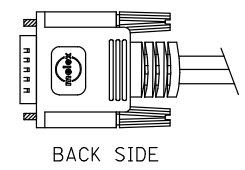
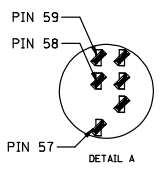
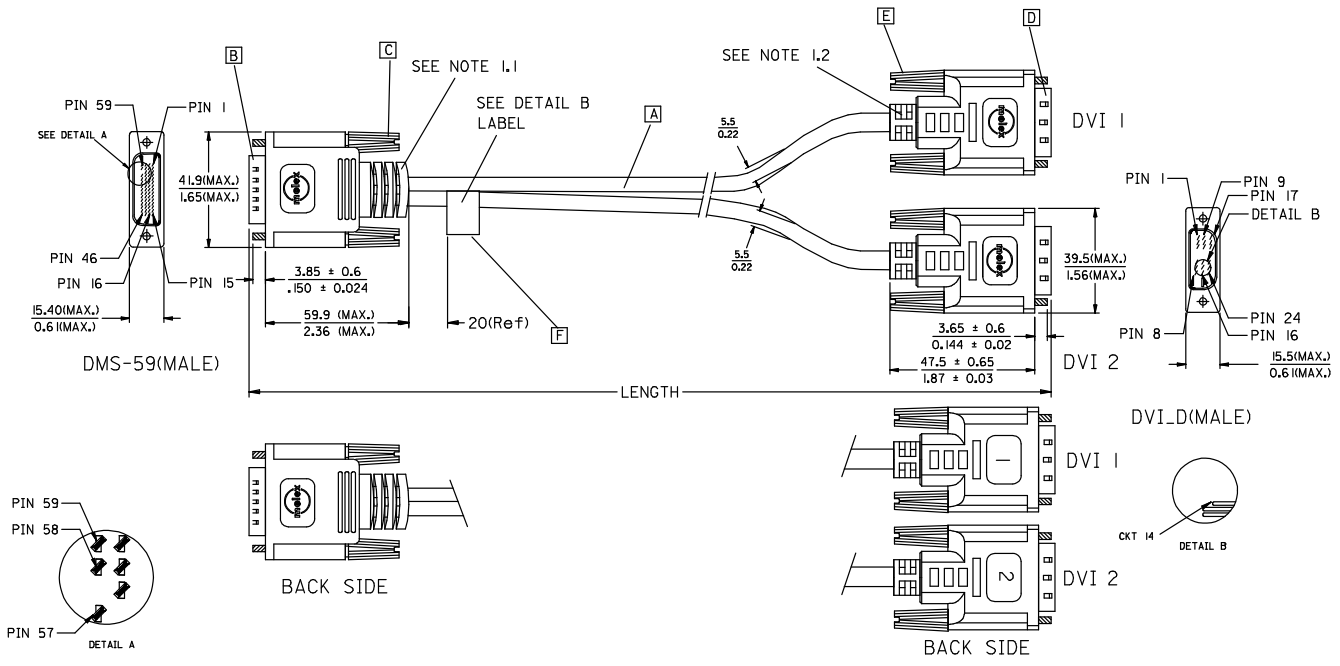
**Electrical**

Current - Maximum	1.000 Amp
Impedance	100 ohms
Shielded	Yes
Voltage - Maximum	30VAC

**Material Info****Reference - Drawing Numbers**

Product Specification	PS-88768-55XX
Sales Drawing	SD-88744-099
Sales Drawing	SD-88768-099

7 6 5 4 3 2 1



ENTER DESCRIPTION EC NO: DG2009-0015 DRWN: XLI LANG 2008/07/23 CHKD: 2008/07/23 APPR: BLAU 2008/07/24	QUALITY SYMBOLS ▽=0 ▽=0	GENERAL TOLERANCES (UNLESS SPECIFIED)		DIMENSION STYLE MM/IN		SCALE ---	DESIGN UNITS METRIC	THIRD ANGLE PROJECTION	
		4 PLACES ± --- ± ---	3 PLACES ± --- ± ---	DRAWN BY JLIU13	DATE 2007/11/07	TITLE DMS59(M) TO TWO DVI-D(M) CABLE ASS'Y			
		2 PLACES ± --- ± ---	1 PLACE ± --- ± ---	CHECKED BY BLAU	DATE 2007/11/07	MOLEX MOLEX INCORPORATED			
		ANGULAR ± --- °	DRAFT WHERE APPLICABLE MUST REMAIN WITHIN DIMENSIONS		APPROVED BY BLAU	DATE 2007/11/07	MATERIAL NO. SEE TABLE A	DOCUMENT NO. SD-88744-099	SHEET NO. 1 OF 3

tb\_frame\_A4\_P\_ME\_T  
Rev. D 2004/04/02

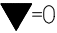
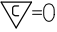
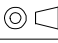

6 5 4 3 2 1

7                      6                      5                      4                      3                      2                      1

WIRING DIAGRAM:

SHIELD	SHIELD	GROUND
PIN 24	PIN 32	DVI1_TXC-
PIN 23	PIN 31	DVI1_TXC+
PIN 22	PIN 57	DVI1_TXC RTN
PIN 19	PIN 33	DVI1_TX0 RTN
PIN 18	PIN 29	DVI1_TX0+
PIN 17	PIN 30	DVI1_TX0-
PIN 16	PIN 36	DVI1_HPD
PIN 15	PIN 54	Ground
PIN 14	PIN 5	+5V
PIN 11	PIN 34	DVI1_TX1 RTN
PIN 10	PIN 27	DVI1_TX1+
PIN 9	PIN 28	DVI1_TX1-
PIN 7	PIN 7	DVI1_SDA
PIN 6	PIN 6	DVI1_SCL
PIN 3	PIN 35	DVI1_TX2 RTN
PIN 2	PIN 25	DVI1_TX2+
PIN 1	PIN 26	DVI1_TX2-
DVI 1	DMS59	CABLE FUNCTION

SHIELD	SHIELD	GROUND
PIN 24	PIN 44	DVI2_TXC-
PIN 23	PIN 45	DVI2_TXC+
PIN 22	PIN 49	DVI2_TXC RTN
PIN 19	PIN 43	DVI2_TX0 RTN
PIN 18	PIN 16	DVI2_TX0+
PIN 17	PIN 17	DVI2_TX0-
PIN 16	PIN 40	DVI2_HPD
PIN 15	PIN 52	Ground
PIN 14	PIN 11	+5V
PIN 11	PIN 42	DVI2_TX1 RTN
PIN 10	PIN 18	DVI2_TX1+
PIN 9	PIN 19	DVI2_TX1-
PIN 7	PIN 9	DVI2_SDA
PIN 6	PIN 10	DVI2_SCL
PIN 3	PIN 41	DVI2_TX2 RTN
PIN 2	PIN 20	DVI2_TX2+
PIN 1	PIN 21	DVI2_TX2-
DVI 2	DMS59	CABLE FUNCTION

ENTER DESCRIPTION EC NO: DG2009-0015 DRWN: XLI LANG 2008/07/23 CHKD: 2008/07/23 APPR: BLAU 2008/07/24 D REV	QUALITY SYMBOLS  = 0  = 0.1	GENERAL TOLERANCES (UNLESS SPECIFIED)		DIMENSION STYLE MM/IN		SCALE ---	DESIGN UNITS METRIC	 THIRD ANGLE PROJECTION	
		4 PLACES ± --- ± ---	3 PLACES ± --- ± ---	DRAWN BY JLIU13	DATE 2007/11/07	TITLE DMS59(M) TO TWO DVI-D(M) CABLE ASS'Y			
		2 PLACES ± --- ± ---	1 PLACE ± --- ± ---	CHECKED BY BLAU	DATE 2007/11/07				
		ANGULAR ± --- °		APPROVED BY BLAU		DATE 2007/11/07	 MOLEX INCORPORATED		
DRAFT WHERE APPLICABLE MUST REMAIN WITHIN DIMENSIONS		MATERIAL NO. SEE TABLE A		DOCUMENT NO. SD-88744-099	SHEET NO. 2 OF 3				

tb\_frame\_A4\_P\_ME\_T  
Rev. D 2004/04/02

6                      5                      4                      3                      2                      1

7 6 5 4 3 2 1

NOTE:1. OVERMOLD SPECIFICATION

- 1.1 DMS59 BOOT MOLDED WITH SNOW WHITE PVC RESIN,UL 94V-0.
- 1.2 DVI BOOT MOLDED WITH SNOW WHITE PVC RESIN,UL 94V-0.

2. MECHANICAL SPECIFICATION

- ▽2.1 CABLE SHOULD STAND THE PULL FORCE 89-11IN FOR 30 SECONDS WITH NO VISIBLE TERMINATION DAMAGE.
- 2.2 CABLE SHOULD PASS THE FLEX TEST IN 100 CYCLES AT EACH OF PLANES, PER EIA 364-41, CONDITION I.

3. PRODUCT ELECTRICAL SPECIFICATION


- ▽3.1 DIELECTRIC STRENGTH: 300V DC FOR 10mS.
- ▽3.2 INSULATION RESISTANCE: 20 MEGA Ohms(MIN.).
- ▽3.3 CONTACT RESISTANCE: 2 Ohms(MAX.).
- ▽3.4 DIFFERENTIAL LINES CHARACTERISTIC IMPEDANCE: 100±7 Ohms @TDR.
- 3.5 SIGNALS CROSSTALK(FEXT) : 5% (MAX.) PER ANSI/EIA-364-90.
- 3.6 SIGNALS INTRA-PAIR SKEW (PER CABLE): <150 ps.
- 4.CONNECTOR PLATING: AU FLASH PLATING.
- 5.SHORTCIRCUIT AMONG DRAIN WIRES IS ACCEPTABLE.
- 6.SCREW SPEC.:4-40 UNC.

MATERIAL LIST:

ITEM	DESCRIPTION	QTY.
F	LABEL	1
E	DVI THUMB SCREW (4-40UNC)	4
D	DVI_D SINGLE CHANNEL G/F CONNECTOR	2
C	LFH SCREW (4-40UNC)	2
B	DMS-59 PLUG ASSY(NATURE)	1
A	DVI-D SINGLE LINK CABLE	2

TABLE A

MX-P/N	DESCRIPTION	LENGTH
88768-5510	DMS59(M) TO TWO DVI-D(M) S/L CABLE 3M	3000±60
88768-5500	DMS59(M) TO TWO DVI-D(M) S/L CABLE 2M	2000±50

ENTER DESCRIPTION EC NO.: DG2008-0035 DRWN: JLIU13 CHKD: BLAU APPR: BLAU 2007/11/07 2007/11/16 2007/12/07	QUALITY SYMBOLS ▽=0 ▽=0	GENERAL TOLERANCES (UNLESS SPECIFIED)		DIMENSION STYLE MM/IN		SCALE ---	DESIGN UNITS METRIC	THIRD ANGLE PROJECTION	
			mm	INCH	DRAWN BY JLIU13	DATE 2007/11/07	TITLE DMS59(M) TO TWO DVI-D(M) CABLE ASS'Y		
		4 PLACES	± ---	± ---	CHECKED BY BLAU	DATE 2007/11/07	 MOLEX INCORPORATED		
		3 PLACES	± ---	± ---	APPROVED BY BLAU	DATE 2007/11/07			
2 PLACES	± ---	± ---	MATERIAL NO. SEE TABLE A		DOCUMENT NO. SD-88744-099	SHEET NO. 3 OF 3			
1 PLACE	± ---	± ---	DRAFT WHERE APPLICABLE MUST REMAIN WITHIN DIMENSIONS						
		ANGULAR ± ---°		THIS DRAWING CONTAINS INFORMATION THAT IS PROPRIETARY TO MOLEX INCORPORATED AND SHOULD NOT BE USED WITHOUT WRITTEN PERMISSION					

tb\_frame\_A4\_P\_ME\_T  
Rev. D 2004/04/02

6 5 4 3 2 1

7                      6                      5                      4                      3                      2                      1

**NOTE:1. OVERMOLD SPECIFICATION**

- 1.1 DMS59 BOOT MOLDED WITH SNOW WHITE PVC RESIN,UL 94V-0.
- 1.2 DVI BOOT MOLDED WITH SNOW WHITE PVC RESIN,UL 94V-0.

**2. MECHANICAL SPECIFICATION**

▽2.1 CABLE SHOULD STAND THE PULL FORCE 89-111N FOR 30 SECONDS WITH NO VISIBLE TERMINATION DAMAGE.

2.2 CABLE SHOULD PASS THE FLEX TEST IN 100 CYCLES AT EACH OF PLANES, PER EIA 364-41, CONDITION I.

**3. PRODUCT ELECTRICAL SPECIFICATION**

▽3.1 DIELECTRIC STRENGTH: 300V DC FOR 10mS.

▽3.2 INSULATION RESISTANCE: 20 MEGA Ohms(MIN.).

▽3.3 CONTACT RESISTANCE: 2 Ohms(MAX.).

▽3.4 DIFFERENTIAL LINES CHARACTERISTIC IMPEDANCE: 100±7 Ohms @TDR.

3.5 SIGNALS CROSSTALK(FEXT) : 5% (MAX.) PER ANSI/EIA-364-90.

3.6 SIGNALS INTRA-PAIR SKEW (PER CABLE): <150 ps.

4.CONNECTOR PLATING: AU FLASH PLATING.

5.SHORTCIRCUIT AMONG DRAIN WIRES IS ACCEPTABLE.

6.SCREW SPEC.:4-40 UNC.

**MATERIAL LIST:**

F	LABEL	1
E	DVI THUMB SCREW (4-40UNC)	4
D	DVI_D SINGLE CHANNEL G/F CONNECTOR	2
C	LFH SCREW (4-40UNC)	2
B	DMS-59 PLUG ASSY(NATURE)	1
A	DVI-D SINGLE LINK CABLE	2
ITEM	DESCRIPTION	QTY.

TABLE A

88768-5510	DMS59(M) TO TWO DVI-D(M) S/L CABLE 3M	3000±60
88768-5500	DMS59(M) TO TWO DVI-D(M) S/L CABLE 2M	2000±50
MX-P/N	DESCRIPTION	LENGTH

ENTER DESCRIPTION EC NO: DG2009-0015 DRWN: XLI LANG 2008/07/23 CHKD: 2008/07/23 APPR: BLAU 2008/07/24	QUALITY SYMBOLS ▽=0 ▽=0	GENERAL TOLERANCES (UNLESS SPECIFIED)		DIMENSION STYLE MM/IN		SCALE ---	DESIGN UNITS METRIC	THIRD ANGLE PROJECTION	
			mm	INCH	DRAWN BY JL IU13	DATE 2007/11/07	TITLE DMS59(M) TO TWO DVI-D(M) CABLE ASS'Y		
		4 PLACES	± ---	± ---	CHECKED BY BLAU	DATE 2007/11/07	MOLEX INCORPORATED MATERIAL NO.      DOCUMENT NO.      SHEET NO. SEE TABLE A      SD-88768-099      3 OF 3		
		3 PLACES	± ---	± ---	APPROVED BY BLAU	DATE 2007/11/07			
2 PLACES	± ---	± ---	DRAFT WHERE APPLICABLE MUST REMAIN WITHIN DIMENSIONS		SIZE A4 THIS DRAWING CONTAINS INFORMATION THAT IS PROPRIETARY TO MOLEX INCORPORATED AND SHOULD NOT BE USED WITHOUT WRITTEN PERMISSION				
1 PLACE	± ---	± ---							
		ANGULAR ± ---°							

tb\_frame\_A4\_P\_ME\_T  
Rev. D 2004/04/02

6                      5                      4                      3                      2                      1

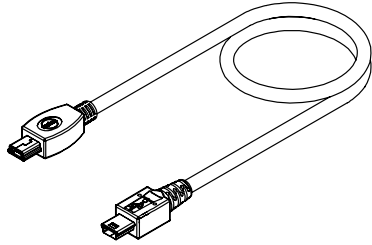
# Universal Serial Bus (USB) On-The-Go (OTG) Shielded I/O Cable Assembly

**88732**

**Standard USB A to Mini B**

**88753**

**Mini A to Mini B**



### Features and Benefits

- Approximately 1/8 the size of standard USB-B connectors
- Connector-to-connector polarization ensures proper mating
- Full shield provides EMI/RFI protection
- Meets USB 2.0 specifications
- Compact and lightweight design meets various portable and mobile equipment needs
- Rugged durability up to 5,000 cycles
- Other cable lengths and custom designs available

### Reference Information

Product Specification: PS-87525  
Packaging: Bag or custom-specified  
Mates With: USB A, Mini AB and Mini B receptacle  
Designed In: Millimeters

### Electrical

Voltage: 30V  
Current: 1.0A  
Contact Resistance: 50 milliohms max.  
Dielectric Withstanding Voltage: 100V AC/min.  
Insulation Resistance: 100 Megohms min.

### Mechanical

Mating Force: 35N max.  
Unmating Force: 10N min.  
Durability: USB A—1500 cycles  
Mini A and Mini B—5000 cycles

### Physical

Contact: Copper Alloy  
Plating: Contact Area—0.75µm (30µ") min. Gold  
Underplating: Nickel  
Wire Gauge: 28 AWG  
Operating Temperature: 0 to +50°C

Cable Assembly Lengths (mm)	Order No.	Description	Lead-free
800 White	<a href="#">88732-8510</a>	USB A to Mini B, USB 1.1	Yes
800 Black	<a href="#">88732-8512</a>		
1000 White	<a href="#">88732-8610</a>		
1000 Black	<a href="#">88732-8612</a>		
1500 White	<a href="#">88732-8710</a>		
1500 Black	<a href="#">88732-8712</a>		
1800 White	<a href="#">88732-8810</a>		
1800 Black	<a href="#">88732-8812</a>		
2000 White	<a href="#">88732-8910</a>		
2000 Black	<a href="#">88732-8912</a>		
800 White	<a href="#">88732-8500</a>	USB A to Mini B, USB 2.0	Yes
800 Black	<a href="#">88732-8502</a>		
1000 White	<a href="#">88732-8600</a>		
1000 Black	<a href="#">88732-8602</a>		
1500 White	<a href="#">88732-8700</a>		
1500 Black	<a href="#">88732-8702</a>		
1800 White	<a href="#">88732-8800</a>		
1800 Black	<a href="#">88732-8802</a>		
2000 White	<a href="#">88732-8900</a>		
2000 Black	<a href="#">88732-8902</a>		

Cable Assembly Lengths (mm)	Order No.	Description	Lead-free
800 White	<a href="#">88753-8110</a>	USB Mini A to Mini B, USB 1.1	Yes
1000 White	<a href="#">88753-8210</a>		
1200 White	<a href="#">88753-8310</a>		
1500 White	<a href="#">88753-8410</a>		
1800 White	<a href="#">88753-8510</a>		
2000 White	<a href="#">88753-8610</a>		
800 White	<a href="#">88753-8100</a>	USB Mini A to Mini B, USB 2.0	Yes
800 Black	<a href="#">88753-8102</a>		
1000 White	<a href="#">88753-8200</a>		
1000 Black	<a href="#">88753-8202</a>		
1200 White	<a href="#">88753-8300</a>		
1200 Black	<a href="#">88753-8302</a>		
1500 White	<a href="#">88753-8400</a>		
1500 Black	<a href="#">88753-8402</a>		
1800 White	<a href="#">88753-8500</a>		
1800 Black	<a href="#">88753-8502</a>		
2000 White	<a href="#">88753-8600</a>		
2000 Black	<a href="#">88753-8602</a>		

I/O Products

N

# DMS-59™ Shielded I/O Cable Assembly

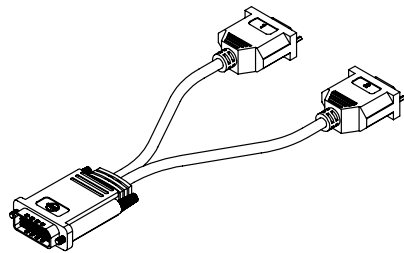
**88759**

**DMS-59 To Dual VGA**

**DMS-59 To VGA/DVI Analog**

**DMS-59 To Dual DVI Analog**

**DMS-59 To Dual DVI Digital**



### Features and Benefits

- Keyed (void pin number 58) to ensure exclusive mating of receptacle with DMS-59 cable assemblies
- Proven LFH™ (Low Force Helix) high-cycle contact interface system for reliable system life
- Cable assemblies are available in a variety of lengths and configurations

### Reference Information

Product Specification: PS-88768-5300  
Packaging: Bag  
Mates With: DMS-59 receptacle  
Designed In: Millimeters

### Electrical

Voltage: 30V  
Current: 1.0A  
Contact Resistance: 50 milliohms max.  
Dielectric Withstanding Voltage: 500V DC  
Insulation Resistance: 100 Megohms min.

### Mechanical

Insertion Force: 53N max.  
Withdraw Force: 22N min.  
Durability: 5000 cycles

### Physical

Housing: White glass-filled LCP, UL 94V-0  
Contact: Copper Alloy  
Plating: Contact Area—0.75µm (30µ") min. Gold  
Underplating: Nickel  
Wire Gauge: 30 AWG  
Operating Temperature: 0 to +80°C

Cable Length (mm)	Order No.	Cable Assembly Description	Lead-free
200	<a href="#">88768-5200</a>	DMS-59-Male to Two VGA-Female Cable Assembly	Yes
	<a href="#">88768-5300</a>	DMS-59-Male to Two DVI-I-Female Cable Assembly	
	<a href="#">88768-5400</a>	DMS-59-Male to VGA-Female + DVI-I-Female Cable Assembly	
2000	<a href="#">88768-5500</a>	DMS-59-Male to Two DVI-D-Male Single Link Cable Assembly	
3000	<a href="#">88768-5510</a>		



MX07 N-49