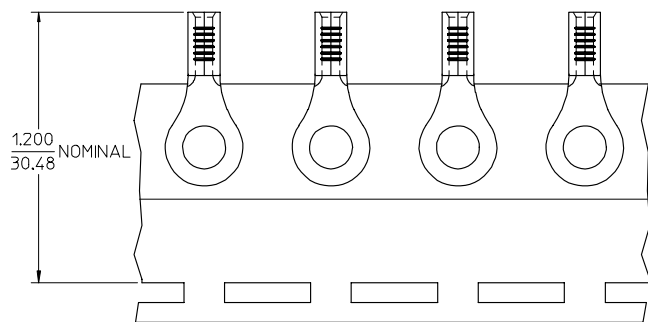
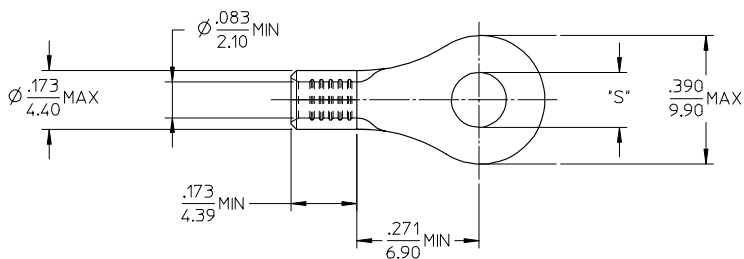
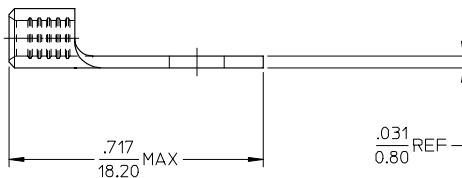


MATERIAL NO.	ENG. NO.	STUD SIZE	"S" MAX	DESCRIPTION
192030470	B-S-137-08	8	.185/4.70	LOOSE
192030050	B-S-137-08T	8	.185/4.70	TAPE



PARTS ON TAPE



NOTE(S):

1. MATERIAL: STEEL
2. FINISH: NICKEL PLATED
3. WIRE SIZE: 16-14 AWG (1.5-2.5 MM²)
4. PART IS ROHS COMPLIANT.
5. AMBIENT OPERATING TEMPERATURE UP TO 900 °F (483 °C).

REV	DESCRIPTION	QUALITY SYMBOLS	GENERAL TOLERANCES (UNLESS SPECIFIED)		DIMENSION STYLE		SCALE	DESIGN UNITS	THIRD ANGLE PROJECTION
			mm	INCH	IN/MM	IN/MM			
ADDED OPERATING TEMP	EC NO: EITC2007-0297	▽=0	4 PLACES	± --- ± ---	DRAWN BY	DATE	4:1	INCH	RING TONGUE TERMINAL, 16-14 AWG, KRIMPTITE, 900 DEG F (483 DEG C)
DRW:HEHILLE 2007/03/13	CHKD:MACNEIL 2007/03/13	▽=0	3 PLACES	± --- ± .005	DMYRICK	2005/04/05			
CHKD:MACNEIL 2007/03/13	APPR:MACNEIL 2007/03/14		2 PLACES	± 0.13 ± .01	CHECKED BY	DATE	SD-19203-023	SHEET NO. 1 OF 1	
			1 PLACE	± 0.25 ± ---	RDEROSS	2005/04/05			
			ANGULAR ±1/2°		APPROVED BY	DATE			
			DRAFT WHERE APPLICABLE MUST REMAIN WITHIN DIMENSIONS		RDEROSS	2005/04/05			
					MATERIAL NO.	DOCUMENT NO.			
					SEE CHART				
					SIZE B	THIS DRAWING CONTAINS INFORMATION THAT IS PROPRIETARY TO MOLEX INCORPORATED AND SHOULD NOT BE USED WITHOUT WRITTEN PERMISSION			