

**Switch Language**

English

**Need Assistance?**

- [Contact Us](#)
- [Find a Distributor](#)
- [Order Samples](#)
- [Tech Library](#)

[Printer-friendly page](#)

[Email this page](#)

[Home](#)   [Quick Disconnects](#)   [Datasheet](#)

**Part Number:** 0190020021

**Status:** Active

**Description:** Avikrimp™ Fully Insulated Quick Disconnect, Female, for 18-22 AWG Wire, Box

**Documents:**

*Note - Please disable browser pop-up blockers for documents on www.molex.com*

[Drawing \(PDF\)](#)

[Related Catalog Page \(PDF\)](#)

**Order Products:**

[Check Distributor Inventory](#)

[Add to My Parts](#)

[Request Samples](#)

**Part Detail:** ([show all](#))

[General](#)   [Physical](#)   [Electrical](#)   [Material Info](#)

**General**

|                |                   |
|----------------|-------------------|
| Product Family | Quick Disconnects |
| Series         | <u>19002</u>      |
| Product Name   | Avikrimp™         |
| Type           | Quick Disconnect  |

**Physical**

|                               |                     |
|-------------------------------|---------------------|
| Barrel Type                   | Closed              |
| Flammability                  | 94V-2               |
| Gender                        | Female              |
| Insulation                    | Nylon (PA)          |
| Lock to Mating Part           | None                |
| Material - Metal              | Brass               |
| Orientation                   | Straight            |
| Packaging Type                | Bag                 |
| Polarized to Mating Part      | No                  |
| Tab Thickness                 | 0.81mm (.032")      |
| Tab Width                     | 5.21mm (.205")      |
| Temperature Range - Operating | -65°C to +105°C     |
| Wire Insulation Diameter      | 3.17mm (.125") max. |
| Wire Size AWG                 | 18                  |
| Wire Size AWG                 | 20                  |
| Wire Size AWG                 | 22                  |
| Wire Size mm²                 | 0.35 - 0.80         |

**Electrical**

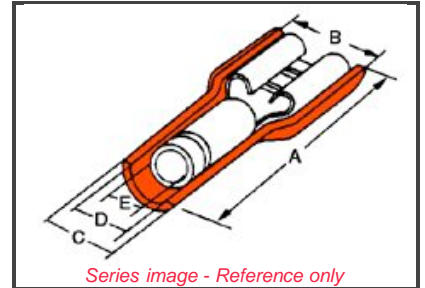
|                   |         |
|-------------------|---------|
| CSA               | LR18689 |
| UL                | E79133  |
| Voltage - Maximum | 300V    |

**Material Info**

|                 |         |
|-----------------|---------|
| Old Part Number | AA-5285 |
|-----------------|---------|

**Reference - Drawing Numbers**

|               |              |
|---------------|--------------|
| Sales Drawing | SD-19002-003 |
|---------------|--------------|



**EU RoHS**

**ELV and RoHS Compliant**

**China RoHS**



**Need more information on product compliance?**

Email [productcompliance@molex.com](mailto:productcompliance@molex.com)

Please visit the [Contact Us](#) section for any non-product compliance questions.

**Search Parts in this Series**

19002 Series

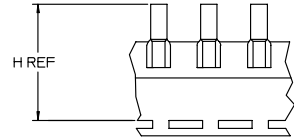
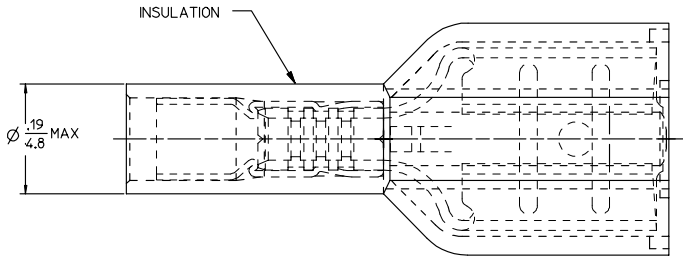
**Application Tooling**

*Tooling specifications and manuals are found by selecting the products below. Crimp Height Specifications are then contained in the Application Tooling Specification document.*

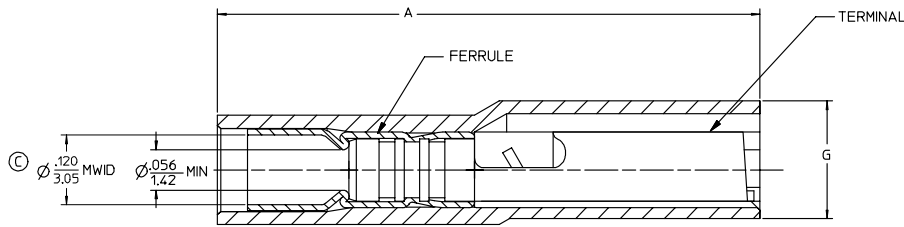
**Global**

| Description                                    | Product #         |
|--|-------------------|
| Hand Crimp Tool                                | <u>0640010800</u> |
| Crimp Head for the AT-200™ Pneumatic Hand Tool | <u>0640050800</u> |

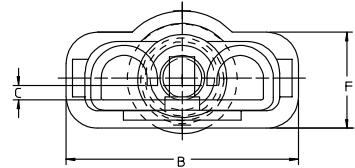
| MATERIAL NUMBER LOOSE PCS | ENGINEERING NUMBER LOOSE PCS | MATERIAL NUMBER ON STRIP | ENGINEERING NUMBER ON STRIP | MATERIAL NUMBER ON TAPE | ENGINEERING NUMBER ON TAPE | MATERIAL NUMBER REV WOUND ON TAPE | ENGINEERING NUMBER REV WOUND ON TAPE | MATERIAL NUMBER ON TAPE BIG REEL | ENGINEERING NUMBER ON TAPE BIG REEL | CURL HEIGHT "C" REF | ACCEPTS TAB SIZE | STOCK THK | "A" MAX  | "B" MAX | "F" REF | "G" MAX | "H" REF     |
|---------------------------|------------------------------|--------------------------|-----------------------------|-------------------------|----------------------------|-----------------------------------|--------------------------------------|----------------------------------|-------------------------------------|---------------------|------------------|-----------|----------|---------|---------|---------|-------------|
| 190020001                 | AA-5261                      | 190020004                | AA-5261Z                    | 190020002               | AA-5261T                   | 190020003                         | AA-5261TR                            | 190020047                        | AA-5261BT                           | .028/0.71           | .250 X .032      | .016/0.41 | .89/22.6 | .38/9.7 | .16/4.1 | .20/5.1 | 1.425/36.20 |
| 190020019                 | AA-5283                      | 190020059                | AA-5283Z                    | 190020020               | AA-5283T                   | 190020058                         | AA-5283TR                            |                                  |                                     | .017/0.43           | .205 X .020      | .016/0.41 | .80/20.3 | .32/8.1 | .16/4.1 | .22/5.6 | 1.395/35.43 |
| 190020021                 | AA-5285                      | 190020023                | AA-5285Z                    | 190020022               | AA-5285T                   | 190020060                         | AA-5285TR                            |                                  |                                     | .028/0.71           | .205 X .032      | .016/0.41 | .80/20.3 | .32/8.1 | .16/4.1 | .22/5.6 | 1.395/35.43 |
| 190020005                 | AA-5267                      | 190020008                | AA-5267Z                    | 190020007               | AA-5267T                   |                                   |                                      | 190020006                        | AA-5267BT                           | .017/0.43           | .187 X .020      | .016/0.41 | .80/20.3 | .32/8.1 | .16/4.1 | .22/5.6 | 1.380/35.10 |
| 190020009                 | AA-5271                      | 190020012                | AA-5271Z                    | 190020010               | AA-5271T                   | 190020011                         | AA-5271TR                            |                                  |                                     | .028/0.71           | .187 X .032      | .016/0.41 | .80/20.3 | .32/8.1 | .16/4.1 | .22/5.6 | 1.380/35.10 |
| 190020013                 | AA-5275                      | 190020015                | AA-5275Z                    | 190020014               | AA-5275T                   |                                   |                                      |                                  |                                     | .016/0.41           | .110 X .020      | .012/0.31 | .80/20.3 | .23/5.8 | .13/3.3 | .20/5.1 | 1.380/35.05 |
| 190020016                 | AA-5279                      | 190020018                | AA-5279Z                    | 190020017               | AA-5279T                   | 190020065                         | AA-5279TR                            |                                  |                                     | .028/0.71           | .110 X .032      | .012/0.31 | .80/20.3 | .23/5.8 | .13/3.3 | .20/5.1 | 1.380/35.05 |



PARTS ON TAPE



TERMINAL IS NOT SECTIONED FOR CLARITY



SALES DRAWING

NOTES:

- MATERIAL: TERMINAL BRASS  
TERMINAL PLATING: ELECTRO TIN  
FERRULE: BRASS  
FERRULE PLATING: ELECTRO TIN  
INSULATION: NYLON 94V2 COLOR RED.
- MWID = MAXIMUM WIRE INSULATION DIAMETER

|   |                 |                                       |                       |   |                                      |                        |
|---|-----------------|---------------------------------------|-----------------------|---|--------------------------------------|------------------------|
| WASFEMAK/CD<br>EC NO: ETC2005-0172<br>DRAWN/BENDERLE 2005/04/28<br>CHKD/DEROSS 2005/04/28<br>APPR/DEROSS 2005/04/28 | QUALITY SYMBOLS | GENERAL TOLERANCES (UNLESS SPECIFIED) | DIMENSION STYLE IN/MM | SCALE 4:1   | DESIGN UNITS INCH                    | THIRD ANGLE PROJECTION |
|   | ▽=0             | 4 PLACES ± --- ± ---                  | DRAWN BY BENDERLE     | DATE 2005/03/28   | TITLE AVIKRIMP FEMALE FIQD 22-18 AWG |                        |
|   | ▽=0             | 3 PLACES ± --- ± .005                 | CHECKED BY            | DATE 2005/03/28   | MOLEX INCORPORATED                   |                        |
|   | ▽=0             | 2 PLACES ± 0.13 ± .01                 | APPROVED BY R DEROSS  | DATE 2005/03/28   | MATERIAL NO. SD-19002-003            |                        |
|   |                 | 1 PLACE ± 0.25 ± ---                  | ANGULAR ±1/2°         | DOCUMENT NO. SD-19002-003   |                                      |                        |
|   |                 |                                       |                       | SHEET NO. 1 OF 1  |                                      |                        |
|   |                 |                                       |                       | DRAFT WHERE APPLICABLE SEE CHART  |                                      |                        |
|   |                 |                                       |                       | THIS DRAWING CONTAINS INFORMATION THAT IS PROPRIETARY TO MOLEX INCORPORATED AND SHOULD NOT BE USED WITHOUT WRITTEN PERMISSION |                                      |                        |