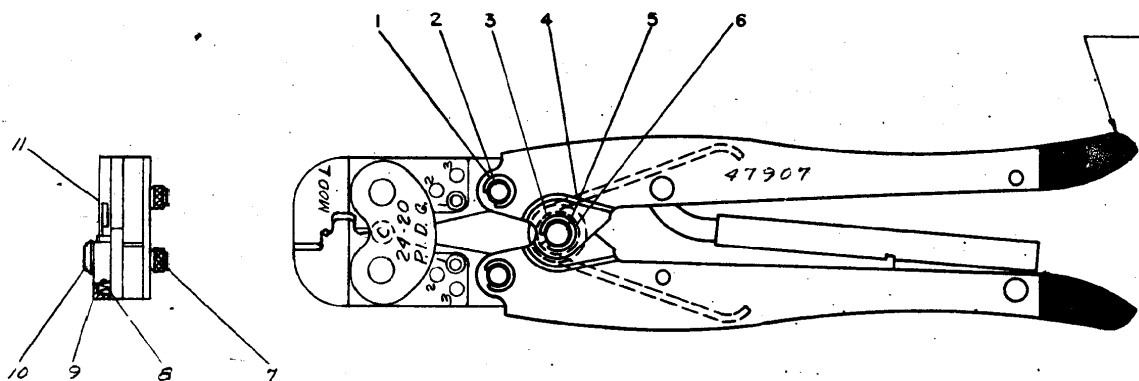
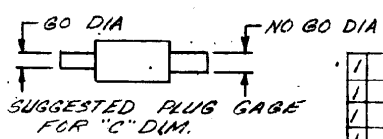


S

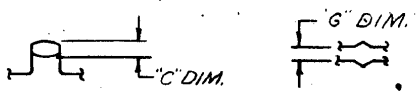


GAGE DIMENSIONS APPLY WHEN TOOL IS BOTTOMED BUT NOT UNDER PRESSURE.

FOR REPLACEMENT OF PARTS OTHER THAN LISTED, TOOL SHOULD BE RETURNED TO OUR FACTORY TO INSURE PROPER CERTI-CRIMP ADJUSTMENT.



ITEM NO	NUMBER	NAME	REMARKS
11	303542	STOP	
10	9-305977-1	SCREW	
9	302994	STOP HOUSING	
8	301801	SPRING	
7	39207	PIN ADJUSTMENT	
6	21045-6	RING - RETAINING	
5	300449	PIN - RETAINING	
4	39364	SPRING	
3	39366	COLLAR	
2	300432	PIN - RETAINING	
1	21045-3	RING - RETAINING	



GAGE DIMS.			
"C" DIM.	"G" DIM.	"C" DIM.	"G" DIM.
GO	NO GO	GO	NO GO
.083	.095	.130	.050

REVISION RECORD	DESCRIPTION
41 REVISED	PC 6/15/64
42 REVISED	PC 6/15/64
LTR	REVISION RECORD
DR	CHK
	DATE

NUMBER 47907	REQUIRED PER ASSEMBLY 1	©1969 AMP INCORPORATED ALL RIGHTS RESERVED. AMP PRODUCTS COVERED BY PATENTS AND/OR PATENTS PENDING.	CUSTOMER COPY REFERENCE ONLY
DR F. J. [Signature] 10-29-69	CHK R. [Signature] 12-2-69	MATERIAL AND FINISH +	AMP INCORPORATED AND BRIDGE PLAINS
DR R. [Signature] 12-2-69	WIRE RANGE - INSULATION 24-20	TYPE PRE-INSULATED DIAMOND GRIP	CLASS +
APP R. [Signature] 12-2-69	TOLERANCE EXCEPT AS NOTED ± .010	SCALE 1/2" = 1"	LDC M B
NAME HAND TOOL ASSEMBLY MODL	NO 47907	REV 1	REV 1

DIMENSIONS IN INCHES DO NOT SCALE PRINT

8 7 6 5 4 3 2 1