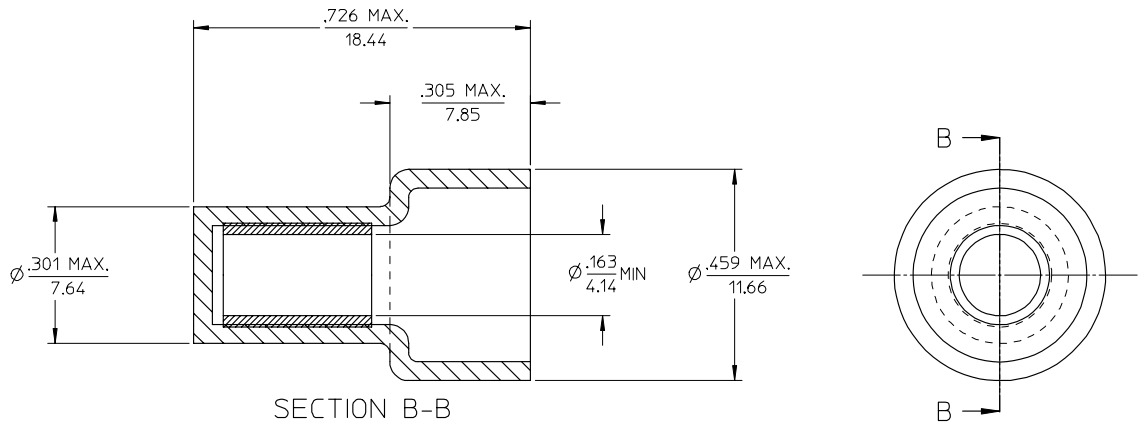


10	9	8	7	6	5	4	3	2	19160
MATERIAL NO.		ENG. NO.		DESCRIPTION					
191600190		NC-1810		NC-1810, CLOSED END 18-10 AWG CONNECTOR ASSY.					



SALES DRAWING

EC NO: ETC2003-0287 DRAWN BY: RICK 2003/05/02 CHECKED BY: HEB 2003/05/05 APPROVED BY: CROSS 2003/05/05	QUALITY SYMBOLS	GENERAL TOLERANCES (UNLESS SPECIFIED)	SCALE 5:1	DESIGN UNITS INCH	THIRD ANGLE PROJECTION	REVISE ON CAD ONLY															
	▽ 0 ▽ 0	<table border="1"> <tr> <th></th> <th>mm</th> <th>INCH</th> </tr> <tr> <td>4 PLACES</td> <td>± .005</td> <td>± .0005</td> </tr> <tr> <td>3 PLACES</td> <td>± .005</td> <td>± .0005</td> </tr> <tr> <td>2 PLACES</td> <td>± 0.13</td> <td>± .01</td> </tr> <tr> <td>1 PLACE</td> <td>± 0.25</td> <td>± .01</td> </tr> </table>		mm	INCH	4 PLACES	± .005	± .0005	3 PLACES	± .005	± .0005	2 PLACES	± 0.13	± .01	1 PLACE	± 0.25	± .01	DIMENSION STYLE IN/MM		TITLE	
			mm	INCH																	
		4 PLACES	± .005	± .0005																	
3 PLACES	± .005	± .0005																			
2 PLACES	± 0.13	± .01																			
1 PLACE	± 0.25	± .01																			
ANGULAR ±1/2°	DRAWN BY: DLM DATE: 03/04/29		CLOSED END CONNECTOR ASSEMBLY, 18-10 AWG																		
DRAFT WHERE APPLICABLE MUST REMAIN WITHIN DIMENSIONS	CHECKED BY: HEB DATE: 03/04/29		APPROVED BY: RWD DATE: 03/04/29		MOLEX INCORPORATED MATERIAL NO. (SEE CHART) DOCUMENT NO. SD-19160-008 SHEET NO. 1 OF 1																
1	THIS DRAWING CONTAINS INFORMATION THAT IS PROPRIETARY TO MOLEX INCORPORATED AND SHOULD NOT BE USED WITHOUT WRITTEN PERMISSION					B															

tb_frame_B
rev. B1 2000/08/01