

Current refinements (click to remove)

[Search Tips](#) 
 [Region](#) **USA** [Product Family](#) **Ring Terminal, Nylon Insulated** [Text Search](#): 'PN14-14R-C'

Your search criteria matched only one product, shown below.


- Ring tongue design assures a secure connection in high vibration applications
- Metal insulation grip sleeve crimps to wire insulation, providing protection to the crimp joint during high vibration applications
- Internal barrel serrations assure good wire contact and maximum tensile strength
- UL Flammability UL 94V-2/HB, maximum insulation temperature 221°F (105°C)
- UL and CSA rated up to 600 V per UL 486

‡UL and CSA approved tooling/product combinations.

Note: Wire sizes #26 – #22 AWG, are not UL Listed or CSA Certified.

Related Products
[Hand Operated Plier Type Tools](#)
[Contour Crimp™ Control...](#)
[Pneumatic Crimping Tool](#)

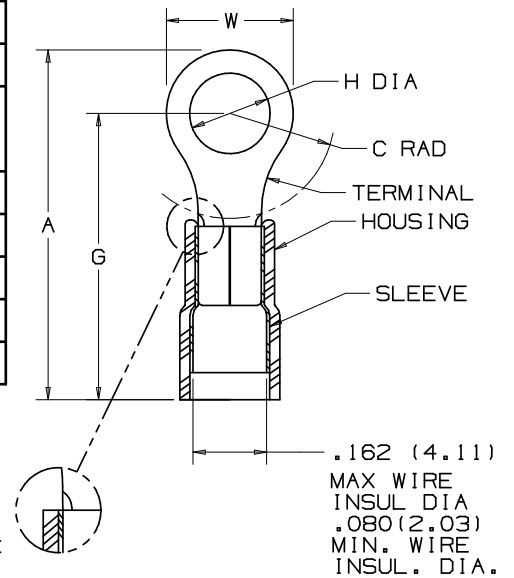
| | |
|-------------------------|---|
| Part Number: | PN14-14R-C |
| RoHS Compliancy Status: | Compliant |
| Part Description: | Ring Terminal, 18 – 14 AWG, 1/4 " stud size, nylon insulated. |
| Product Type: | Terminals |
| CSA Certified: | Yes |
| Mil. Std. Part Number: | MS25036-154 (Class 1 & 2) |
| UL Listed: | Yes |
| Length (In.): | 1.05 |
| Length (mm): | 26.7 |
| Width (In.): | .46 |
| Width (mm): | 11.7 |
| Clearance: | .38 |
| Max. Ins.: | .162 |
| Panduit Color Code: | Blue |
| Stock: | .03 |
| Stud Size: | 1/4" |
| Tool: | CT-100A‡, CT-600-A‡, CT-1550‡, CT-1551‡, CT-2500‡ |
| Wire Range: | 18 – 14 AWG |
| Min. Order UOM: | PC |
| Min. Order Qty.: | 100 |
| BOM Qty. (# of Pkgs.) | |

[Add to My Catalog](#)

 Please [register](#) to utilize the 'Bill of Materials', 'Submit Quotes' and 'My Catalog' features.

THIS COPY IS PROVIDED ON A RESTRICTED BASIS AND IS NOT TO BE USED IN ANY WAY DETRIMENTAL TO THE INTERESTS OF PANDUIT CORP.

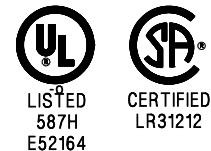
| PANDUIT PART NUMBER | PK | MILITARY PART NO. AND CLASS | STUD SIZE | DIMENSIONS in. | | | | |
|---------------------|----------|-----------------------------|-----------|----------------|---------------|---------------|---------------|---------------|
| | | | | A ±.03 | W ±.01 | C ±.02 | G ±.03 | H ±.01 |
| PN14-4R | -C -M | MS25036-152 CLASS 1 & 2 | #4 | .78 (19.8) | .25 (6.4) | .20 (5.1) | .66 (16.8) | .12 (3.1) |
| PN14-6R | -C -M | MS25036-107 CLASS 1 & 2 | #6 | .85 (21.6) | .31 (7.9) | .25 (6.4) | .71 (18.0) | .15 (3.8) |
| PN14-6RN | -C -M | MS25036-108 CLASS 1 & 2 | #6 | .76 (19.3) | .25 (6.4) | .20 (5.1) | .63 (16.0) | .15 (3.8) |
| PN14-8R | -C -M | MS25036-153 CLASS 1 & 2 | #8 | .85 (21.6) | .31 (7.9) | .25 (6.4) | .68 (17.3) | .17 (4.3) |
| PN14-10R | -C -M | MS25036-108 CLASS 1 & 2 | #10 | .85 (21.6) | .31 (7.9) | .25 (6.4) | .68 (17.3) | .20 (5.1) |
| PN14-14R | -C -M | MS25036-154 CLASS 1 & 2 | 1/4" | 1.05 (26.7) | .46 (11.7) | .38 (9.7) | .82 (20.8) | .27 (6.9) |
| PN14-56R | -C -M | MS25036-109 CLASS 1 & 2 | 5/16" | 1.05 (26.7) | .46 (11.7) | .38 (9.7) | .82 (20.8) | .34 (8.6) |
| PN14-38R | -L -M | MS25036-110 CLASS 1 & 2 | 3/8" | 1.14 (29.0) | .53 (13.5) | .43 (10.9) | .86 (21.8) | .40 (10.2) |
| PN14-12R | -L | ----- | 1/2" | 1.35 (34.3) | .72 (18.3) | .53 (13.5) | .99 (25.1) | .52 (13.2) |



NOTES:

- UL LISTED AND CSA CERTIFIED FOR:
 - 600V. MAX. BLDG. WIRE (1000V. MAX. IN SIGNS, FIXTURES & LUMINARIES)
 - 221°F. (105°C) MAX. TEMP. RATING
 - #18-14 AWG SOLID OR STRANDED COPPER WIRE WITH THE CT-550, CT-1550, CT-1551, CT-460 (UL ONLY, AND MIL CLASS 2), CT-400 (UL ONLY, MIL CLASS 2) INSTALLATION TOOLS
 - #16-14 AWG SOLID OR STRANDED COPPER WIRE WITH THE CT-100 INSTALLATION TOOL
- MATERIAL:
 - STAMPING- .03" (.8) THK. COPPER, TIN PLATED
 - HOUSING- NYLON, BLUE
 - SLEEVE- BRASS, TIN PLATED
- WIRE STRIP LENGTH- 7/32" +1/32, -0 (5.6, +.8, -0)
- PACKAGE QUANTITY: -L = 50, -D = 500, -M = 1000
- DIMENSIONS IN PARENTHESIS ARE IN MILLIMETERS

Panduit part numbers shown on this drawing meet the material requirements of RoHS (EUROPEAN DIRECTIVES 2002/95/EC) as proposed by the Technical Adaptation Committee



A41185_10

| | | | | | | | | | | | |
|-----|-------|------|-----|--|---------|------|-----|--|-----------------------|---------------|-----------------------|
| 10 | 2/07 | BCT | BCT | ADDED ALTERNATE SLEEVE / HOUSING DESIGN | TR00214 | LCA | TRO | | TINLEY PARK, ILLINOIS | | |
| 09 | 8/06 | DAW | DAW | ADDED MILITARY PART NO. & CLASS | TR00155 | LCA | TRO | | | | |
| 08 | 5/05 | JHNU | SKB | REVISED NOTE 1 PER PRODUCT MANAGEMENT REQUEST. | 12723 | SKB | TRO | 3PC. NYLON INSULATED, 16-14 BARREL, RINGS | | | |
| 07 | 12/02 | SAC | SKB | FOR PN14-12R DIM A WAS 1.34 & DIM G WAS .98 & CHANGED ALL METRIC DIMS TO ONE PLACE | 10504 | LA | TRO | | | | |
| REV | DATE | BY | CHK | DESCRIPTION | ECN # | CUST | PM | DRAWN BY FES | CHK'D RLS | SCALE NONE | DRAWING NO. A41185 |