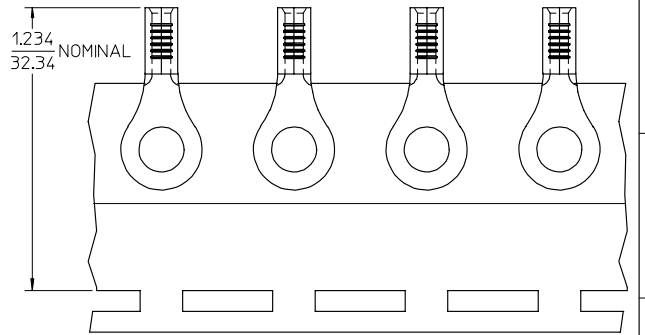
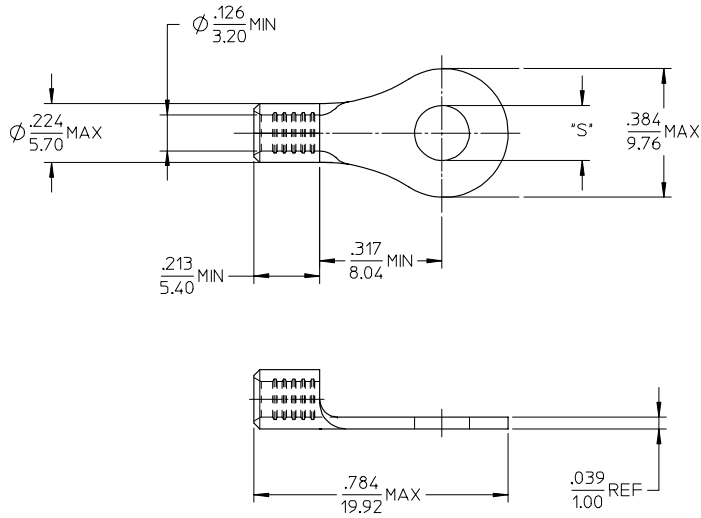


MATERIAL NO.	ENG. NO.	STUD SIZE	"S" MAX	DESCRIPTION
192030389	C-S-128-10	10	.212/5.38	LOOSE
192030094	C-S-128-10T	10	.212/5.38	TAPE



PARTS ON TAPE

NOTE(S):

1. MATERIAL: STEEL
2. WIRE SIZE: 12-10 AWG (4.0-6.0 MM<sup>2</sup>)
3. FINISH: NICKEL PLATING
4. PART IS ROHS COMPLIANT.
5. AMBIENT OPERATING TEMPERATURE UP TO 900 °F (483 °C).

ADDED OPERATING TEMP		QUALITY SYMBOLS	GENERAL TOLERANCES (UNLESS SPECIFIED)		DIMENSION STYLE		SCALE	DESIGN UNITS	THIRD ANGLE PROJECTION
EC NO:	DATE		mm	INCH	IN/MM	4:1	INCH	☉	
2007/03/13	2007/03/13	▽=0 ▽=0	4 PLACES ± --- ± ---	± --- ± ---	DRAWN BY	DATE	TITLE	RING TONGUE TERMINAL, 12-10 AWG, KRIMP TITE, 900 DEG F (483 DEG C)	
2007/03/13	2007/03/13		3 PLACES ± --- ± ---	± --- ± ---	DMYRICK	2005/04/06			
CHKD: JACQUEL	2007/03/13		2 PLACES ± --- ± ---	± --- ± ---	CHECKED BY	DATE			
APPR: JACQUEL	2007/03/13		1 PLACE ± --- ± ---	± --- ± ---	RDEROSS	2005/04/06			
DESCRIPTION			ANGULAR ± --- °		APPROVED BY	DATE	MOLEX INCORPORATED	DOCUMENT NO. SD-19203-018	SHEET NO. 1 OF 1
REV			DRAFT WHERE APPLICABLE MUST REMAIN WITHIN DIMENSIONS		MATERIAL NO.	DATE			
D			SEE CHART		SIZE	DATE			