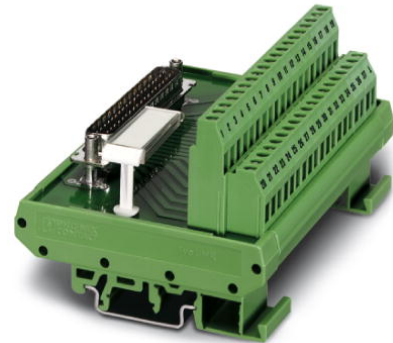


FLKM-D37 SUB/S

Order No.: 2281115



<http://eshop.phoenixcontact.de/phoenix/treeViewClick.do?UID=2281115>

VARIOFACE module, with screw connection and D-Subminiature pin strip, for mounting on NS 35/7.5 or NS 32, 37-pos.

Commercial data	
EAN	4017918054564
Pack	5 Pcs.
Customs tariff	85369010
Weight/Piece	0.19899 KG
Catalog page information	Page 248 (IF-2007)

Product notes

WEEE/RoHS-compliant since:
06/29/2006



<http://www.download.phoenixcontact.com>
Please note that the data given here has been taken from the online catalog. For comprehensive information and data, please refer to the user documentation. The General Terms and Conditions of Use apply to Internet downloads.

Technical data	
General data	
Nominal voltage U_N	125 V AC/DC
Max. current carrying capacity per branch	2.5 A
Number of positions	37
Length	77 mm

Width	101.3 mm
Height	58.5 mm
Ambient temperature (operation)	-20 °C ... 50 °C
Ambient temperature (storage/transport)	-20 °C ... 70 °C
Test voltage	800 V (50 Hz, 1 min.)
Mounting position	Any
Standards/regulations	IEC 60664
	DIN EN 50178
	IEC 62103
Pollution degree	2
Surge voltage category	II

Connection data

Connection 1	PCB connection
Connection in acc. with standard	IEC / EN
Type of connection	Screw connection
Conductor cross section solid min.	0.2 mm ²
Conductor cross section solid max.	4 mm ²
Conductor cross section stranded min.	0.2 mm ²
Conductor cross section stranded max.	2.5 mm ²
Conductor cross section AWG/kcmil min.	24
Conductor cross section AWG/kcmil max	12
Stripping length	8 mm
Screw thread	M 3
Connection 2	D-SUB connection
Type of connection	Pluggable
Number of positions	37

Certificates / Approvals

Approval logo



CUL

Nominal voltage U _N	125 V
--------------------------------	-------

Nominal current I _N	2.5 A
AWG/kcmil	30-12
UL	
Nominal voltage U _N	125 V
Nominal current I _N	2.5 A
AWG/kcmil	30-12
Certification	CUL, GOST, UL

Accessories

Item	Designation	Description
Cable/conductor		
2302421	CABLE D-SUB-B-B-S/.../.../...	Shielded round cable, assembled with two D-SUB female connectors, variable cable length
2302340	CABLE D-SUB-S/.../.../...	Shielded round cable, assembled with one D-SUB male and one female connector, variable cable length
2302191	CABLE-D37SUB/B/S/ 50/ KONFEK/S	Round shielded cable set, with 37-pos. D-SUB female and male connectors, cable length: 0.5 m
2302201	CABLE-D37SUB/B/S/100/ KONFEK/S	Round shielded cable set, with 37-pos. D-SUB female and male connectors, cable length: 1 m
2302214	CABLE-D37SUB/B/S/150/ KONFEK/S	Round shielded cable set, with 37-pos. D-SUB female and male connectors, cable length: 1.5 m
2302227	CABLE-D37SUB/B/S/200/ KONFEK/S	Round shielded cable set, with 37-pos. D-SUB female and male connectors, cable length: 2 m
2302230	CABLE-D37SUB/B/S/300/ KONFEK/S	Round shielded cable set, with 37-pos. D-SUB female and male connectors, cable length: 3 m
2302243	CABLE-D37SUB/B/S/400/ KONFEK/S	Round shielded cable set, with 37-pos. D-SUB female and male connectors, cable length: 4 m
2302256	CABLE-D37SUB/B/S/600/ KONFEK/S	Round shielded cable set, with 37-pos. D-SUB female and male connectors, cable length: 6 m

Drawings

Schematic diagram

