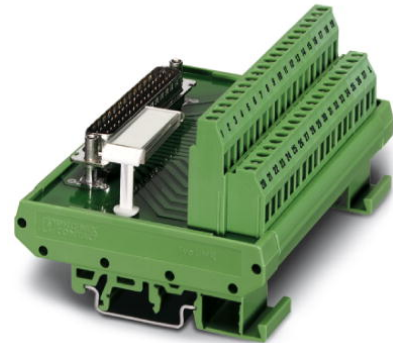


FLKM-D37 SUB/S

Order No.: 2281115




<http://eshop.phoenixcontact.de/phoenix/treeViewClick.do?UID=2281115>

VARIOFACE module, with screw connection and D-Subminiature pin strip, for mounting on NS 35/7.5 or NS 32, 37-pos.



Commercial data

| | |
|--------------------------|---|
| GTIN (EAN) |  4 017918 054564 |
| sales group | I011 |
| Pack | 5 pcs. |
| Customs tariff | 85369010 |
| Catalog page information | Page 248 (IF-2007) |

Product notes

WEEE/RoHS-compliant since:
03/31/2006



<http://www.download.phoenixcontact.com>
Please note that the data given here has been taken from the online catalog. For comprehensive information and data, please refer to the user documentation. The General Terms and Conditions of Use apply to Internet downloads.

Technical data

General data

| | |
|---|---|
| Nominal voltage U_N | 125 V AC/DC |
| Max. current carrying capacity per branch | 2.5 A 1.5 A (with even load on all branches) |

| | |
|---|-----------------------|
| Number of positions | 37 |
| Width | 101.3 mm |
| Height | 77 mm |
| Depth | 58.5 mm |
| Ambient temperature (operation) | -20 °C ... 50 °C |
| Ambient temperature (storage/transport) | -20 °C ... 70 °C |
| Test voltage | 800 V (50 Hz, 1 min.) |
| Mounting position | Any |
| Standards/regulations | IEC 60664 |
| | DIN EN 50178 |
| | IEC 62103 |
| Pollution degree | 2 |
| Surge voltage category | II |

Connection data

| | |
|--|---------------------|
| Connection 1 | PCB connection |
| Connection in acc. with standard | IEC / EN |
| Connection method | Screw connection |
| Conductor cross section solid min. | 0.2 mm ² |
| Conductor cross section solid max. | 4 mm ² |
| Conductor cross section stranded min. | 0.2 mm ² |
| Conductor cross section stranded max. | 2.5 mm ² |
| Conductor cross section AWG/kcmil min. | 24 |
| Conductor cross section AWG/kcmil max | 12 |
| Stripping length | 8 mm |
| Screw thread | M3 |
| Connection 2 | D-SUB connection |
| Connection method | Pluggable |
| Number of positions | 37 |

Certificates / Approvals



Certification

CUL, GOST, UL

Accessories

| Item | Designation | Description |
|------------------------|--------------------------------|--|
| Cable/conductor | | |
| 2302421 | CABLE D-SUB-B-B-S/.../.../... | Shielded round cable, assembled with two D-SUB female connectors, variable cable length |
| 2302340 | CABLE D-SUB-S/.../.../... | Shielded round cable, assembled with one D-SUB male and one female connector, variable cable length |
| 2926221 | CABLE-D-37SUB/F/OE/0,25/S/0,5M | Shielded cable with a 37-pos. D-SUB female connector and one open end. The individual wires are labeled 1 to 37 and fitted with ferrules. The braided shield is routed to a separate cable end. Cable length: 0.5 m. |
| 2926234 | CABLE-D-37SUB/F/OE/0,25/S/1,0M | Shielded cable with a 37-pos. D-SUB female connector and one open end. The individual wires are labeled 1 to 37 and fitted with ferrules. The braided shield is routed to a separate cable end. Cable length: 1 m. |
| 2926247 | CABLE-D-37SUB/F/OE/0,25/S/1,5M | Shielded cable with a 37-pos. D-SUB female connector and one open end. The individual wires are labeled 1 to 37 and fitted with ferrules. The braided shield is routed to a separate cable end. Cable length: 1.5 m. |
| 2926250 | CABLE-D-37SUB/F/OE/0,25/S/2,0M | Shielded cable with a 37-pos. D-SUB female connector and one open end. The individual wires are labeled 1 to 37 and fitted with ferrules. The braided shield is routed to a separate cable end. Cable length: 2 m. |
| 2926263 | CABLE-D-37SUB/F/OE/0,25/S/3,0M | Shielded cable with a 37-pos. D-SUB female connector and one open end. The individual wires are labeled 1 to 37 and fitted with ferrules. The braided shield is routed to a separate cable end. Cable length: 3 m. |
| 2926276 | CABLE-D-37SUB/F/OE/0,25/S/4,0M | Shielded cable with a 37-pos. D-SUB female connector and one open end. The individual wires are labeled 1 to 37 and fitted with ferrules. The braided shield is routed to a separate cable end. Cable length: 4 m. |
| 2926289 | CABLE-D-37SUB/F/OE/0,25/S/6,0M | Shielded cable with a 37-pos. D-SUB female connector and one open end. The individual wires are labeled 1 to 37 and fitted with ferrules. The braided shield is routed to a separate cable end. Cable length: 6 m. |
| 2302191 | CABLE-D37SUB/B/S/ 50/KONFEK/S | Round shielded cable set, with 37-pos. D-SUB female and male connectors, cable length: 0.5 m |
| 2302201 | CABLE-D37SUB/B/S/100/KONFEK/S | Round shielded cable set, with 37-pos. D-SUB female and male connectors, cable length: 1 m |
| 2302214 | CABLE-D37SUB/B/S/150/KONFEK/S | Round shielded cable set, with 37-pos. D-SUB female and male connectors, cable length: 1.5 m |
| 2302227 | CABLE-D37SUB/B/S/200/KONFEK/S | Round shielded cable set, with 37-pos. D-SUB female and male connectors, cable length: 2 m |
| 2302230 | CABLE-D37SUB/B/S/300/KONFEK/S | Round shielded cable set, with 37-pos. D-SUB female and male connectors, cable length: 3 m |

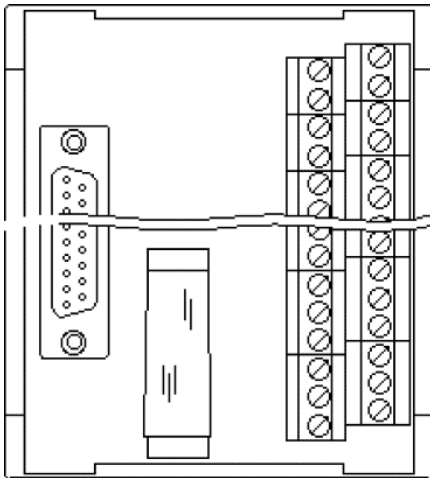
| | | |
|---------|-----------------------------------|--|
| 2302243 | CABLE-D37SUB/B/S/400/ KONFEK/S | Round shielded cable set, with 37-pos. D-SUB female and male connectors, cable length: 4 m |
| 2302256 | CABLE-D37SUB/B/S/600/ KONFEK/S | Round shielded cable set, with 37-pos. D-SUB female and male connectors, cable length: 6 m |

General

| | | |
|---------|-----------------------------------|---|
| 2900907 | CABLE-D-37SUB-F-OE-0,25- S/... | Shielded cable with a 37-pos. D-SUB female connector and one open end. The individual wires are labeled 1 to 37 and fitted with ferrules. The braided shield is routed to a separate cable end. Cable length: variable. |
|---------|-----------------------------------|---|

Diagrams/Drawings

Schematic diagram



Address

PHOENIX CONTACT Inc., USA
586 Fulling Mill Road
Middletown, PA 17057, USA
Phone (800) 888-7388
Fax (717) 944-1625
<http://www.phoenixcon.com>



© 2011 Phoenix Contact
Technical modifications reserved;