

Switch Language

English

Need Assistance?

[Contact Us](#)
[Find a Distributor](#)
[Order Samples](#)
[Tech Library](#)

[Printer-friendly page](#)

[Email this page](#)

[Home](#) [Accessories](#) [Datasheet](#)

Part Number: 0015040292

Status: Active

Description: Universal Polarizing Key, Black

Documents:

Note - Please disable browser pop-up blockers for documents on www.molex.com

[Drawing \(PDF\)](#)

[Related Catalog Page \(PDF\)](#)

Order Products:

[Check Distributor Inventory](#)

[Add to My Parts](#)

[Request Samples](#)

Part Detail: [\(show all\)](#)

[General](#) [Physical](#) [Material Info](#)

General

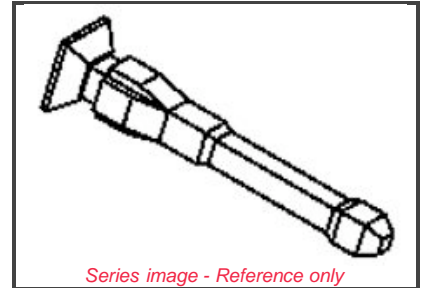
Product Family	Accessories
Series	40713
Comments	Delivered on a Carrier With 20 Parts per Strip
Component Type	Polarizing Key
Product Name	MX-50™

Physical

Circuits (Loaded)	1
Lock to Mating Part	No
Packaging Type	Bag

Material Info

Old Part Number	40713-01
-----------------	----------



EU RoHS

ELV and RoHS Compliant

China RoHS



Need more information on product compliance?

Email productcompliance@molex.com

Please visit the [Contact Us](#) section for any non-product compliance questions.

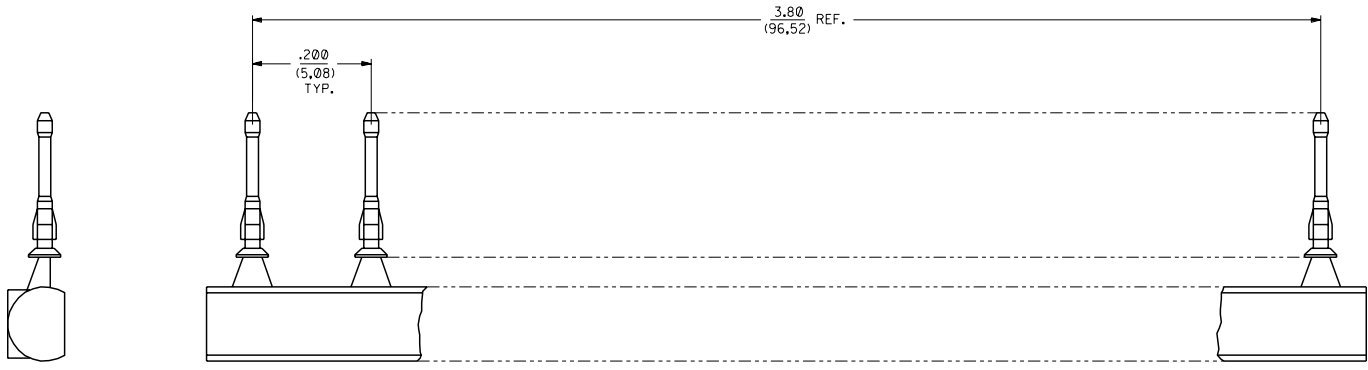
Search Parts in this Series

[40713](#) Series

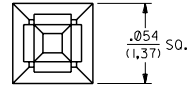
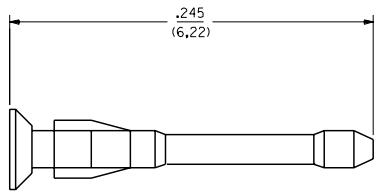
Use With

[70066](#) SL™ Crimp Housing
[70450](#) SL™ Crimp Housing
[70400](#) C-Grid SL™ IDT Connector Assembly
[70430](#) C-Grid SL™
[71850](#) C-Grid® Receptacle
[71395](#) C-Grid® PCB Connector

40713



SCALE 8:1



SCALE 20:1

NOTES:

1. MATERIAL: G.F. POLYESTER; UL 94V-0, COLOR: SEE CHART
2. TO BE USED WITH PRODUCT HAVING .032 - .038 SQ. PIN WINDOWS.
3. KEY IS MOLDED AS A 20-PIECE UNIT.
4. PART FUNCTIONS WITH OR WITHOUT PRESENCE OF CONTACT IN HOUSING.

15-04-0293	WHITE
15-04-0292	BLACK
ORDER NO.	COLOR PIN MATERIAL

ADD TO CAD
ECN UDT2001-0538
SCHAFER 08/11/17

DIMENSIONS SHOWN METRIC INCH		MFG. SHL. REV. LTR.		REVISIONS																	
UNLESS OTHERWISE SPECIFIED TOLERANCES ANGULAR 1/2°		▽ = 0		REVISE ONLY ON CAD SYSTEM																	
<table border="1"> <tr> <th colspan="2">INCH</th> <th colspan="2">METRIC</th> </tr> <tr> <td>± .005</td> <td>---</td> <td>---</td> <td>---</td> </tr> <tr> <td>± .01</td> <td>± 0.13</td> <td>---</td> <td>---</td> </tr> <tr> <td>---</td> <td>± 0.25</td> <td>---</td> <td>---</td> </tr> </table>		INCH		METRIC		± .005	---	---	---	± .01	± 0.13	---	---	---	± 0.25	---	---	TITLE		UNIVERSAL POLARIZING PIN	
INCH		METRIC																			
± .005	---	---	---																		
± .01	± 0.13	---	---																		
---	± 0.25	---	---																		
DRAWING WHERE APPLICABLE MUST REMAIN WITHIN DIMENSIONS		MOLEX INCORPORATED		SHEET NO. DATE																	
DRAWN BY: JJS		153EJLL		1 OF 1 11/17/00																	
CHECKED BY: DJB		68532		PART NO. SD-40713-00																	
APP'D: DJB		SCALE 20:1		SEE CHART																	
		FILE NAME		THIS DRAWING CONTAINS INFORMATION THAT IS PROPRIETARY TO MOLEX INC. AND SHOULD NOT BE USED WITHOUT WRITTEN PERMISSION.																	