

Switch Language

English

Need Assistance?

Contact Us  
Find a Distributor  
Order Samples  
Tech Library

Printer-friendly page

Email this page

[Home](#)   [Crimp Housings](#)   [Datasheet](#)

**Part Number:** 0039012085

**Status:** Active    **Overview:** [Mini-Fit Jr.™](#)

**Description:** 4.20mm (.165") Pitch Mini-Fit Jr.™ Receptacle Housing, Dual Row, UL 94V-0, 8 Circuits,

**Documents:**

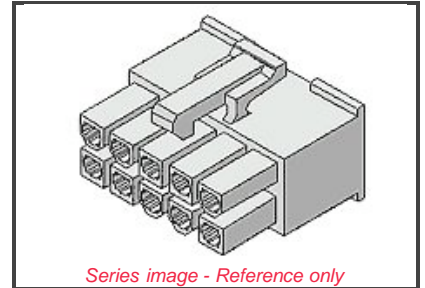
*Note - Please disable browser pop-up blockers for documents on www.molex.com*

[Drawing \(PDF\)](#)

[3D Model](#)

[Test Summary \(PDF\)](#)

[Related Catalog Page \(PDF\)](#)



**Order Products:**

[Check Distributor Inventory](#)

[Add to My Parts](#)

[Request Samples](#)

**Part Detail:** ([show all](#))

[General](#)   [Physical](#)   [Electrical](#)   [Material Info](#)

**General**

Product Family	Crimp Housings
Series	<a href="#">5557</a>
Comments	Use with Strain Relief 41995 series
Overview	<a href="#">Mini-Fit Jr.™</a>
Product Name	Mini-Fit Jr.™

**Physical**

Breakaway	No
Circuits (maximum)	8
Color - Resin	Ivory
Flammability	94V-0
Flammability	94V-2
Gender	Female
Material - Resin	Nylon
Number of Rows	2
Packaging Type	Bag
Panel Mount	No
Pitch - Mating Interface (in)	0.165 In
Pitch - Mating Interface (mm)	4.20 mm
Pitch - Term. Interface (in)	0.165 In
Pitch - Term. Interface (mm)	4.20 mm
Polarized to Mating Part	Yes
Stackable	No
Temperature Range - Operating	-40°C to +105°C

**Electrical**

CSA	LR19980
TUV	R75142
UL	E29179

**Material Info**

Old Part Number	5557-08R-210
-----------------	--------------

**EU RoHS**

**ELV and RoHS Compliant**

**China RoHS**



**Need more information on product compliance?**

Email [productcompliance@molex.com](mailto:productcompliance@molex.com)

Please visit the [Contact Us](#) section for any non-product compliance questions.

**Search Parts in this Series**

[5557](#) Series

**Mates With**

[5559d](#), [5566vw](#), [5566vwo](#), [5569rdf](#),  
[5569rdp](#), [43810a](#), [43810b](#), [43810c](#),  
[43810d](#), [44068a](#), [44068b](#), [44068c](#),  
[44068d](#), [44281](#), [44472dw](#), [44472dwo](#),  
[87427](#), [87427r](#), [87427rf](#), [42404](#),  
[44474](#), [42440](#), [43879](#), [42475](#)

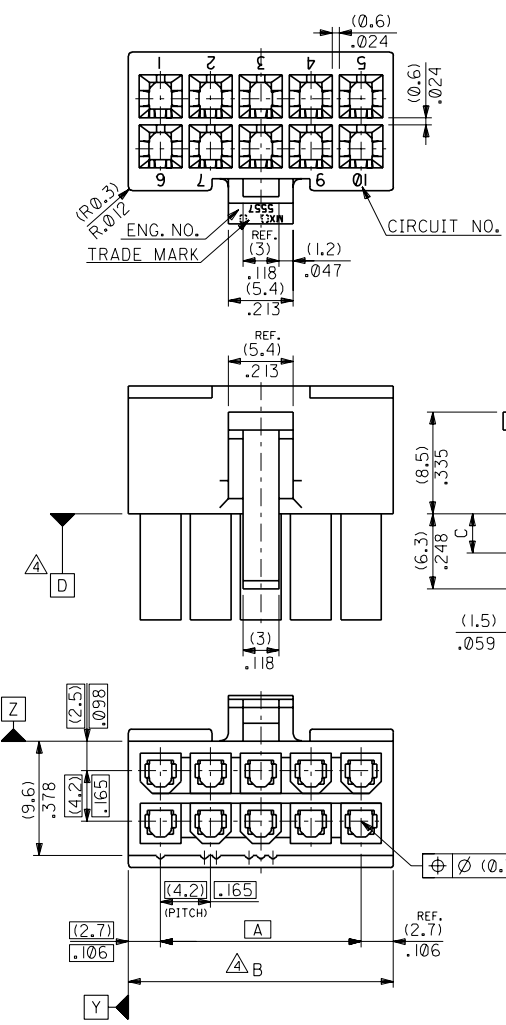
**Use With**

[41995](#) Strain Relief

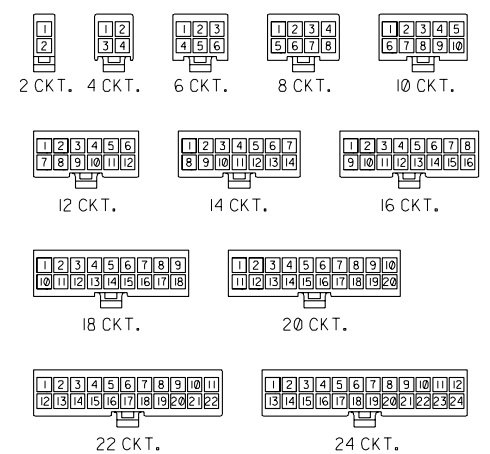
ENG. NO. SD-5557-NR-210  
EDP NO. 39-01-2\*\*5

ALL DIMENSIONS IN METRIC DO NOT SCALE DRAWING

8 7 6 5 4 3 2 1



**NOTES**  
 1. TERMINAL : 5556 SERIES  
 2. MATE WITH : 5559 SERIES  
 5566 SERIES  
 5569 SERIES  
 3. (METRIC) VALUES SHOWN GOVERN OVER ENGLISH CONVERSION VALUES.  
 △ TO BE MEASURED AT POSITION OF □ SURFACE.



CIRCUIT SIZE LAYOUT (SCALE: 1-1)

(3.6)	(47.4)	2.031	(46.2)	1.819	39-01-2245	5557-24R-210	24
.142	(43.2)	1.866	(42)	1.654	-2225	-22R-210	22
	(39)	1.701	(37.8)	1.488	-2205	-20R-210	20
	(34.8)	1.535	(33.6)	1.323	-2185	-18R-210	18
	(30.6)	1.37	(29.4)	1.158	-2165	-16R-210	16
	(26.4)	1.205	(25.2)	.992	-2145	-14R-210	14
(3.3)	(22.2)	1.039	(21)	.827	-2125	-12R-210	12
.129	(18)	.874	(16.8)	.661	-2105	-10R-210	10
	(13.8)	.709	(12.6)	.496	-2085	-08R-210	8
	(9.6)	.543	(8.4)	.331	-2065	-06R-210	6
	(5.4)	.378	(4.2)	.165	-2045	-04R-210	4
		.213			39-01-2025	5557-02R-210	2

材料 MATERIAL		66NYLON (UL94V-0)	
仕上げ FINISH		---	
適用電線範囲 WIRE RANGE		---	
被覆外径 INS. RANGE		---	
DRAWN BY 90/2/22		CHK'D BY 97/0/08	
S.MOCHIZUKI		M.FUKUSHIMA	
APP'D BY 97/0/08		尺度 SCALE 3-1	
M.FUKUSHIMA			

角度 ANGLE	±30
30以上 OVER	±8.4
10以上 未過 UNDER	±3.3
10以下 未過 UNDER	±0.2
一般公差 GENERAL TOLERANCES	

REVISE ONLY ON CAD SYSTEM  
 THIS DRAWING CONTAINS INFORMATION THAT IS PROPRIETARY TO MOLEX/JAPAN AND SHOULD NOT BE USED WITHOUT WRITTEN PERMISSION  
 本図面は日本モレックス(株)の所有する情報を含むもので 当社の許可なく複製を禁止する。

5557-210 MXJ-8