



Copyright FCI



FCIconnect.com



1 | 2

3

4

PRODUCT NUMBER
20020620-MXXXXXLF

20020620-□ □ □ □ △ ○ □ L F

PITCH
M: 7.62 mm

POLES

02: 2 POLES
03: 3 POLES
04: 4 POLES

16: 16 POLES

LF : DENOTED RoHS COMPATIBLE

1 : STANDARD PRODUCT
W/ BOX PACKING

HOUSING CODE

PROPERTY TABLE	
FCI SERIES NAME	07-762
PITCH (mm)	7.62
VOLTAGE RATING (VAC)	300
CURRENT RATING (A)	32
WITHSTANDING VOLTAGE (kV)	1.6
OPERATING TEMP. (°C)	-40~+115
SOLDERING TEMP. (°C)	250±10 (5 sec.)
POLES AVAILABLE	02~16
SAFETY CERTIFICATE	

CODE	COLOR	AVAILABILITY
1	GREEN(RAL 6018/T)	STANDARD
2	BLACK	ON REQUEST ONLY
3	GREY(RAL 7004/P)	ON REQUEST ONLY
4	BLUE(RAL 5015/A)	ON REQUEST ONLY

NOTES:

MATERIALS

1-1 HOUSING: THERMALPLASTIC RESIN, UL 94V-0 RATED.
1-2 TERMINAL: COPPER ALLOY, TIN PLATED.

2. PRODUCTION SPECIFICATION REFER TO FCI GS-12-625.
3. BOXED PACKAGING.

DETAILED PRODUCT PACKING SPECIFICATION REFER TO FCI GS-14-1394.

4. FCI, SAFETY CERTIFICATE LOGO AND SERIES NAME TO BE SHOWN ON PRODUCT SURFACE.

5. THE PRODUCTS WHERE THE PART NUMBER END IN "LF" MEET THE EUROPEAN UNION DIRECTIVE AND OTHER COUNTRY REGULATIONS AS DESCRIBED IN GS-22-008.

6. RECOMMENDED SOLDERING PROCESS BY WAVE SOLDER.

mat'l. code		surface ASME Y14.5		tolerance ASME Y14.5		projection		product family	
A 0609-0203 BF 062509		tolerances unless otherwise specified		X.±0.5		MM		TERMINAL BLOCK	
B T09-1148 BF 111709		angles		X.X±0.3		[INCH]		TERMINAL BLOCK	
C T10-0042 WL 030310		X±1°		X.XX±0.1		scale		PLUGGABLE SOCKET, STRAIGHT	
D T10-0159 WL 100410		dr		BEER FU 062509				dwg no	
E T10-0187 WL 121410		enrg		BEER FU 062509				sheet 1 of 2	
		chr		GARY HSIEH 062509				size	
		appd		JOSEPH HSIA 062509				20020620 A4	
sheet index		revision sheet		E 1		E 2		type	
								CUSTOMER Drawing	

form: A4mmXLc

1 |

2

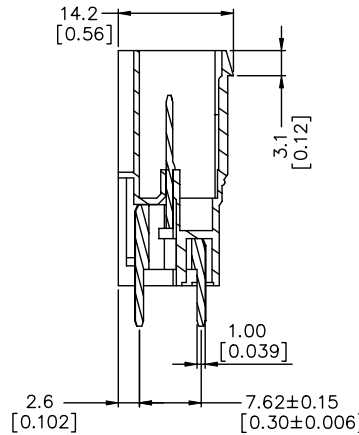
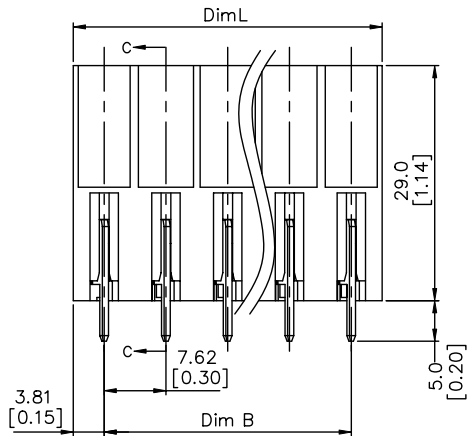
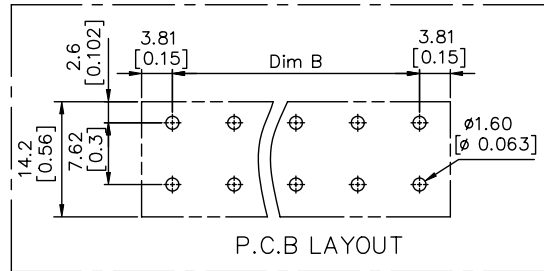
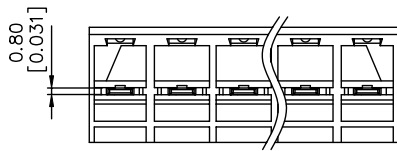
PDM: Rev:E 3 | STATUS:Released Printed: Dec 22, 2010 4

Copyright FCI



FCIconnect.com

PRODUCT NUMBER	SERIES NAME	PITCH
20020620-MXXXXXXLF	07-762	7.62 mm



N = Number of poles
 Dim L = NX7.62 [0.300]
 Dim B = (N-1)x7.62 [0.300]

TOL.	Dim L	Dim B
2-5p	±0.20 [0.008]	
6-10p	±0.25 [0.010]	
11-13p	±0.35 [0.014]	
14-16p	±0.40 [0.016]	

Section C-C

mat'l. code	surface ASME Y14.5	tolerance ASME Y14.5	projection	product family
ltr ecn no dr date	tolerances unless otherwise specified		MM [INCH] scale	TERMINAL BLOCK
E	angles	X.±0.5 X.X±0.3 X.XX±0.1	MM [INCH] scale	title
				TERMINAL BLOCK PLUGGABLE SOCKET, STRAIGHT
	dr	BEER FU 062509	FCI	dwg no
	enr	BEER FU 062509		20020620
	chr	GARY HSIEH 062509		sheet 2 of 2
	appd	JOSEPH HSIA 062509		size A4
sheet index	revision sheet			type CUSTOMER Drawing

form: A4mmXLc

PDM: Rev:E 3 | STATUS:Released | Printed: Dec 22, 2010 4