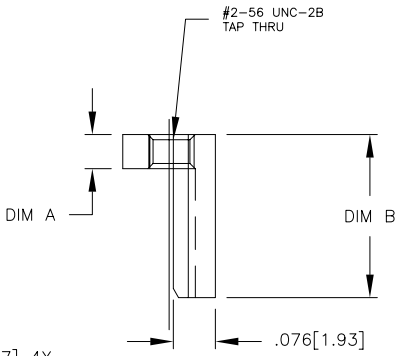
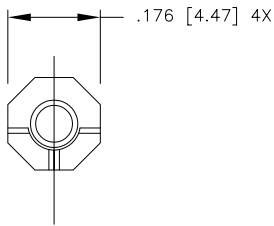
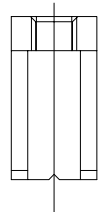
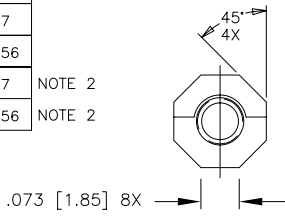


PRODUCT NO.	DIM A	DIM B
77030-001	.065/1.65	.310/7.87
77030-002	.450/11.43	.770/19.56
77030-001LF	.065/1.65	.310/7.87
77030-002LF	.450/11.43	.770/19.56

NOTE 2  
NOTE 2



NOTES:

- ① MATERIAL: STAINLESS STEEL NO.416
- ② THIS PRODUCT MEETS EUROPEAN UNION DIRECTIVES AND OTHER COUNTRY REGULATIONS AS DESCRIBED IN GS-22-008.

mat'l. code		surface	tolerance	projection	product family
NOTE 1		ISO 1302	ISO 406		HPC
ltr	ecn	no	dr	date	tolerances unless otherwise specified
B	14184	JRL	10/14/87		angles linear .xxx±.01/3
C	v90010	SAR	1/15/99		linear .xxx±.005/13
D	v00717	LSS	3/22/00		0°±2° .xxx±.0020/.05
E	v05-0643	DCH	7/8/05	dr	D.HORCHLER 7/8/05
F	M06-0283	MHT	7/27/06	enrg	D.HORCHLER 7/8/05
				chr	T.BREWBAKER 7/8/05
				appd	D.HORCHLER 7/8/05

sheet index	revision sheet	F	1																	

title	product family
8 POSITION SCREW TYPE ORIENTATION INSERT	HPC
dwg no 77030	sheet 1 of 1 size A3
type Product Customer Drawing	

PDM: Rev:F STATUS: Released Printed: May 14, 2011