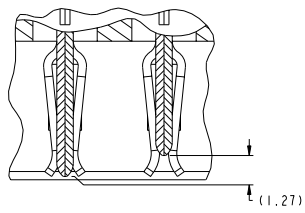
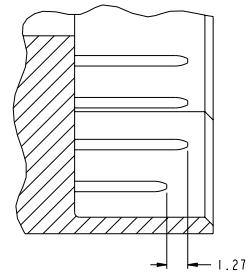


www.fciconnect.com				surface	tolerance std	projection	MM
				ASME Y14.5	ASME Y14.5	ASME Y14.5	
TOLERANCES UNLESS OTHERWISE SPECIFIED							
Dr	T. HOUTZ	3/15/06	ANGULAR	0.X	±.3	size	Scale
Eng	H. NGO	3/15/06	LINEAR	0.XXX	±.10	ECN	1:1
Chr	H. NGO	3/15/06	0° ±2°	0.XXX	±.050		
Appr	H. NGO	3/15/06	Product family		HCI	Spec ref	
D	V08-0053	BAB	R/A HEADER ASSY 10DC-24S		10065864	Rev.	
E	V08-0243	TH	HCI POWER CONNECTOR			CUSTOMER	sheet 1 of 5
				cat no			

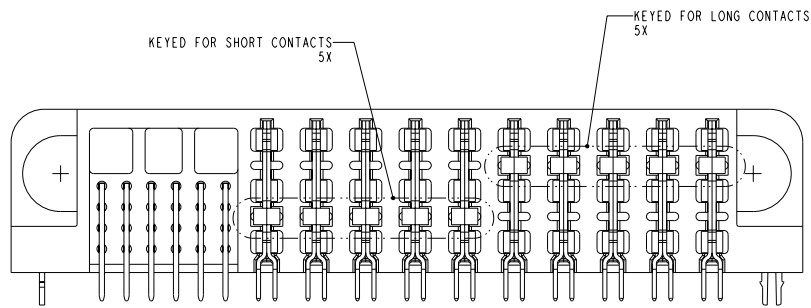
Copyright FCJ



DETAIL C
SCALE 6:1
 POWER MATING SEQUENCE



SECTION W-W
SCALE 6:1
 SIGNAL MATING SEQUENCE

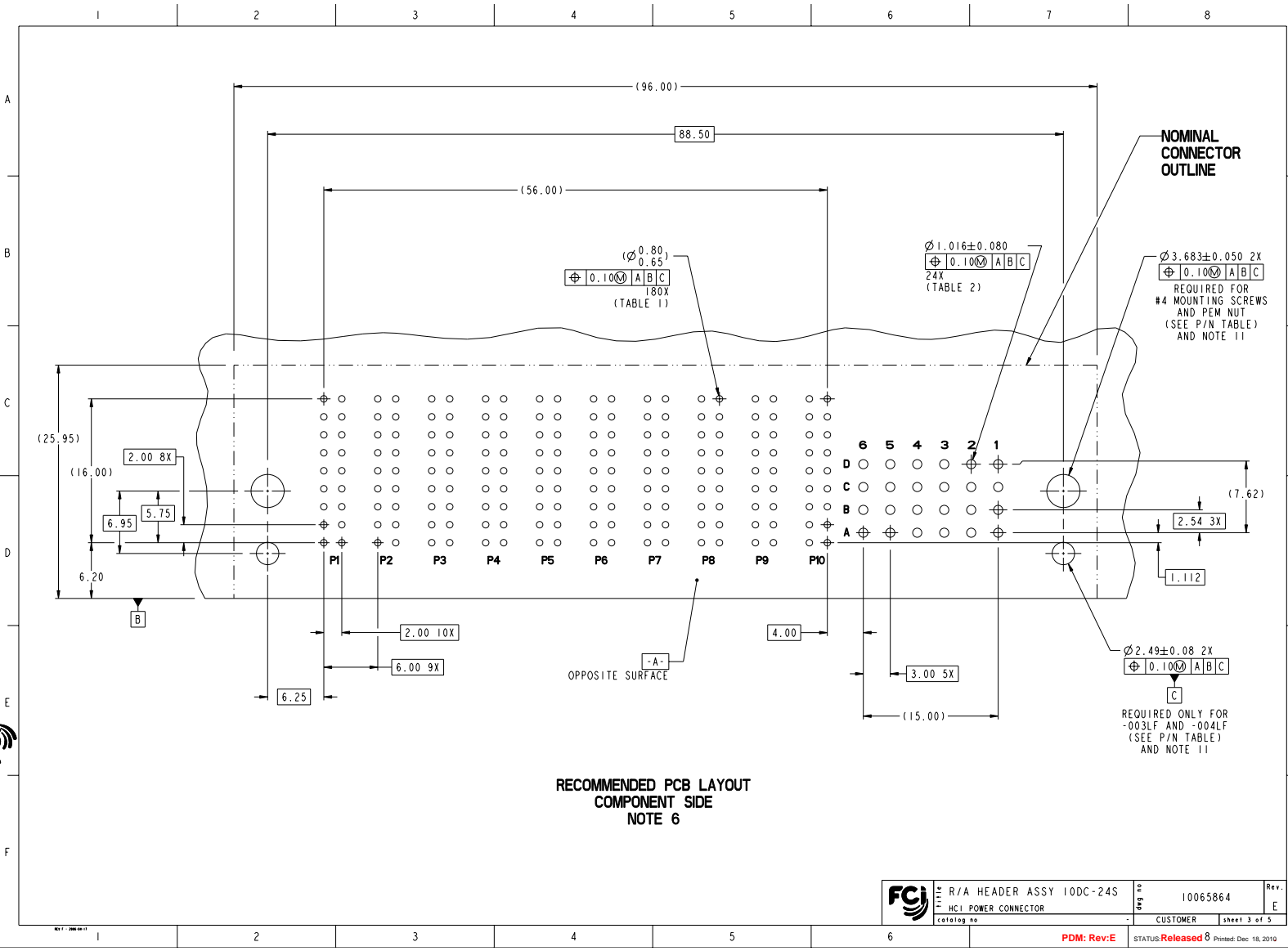


VIEW G-G

Copyright FCJ
FCJ

	R/A HEADER ASSY 10DC-24S HCl POWER CONNECTOR	Part No 10065864	Rev. E
	CUSTOMER	sheet 2 of 5	STATUS: Released 8

PDM: Rev:E STATUS: Released 8 Printed: Dec 18, 2010



**RECOMMENDED PCB LAYOUT
COMPONENT SIDE
NOTE 6**

	R/A HEADER ASSY 10DC-24S HCl POWER CONNECTOR <small>catalog no.</small>	drawing no. 10065864	Rev. E
	CUSTOMER	sheet 3 of 5	STATUS: Rev:E Released 8 Printed: Dec 18, 2010

1 2 3 4 5 6 7 8

A

B

C


D

E

F

TOP LAYER DESCRIPTION	TABLE 1 (HCl POWER) PLATED THROUGH-HOLE REQUIREMENTS							
	DRILLED HOLE DIAMETER	COPPER THICKNESS	TIN-LEAD THICKNESS	NICKEL THICKNESS	GOLD THICKNESS	TIN THICKNESS	SILVER THICKNESS	FINISHED HOLE DIAMETER
TIN-LEAD	0.81-0.86 (0.85 DRILL)	0.025 - 0.050	0.005 - 0.015	--	--	--	--	0.65 - 0.80
IMMERSON TIN	0.81-0.86 (0.85 DRILL)	0.025 - 0.050	--	--	--	0.9 - 1.5um	--	0.70 - 0.80
IMMERSON SILVER	0.81-0.86 (0.85 DRILL)	0.025 - 0.050	--	--	--	--	0.15 - 0.65um	0.70 - 0.80
COPPER (SEE NOTE 9)	0.81-0.86 (0.85 DRILL)	0.025 - 0.050	--	--	--	--	--	0.70 - 0.80
GOLD	0.81-0.86 (0.85 DRILL)	0.025 - 0.050	--	0.003 - 0.007	FLASH UP TO 0.0002	--	--	0.69 - 0.80

TOP LAYER DESCRIPTION	TABLE 2 (HPC SIGNALS) PLATED THROUGH-HOLE REQUIREMENTS							
	DRILLED HOLE DIAMETER	COPPER THICKNESS	TIN-LEAD THICKNESS	NICKEL THICKNESS	GOLD THICKNESS	TIN THICKNESS	SILVER THICKNESS	FINISHED HOLE DIAMETER
TIN-LEAD	1.125-1.175 (∅ .0453±.0010)	0.025-0.050	0.005-0.015	--	--	--	--	0.94 - 1.10 (∅ .040±.003)
IMMERSON TIN			--	--	--	--	--	
IMMERSON SILVER			--	--	--	--	--	
COPPER (SEE NOTE 9)			--	--	--	--	--	
GOLD			--	--	--	--	--	

	R/A HEADER ASSY 10DC-24S	Part No	10065864	Rev.	E
	HCl POWER CONNECTOR	Customer	CUSTOMER	Sheet 4 of 5	

PDM: Rev:E STATUS:Released 8 Printed: Dec 18, 2010

1 2 3 4 5 6

A

B

C

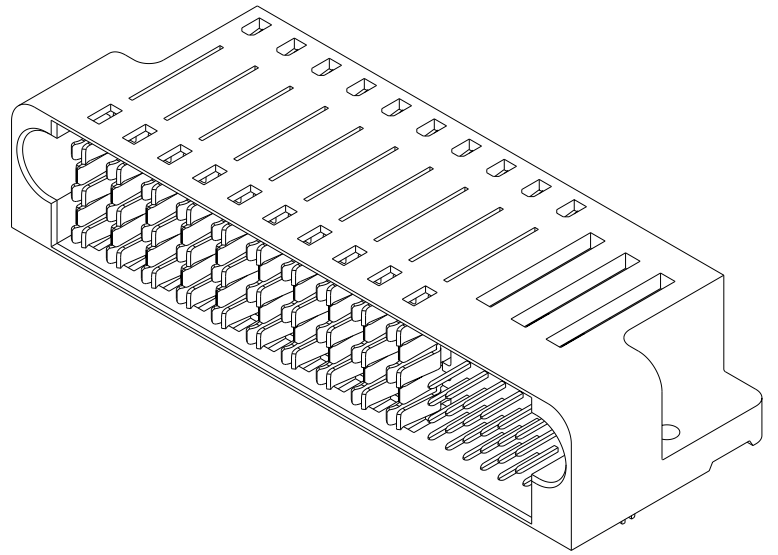
D

E

F

Copyright FCJ

PART NUMBER	RETENTION CLIPS	#4 SCREW	DIM A (TAIL LENGTH)	TAIL TYPE
10065864-001LF	NO	YES	3.43	SOLDER TAIL
10065864-002LF	NO	YES	4.70	SOLDER TAIL
10065864-003LF	YES	NO	3.43	SOLDER TAIL
10065864-004LF	YES	NO	4.70	SOLDER TAIL



NOTES:

1. CONNECTOR MATERIALS:
HOUSING: HIGH TEMPERATURE THERMOPLASTIC, BLACK
UL 94V-0 COMPLIANT
CONTACTS: HIGH PERFORMANCE COPPER ALLOY
2. CONTACT FINISH(REF. GS-12-380 SECTION 5.2)
3. PRODUCT SPECIFICATION: GS-12-380.
4. APPLICATION SPECIFICATION: GS-20-070.
5. PRODUCT MARKING (PRODUCT NUMBER & DATE CODE) ON HOUSING IN AREA SHOWN.
6. MINIMUM NOMINAL PCB THICKNESS: 1.6mm
7. PACKAGING MEETS FCI SPECIFICATION GS-14-1073.
8. HOUSING COMPONENT WILL WITHSTAND EXPOSURE TO 260°C PEAK TEMPERATURE FOR 60 SECONDS IN A CONVECTION, INFRA-RED, OR VAPOR PHASE REFLOW OVEN.
9. COPPER PLATING THICKNESS IN CENTER OF VIA-HOLE CAN BE NO MORE THAN 0.003 LESS THAN OTHER AREAS.
10. ALL HOLE SIZES ARE FINISHED HOLE SIZES.
11. MOUNTING HOLES ARE UNPLATED.

	R/A HEADER ASSY 10DC-24S	org no	10065864	Rev.
	FCI POWER CONNECTOR	CUSTOMER		E
catalog no			sheet 5 of 5	

PDM: Rev:E STATUS:Released 8 Printed: Dec 18, 2010