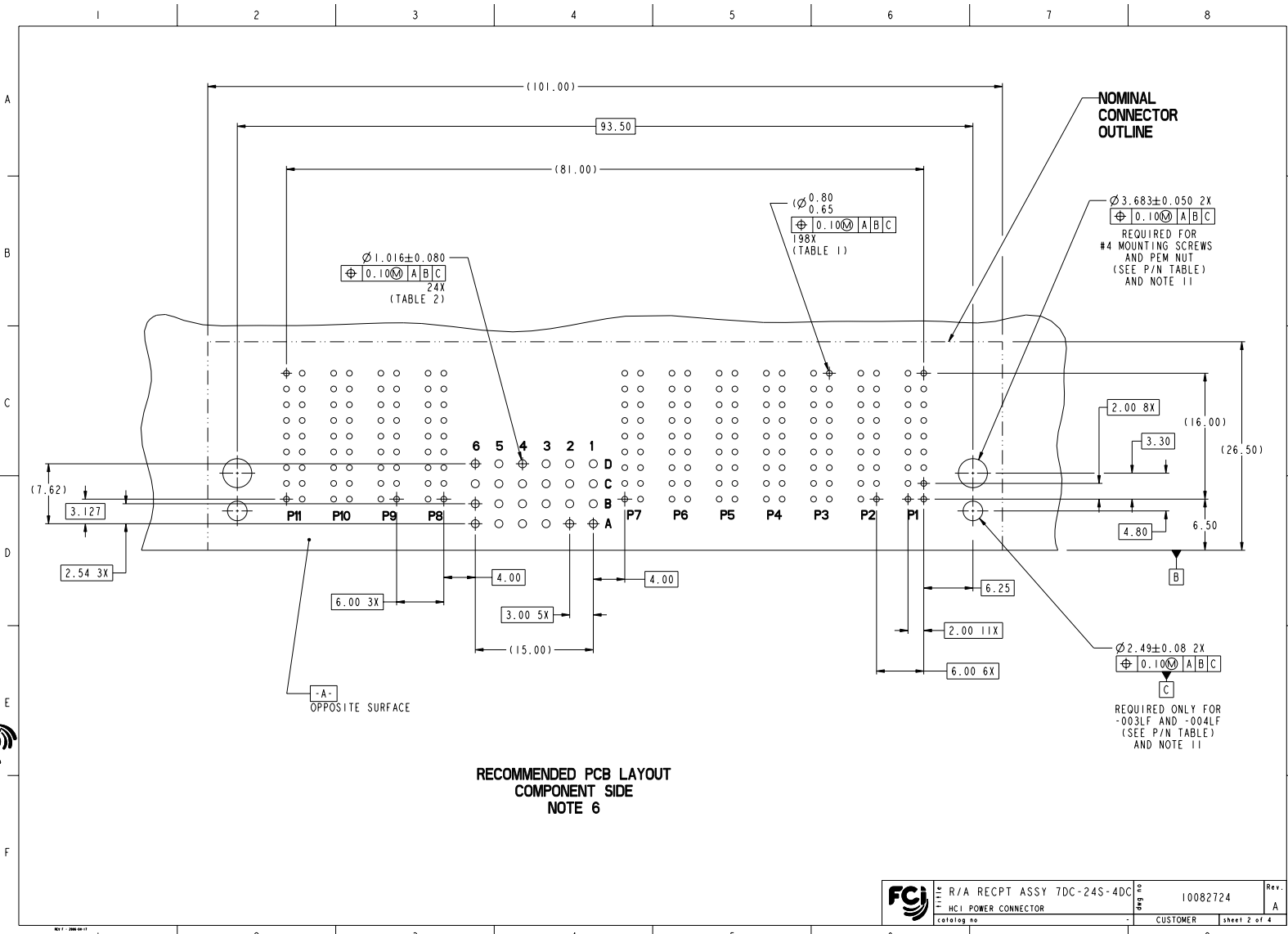


Copyright FCJ

www.fciconnect.com				surface	tolerance std	projection	MM	
				ASME Y14.5	ASME Y14.5	ASME Y14.5		
TOLERANCES UNLESS OTHERWISE SPECIFIED				ANGULAR	LINEAR	SIZE	Scale	
				0.X	±.3	A2	1:1	
				0.XXX	±.10	ECN	-	
				0.XXX	±.050	Spec ref	-	
rev	ecn no	dr	date	Product family				
A	Y08-0243	TH	2008-06-03	R/A RECPT ASSY 7DC-24S-4DC				Rev.
				FCJ HCl POWER CONNECTOR				10082724
				CUSTOMER				A
				catalog no				sheet 1 of 4



Copyright FCI

	R/A RECPT ASSY 7DC-24S-4DC	10082724	Rev. A
	HCI POWER CONNECTOR	CUSTOMER	Sheet 2 of 4
PDM: Rev:A		STATUS: Released 8 Printed: Dec 18, 2010	

1 2 3 4 5 6 7 8

A

B

C

D

E

F

A

B

C


D

E

F

TOP LAYER DESCRIPTION	TABLE 1 (HCl POWER) PLATED THROUGH-HOLE REQUIREMENTS							
	DRILLED HOLE DIAMETER	COPPER THICKNESS	TIN-LEAD THICKNESS	NICKEL THICKNESS	GOLD THICKNESS	TIN THICKNESS	SILVER THICKNESS	FINISHED HOLE DIAMETER
TIN-LEAD	0.81-0.86 (0.85 DRILL)	0.025 - 0.050	0.005 - 0.015	--	--	--	--	0.65 - 0.80
IMMERSON TIN	0.81-0.86 (0.85 DRILL)	0.025 - 0.050	--	--	--	0.9 - 1.5um	--	0.70 - 0.80
IMMERSON SILVER	0.81-0.86 (0.85 DRILL)	0.025 - 0.050	--	--	--	--	0.15 - 0.65um	0.70 - 0.80
COPPER (SEE NOTE 9)	0.81-0.86 (0.85 DRILL)	0.025 - 0.050	--	--	--	--	--	0.70 - 0.80
GOLD	0.81-0.86 (0.85 DRILL)	0.025 - 0.050	--	0.003 - 0.007	FLASH UP TO 0.0002	--	--	0.69 - 0.80

TOP LAYER DESCRIPTION	TABLE 2 (HPC SIGNALS) PLATED THROUGH-HOLE REQUIREMENTS							
	DRILLED HOLE DIAMETER	COPPER THICKNESS	TIN-LEAD THICKNESS	NICKEL THICKNESS	GOLD THICKNESS	TIN THICKNESS	SILVER THICKNESS	FINISHED HOLE DIAMETER
TIN-LEAD	1.125-1.175 (\varnothing .0453 \pm .0010)	0.025-0.050	0.005 - 0.015	--	--	--	--	0.94 - 1.10 (\varnothing .040 \pm .003)
IMMERSON TIN			--	--	--	--	--	
IMMERSON SILVER			--	--	--	--	--	
COPPER (SEE NOTE 9)			--	--	--	--	--	
GOLD			--	--	--	--	--	

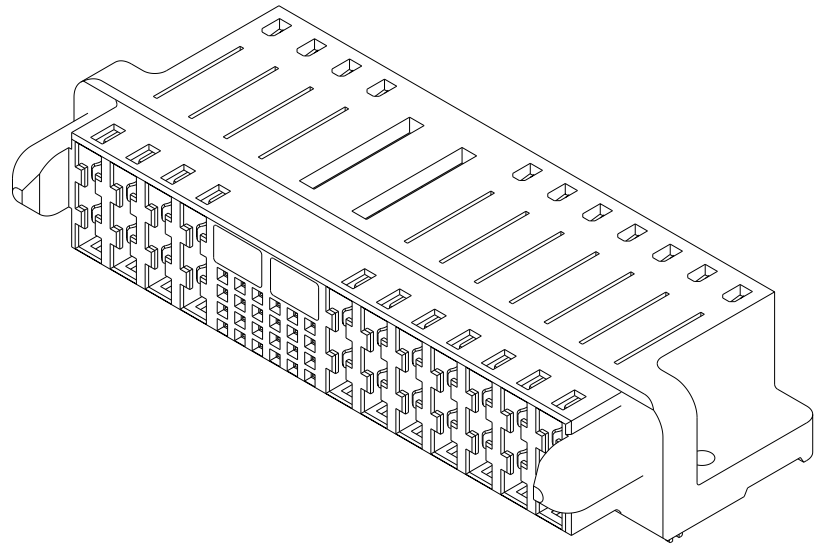
	R/A RECPT ASSY 7DC-24S-4DC	10082724	Rev. A
	HCl POWER CONNECTOR	CUSTOMER	Sheet 3 of 4

PDM: Rev:A STATUS:Released 8 Printed: Dec 18, 2010

1 2 3 4 5 6

Copyright FCJ

PART NUMBER	RETENTION CLIPS	#4 SCREW	DIM A (TAIL LENGHT)	TAIL TYPE
10082724-001LF	NO	YES	3.43	SOLDER TAIL
10082724-002LF	NO	YES	4.70	SOLDER TAIL
10082724-003LF	YES	NO	3.43	SOLDER TAIL
10082724-004LF	YES	NO	4.70	SOLDER TAIL



NOTES:

1. CONNECTOR MATERIALS:
 HOUSING: HIGH TEMPERATURE THERMOPLASTIC, BLACK
 UL 94V-0 COMPLIANT
 CONTACTS: HIGH PERFORMANCE COPPER ALLOY
2. CONTACT FINISH (ref GS-12-380 SECTION 5.2)
3. PRODUCT SPECIFICATION: GS-12-380.
4. APPLICATION SPECIFICATION: GS-20-070.
5. PRODUCT MARKING (PRODUCT NUMBER & DATE CODE) ON HOUSING IN AREA SHOWN.
6. MINIMUM NOMINAL PCB THICKNESS: 1.6mm
7. PACKAGING MEETS FCI SPECIFICATION GS-14-1073.
8. HOUSING COMPONENT WILL WITHSTAND EXPOSURE TO 260°C PEAK TEMPERATURE FOR 60 SECONDS IN A CONVECTION, INFRA-RED, OR VAPOR PHASE REFLOW OVEN.
9. COPPER PLATING THICKNESS IN CENTER OF VIA-HOLE CAN BE NO MORE THAN 0.003 LESS THAN OTHER AREAS.
10. ALL HOLE SIZES ARE FINISHED HOLE SIZES.
11. MOUNTING HOLES ARE UNPLATED.

Copyright FCI.

	R/A RECPT ASSY 7DC-24S-4DC	10082724	Rev.
	FCI POWER CONNECTOR	CUSTOMER	A
<small>drawing no</small>	<small>PDM: Rev:A</small>	<small>STATUS: Released</small>	<small>sheet 4 of 4</small>