

Copyright FCJ

www.fciconnect.com		surface	tolerance std	projection	MM
		ASME Y14.5	ASME Y14.5	ASME Y14.5	
TOLERANCES UNLESS OTHERWISE SPECIFIED					
Dr	T. HOUTZ	2007-09-27	ANGULAR	0.X	±.3
Eng	H. NGO	2007-09-27	LINEAR	0.XX	±.10
Chr	H. NGO	2007-09-27	0" ±2"	0.XXX	±.050
Appr	H. NGO	2007-09-27	Product family	HCI	Spec ref
FCJ		R/A HDR ASSY 7DC-24S-4DC		10082722	Rev. A
FCJ		HCI POWER CONNECTOR		CUSTOMER	sheet 1 of 5
catalog no		7 PDM: Rev:A		STATUS: Released 8 Printed: Dec 18, 2010	

1 2 3 4 5 6 7 8

A

B

C

D

E

F

A

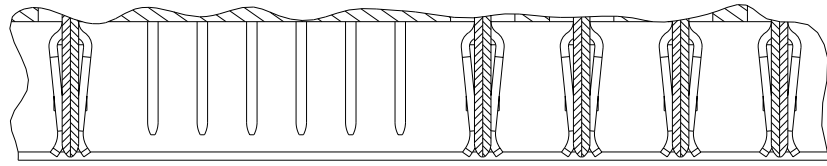
B

C

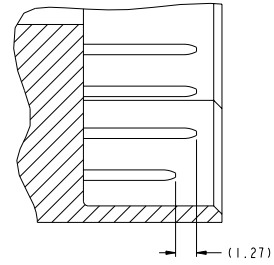
D

E

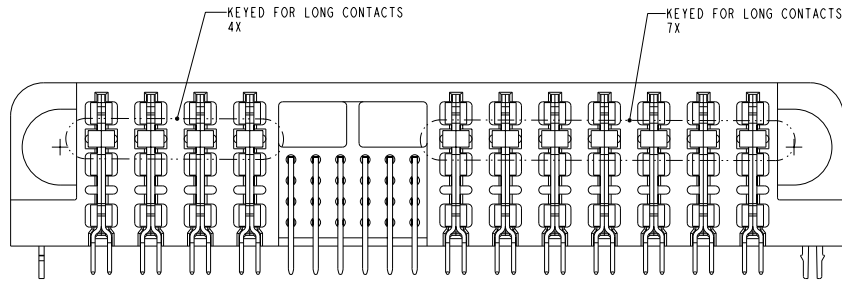
F



DETAIL C
SCALE 6:1
 POWER MATING
 SEQUENCE



SECTION W-W
SCALE 6:1
 SIGNAL MATING
 SEQUENCE



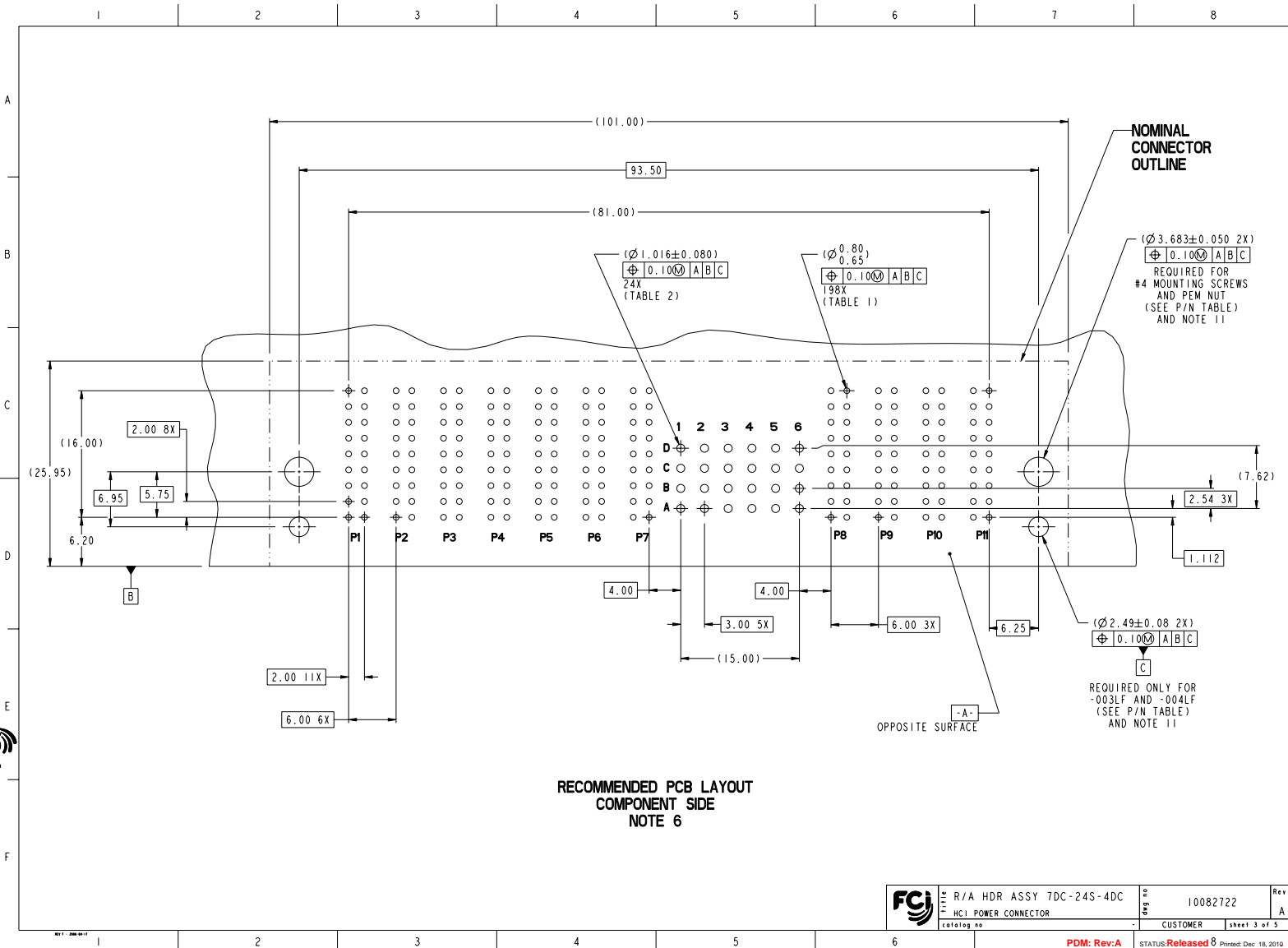
VIEW G-G

Copyright FCJ
 FCJ

	R/A HDR ASSY 7DC-24S-4DC	org no	10082722	Rev.
	HCI POWER CONNECTOR	customer		A
catalog no				sheet 2 of 5

PDM: Rev:A STATUS: Released 8 Printed: Dec 18, 2010

1 2 3 4 5 6



**RECOMMENDED PCB LAYOUT
COMPONENT SIDE
NOTE 6**

	R/A HDR ASSY 7DC-24S-4DC	Part No.	10082722	Rev.	A
	HCI POWER CONNECTOR	Customer		Sheet	3 of 5

1 2 3 4 5 6 7 8

A

B

C

D

E

F

A

B

C


D

E

F

TOP LAYER DESCRIPTION	TABLE 1 (HCl POWER) PLATED THROUGH-HOLE REQUIREMENTS							
	DRILLED HOLE DIAMETER	COPPER THICKNESS	TIN-LEAD THICKNESS	NICKEL THICKNESS	GOLD THICKNESS	TIN THICKNESS	SILVER THICKNESS	FINISHED HOLE DIAMETER
TIN-LEAD	0.81-0.86 (0.85 DRILL)	0.025 - 0.050	0.005 - 0.015	--	--	--	--	0.65 - 0.80
IMMERSON TIN	0.81-0.86 (0.85 DRILL)	0.025 - 0.050	--	--	--	0.9 - 1.5um	--	0.70 - 0.80
IMMERSON SILVER	0.81-0.86 (0.85 DRILL)	0.025 - 0.050	--	--	--	--	0.15 - 0.65um	0.70 - 0.80
COPPER (SEE NOTE 9)	0.81-0.86 (0.85 DRILL)	0.025 - 0.050	--	--	--	--	--	0.70 - 0.80
GOLD	0.81-0.86 (0.85 DRILL)	0.025 - 0.050	--	0.003 - 0.007	FLASH UP TO 0.0002	--	--	0.69 - 0.80

TOP LAYER DESCRIPTION	TABLE 2 (HPC SIGNALS) PLATED THROUGH-HOLE REQUIREMENTS							
	DRILLED HOLE DIAMETER	COPPER THICKNESS	TIN-LEAD THICKNESS	NICKEL THICKNESS	GOLD THICKNESS	TIN THICKNESS	SILVER THICKNESS	FINISHED HOLE DIAMETER
TIN-LEAD	1.125-1.175 (\varnothing .0453 \pm .0010)	0.025-0.050	0.005-0.015	--	--	--	--	0.94 - 1.10 (\varnothing .040 \pm .003)
IMMERSON TIN			--	--	--	--	--	
IMMERSON SILVER			--	--	--	--	--	
COPPER (SEE NOTE 9)			--	--	--	--	--	
GOLD			--			--	--	

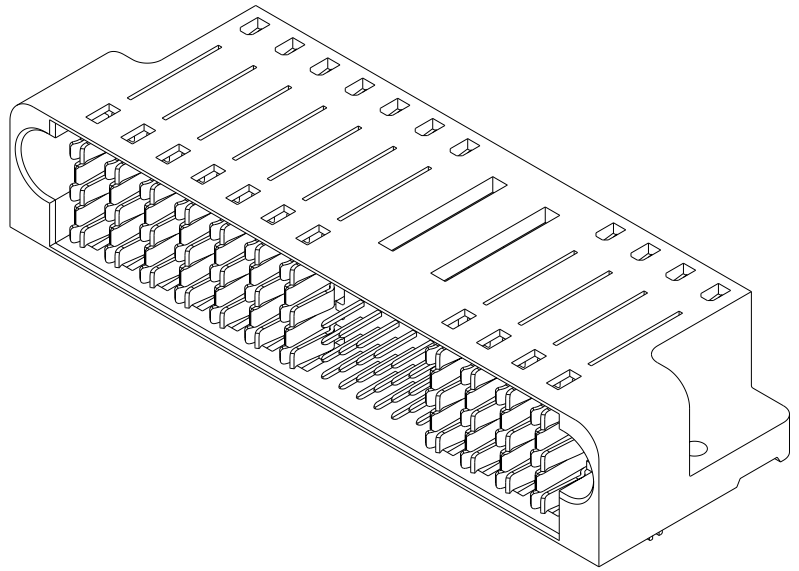
	R/A HDR ASSY 7DC-24S-4DC	Part No	10082722	Rev.	A
	HCl POWER CONNECTOR	customer			

PDM: Rev:A STATUS:Released 8 Printed: Dec 18, 2010

1 2 3 4 5 6 7 8

Copyright FCJ

PART NUMBER	RETENTION CLIPS	#4 SCREW	DIM A (TAIL LENGTH)	TAIL TYPE
10082722-001LF	NO	YES	3.43	SOLDER TAIL
10082722-002LF	NO	YES	4.70	SOLDER TAIL
10082722-003LF	YES	NO	3.43	SOLDER TAIL
10082722-004LF	YES	NO	4.70	SOLDER TAIL



NOTES:

1. CONNECTOR MATERIALS:
HOUSING: HIGH TEMPERATURE THERMOPLASTIC, BLACK
UL 94V-0 COMPLIANT
CONTACTS: HIGH PERFORMANCE COPPER ALLOY
2. CONTACT FINISH (ref GS-12-380 SECTION 5.2)
3. PRODUCT SPECIFICATION: GS-12-380.
4. APPLICATION SPECIFICATION: GS-20-070.
5. PRODUCT MARKING (PRODUCT NUMBER & DATE CODE) ON HOUSING IN AREA SHOWN.
6. MINIMUM NOMINAL PCB THICKNESS: 1.6mm
7. PACKAGING MEETS FCI SPECIFICATION GS-14-1073.
8. HOUSING COMPONENT WILL WITHSTAND EXPOSURE TO 260°C PEAK TEMPERATURE FOR 60 SECONDS IN A CONVECTION, INFRA-RED, OR VAPOR PHASE REFLOW OVEN.
9. COPPER PLATING THICKNESS IN CENTER OF VIA-HOLE CAN BE NO MORE THAN 0.003 LESS THAN OTHER AREAS.
10. ALL HOLE SIZES ARE FINISHED HOLE SIZES.
11. MOUNTING HOLES ARE UNPLATED.

FCI	R/A HDR ASSY 7DC-24S-4DC	org no	10082722	Rev.	A
	FCI POWER CONNECTOR	customer		sheet	5 of 5

PDM: Rev:A STATUS: Released 8 Printed: Dec 18, 2010