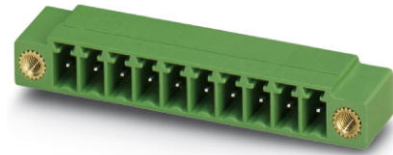


## MC 1,5/14-GF-3,81


Order No.: 1827981

The figure shows a 10-position version of the product



<http://eshop.phoenixcontact.de/phoenix/treeViewClick.do?UID=1827981>

Header, Nominal current: 8 A, Rated voltage (III/2): 160 V, Number of positions: 14, Pitch: 3.81 mm, Color: green, Assembly: Soldering

| Commercial data          |  |
|--------------------------|--|
| GTIN (EAN)               | <br>4 017918 050436 |
| Note                     | Made-to-order  |
| sales group              | E100   |
| Pack                     | 50 pcs.  |
| Customs tariff           | 85366990   |
| Catalog page information | Page 213 (CC-2011)   |

### Product notes

WEEE/RoHS-compliant since:  
01/01/2003



<http://www.download.phoenixcontact.com>  
Please note that the data given here has been taken from the online catalog. For comprehensive information and data, please refer to the user documentation. The General Terms and Conditions of Use apply to Internet downloads.

## Technical data

| Dimensions / positions |              |
|------------------------|--------------|
| Length                 | 9.2 mm       |
| Pitch                  | 3.81 mm      |
| Dimension a            | 49.53 mm     |
| Number of positions    | 14           |
| Pin dimensions         | 0,8 x 0,8 mm |

|                                     |               |
|-------------------------------------|---------------|
| Hole diameter                       | 1.2 mm        |
| <b>Technical data</b>               |               |
| Range of articles                   | MC 1,5/...-GF |
| Insulating material group           | IIIa          |
| Rated surge voltage (III/3)         | 2.5 kV        |
| Rated surge voltage (III/2)         | 2.5 kV        |
| Rated surge voltage (II/2)          | 2.5 kV        |
| Rated voltage (III/2)               | 160 V         |
| Rated voltage (II/2)                | 250 V         |
| Connection in acc. with standard    | EN-VDE        |
| Nominal current $I_N$               | 8 A           |
| Nominal voltage $U_N$               | 160 V         |
| Maximum load current                | 8 A           |
| Insulating material                 | PBT           |
| Inflammability class acc. to UL 94  | V0            |
| Color                               | Green         |
| Nominal voltage, UL/CUL Use Group B | 300 V         |
| Nominal current, UL/CUL Use Group B | 8 A           |
| Nominal voltage, UL/CUL Use Group D | 300 V         |
| Nominal current, UL/CUL Use Group D | 8 A           |

#### Certificates / Approvals



Certification

CB, CSA, CUL, GOST, UL, VDE-PZI

#### Accessories

| Item           | Designation            | Description  |
|----------------|------------------------|--|
| <b>General</b> |                        |  |
| 1841174        | MC 1,5/10-LWL 1,5-3,81 | Fiber optics, Pitch: 3.81 mm, Number of positions: 10, Dimension a: 1.5 mm, Color: transparent |

|         |                        |  |
|---------|------------------------|--|
| 1841190 | MC 1,5/10-LWL 2,3-3,81 | Fiber optics, Pitch: 3.81 mm, Number of positions: 10, Dimension a: 2.3 mm, Color: transparent |
| 1841213 | MC 1,5/10-LWL 4-3,81   | Fiber optics, Pitch: 3.81 mm, Number of positions: 10, Dimension a: 4 mm, Color: transparent   |

#### Marking

|         |                          |  |
|---------|--------------------------|--|
| 0804109 | SK 3,81/2,8:FORTL.ZAHLEN | Marker card, printed horizontally, self-adhesive, 10-section marker strip, 14 identical decades marked 1-10, 11-20 etc. up to 91-(99)100, sufficient for 140 terminal blocks |
|---------|--------------------------|--|

#### Plug/Adapter

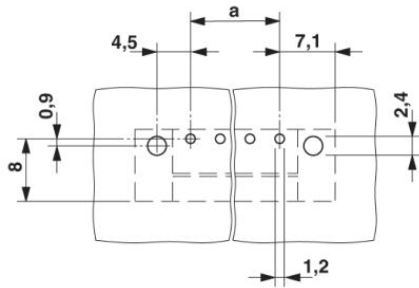
|         |         |   |
|---------|---------|---|
| 1734634 | CP-MSTB | Keying profile, is inserted into the slot on the plug or inverted header, red insulating material |
|---------|---------|---|

#### Additional products

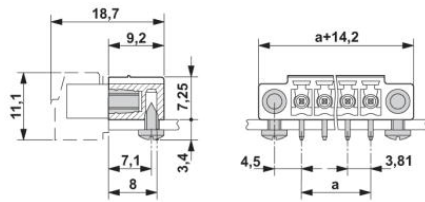
| Item           | Designation              | Description   |
|----------------|--------------------------|---|
| <b>General</b> |                          |   |
| 1851355        | FK-MCP 1,5/14-STF-3,81   | Plug component, Nominal current: 8 A, Rated voltage (III/2): 160 V, Number of positions: 14, Pitch: 3.81 mm, Connection method: Spring-cage conn., Color: green   |
| 1850974        | FRONT-MC 1,5/14-STF-3,81 | Plug component, Nominal current: 8 A, Rated voltage (III/2): 160 V, Number of positions: 14, Pitch: 3.81 mm, Connection method: Screw connection, Color: green  |
| 1827826        | MC 1,5/14-STF-3,81       | Plug component, Nominal current: 8 A, Rated voltage (III/2): 160 V, Number of positions: 14, Pitch: 3.81 mm, Connection method: Screw connection, Color: green  |
| 1852480        | MCC 1/14-STZF-3,81       | Plug component, Nominal current: 8 A, Rated voltage (III/2): 160 V, Number of positions: 14, Pitch: 3.81 mm, Connection method: Crimp connection, Color: green, Corresponding female crimp contacts with current [A] and conductor cross section range [mm <sup>2</sup> ] data: 5A/MCC-MT 0,2-0,35 (1859988); 8A/MCC-MT 0,5-1,0 (1859991) |
| 1828469        | MCVR 1,5/14-STF-3,81     | Plug component, Nominal current: 8 A, Rated voltage (III/2): 160 V, Number of positions: 14, Pitch: 3.81 mm, Connection method: Screw connection, Color: green  |
| 1828618        | MCVW 1,5/14-STF-3,81     | Plug component, Nominal current: 8 A, Rated voltage (III/2): 160 V, Number of positions: 14, Pitch: 3.81 mm, Connection method: Screw connection, Color: green  |
| 1897665        | QC 0,5/14-STF-3,81       | Plug component, Nominal current: 6 A, Rated voltage (III/2): 200 V, Number of positions: 14, Pitch: 3.81 mm, Connection method: Insulation displacement connection QUICKON, Color: green  |

## Diagrams/Drawings

### Drilling plan/solder pad geometry



### Dimensioned drawing



**Address**

PHOENIX CONTACT Inc., USA  
586 Fulling Mill Road  
Middletown, PA 17057, USA  
Phone (800) 888-7388  
Fax (717) 944-1625  
<http://www.phoenixcon.com>



© 2011 Phoenix Contact  
Technical modifications reserved;