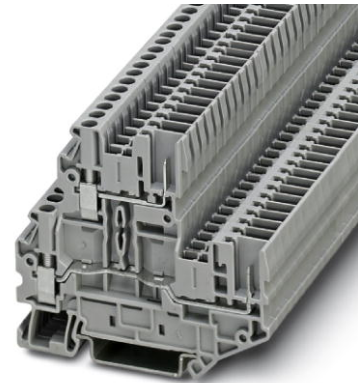



UTT 2,5/2P

Order No.: 3060351

<http://eshop.phoenixcontact.de/phoenix/treeViewClick.do?UID=3060351>

Terminal block, Cross section: 0.14 mm² - 4 mm², AWG: 26 - 12,
Connection type: Screw connection, Width: 5.2 mm, Color: gray,
Mounting type: NS 35/7.5, NS 35/15

Commercial data

| | |
|--------------------------|--|
| GTIN (EAN) |  |
| sales group | A870 |
| Pack | 50 pcs. |
| Customs tariff | 85369010 |
| Catalog page information | Page 290 (CL1-2011) |

Product notes

WEEE/RoHS-compliant since:
03/24/2006



<http://www.download.phoenixcontact.com>
Please note that the data given here has been taken from the online catalog. For comprehensive information and data, please refer to the user documentation. The General Terms and Conditions of Use apply to Internet downloads.

Technical data**General**

| | |
|-----------------------|------|
| Number of levels | 2 |
| Number of connections | 4 |
| Color | gray |
| Insulating material | PA |

| | |
|------------------------------------|----|
| Inflammability class acc. to UL 94 | V0 |
|------------------------------------|----|

Dimensions

| | |
|------------------|---------|
| Width | 5.2 mm |
| Length | 74.3 mm |
| Height NS 35/7.5 | 65 mm |
| Height NS 35/15 | 72.5 mm |

Technical data

| | |
|----------------------------------|---|
| Maximum load current | 22 A (with 4 mm ² conductor cross section) |
| Rated surge voltage | 6 kV |
| Pollution degree | 3 |
| Surge voltage category | III |
| Insulating material group | I |
| Connection in acc. with standard | IEC 61984 |
| Nominal current I _N | 24 A |
| Nominal voltage U _N | 500 V |
| Open side panel | ja |

Connection data

| | |
|--|----------------------|
| Conductor cross section solid min. | 0.14 mm ² |
| Conductor cross section solid max. | 4 mm ² |
| Conductor cross section stranded min. | 0.14 mm ² |
| Conductor cross section stranded max. | 4 mm ² |
| Conductor cross section AWG/kcmil min. | 26 |
| Conductor cross section AWG/kcmil max | 12 |
| Conductor cross section stranded, with ferrule without plastic sleeve min. | 0.14 mm ² |
| Conductor cross section stranded, with ferrule without plastic sleeve max. | 2.5 mm ² |
| Conductor cross section stranded, with ferrule with plastic sleeve min. | 0.14 mm ² |
| Conductor cross section stranded, with ferrule with plastic sleeve max. | 2.5 mm ² |
| 2 conductors with same cross section, solid min. | 0.14 mm ² |
| 2 conductors with same cross section, solid max. | 1.5 mm ² |
| 2 conductors with same cross section, stranded min. | 0.14 mm ² |

| | |
|---|----------------------|
| 2 conductors with same cross section, stranded max. | 1.5 mm ² |
| 2 conductors with same cross section, stranded, TWIN ferrules with plastic sleeve, min. | 0.5 mm ² |
| 2 conductors with same cross section, stranded, TWIN ferrules with plastic sleeve, max. | 1.5 mm ² |
| 2 conductors with same cross section, stranded, ferrules without plastic sleeve, min. | 0.14 mm ² |
| 2 conductors with same cross section, stranded, ferrules without plastic sleeve, max. | 1.5 mm ² |
| Connection method | Screw connection |
| Stripping length | 9 mm |
| Internal cylindrical gage | A3 |
| Screw thread | M3 |
| Tightening torque, min | 0.5 Nm |
| Tightening torque max | 0.6 Nm |

Certificates / Approvals



Certification

UL

Accessories

| Item | Designation | Description |
|-----------------|-----------------------------|--|
| Assembly | | |
| 3047316 | ATP-UTTB 2,5/4 | Partition plate, Length: 74.3 mm, Width: 2.2 mm, Height: 70 mm, Color: gray |
| 3022276 | CLIPFIX 35-5 | Snap-on end bracket, for NS 35/7.5 or NS 35/15 DIN rail, can be fitted with Zack strip ZB 5 and ZBF 5, terminal strip marker KLM 2 and KLM, parking facility for FBS...5, FBS...6, KSS 5, KSS 6, width: 5,15 mm, color: gray |
| 3060393 | D-UTTB 2,5/4 2P | Cover, Length: 74.3 mm, Width: 2.2 mm, Height: 66 mm, Color: gray |
| 0801762 | NS 35/ 7,5 CU UNPERF 2000MM | DIN rail, material: Copper, unperforated, height 7.5 mm, width 35 mm, length: 2 m |
| 1207640 | NS 35/ 7,5 PERF 755MM | NS 35 DIN rail, height 7.5 mm, length 755 mm |

| | | |
|---------|----------------------------|--|
| 1207653 | NS 35/ 7,5 PERF 955MM | NS35 DIN rail, height 7.5 mm, length 955 mm |
| 1207666 | NS 35/ 7,5 PERF 1155MM | NS 35 DIN rail, height 7.5 mm, length 1155 mm |
| 0801733 | NS 35/ 7,5 PERF 2000MM | DIN rail, material: Steel, galvanized and passivated with a thick layer, perforated, height 7.5 mm, width 35 mm, length: 2 m |
| 0801681 | NS 35/ 7,5 UNPERF 2000MM | DIN rail, material: Steel, unperforated, height 7.5 mm, width 35 mm, length: 2 m |
| 1201756 | NS 35/15 AL UNPERF 2000MM | DIN rail, deep-drawn, high profile, unperforated, 1.5 mm thick, material: Aluminum, height 15 mm, width 35 mm, length 2 m |
| 1201895 | NS 35/15 CU UNPERF 2000MM | DIN rail, material: Copper, unperforated, 1.5 mm thick, height 15 mm, width 35 mm, length: 2 m |
| 1207679 | NS 35/15 PERF 755MM | NS 35 DIN rail, perforated, height 15 mm, length 755 mm |
| 1207682 | NS 35/15 PERF 955MM | NS 35 DIN rail, perforated, height 15 mm, length 955 mm |
| 1207695 | NS 35/15 PERF 1155MM | NS 35 DIN rail, perforated, height 15 mm, length 1155 mm |
| 1201730 | NS 35/15 PERF 2000MM | DIN rail, material: Steel, perforated, height 15 mm, width 35 mm, length: 2 m |
| 1201714 | NS 35/15 UNPERF 2000MM | DIN rail, material: Steel, unperforated, height 15 mm, width 35 mm, length: 2 m |
| 1201798 | NS 35/15-2,3 UNPERF 2000MM | DIN rail, material: Steel, unperforated, 2.3 mm thick, height 15 mm, width 35 mm, length: 2 m |

Bridges

| | | |
|---------|----------|---|
| 3030161 | FBS 2-5 | Plug-in bridge, Number of positions: 2, Color: red |
| 3030174 | FBS 3-5 | Plug-in bridge, Number of positions: 3, Color: red |
| 3030187 | FBS 4-5 | Plug-in bridge, Number of positions: 4, Color: red |
| 3030190 | FBS 5-5 | Plug-in bridge, Number of positions: 5, Color: red |
| 3030213 | FBS 10-5 | Plug-in bridge, Number of positions: 10, Color: red |
| 3030226 | FBS 20-5 | Plug-in bridge, Number of positions: 20, Color: red |
| 3038930 | FBS 50-5 | Plug-in bridge, Number of positions: 50, Color: red |

General

| | | |
|---------|---------------|---|
| 3047303 | DP-UTTB 2,5/4 | Spacer plate, Length: 69.9 mm, Width: 2.6 mm, Height: 33 mm, Color: gray |
| 3047358 | FBS-PV UT | Vertical potential bridge, to connect the upper and lower level |
| 3060474 | UTTB 2,5/2P-F | Screw flange, for screwing COMBI plugs, with the same structure and pitch as the relevant COMBI terminal blocks |

Marking

| | | |
|---------|------------|---|
| 3040588 | PC | Keying star, Length: 3 mm, Width: 3 mm, Height: 6 mm, Color: red |
| 0811228 | X-PEN 0,35 | Marker pen without ink cartridge, for manual labeling of markers, labeling extremely wipe-proof, line thickness 0.35 mm |

| | | |
|---------|------------------------|--|
| 1050004 | ZB 5 :UNBEDRUCKT | Zack strip, unprinted, 10-section, for individual labeling with M-PEN, ZB-T or CMS system, pack is sufficient for 100 terminal blocks, for a terminal width of 5.2 mm, color: White |
| 5060906 | ZB 5/WH-100:UNBEDRUCKT | Zack strip, unprinted: 10-section, for individual labeling with M-PEN, ZB-T or CMS system, large batch, sufficient for labeling 1000 terminal blocks, for a terminal width of 5.2 mm, color: White |
| 1050295 | ZB 5:SO/CMS | Zack strip, 10-section, divisible, special printing, marking according to customer requirements |

Plug/Adapter

| | | |
|---------|-----------|---------------------------------|
| 0201689 | MPS-IH BU | Insulating sleeve, Color: blue |
| 0201676 | MPS-IH RD | Insulating sleeve, Color: red |
| 0201663 | MPS-IH WH | Insulating sleeve, Color: white |
| 0201744 | MPS-MT | Test plugs |
| 3030925 | PAI-4 | Test adapter, Color: gray |
| 3030983 | PS-5 | Test adapter, Color: red |

Tools

| | | |
|---------|-------------|--|
| 1205053 | SZS 0,6X3,5 | Actuation tool, for ST terminal blocks, insulated, also suitable for use as a bladed screwdriver, size: 0.6 x 3.5 x 100 mm, 2-component grip, with non-slip grip |
|---------|-------------|--|

Additional products

| Item | Designation | Description |
|---------------------|----------------|---|
| Plug/Adapter | | |
| 3040258 | SP 2,5/ 1 | Connectors, Connection method: Spring-cage connection, Number of positions: 1, Cross section: 0.08 mm ² - 4 mm ² , AWG 28 - 12, Width: 5.2 mm, Height: 39 mm, Color: gray |
| 3040698 | SP 2,5/ 1 BU | Connectors, Connection method: Spring-cage connection, Number of positions: 1, Cross section: 0.08 mm ² - 4 mm ² , AWG 28 - 12, Width: 5.2 mm, Height: 39 mm, Color: blue |
| 3040708 | SP 2,5/ 1 GNYE | Connectors, Connection method: Spring-cage connection, Number of positions: 1, Cross section: 0.08 mm ² - 4 mm ² , AWG 28 - 12, Width: 5.2 mm, Height: 39 mm, Color: green-yellow |
| 3040261 | SP 2,5/ 2 | Connectors, Connection method: Spring-cage connection, Number of positions: 2, Cross section: 0.08 mm ² - 4 mm ² , AWG 28 - 12, Width: 10.4 mm, Height: 39 mm, Color: gray |
| 3040274 | SP 2,5/ 3 | Connectors, Connection method: Spring-cage connection, Number of positions: 3, Cross section: 0.08 mm ² - 4 mm ² , AWG 28 - 12, Width: 15.6 mm, Height: 39 mm, Color: gray |
| 3040287 | SP 2,5/ 4 | Connectors, Connection method: Spring-cage connection, Number of positions: 4, Cross section: 0.08 mm ² - 4 mm ² , AWG 28 - 12, Width: 20.8 mm, Height: 39 mm, Color: gray |

| | | |
|---------|-----------------|---|
| 3040290 | SP 2,5/ 5 | Connectors, Connection method: Spring-cage connection, Number of positions: 5, Cross section: 0.08 mm ² - 4 mm ² , AWG 28 - 12, Width: 26 mm, Height: 39 mm, Color: gray |
| 3040300 | SP 2,5/ 6 | Connectors, Connection method: Spring-cage connection, Number of positions: 6, Cross section: 0.08 mm ² - 4 mm ² , AWG 28 - 12, Width: 31.2 mm, Height: 39 mm, Color: gray |
| 3040313 | SP 2,5/ 7 | Connectors, Connection method: Spring-cage connection, Number of positions: 7, Cross section: 0.08 mm ² - 4 mm ² , AWG 28 - 12, Width: 36.4 mm, Height: 39 mm, Color: gray |
| 3040326 | SP 2,5/ 8 | Connectors, Connection method: Spring-cage connection, Number of positions: 8, Cross section: 0.08 mm ² - 4 mm ² , AWG 28 - 12, Width: 41.6 mm, Height: 39 mm, Color: gray |
| 3040339 | SP 2,5/ 9 | Connectors, Connection method: Spring-cage connection, Number of positions: 9, Cross section: 0.08 mm ² - 4 mm ² , AWG 28 - 12, Width: 46.8 mm, Height: 39 mm, Color: gray |
| 3040342 | SP 2,5/10 | Connectors, Connection method: Spring-cage connection, Number of positions: 10, Cross section: 0.08 mm ² - 4 mm ² , AWG 28 - 12, Width: 52 mm, Height: 39 mm, Color: gray |
| 3040355 | SP 2,5/11 | Connectors, Connection method: Spring-cage connection, Number of positions: 11, Cross section: 0.08 mm ² - 4 mm ² , AWG 28 - 12, Width: 57.2 mm, Height: 39 mm, Color: gray |
| 3040368 | SP 2,5/12 | Connectors, Connection method: Spring-cage connection, Number of positions: 12, Cross section: 0.08 mm ² - 4 mm ² , AWG 28 - 12, Width: 62.4 mm, Height: 39 mm, Color: gray |
| 3040371 | SP 2,5/13 | Connectors, Connection method: Spring-cage connection, Number of positions: 13, Cross section: 0.08 mm ² - 4 mm ² , AWG 28 - 12, Width: 67.6 mm, Height: 39 mm, Color: gray |
| 3040384 | SP 2,5/14 | Connectors, Connection method: Spring-cage connection, Number of positions: 14, Cross section: 0.08 mm ² - 4 mm ² , AWG 28 - 12, Width: 72.8 mm, Height: 39 mm, Color: gray |
| 3040397 | SP 2,5/15 | Connectors, Connection method: Spring-cage connection, Number of positions: 15, Cross section: 0.08 mm ² - 4 mm ² , AWG 28 - 12, Width: 78 mm, Height: 39 mm, Color: gray |
| 3040106 | SPB 2,5/ 1 | Connectors, Connection method: Spring-cage connection, Number of positions: 1, Cross section: 0.08 mm ² - 4 mm ² , AWG 28 - 12, Width: 5.2 mm, Height: 39 mm, Color: gray |
| 3040724 | SPB 2,5/ 1 BU | Connectors, Connection method: Spring-cage connection, Number of positions: 1, Cross section: 0.08 mm ² - 4 mm ² , AWG 28 - 12, Width: 5.2 mm, Height: 39 mm, Color: blue |
| 3040711 | SPB 2,5/ 1 GNYE | Connectors, Connection method: Spring-cage connection, Number of positions: 1, Cross section: 0.08 mm ² - 4 mm ² , AWG 28 - 12, Width: 5.2 mm, Height: 39 mm, Color: green-yellow |
| 3040119 | SPB 2,5/ 2 | Connectors, Connection method: Spring-cage connection, Number of positions: 2, Cross section: 0.08 mm ² - 4 mm ² , AWG 28 - 12, Width: 10.4 mm, Height: 39 mm, Color: gray |
| 3040122 | SPB 2,5/ 3 | Connectors, Connection method: Spring-cage connection, Number of positions: 3, Cross section: 0.08 mm ² - 4 mm ² , AWG 28 - 12, Width: 15.6 mm, Height: 39 mm, Color: gray |

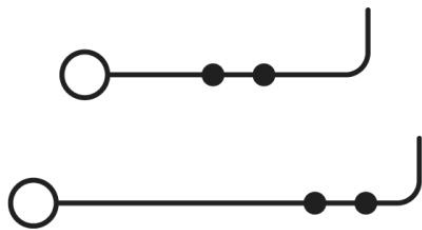
| | | |
|---------|------------------|---|
| 3040135 | SPB 2,5/ 4 | Connectors, Connection method: Spring-cage connection, Number of positions: 4, Cross section: 0.08 mm ² - 4 mm ² , AWG 28 - 12, Width: 20.8 mm, Height: 39 mm, Color: gray |
| 3040143 | SPB 2,5/ 5 | Connectors, Connection method: Spring-cage connection, Number of positions: 5, Cross section: 0.08 mm ² - 4 mm ² , AWG 28 - 12, Width: 26 mm, Height: 39 mm, Color: gray |
| 3040151 | SPB 2,5/ 6 | Connectors, Connection method: Spring-cage connection, Number of positions: 6, Cross section: 0.08 mm ² - 4 mm ² , AWG 28 - 12, Width: 31.2 mm, Height: 39 mm, Color: gray |
| 3040164 | SPB 2,5/ 7 | Connectors, Connection method: Spring-cage connection, Number of positions: 7, Cross section: 0.08 mm ² - 4 mm ² , AWG 28 - 12, Width: 36.4 mm, Height: 39 mm, Color: gray |
| 3040177 | SPB 2,5/ 8 | Connectors, Connection method: Spring-cage connection, Number of positions: 8, Cross section: 0.08 mm ² - 4 mm ² , AWG 28 - 12, Width: 41.6 mm, Height: 39 mm, Color: gray |
| 3040180 | SPB 2,5/ 9 | Connectors, Connection method: Spring-cage connection, Number of positions: 9, Cross section: 0.08 mm ² - 4 mm ² , AWG 28 - 12, Width: 46.8 mm, Height: 39 mm, Color: gray |
| 3040193 | SPB 2,5/10 | Connectors, Connection method: Spring-cage connection, Number of positions: 10, Cross section: 0.08 mm ² - 4 mm ² , AWG 28 - 12, Width: 52 mm, Height: 39 mm, Color: gray |
| 3040203 | SPB 2,5/11 | Connectors, Connection method: Spring-cage connection, Number of positions: 11, Cross section: 0.08 mm ² - 4 mm ² , AWG 28 - 12, Width: 57.2 mm, Height: 39 mm, Color: gray |
| 3040216 | SPB 2,5/12 | Connectors, Connection method: Spring-cage connection, Number of positions: 12, Cross section: 0.08 mm ² - 4 mm ² , AWG 28 - 12, Width: 62.4 mm, Height: 39 mm, Color: gray |
| 3040229 | SPB 2,5/13 | Connectors, Connection method: Spring-cage connection, Number of positions: 13, Cross section: 0.08 mm ² - 4 mm ² , AWG 28 - 12, Width: 67.6 mm, Height: 39 mm, Color: gray |
| 3040232 | SPB 2,5/14 | Connectors, Connection method: Spring-cage connection, Number of positions: 14, Cross section: 0.08 mm ² - 4 mm ² , AWG 28 - 12, Width: 72.8 mm, Height: 39 mm, Color: gray |
| 3040245 | SPB 2,5/15 | Connectors, Connection method: Spring-cage connection, Number of positions: 15, Cross section: 0.08 mm ² - 4 mm ² , AWG 28 - 12, Width: 78 mm, Height: 39 mm, Color: gray |
| 3045145 | UPBV 2,5/ 1 | Connectors, Connection method: Screw connection, Screw connection, Number of positions: 1, Cross section: 0.14 mm ² - 4 mm ² , AWG 26 - 12, Width: 5.2 mm, Height: 47 mm, Color: gray |
| 3045240 | UPBV 2,5/ 1 BU | Connectors, Connection method: Screw connection, Screw connection, Number of positions: 1, Cross section: 0.14 mm ² - 4 mm ² , AWG 26 - 12, Width: 5.2 mm, Height: 47 mm, Color: blue |
| 3045253 | UPBV 2,5/ 1 GNYE | Connectors, Connection method: Screw connection, Screw connection, Number of positions: 1, Cross section: 0.14 mm ² - 4 mm ² , AWG 26 - 12, Width: 5.2 mm, Height: 47 mm, Color: green-yellow |

| | | |
|---------|--------------------|---|
| 3045318 | UPBV 2,5/ 1-L | Connectors, Connection method: Screw connection, Screw connection, Number of positions: 1, Cross section: 0.14 mm ² - 4 mm ² , AWG 26 - 12, Width: 5.2 mm, Height: 47 mm, Color: gray |
| 3045321 | UPBV 2,5/ 1-L BU | Connectors, Connection method: Screw connection, Screw connection, Number of positions: 1, Cross section: 0.14 mm ² - 4 mm ² , AWG 26 - 12, Width: 5.2 mm, Height: 47 mm, Color: blue |
| 3045334 | UPBV 2,5/ 1-L GNYE | Connectors, Connection method: Screw connection, Screw connection, Number of positions: 1, Cross section: 0.14 mm ² - 4 mm ² , AWG 26 - 12, Width: 5.2 mm, Height: 47 mm, Color: green-yellow |
| 3045347 | UPBV 2,5/ 1-M | Connectors, Connection method: Screw connection, Screw connection, Number of positions: 1, Cross section: 0.14 mm ² - 4 mm ² , AWG 26 - 12, Width: 5.2 mm, Height: 47 mm, Color: gray |
| 3045350 | UPBV 2,5/ 1-M BU | Connectors, Connection method: Screw connection, Screw connection, Number of positions: 1, Cross section: 0.14 mm ² - 4 mm ² , AWG 26 - 12, Width: 5.2 mm, Height: 47 mm, Color: blue |
| 3045363 | UPBV 2,5/ 1-M GNYE | Connectors, Connection method: Screw connection, Screw connection, Number of positions: 1, Cross section: 0.14 mm ² - 4 mm ² , AWG 26 - 12, Width: 5.2 mm, Height: 47 mm, Color: green-yellow |
| 3045376 | UPBV 2,5/ 1-R | Connectors, Connection method: Screw connection, Screw connection, Number of positions: 1, Cross section: 0.14 mm ² - 4 mm ² , AWG 26 - 12, Width: 5.2 mm, Height: 47 mm, Color: gray |
| 3045389 | UPBV 2,5/ 1-R BU | Connectors, Connection method: Screw connection, Screw connection, Number of positions: 1, Cross section: 0.14 mm ² - 4 mm ² , AWG 26 - 12, Width: 5.2 mm, Height: 47 mm, Color: blue |
| 3045392 | UPBV 2,5/ 1-R GNYE | Connectors, Connection method: Screw connection, Screw connection, Number of positions: 1, Cross section: 0.14 mm ² - 4 mm ² , AWG 26 - 12, Width: 5.2 mm, Height: 47 mm, Color: green-yellow |
| 3045402 | UPBV 2,5/ 2 | Connectors, Connection method: Screw connection, Screw connection, Number of positions: 2, Cross section: 0.14 mm ² - 4 mm ² , AWG 26 - 12, Width: 10.4 mm, Height: 47 mm, Color: gray |
| 3045415 | UPBV 2,5/ 3 | Connectors, Connection method: Screw connection, Screw connection, Number of positions: 3, Cross section: 0.14 mm ² - 4 mm ² , AWG 26 - 12, Width: 15.6 mm, Height: 47 mm, Color: gray |
| 3045428 | UPBV 2,5/ 4 | Connectors, Connection method: Screw connection, Screw connection, Number of positions: 4, Cross section: 0.14 mm ² - 4 mm ² , AWG 26 - 12, Width: 20.8 mm, Height: 47 mm, Color: gray |
| 3045431 | UPBV 2,5/ 5 | Connectors, Connection method: Screw connection, Screw connection, Number of positions: 5, Cross section: 0.14 mm ² - 4 mm ² , AWG 26 - 12, Width: 26 mm, Height: 47 mm, Color: gray |
| 3045444 | UPBV 2,5/ 6 | Connectors, Connection method: Screw connection, Screw connection, Number of positions: 6, Cross section: 0.14 mm ² - 4 mm ² , AWG 26 - 12, Width: 31.2 mm, Height: 47 mm, Color: gray |
| 3045457 | UPBV 2,5/ 7 | Connectors, Connection method: Screw connection, Screw connection, Number of positions: 7, Cross section: 0.14 mm ² - 4 mm ² , AWG 26 - 12, Width: 36.4 mm, Height: 47 mm, Color: gray |

| | | |
|---------|-------------|---|
| 3045460 | UPBV 2,5/ 8 | Connectors, Connection method: Screw connection, Screw connection, Number of positions: 8, Cross section: 0.14 mm ² - 4 mm ² , AWG 26 - 12, Width: 41.6 mm, Height: 47 mm, Color: gray |
| 3045473 | UPBV 2,5/ 9 | Connectors, Connection method: Screw connection, Screw connection, Number of positions: 9, Cross section: 0.14 mm ² - 4 mm ² , AWG 26 - 12, Width: 46.8 mm, Height: 47 mm, Color: gray |
| 3045499 | UPBV 2,5/10 | Connectors, Connection method: Screw connection, Screw connection, Number of positions: 10, Cross section: 0.14 mm ² - 4 mm ² , AWG 26 - 12, Width: 52 mm, Height: 47 mm, Color: gray |
| 3045509 | UPBV 2,5/11 | Connectors, Connection method: Screw connection, Screw connection, Number of positions: 11, Cross section: 0.14 mm ² - 4 mm ² , AWG 26 - 12, Width: 57.2 mm, Height: 47 mm, Color: gray |
| 3045512 | UPBV 2,5/12 | Connectors, Connection method: Screw connection, Screw connection, Number of positions: 12, Cross section: 0.14 mm ² - 4 mm ² , AWG 26 - 12, Width: 62.4 mm, Height: 47 mm, Color: gray |
| 3045525 | UPBV 2,5/13 | Connectors, Connection method: Screw connection, Screw connection, Number of positions: 13, Cross section: 0.14 mm ² - 4 mm ² , AWG 26 - 12, Width: 67.6 mm, Height: 47 mm, Color: gray |
| 3045538 | UPBV 2,5/14 | Connectors, Connection method: Screw connection, Screw connection, Number of positions: 14, Cross section: 0.14 mm ² - 4 mm ² , AWG 26 - 12, Width: 72.8 mm, Height: 47 mm, Color: gray |
| 3045541 | UPBV 2,5/15 | Connectors, Connection method: Screw connection, Screw connection, Number of positions: 15, Cross section: 0.14 mm ² - 4 mm ² , AWG 26 - 12, Width: 78 mm, Height: 47 mm, Color: gray |

Diagrams/Drawings

Circuit diagram



Address

PHOENIX CONTACT Inc., USA
586 Fulling Mill Road
Middletown, PA 17057, USA
Phone (800) 888-7388
Fax (717) 944-1625
<http://www.phoenixcon.com>



© 2011 Phoenix Contact
Technical modifications reserved;