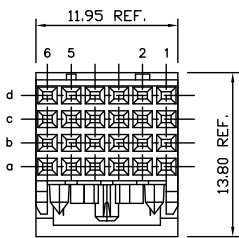


Tous droits strictement réservés. Reproduction ou communication à des fins commerciales sans autorisation écrite du propriétaire. Toute réimpression sans autorisation écrite du propriétaire. Property of FCI. Copyright FCI.

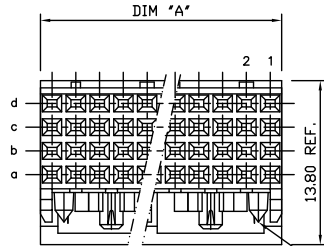


All rights strictly reserved. Reproduction or issue to third parties in any form or by any means without written authority from the proprietor. Property of FCI. Copyright FCI.

PRODUCT NUMBER
93235-YYY
93235-YYLF

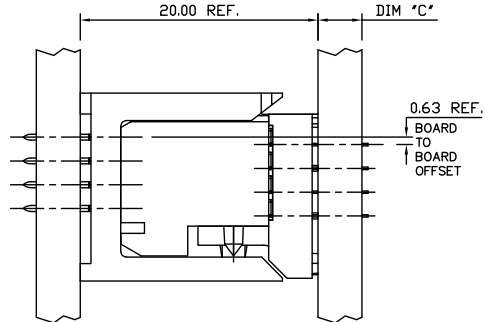
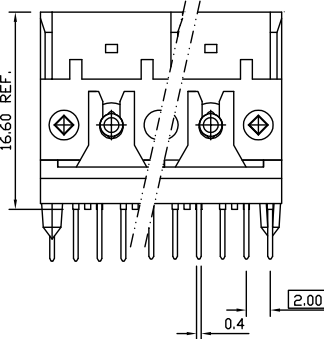
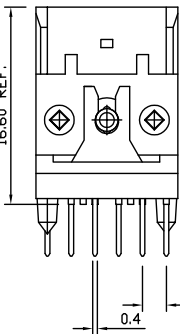
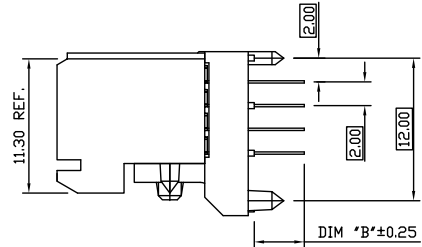


4X6MM -X11, -X12, AND -X13



4X12MM -X21, -X22, AND -X23  
4X24MM -X31, -X31S, -X32, AND -X33  
4X48MM -X41, -X41S, -X42, AND -X43

NOTE 7



PLATING CONTACT AREA:	
DASH NR:	PERFORMANCE LEVEL
-1YY/1YYLF	TELCORDIA CO
-2YY/2YYLF	CUSTOMER SPECIAL
-3YY/3YYLF	CUSTOMER SPECIAL

mat'l. code				tolerances unless otherwise specified		CUSTOMER COPY		
SEE NOTES						www.fciconnect.com		
ltr	ecn no	dr	date	linear	.X ±.3	projection	title	
M	D607-0171	Cenh	05/25/07		.XX ±.10			VERT. SIG. RECEPT ASSY 4x6, 4x12, 4x24, 4x48
N	D607-0375	Cenh	9/10/07		.XXX ±.050			
P	D608-0171	TER	9/3/08	angles	0° ±2°	product family METRAL (tm)	code	
R	D609-0088	Cenh	03/03/09	dr	T.BRUNGARD 2/22/03			size
K	V03-0722	LP	8/22/03	engr	M.GRAY 2/22/03	scale	A	
L	V05-0398	DAI	04/29/30	appd	M.GRAY 2/22/03			1:1
sheet	revision	R	R	R				sheet
index	sheet	1	2	3				1 of 3

cage code 22526

ACAD

PDM: Rev:R

STATUS: Released

Printed: May 10, 2011

Tous droits strictement réservés. Reproduction ou communication e des Mars interdite sous quelque forme que ce soit sans autorisation écrite du propriétaire. Propriété de c FCI. Droits de reproduction FCI.



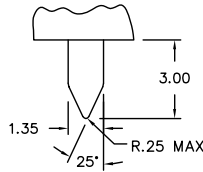
All rights strictly reserved. Reproduction or issue to third parties in any form whatever is not permitted without written authority from the proprietor. Property of FCI. Copyright FCI.

PRODUCT NUMBER	DIM "A"	TAIL LGTH DIM "B"	PCB THK. DIM "C"	PRODUCT NUMBER	DIM "A"	TAIL LGTH DIM "B"	PCB THK. DIM "C"	PRODUCT NUMBER	DIM "A"	TAIL LGTH DIM "B"	PCB THK. DIM "C"
93235-X11	-	2.65	1.6	93235-X12	-	3.45	2.4	93235-X13	-	4.25	3.2
93235-X21	23.95 REF.	2.65	1.6	93235-X22	23.95 REF.	3.45	2.4	93235-X23	23.95 REF.	4.25	3.2
93235-X31	47.95 REF.	2.65	1.6	93235-X32	47.95 REF.	3.45	2.4	93235-X33	47.95 REF.	4.25	3.2
93235-X41	95.95 REF.	2.65	1.6	93235-X42	95.95 REF.	3.45	2.4	93235-X43	95.95 REF.	4.25	3.2
93235-X31S (8)	47.95 REF.	2.65	1.6								
93235-X41S (8)	95.95 REF.	2.65	1.6								

\*SEE NOTE 10 FOR LEAD FREE OPTION

PRODUCT NUMBER	DIM "A"	TAIL LGTH DIM "B"	DIM "C"	ROW	Configuration TERMINAL IN POSITION					
					6	5	4	3	2	1
93235-X14/X14LF	-	3.45	2.4	D	X	X	X	X	X	X
				C	X	X	X	X	-	
				B	X	X	X	X	X	
				A	X	X	X	X	X	

"-" POSITION NOT LOADED  
"X" POSITION LOADED



VIEW E, NOTE 8  
SCALE 2:1

NOTES:

- BODY MATERIAL: LCP 30% GLASS  
FLAME RETARDANT ACC. UL 94-V0
- TERMINAL MATERIAL: PHOSPHOR BRONZE
- PLATING SOLDERTAILS  
93237-XYX 1.0-2.0 µm SnPb TIN LEAD  
93237-XYLF 1.0-2.0 µm Sn (LEAD FREE)
- APPLICATION SPECIFICATIONS:  
BUS-20-059  
GS-20-001
- PRODUCT MARKING: (PART NUMBER & LOT CODE).
- INDICATED HOLES ARE UNPLATED  
AND BATCH I.D.
- DIAMOND LOCATION PEG ARE ONLY EXISTED ON THE BOTH SIDES OF PRODUCT.
- PRODUCT WITH AN "S" SUFFIX WILL HAVE A SPECIAL ALIGNMENT POST AS SPECIFIED PER DETAIL E, SHEET 2.  
EXAMPLE/LEAD FREE OPTION: 93235-XYSLF
- THESE PRODUCTS WHERE PART NUMBERS ENDS IN "LF" MEET THE EUROPEAN UNION DIRECTIVES AND OTHER COUNTRY REGULATIONS AS DESCRIBED IN GS-22-008.
- FOR PLATING SPEC, REFER TO DRAWING 10097866.  
FOR LEAD FREE PART NUMBERS ADD "LF" SUFFIX. EXAMPLE 93235-XYLF
- ALL PRODUCTS WILL WITHSTAND EXPOSURE TO 240°C FOR 60 SECONDS IN A CONVECTION, INFRARED OR VAPOR PHASE REFLOW OVEN.

mat'l. code SEE NOTES				tolerances unless otherwise specified		CUSTOMER COPY		FCI www.fciconnect.com	
ltr	ecn no	dr	date	linear	.X ±.3	projection	title	VERT. SIG. RECEIPT ASSY	
R				angles	.XX ±.10 .XXX ±.050 0° ±2°	MM	4x6, 4x12, 4x24, 4x48	product family	METRAL (tm)
				dr	T.BRUNGARD 2/22/03	MM	size	dwg no	code
				engr	M.GRAY 2/22/03	1:1	A	93235	213
				chr	M.GRAY 2/22/03				sheet
				appd	M.GRAY 2/22/03				2 of -
sheet index	revision sheet							cage code	22526

ACAD

PDM: Rev:R

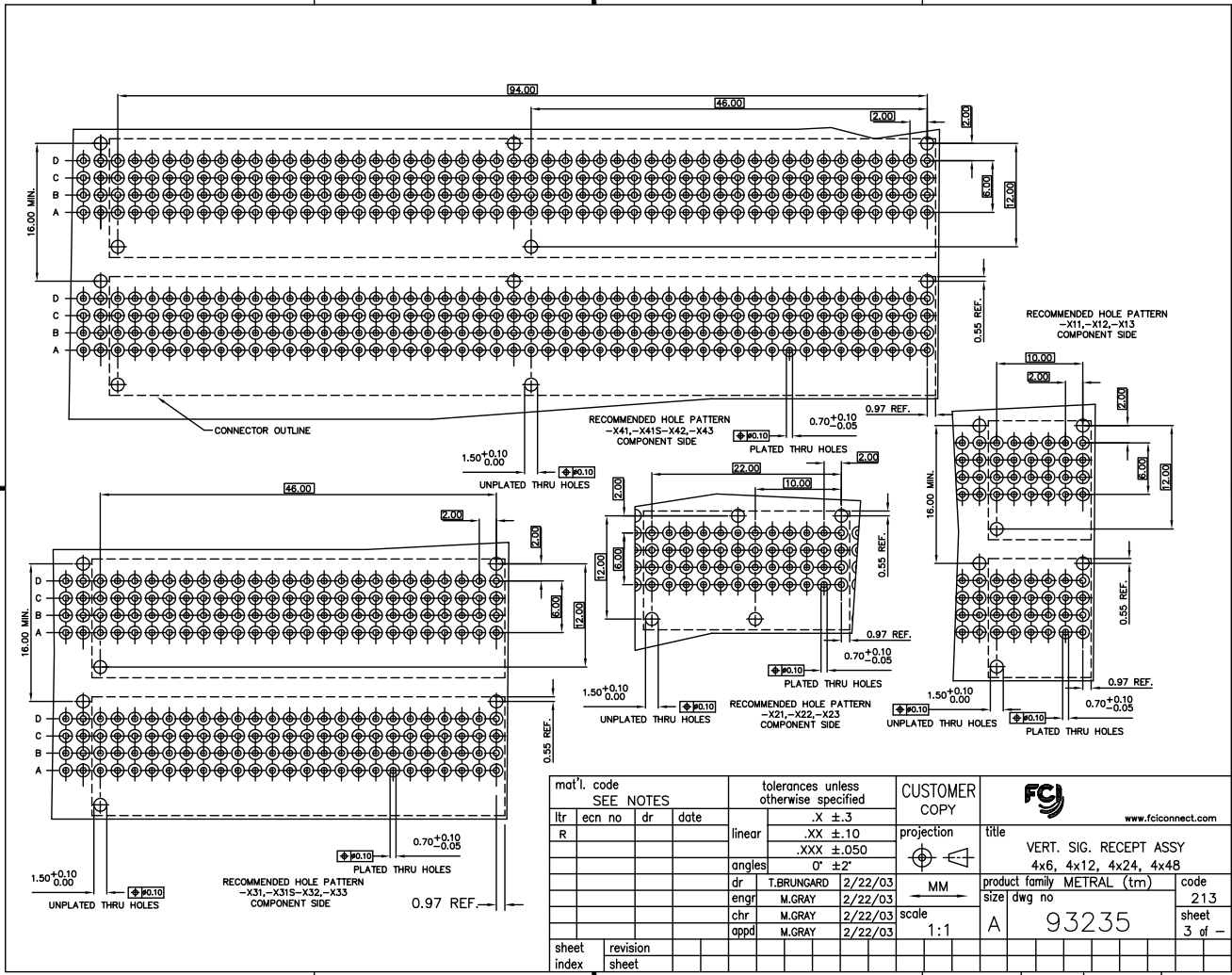
STATUS: Released

Printed: May 10, 2011

Tous droits strictement réservés. Reproduction ou communication e des Mars  
Interdite sous quelque forme que ce soit sans autorisation écrite du propriétaire.  
Propriété de c FCI. Droits de reproduction FCI.



All rights strictly reserved. Reproduction or communication in any  
form whatsoever is not permitted without written authority from the proprietor.  
Property of FCI. Copyright FCI.



mat'l. code		tolerances unless otherwise specified		CUSTOMER COPY	
SEE NOTES		.X ±.3		www.fciconnect.com	
ltr	ecn no	dr	date	linear	.XX ±.10
R				projection	.XXX ±.050
				angles	0° ±2°
		dr	T.BRUNGARD 2/22/03	MM	product family METRAL (tm)
		engr	M.GRAY 2/22/03	scale	size
		chr	M.GRAY 2/22/03	1:1	93235
		appd	M.GRAY 2/22/03		code
sheet index	revision sheet				213
					3 of -

ACAD

PDM: Rev:R

STATUS: Released

Printed: May 11 2011