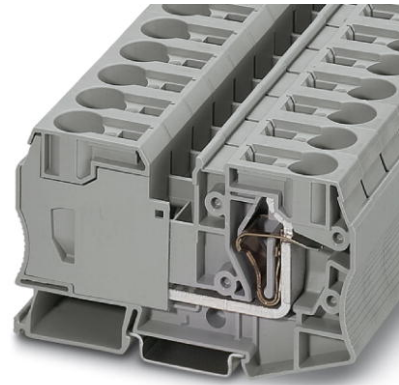


ST 35


Order No.: 3036178



<http://eshop.phoenixcontact.de/phoenix/treeViewClick.do?UID=3036178>


Spring-cage feed-through terminal block, Connection method: Spring-cage connection, Cross section: 2.5 mm² - 35 mm², AWG 14 - 2, Width: 16 mm, Color: gray, Mounting type: NS 35/7.5, NS 35/15



Commercial data	
GTIN (EAN)	 4 017918 821043
sales group	A600
Pack	10 pcs.
Customs tariff	85369010
Catalog page information	Page 147 (CL1-2011)

Product notes

WEEE/RoHS-compliant since: 01/01/2003



<http://www.download.phoenixcontact.com>
Please note that the data given here has been taken from the online catalog. For comprehensive information and data, please refer to the user documentation. The General Terms and Conditions of Use apply to Internet downloads.

Technical data	
General	
Number of levels	1
Number of connections	2
Color	gray

Insulating material	PA
Inflammability class acc. to UL 94	V0

Dimensions

Width	16 mm
Length	100 mm
Height NS 35/7.5	59 mm
Height NS 35/15	66.5 mm

Technical data

Maximum load current	125 A (with 35 mm ² conductor cross section)
Rated surge voltage	8 kV
Pollution degree	3
Surge voltage category	III
Insulating material group	I
Connection in acc. with standard	IEC 60947-7-1
Nominal current I _N	125 A
Nominal voltage U _N	1000 V
Open side panel	nein

Connection data

Conductor cross section solid min.	2.5 mm ²
Conductor cross section solid max.	35 mm ²
Conductor cross section stranded min.	2.5 mm ²
Conductor cross section stranded max.	35 mm ²
Conductor cross section AWG/kcmil min.	14
Conductor cross section AWG/kcmil max	2
Conductor cross section stranded, with ferrule without plastic sleeve min.	2.5 mm ²
Conductor cross section stranded, with ferrule without plastic sleeve max.	35 mm ²
Conductor cross section stranded, with ferrule with plastic sleeve min.	2.5 mm ²
Conductor cross section stranded, with ferrule with plastic sleeve max.	35 mm ²
2 conductors with same cross section, stranded, TWIN ferrules with plastic sleeve, min.	2.5 mm ²
2 conductors with same cross section, stranded, TWIN ferrules with plastic sleeve, max.	10 mm ²

Connection method	Spring-cage connection
Stripping length	25 mm
Internal cylindrical gage	A8

Certificates / Approvals



Certification BV, CB, CSA, CUL, DNV, GL, GOST, KR, LR, NK, UL, VDE-PZI

Certification Ex: IECEx, KEMA-EX

Accessories

Item	Designation	Description
Bridges		
3005963	FBS 2-16	Plug-in bridge, Number of positions: 2, Color: red
3030899	RB ST 35-(2,5/4)	Reducing bridge, Number of positions: 2, Color: red
Marking		
0819217	UC-TM 16	UniCard materials for labeling terminal blocks with a marker groove, 32-section, can be labeled with BLUEMARK and CMS-P1-PLOTTER, color: white
0824621	UC-TM 16 CUS	UniCard sheets, for labeling terminal blocks with a zack marker strip groove, can be printed as per customer requirements
0819262	UC-TMF 16	UniCard materials for labeling terminal blocks using a flat marker groove, 32-section, can be labeled with BLUEMARK and CMS-P1-PLOTTER, color: white
0824678	UC-TMF 16 CUS	UniCard sheets, for labeling terminal blocks with a flat zack marker sheet groove, can be printed as per customer requirements
0829146	UCT-TM 16	UniCard materials for thermal transfer printer, for labeling terminal blocks with a marker groove, 18-section, can be labeled with THERMOMARK CARD and BLUEMARK LED, color: white
0829637	UCT-TM 16 CUS	Terminal block marking, can be labeled as per customer specifications
0829218	UCT-TMF 16	UniCard materials for thermal transfer printer, for labeling terminal blocks with a horizontal marker groove, 24-section, can be labeled with THERMOMARK CARD and BLUEMARK LED, color: white

0829693	UCT-TMF 16 CUS	Terminal block marking, can be labeled as per customer specifications
0827463	ZB 16 CUS	Terminal block marking, can be labeled as per customer specifications
0827461	ZB 16:UNPRINTED	
0827465	ZBF 16 CUS	Terminal block marking, can be labeled as per customer specifications
0827464	ZBF 16:UNPRINTED	

Plug/Adapter

0201731	MPS-IH BK	Insulating sleeve, Color: black
0201689	MPS-IH BU	Insulating sleeve, Color: blue
0201702	MPS-IH GN	Insulating sleeve, Color: green
0201728	MPS-IH GY	Insulating sleeve, Color: gray
0201676	MPS-IH RD	Insulating sleeve, Color: red
0201715	MPS-IH VT	Insulating sleeve, Color: violet
0201663	MPS-IH WH	Insulating sleeve, Color: white
0201692	MPS-IH YE	Insulating sleeve, Color: yellow
0201744	MPS-MT	Test plugs

Tools

1206612	SZF 3-1,0X5,5	Actuation tool, for ST terminal blocks, also suitable for use as a bladed screwdriver, size: 1.0 x 5.5 x 150 mm, 2-component grip, with non-slip grip
---------	---------------	---

Diagrams/Drawings

Circuit diagram



Address

PHOENIX CONTACT Inc., USA
586 Fulling Mill Road
Middletown, PA 17057, USA
Phone (800) 888-7388
Fax (717) 944-1625
<http://www.phoenixcon.com>



© 2011 Phoenix Contact
Technical modifications reserved;