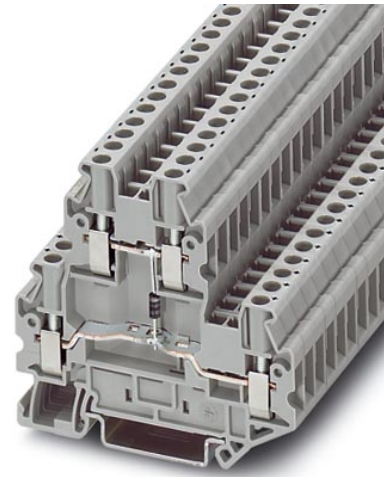



UTT 2,5-DIO/U-O

Order No.: 3046663



<http://eshop.phoenixcontact.de/phoenix/treeViewClick.do?UID=3046663>

Component terminal block, Cross section: 0.14 mm² - 4 mm²,
AWG: 26 - 12, Connection type: Screw connection, Width: 5.2 mm,
Color: gray, Mounting type: NS 35/7.5, NS 35/15

| Commercial data | |
|--------------------------|--|
| GTIN (EAN) |  4 017918 997199 |
| sales group | A832 |
| Pack | 50 pcs. |
| Customs tariff | 85369010 |
| Catalog page information | Page 74 (CL1-2011) |

Product notes

WEEE/RoHS-compliant since:
01/17/2005



<http://www.download.phoenixcontact.com>
Please note that the data given here has been taken from the online catalog. For comprehensive information and data, please refer to the user documentation. The General Terms and Conditions of Use apply to Internet downloads.

Technical data

General

| | |
|------------------------------------|--|
| Note | The max. current is determined by the diode. Installed: Diode 1N 4007, reverse voltage: 1300 V, maximum continuous current: 0.5 A. |
| Number of levels | 2 |
| Number of connections | 4 |
| Color | gray |
| Insulating material | PA |
| Inflammability class acc. to UL 94 | V0 |

Dimensions

| | |
|------------------|---------|
| Width | 5.2 mm |
| Length | 69.9 mm |
| Height NS 35/7.5 | 65 mm |
| Height NS 35/15 | 72.5 mm |

Technical data

| | |
|--------------------------------|---|
| Maximum load current | 28 A (with 4 mm ² conductor cross section) |
| Rated surge voltage | 6 kV |
| Pollution degree | 3 |
| Surge voltage category | III |
| Insulating material group | I |
| Nominal current I _N | 24 A |
| Nominal voltage U _N | 500 V |

Connection data

| | |
|--|----------------------|
| Conductor cross section solid min. | 0.14 mm ² |
| Conductor cross section solid max. | 4 mm ² |
| Conductor cross section stranded min. | 0.14 mm ² |
| Conductor cross section stranded max. | 4 mm ² |
| Conductor cross section AWG/kcmil min. | 26 |
| Conductor cross section AWG/kcmil max | 12 |
| Conductor cross section stranded, with ferrule without plastic sleeve min. | 0.14 mm ² |
| Conductor cross section stranded, with ferrule without plastic sleeve max. | 2.5 mm ² |

| | |
|---|----------------------|
| Conductor cross section stranded, with ferrule with plastic sleeve min. | 0.14 mm ² |
| Conductor cross section stranded, with ferrule with plastic sleeve max. | 2.5 mm ² |
| 2 conductors with same cross section, solid min. | 0.14 mm ² |
| 2 conductors with same cross section, solid max. | 1.5 mm ² |
| 2 conductors with same cross section, stranded min. | 0.14 mm ² |
| 2 conductors with same cross section, stranded max. | 1.5 mm ² |
| 2 conductors with same cross section, stranded, ferrules without plastic sleeve, min. | 0.14 mm ² |
| 2 conductors with same cross section, stranded, ferrules without plastic sleeve, max. | 1.5 mm ² |
| 2 conductors with same cross section, stranded, TWIN ferrules with plastic sleeve, min. | 0.5 mm ² |
| 2 conductors with same cross section, stranded, TWIN ferrules with plastic sleeve, max. | 1.5 mm ² |
| Connection method | Screw connection |
| Stripping length | 9 mm |
| Internal cylindrical gage | A3 |
| Screw thread | M3 |
| Tightening torque, min | 0.5 Nm |
| Tightening torque max | 0.6 Nm |

Certificates / Approvals



Certification CSA, CUL, UL

Accessories

| Item | Designation | Description |
|-----------------|----------------|---|
| Assembly | | |
| 3047316 | ATP-UTTB 2,5/4 | Partition plate, Length: 74.3 mm, Width: 2.2 mm, Height: 70 mm, Color: gray |

| | | |
|---------|--------------|---|
| 3047293 | D-UTTB 2,5/4 | End cover, Length: 69.9 mm, Width: 2.2 mm, Height: 57.5 mm, Color: gray |
|---------|--------------|---|

Bridges

| | | |
|---------|----------|---|
| 3030161 | FBS 2-5 | Plug-in bridge, Number of positions: 2, Color: red |
| 3030174 | FBS 3-5 | Plug-in bridge, Number of positions: 3, Color: red |
| 3030187 | FBS 4-5 | Plug-in bridge, Number of positions: 4, Color: red |
| 3030190 | FBS 5-5 | Plug-in bridge, Number of positions: 5, Color: red |
| 3030213 | FBS 10-5 | Plug-in bridge, Number of positions: 10, Color: red |
| 3030226 | FBS 20-5 | Plug-in bridge, Number of positions: 20, Color: red |
| 3038930 | FBS 50-5 | Plug-in bridge, Number of positions: 50, Color: red |

General

| | | |
|---------|---------------|--|
| 3047303 | DP-UTTB 2,5/4 | Spacer plate, Length: 69.9 mm, Width: 2.6 mm, Height: 33 mm, Color: gray |
|---------|---------------|--|

Marking

| | | |
|---------|------------------------|--|
| 0818153 | UC-TMF 5 | UniCard materials for labeling terminal blocks using a flat marker groove, 96-section, can be labeled with BLUEMARK and CMS-P1-PLOTTER, color: white |
| 0824638 | UC-TMF 5 CUS | UniCard sheets, for labeling terminal blocks with a flat zack marker sheet groove, can be printed as per customer requirements |
| 0828744 | UCT-TMF 5 | UniCard materials for thermal transfer printer, for labeling terminal blocks with a horizontal marker groove, 72-section, can be labeled with THERMOMARK CARD and BLUEMARK LED, color: white |
| 0829658 | UCT-TMF 5 CUS | Terminal block marking, can be labeled as per customer specifications |
| 0811228 | X-PEN 0,35 | Marker pen without ink cartridge, for manual labeling of markers, labeling extremely wipe-proof, line thickness 0.35 mm |
| 1050004 | ZB 5 :UNBEDRUCKT | Zack strip, unprinted, 10-section, for individual labeling with M-PEN, ZB-T or CMS system, pack is sufficient for 100 terminal blocks, for a terminal width of 5.2 mm, color: White |
| 5060906 | ZB 5/WH-100:UNBEDRUCKT | Zack strip, unprinted: 10-section, for individual labeling with M-PEN, ZB-T or CMS system, large batch, sufficient for labeling 1000 terminal blocks, for a terminal width of 5.2 mm, color: White |
| 1050295 | ZB 5:SO/CMS | Zack strip, 10-section, divisible, special printing, marking according to customer requirements |

Plug/Adapter

| | | |
|---------|-----------|---------------------------------|
| 0201689 | MPS-IH BU | Insulating sleeve, Color: blue |
| 0201676 | MPS-IH RD | Insulating sleeve, Color: red |
| 0201663 | MPS-IH WH | Insulating sleeve, Color: white |

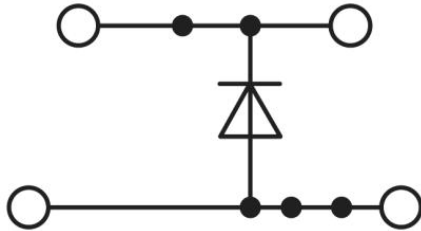
| | | |
|---------|--------|---------------------------|
| 0201744 | MPS-MT | Test plugs |
| 3030925 | PAI-4 | Test adapter, Color: gray |
| 3030983 | PS-5 | Test adapter, Color: red |

Tools

| | | |
|---------|-------------------------|---|
| 1212587 | SF-SL 0,6X3,5-100 S-VDE | Actuation tool, for ST terminal blocks, VDE insulated, with slimmer insulation integrated in the blade, also suitable for use as a bladed screwdriver, size: 0.6 x 3.5 x 100 mm, 2-component grip, with non-slip grip |
|---------|-------------------------|---|

Diagrams/Drawings

Circuit diagram



Address

PHOENIX CONTACT Inc., USA
586 Fulling Mill Road
Middletown, PA 17057, USA
Phone (800) 888-7388
Fax (717) 944-1625
<http://www.phoenixcon.com>



© 2011 Phoenix Contact
Technical modifications reserved;