

4

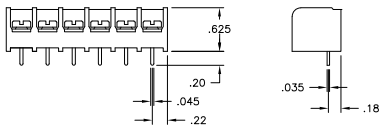
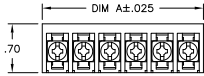
3

2

1

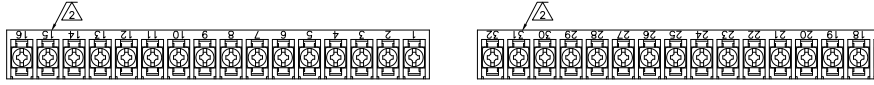
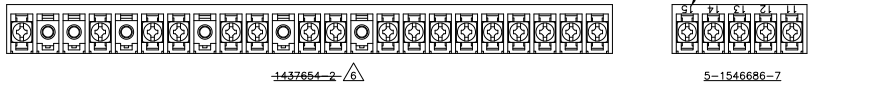
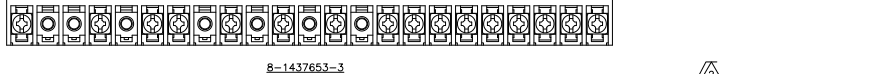
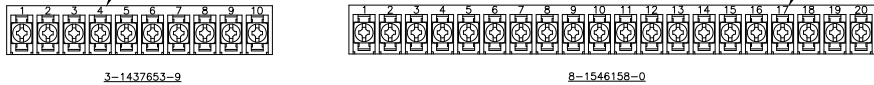
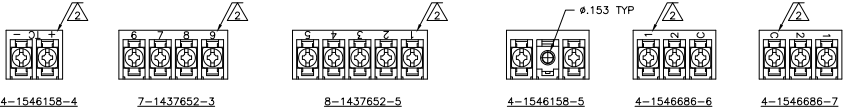
THIS DRAWING IS UNPUBLISHED. RELEASED FOR PUBLICATION. ALL RIGHTS RESERVED.

LOC	DIST	REVISIONS					
FT	0	P	LTR	DESCRIPTION	DATE	BY	APPD
		K4		REVISED PER ECO-11-010566	23MAY11	HMR	CR



DETAIL FOR P/N's 4-1546160-6, 4-1546160-7 AND 4-1546160-8

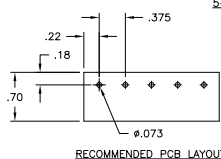
- △ CAPTIVE SCREWS.
- △ MARK WITH WHITE PERMANENT INK.
- 3 ALL SCREWS TO BE DRIVEN DOWN TO TERMINAL SURFACE.
- △ NICKEL PLATED BRASS SCREWS.
- △ PRELIMINARY PART NUMBER.
- △ OBSOLETE PARTS: OBSOLETE CIS STREAMLINING PER D.RENAUD/D.SINISI



MATERIAL:
HOUSING: THERMOPLASTIC, UL94V-0 BLACK.
TERMINALS: BRIGHT TIN PLATED, COPPER ALLOY.
SCREWS: 6-32, STEEL, ZINC PLATED WITH CLEAR CHROMATE.

ELECTRICAL:
CURRENT RATING UL/CSA:
CLASS C: 25A, 300V.
CLASS D: 5A, 600V.
WIRE RANGE: 12-22 AWG

MECHANICAL:
RECOMMENDED TIGHTENING TORQUE: 7 IN.-LBS.
OPERATING TEMP.: 105°C MAX



THIS DRAWING IS A CONTROLLED DOCUMENT.

DIMENSIONS: INCHES DIMENSIONS: MILLIMETERS OTHER DIMENSIONS: MILLIMETERS FINISH	DIM: R. BROWN 22APR03 CHK: H. WAKEEM 22APR03 APPD: H. WAKEEM 22APR03 PRODUCT SPEC: --- APPLICATION SPEC: --- WEIGHT: ---	NAME: --- SIZE: A2 CASE CODE: 00779 DRAWING NO: C-3-1437652-9 RESTRICTED TO: --- SCALE: 1:1 SHEET: 1 of 2 REV: K4
---	---	--

CUSTOMER DRAWING

QTY	LOC	DIST	DESCRIPTION	DATE	BY	APPD
11.311	30		6PCV-30-006 4-1546686-5			
10.936	29		6PCV-29-006 1-1437656-2			
10.561	28		6PCV-28-006 8-1546158-6			
10.186	27		6PCV-27-006 8-1546158-5			
9.811	26		6PCV-26-006 4-1437654-5			
9.436	25		6PCV-25-006 4-1437654-1			
9.061	24		6PCV-24-006 8-1546158-2			
8.686	23		6PCV-23-006 4-1546686-3			
8.311	22		6PCV-22-006 3-1437654-4			
7.936	21		6PCV-21-006 3-1437654-1			
7.561	20		6PCV-20-323 8-1546158-0			
7.561	20		6PCV-20-006 1-1437654-9			
7.186	19		6PCV-19-006 1-1437654-4			
6.811	18		6PCV-18-006 1437654-7			
6.436	17		6PCV-17-899 4-1437664-2			
6.061	16		6PCV-17-006 9-1437653-8			
6.061	16		6PCV-16-1389 4-1546686-9			
6.061	16		6PCV-16-1388 4-1546686-8			
6.061	16		6PCV-16-1047 8-1437653-3			
6.061	16		6PCV-16-006 8-1437653-0			
5.686	15		6PCV-15-1298 1-1546160-8			
5.686	15		6PCV-15-006 7-1437653-4			
5.311	14		6PCV-14-006 6-1437653-8			
4.936	13		6PCV-13-1297 1-1546160-7			
4.936	13		6PCV-13-006 6-1437653-3			
4.561	12		6PCV-12-1296 1-1546160-6			
4.561	12		6PCV-12-006 5-1437653-1			
4.186	11		6PCV-11-006 4-1437653-5			
3.811	10		6PCV-10-1269 3-1437653-9			
3.811	10		6PCV-10-006 3-1437653-5			
3.436	9		6PCV-09-002 1546262-3			
3.436	9		6PCV-09-006 2-1437653-5			
3.061	8		6PCV-08-1394 1546262-7			
3.061	8		6PCV-08-1314 1-1437653-7			
3.061	8		6PCV-08-006 1-1437653-3			
2.686	7		6PCV-07-1399 1546262-9			
2.686	7		6PCV-07-006 1437653-7			
2.311	6		6PCV-06-1398 1546262-8			
2.311	6		6PCV-06-002 1546262-4			
2.311	6		6PCV-06-006 9-1437652-5			
1.936	5		6PCV-05-002 5-1546686-0			
1.936	5		6PCV-05-1267 8-1437652-5			
1.936	5		6PCV-05-006 8-1437652-2			
1.561	4		6PCV-04-1268 7-1437652-3			
1.561	4		6PCV-04-1143 7-1437662-2			
1.561	4		6PCV-04-006 6-1437652-7			
1.186	3		6PCV-03-1385 4-1546686-7			
1.186	3		6PCV-03-1384 4-1546686-6			
1.186	3		6PCV-03-006 5-1437652-4			
.811	2		6PCV-02-1393 1546262-6			
.811	2		6PCV-02-807 4-1546158-5			
.811	2		6PCV-02-1313 4-1437652-5			
.811	2		6PCV-02-1216 4-1546158-4			
.811	2		6PCV-02-006 3-1437652-9			

4

3

2


1

THIS DRAWING IS UNPUBLISHED. RELEASED FOR PUBLICATION
 © COPYRIGHT - By - ALL RIGHTS RESERVED.

LOC	DIST	REVISIONS			
P	LYR	DESCRIPTION	DATE	BY	APPD
-	-	SEE SHEET 1	-	-	-

DIM A REF	NO OF POS	CATALOG NUMBER	PART NUMBER
3.061	8	6PCV-08-2006	6-1546686-0
1.936	5	6PCV-05-2006	5-1546686-9
.811	2	6PCV-02-2006	5-1546686-8
1.936	5	6PCV-05-006	5-1546686-7
1.186	3	6PCV-03-006-1	5-1546686-6

SEE FIGURE A

THIS DRAWING IS A CONTROLLED DOCUMENT.		DRN	R. BROWN	22APR03	 TE Connectivity
DIMENSIONS: INCHES		CHK	H. WAKEEM	22APR03	
DIMENSIONS: INCHES 0 PLG ± .00 1 PLG ± .00 2 PLG ± .02 3 PLG ± .010 4 PLG ± .005 ANGLES ± .1° FINISH -		APPR	H. WAKEEM	22APR03	NAME
MATERIAL -		PRODUCT SPEC		6PCV-XX-006	
FINISH -		APPLICATION SPEC		SIZE	CAGE CODE
		WEIGHT -		A2	00779
		CUSTOMER DRAWING		DRAWING NO. C=3-1437652-9	
				SCALE	1:1
				SHEET	2 of 2
				REV	K4

1471-9 (3/11)

3-1437652-9