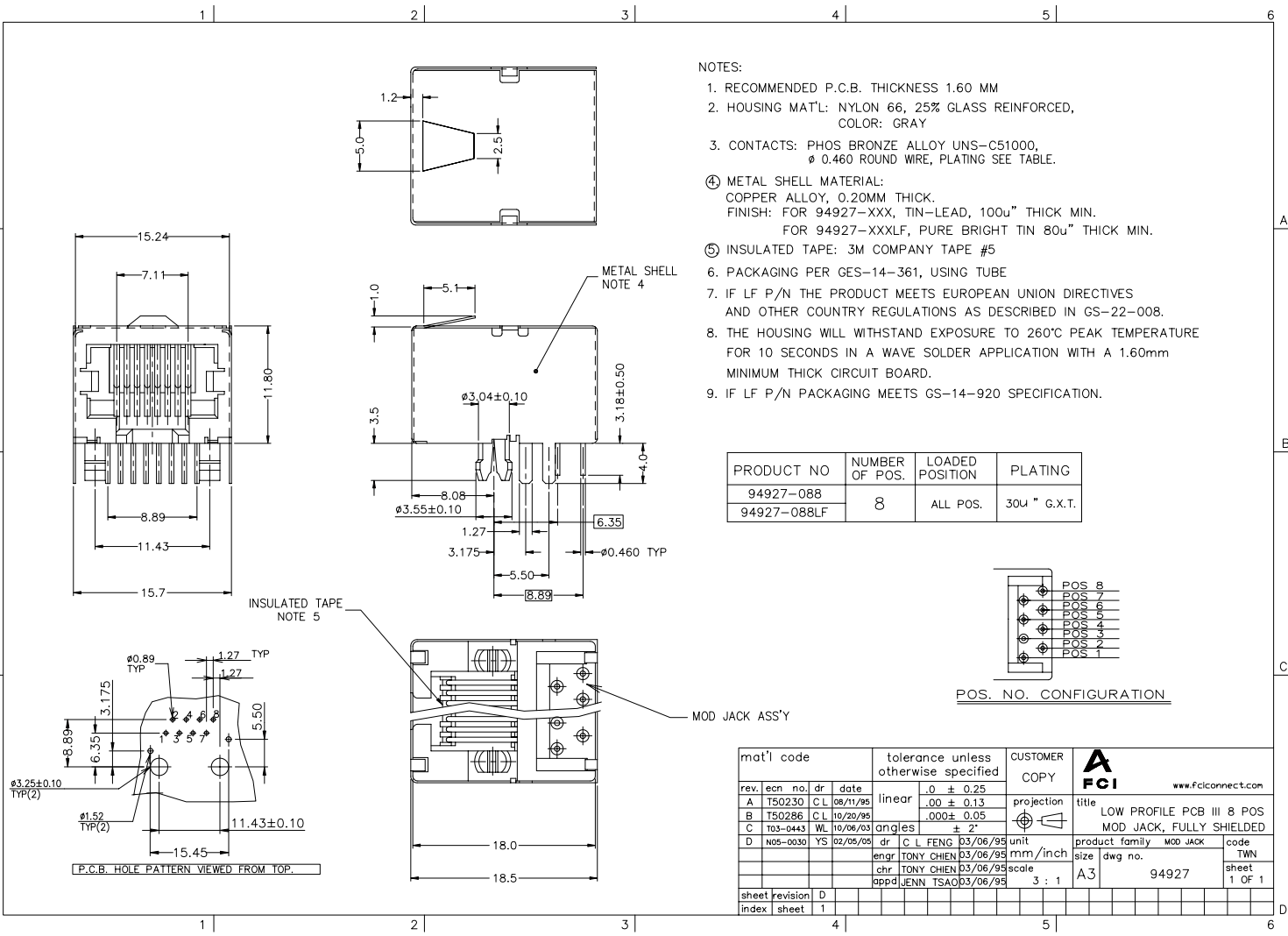


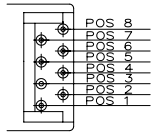
Tous droits réservés. Toute réimpression, reproduction ou utilisation sans autorisation écrite de la propriété de BERG ELECTRONICS. Toute réimpression sans autorisation écrite de BERG ELECTRONICS.

All rights strictly reserved. Reproduction or use to third parties in any form without the written authority from the proprietor. Copyright BERG ELECTRONICS by



- NOTES:
- RECOMMENDED P.C.B. THICKNESS 1.60 MM
 - HOUSING MAT'L: NYLON 66, 25% GLASS REINFORCED, COLOR: GRAY
 - CONTACTS: PHOS BRONZE ALLOY UNS-C51000, ϕ 0.460 ROUND WIRE, PLATING SEE TABLE.
 - METAL SHELL MATERIAL: COPPER ALLOY, 0.20MM THICK. FINISH: FOR 94927-XXX, TIN-LEAD, 100u" THICK MIN. FOR 94927-XXXLF, PURE BRIGHT TIN 80u" THICK MIN.
 - INSULATED TAPE: 3M COMPANY TAPE #5
 - PACKAGING PER GES-14-361, USING TUBE
 - IF LF P/N THE PRODUCT MEETS EUROPEAN UNION DIRECTIVES AND OTHER COUNTRY REGULATIONS AS DESCRIBED IN GS-22-008.
 - THE HOUSING WILL WITHSTAND EXPOSURE TO 260°C PEAK TEMPERATURE FOR 10 SECONDS IN A WAVE SOLDER APPLICATION WITH A 1.60mm MINIMUM THICK CIRCUIT BOARD.
 - IF LF P/N PACKAGING MEETS GS-14-920 SPECIFICATION.

PRODUCT NO	NUMBER OF POS.	LOADED POSITION	PLATING
94927-088	8	ALL POS.	30u" G.X.T.
94927-088LF			



POS. NO. CONFIGURATION

mat'l code		tolerance unless otherwise specified		CUSTOMER COPY		FCI		www.fciconnect.com		
rev.	ecn no.	dr	date	linear	.0 ± 0.25	projection	title	product family	MOD JACK	code
A	T50230	CL	08/11/95		.00 ± 0.13	A3	LOW PROFILE PCB III 8 POS MOD JACK, FULLY SHIELDED	size	dwg no.	TWN
B	T50286	CL	10/20/95		.000 ± 0.05					
C	T03-0443	WL	10/06/03	angles	± 2'	scale	94927	sheet	1 OF 1	
D	N05-0030	YS	02/05/05	dr	C L FENG D3/06/95	unit				
				enagr	TONY CHIEN D3/06/95	mm /inch				
				chr	TONY CHIEN D3/06/95	size				
				pppd	JENN TSAO D3/06/95	3 : 1				
sheet	revision	D								
index	sheet	1								