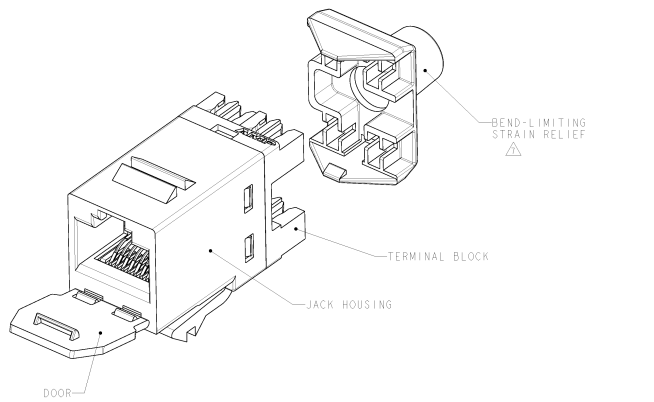
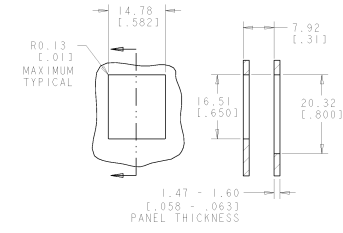
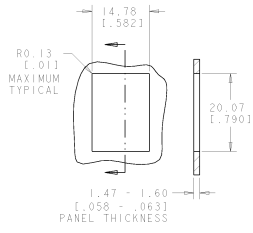
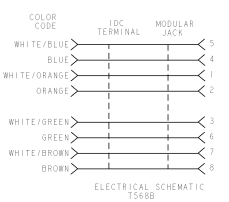
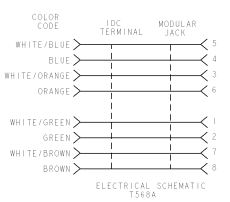
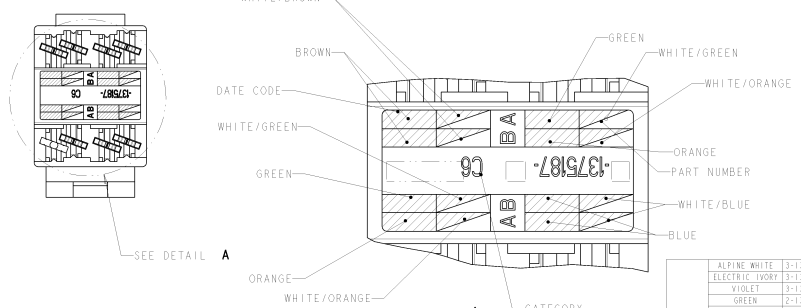
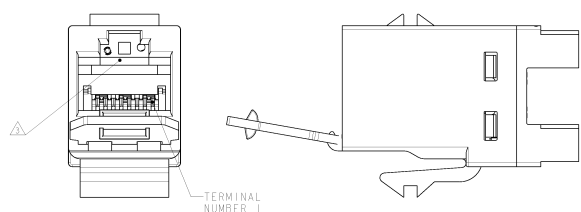


8	7	6	5	4	3	2	1
REVISED TO SPECIFICATIONS	REVISED FOR PRODUCTION						
DATE	DATE						
BY	BY						

REV. NO.	DESCRIPTION	DATE	INITIALS
00			
01	REVISED PER ECC-11-02003		



- △ MATERIAL: JACK HOUSING - POLYPHENYLENE OXIDE, 94V-0 RATED, 110 BLOCK, STRAIN RELIEF AND DOOR - POLYCARBONATE, ARRAY TRAY - PBT POLYESTER
- △ JACK CONTACTS ABRAZ - BERYLLIUM COPPER, PLATED WITH 1.27µm (0.00050) MINIMUM THICK GOLD IN LOCALIZED AREA AND 3.81µm (0.000150) MINIMUM THICK MATTE TIN IN BOARD INTERFACE AREA OVER 1.27µm (0.00050) MINIMUM THICK NICKEL UNDERPLATE.
- △ IDC TERMINALS - PHOSPHOROUS BRONZE, PLATED WITH 3.81µm (0.00015) MINIMUM THICK MATTE TIN OVER 1.27µm (0.0005) MINIMUM THICK NICKEL UNDERPLATE.
- 2. SL 110 JACK WILL TERMINATE 22-24 AWG SOLID AND 24-26 AWG STRANDED CONDUCTORS (1.27 ± 0.05) MAXIMUM INSULATION DIAMETER. JACK WILL ACCEPT CONDUCTORS UP TO 1.45 (0.057) BUT REQUIRE THE USE OF A STRAIN RELIEF.
- △ CAVITY CONFORMS TO FCC RULES AND REGULATIONS (PART 48 SUBPART F REQUIREMENTS).
- 4. MOUNTING PANEL THICKNESS 1.47 - 1.60 (0.058 - .063).
- △ THESE TWO SUGGESTED CUTOUP OPENINGS ARE USED IN TANDEM WITH DUAL FRONT AND BACK CUTOUPS.
- △ ONE MODULAR JACK ASSEMBLY PER POLYBAG.
- △ USE OF STRAIN RELIEF IS OPTIONAL.
- △ REFER TO 408-8858 FOR TERMINATION INSTRUCTIONS USING SL SERIES TOOL TERMINATION. REFER TO 408-8411 FOR TERMINATION INSTRUCTIONS USING 110 PUNCH DOWN TOOL.
- △ TWENTY-FIVE MODULAR JACKS PER POLYBAG.



ALPINE WHITE	3-1375187-3
ELECTRIC IVORY	3-1375187-1
VIOLET	3-1375187-40
GREEN	2-1375187-5
YELLOW	2-1375187-8
RED	2-1375187-7
ORANGE	2-1375187-9
NEMA GRAY	2-1375187-4
WHITE	2-1375187-3
BLACK	2-1375187-2
LIGHT ALMOND	2-1375187-1
ALPINE WHITE	1-1375187-3
ELECTRIC IVORY	1-1375187-1
VIOLET	1-1375187-40
GREEN	1375187-9
YELLOW	1375187-8
RED	1375187-7
ORANGE	1375187-6
NEMA GRAY	1375187-5
WHITE	1375187-4
BLACK	1375187-2
LIGHT ALMOND	1375187-1

DATE	09/00/07	BY	DMAY11
DESCRIPTION	ASSEMBLY, SL 110 JACK, CAT 6 DUST COVER		
REVISED PER	ECC-11-02003	DATE	11/02/07
BY	DMAY11	INITIALS	DM