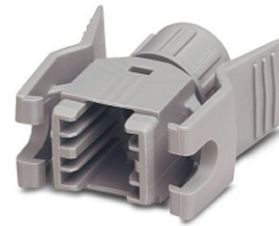


## VS-08-T-RJ45/IP 20


Order No.: 1688638

<http://eshop.phoenixcontact.de/phoenix/treeViewClick.do?UID=1688638>

RJ45 sleeve housing IP20, for pin insert VS-08-ST-RJ45, with push-pull interlocking for panel mounting frames, for cable cross section 5.0 mm ... 6.5 mm

### Ethernet

#### Commercial data

GTIN (EAN)	
sales group	D510
Pack	5 pcs.
Customs tariff	85472000
Catalog page information	Page 168 (PC-2007)

#### Product notes

WEEE/RoHS-compliant since:  
01/01/2003



<http://www.download.phoenixcontact.com>  
Please note that the data given here has been taken from the online catalog. For comprehensive information and data, please refer to the user documentation. The General Terms and Conditions of Use apply to Internet downloads.

#### Technical data

##### Mechanical characteristics

Insertion/withdrawal cycles	≥ 750
External cable diameter	5 mm ... 6.5 mm
Cable exit	Straight
Color	gray
Ambient temperature (operation)	-40 °C ... 80 °C

#### Material data

Inflammability class acc. to UL 94	V0
Housing material	PA
Degree of protection	IP20

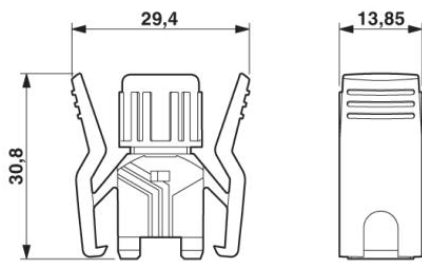
#### Accessories

Item	Designation	Description
1688573	VS-08-ST-RJ45	RJ45 pin insert, CAT5e, 8-pos., shielded, IDC connection method, for litz wires AWG 26 and solid wires AWG 26 ... 24

#### General

#### Diagrams/Drawings

Dimensioned drawing



RJ45 sleeve housing, IP20

**Address**

PHOENIX CONTACT Inc., USA  
586 Fulling Mill Road  
Middletown, PA 17057, USA  
Phone (800) 888-7388  
Fax (717) 944-1625  
<http://www.phoenixcon.com>



© 2011 Phoenix Contact  
Technical modifications reserved;