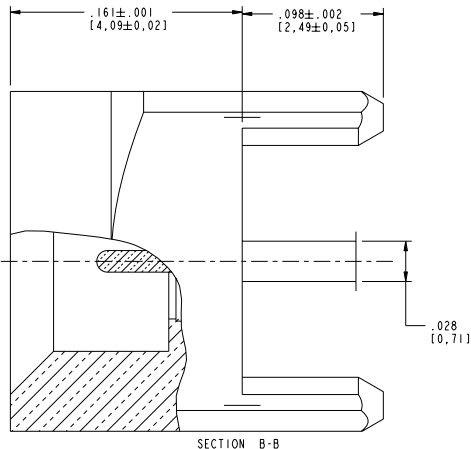
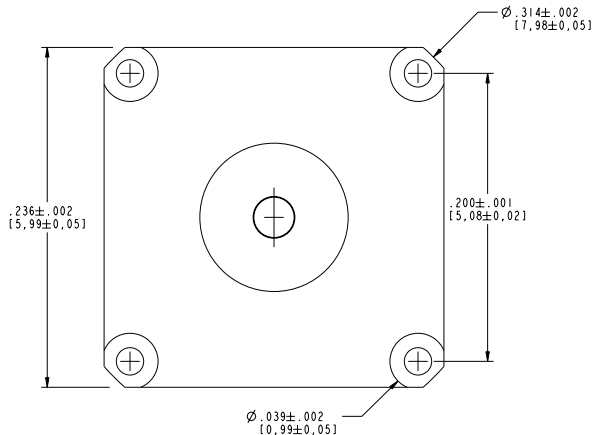



1. MATERIALS AND FINISHES:
  - A. BODY - BRASS, GOLD PLATING, .000030 [0.8] THICK OVER COPPER
  - CONTACT - BRASS, GOLD PLATING, .000030 [0.8] THICK OVER COPPER
  - INSULATOR - PEEK OR LCP
2. ELECTRICAL:
  - A. IMPEDANCE: 50 OHM
  - B. FREQUENCY RANGE: DC - 6 GHz
  - C. VSWR (RETURN LOSS): 1.10 (26.4 dB), MAX, DC-2GHz  
1.22 (20 dB), MAX, 2-6GHz
  - D. DIELECTRIC WITHSTANDING VOLTAGE: 500 VRMS, MIN.
3. PHYSICAL:
  - A. DURABILITY: 500 CYCLES MIN.
  - B. ENGAGEMENT FORCE: 2 LB [9 N] MAX
  - C. DIS-ENGAGEMENT FORCE: .5 LB [2.2 N] MIN
  - D. INNER CONTACT RETENTION FORCE: 1.5 LB [7 N] MIN
  - E. TEMPERATURE RANGE: -65° C TO 165° C
4. PACKAGING:
  - A. QUANTITY: SINGLE PACK
  - B. MARKING:
    - AMPHENOL
    - SMP-MSCM-PCT
    - DATE CODE
    - QTY



**CUSTOMER OUTLINE DRAWING**  
ALL OTHER SHEETS ARE FOR INTERNAL USE ONLY

UNLESS OTHERWISE SPECIFIED, DIMENSIONS ARE IN INCHES AND TOLERANCES ARE: 2 PLACE DECIMAL      3 PLACE DECIMAL ±.015 (±.381 mm)      ±.005 (±.127 mm)		MATERIAL	DRAWN	DATE	TITLE	 Amphenol Corporation Communication and Network Products Division Danbury, CT U.S.A. 06810 SCALE: 15:01    SHEET 2 OF 2
NOTICE - These drawings, specifications, or other data (1) are, and remain the property of Amphenol Corp. (2) shall be returned upon request; and (3) are confidential and not to be disclosed to any person other than those to whom they are given by Amphenol Corp. The furnishing of these drawings, specifications, or other data by Amphenol Corp., or to any other person to anyone for any purpose is not to be regarded by implication or otherwise in any manner licensing, granting rights or permitting such holder or any other person to manufacture, use or sell any design, process or design, product or otherwise, that may in any way be related to or disclosed by said drawings, specifications, or other data.		REFERENCE	ENGINEER	DATE	SMP MALE, PIN CONTACT	
		EAR# 283	M. HOYACK	28-Aug-01	PCB RECEPTACLE	
		GEN# ASYS5-SMP			CATCHER'S MITT	
		615X-1732	APPROVED	DATE		
		CAD FILE	CODE ID	DWG SIZE	DRAWING NO.	REV
		1:SMP/SMP-MSCM-PCT	74868	B	SMP-MSCM-PCT	02