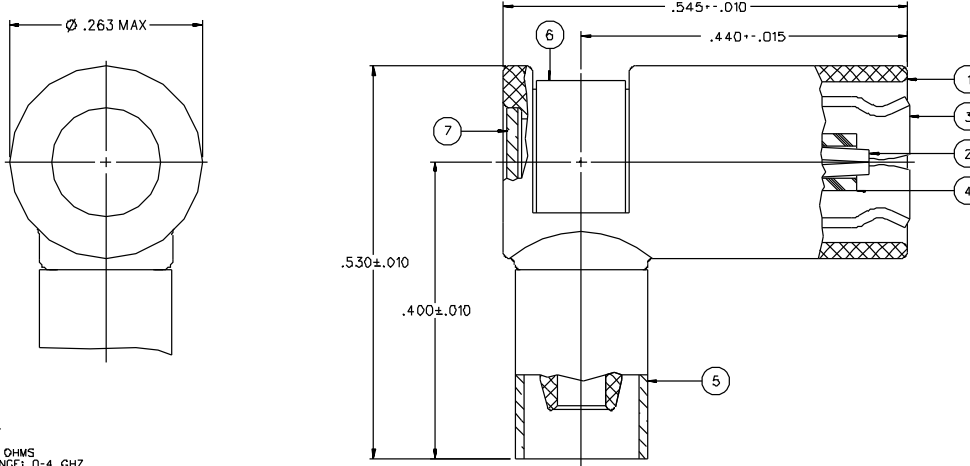


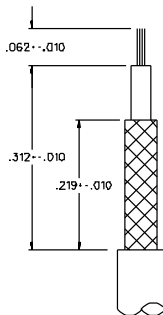
PART NUMBER	ITEM ①	ITEM ②	ITEM ③	ITEM ④	ITEM ⑤	ITEM ⑥	ITEM ⑦
131-1404-101	BODY ZINC GOLD PL .00001 MIN OVER NICKEL PL .00015 MIN OVER COPPER PL .0005 MIN	CONTACT BERYLLIUM COPPER GOLD PL .00003 MIN OVER NICKEL PL .00005 MIN OVER COPPER PL .00005 MIN	INTERFACE BERYLLIUM COPPER GOLD PL .00003 MIN OVER NICKEL PL .00005 MIN OVER COPPER PL .00005 MIN	INSULATOR TEFLON	SLEEVE COPPER GOLD PL .00001 MIN OVER NICKEL PL .00005 MIN OVER COPPER PL .00005 MIN	COVER RING PHOSPHOR BRONZE GOLD PL .00001 MIN OVER NICKEL PL .00005 MIN OVER COPPER PL .00005 MIN	END CAP BRASS GOLD PL .00001 MIN OVER NICKEL PL .00005 MIN OVER COPPER PL .00005 MIN
131-1404-106	BODY ZINC NICKEL PL .00015 MIN OVER COPPER PL .0005 MIN	CONTACT BERYLLIUM COPPER GOLD PL .00003 MIN OVER NICKEL PL .00005 MIN OVER COPPER PL .00005 MIN	INTERFACE BERYLLIUM COPPER GOLD PL .00003 MIN OVER NICKEL PL .00005 MIN OVER COPPER PL .00005 MIN	INSULATOR TEFLON	SLEEVE COPPER NICKEL PL .0001 MIN OVER COPPER PL .00005 MIN	COVER RING PHOSPHOR BRONZE NICKEL PL .0001 MIN OVER COPPER PL .00005 MIN	END CAP BRASS NICKEL PL .0001 MIN OVER COPPER PL .00005 MIN
131-1404-116	BODY ZINC NICKEL PL .00015 MIN OVER COPPER PL .0005 MIN	CONTACT BERYLLIUM COPPER GOLD PL .00003 MIN OVER NICKEL PL .00005 MIN OVER COPPER PL .00005 MIN	INTERFACE BERYLLIUM COPPER NICKEL PL .0001 MIN OVER COPPER PL .00005 MIN	INSULATOR TEFLON	SLEEVE COPPER NICKEL PL .0001 MIN OVER COPPER PL .00005 MIN	COVER RING PHOSPHOR BRONZE NICKEL PL .0001 MIN OVER COPPER PL .00005 MIN	END CAP BRASS NICKEL PL .0001 MIN OVER COPPER PL .00005 MIN



NOTES:

1. SPECIFICATIONS:

- IMPEDANCE: 50 OHMS
- FREQUENCY RANGE: 0-4 GHZ
- VSWR: 1.35±.04 F (F IN GHZ) (50 OHM CABLE ONLY)
- WORKING VOLTAGE: 335 VRMS MAX AT SEA LEVEL
- DIELECTRIC WITHSTANDING VOLTAGE: 1000 VRMS MIN AT SEA LEVEL
- INSULATION RESISTANCE: 1000 MEGOHM MIN
- CONTACT RESISTANCE:
 - CENTER CONTACT - INITIAL 12 MILLIOHM MAX, AFTER ENVIRONMENTAL 16 MILLIOHM MAX
 - OUTER CONDUCTOR - GOLD PLATED INITIAL 3 MILLIOHM MAX, AFTER ENVIRONMENTAL 1.5 MILLIOHM MAX
 - NICKEL PLATED INITIAL 2.5 MILLIOHM MAX, AFTER ENVIRONMENTAL 3.5 MILLIOHM MAX
- BRAID TO BODY - 1 MILLIOHM MAX (GOLD PLATED), AFTER ENVIRONMENTAL NOT APPLICABLE
- 2.5 MILLIOHM MAX (NICKEL PLATED), AFTER ENVIRONMENTAL NOT APPLICABLE
- CORONA LEVEL: 250 VOLTS MIN AT 70,000 FEET
- INSERTION LOSS: .60 DB MAX AT 1.5 GHZ (50 OHM CABLE ONLY)
- RF LEAKAGE: -.55 DB MIN AT 7.5 GHZ (50 OHM CABLE ONLY)
- RF HIGH POTENTIAL WITHSTANDING VOLTAGE: 700 VRMS MIN AT 4 AND 7 MHZ
- MECHANICAL:
 - ENGAGE/DISENGAGE FORCE: INITIAL 14 LBS MAX, AFTER DURABILITY 14 LBS MAX
 - ENGAGEMENT/2 LBS MIN DISENGAGEMENT
 - MATING TORQUE: NOT APPLICABLE
 - COUPLING PROOF TORQUE: NOT APPLICABLE
 - COUPLING NUT RETENTION: NOT APPLICABLE
 - CONTACT RETENTION: 4 LBS MIN AXIAL FORCE
 - CABLE ACCEPTABILITY: RG 316/U DOUBLE SHIELDED, RG 179 DOUBLE SHIELDED, RG 188/U DOUBLE SHIELDED, RG 187 DOUBLE SHIELDED
 - CABLE HEX CRIMP SIZE: .151
 - CABLE RETENTION: 20 LBS MIN OR CABLE BREAKING STRENGTH
 - DURABILITY: 500 CYCLES MIN
- ENVIRONMENTAL:
 - (MEETS OR EXCEEDS THE APPLICABLE PARAGRAPH OF MIL-C-39012)
 - THERMAL SHOCK: MIL-STD-202, METHOD 107, CONDITION B
 - OPERATING TEMPERATURE: -65 DEG C TO 165 DEG C
 - CORROSION: MIL-STD-202, METHOD 101, CONDITION B
 - SHOCK: MIL-STD-202, METHOD 213, CONDITION B
 - VIBRATION: MIL-STD-202, METHOD 204, CONDITION B



CABLE STRIP DIMENSIONS

DRAWING NO.
C - 131-1404-101/120

0 REVISIONS

CHANGED: REVISED AND REDRAWN.
WAS "D" SIZE DATED 6-17-86.
BODY NICKEL PL .00015 WAS .0003
3 8-3-90 1 8-7-90 8-7-90
ECO 24807

VERSION UPDATE

4 6-23-92 R 1 1 1 1 7-13-92
H 1 1 1 1 ECO 41071
ADDED: (50 OHM CABLE ONLY) TO
VSWR, INSERTION LOSS AND RF LEAK
SPECS. "AFTER ENVIRONMENTAL NOT
APPLICABLE" TO BRAID TO BODY, RG
179 DS AND RG 187 DS TO CABLE.
ACCEPTABILITY

VERSION UPDATE

5 3-29-93 R 1 1 1 1 4-14-93
H 1 1 1 1 ECO 41742
REVISION NUMBER FOLLOWED BY AN ALPHA
CHARACTER INDICATES DRAWING CHANGE.
CAUTION ON PART NUMBER ADDITION ONLY.

VERSION UPDATE

5a 4-22-94 R 1 1 1 1 5-10-94
H 1 1 1 1 ECN 42370

VERSION UPDATE

6 5-1-95 R 1 1 1 1
H 1 1 1 1 ECN 43333

CUSTOMER DRAWING

THIS DRAWING TO BE INTERPRETED
PER ANSI Y 14.5M - 1982

"μSTATION"

COMPANY CONFIDENTIAL

TOLERANCE UNLESS OTHERWISE SPECIFIED	DRAWN BY EJ	DATE 8-3-90	299 Johnson Ave. P.O. Box 1732 Waseca, MN 56093-0832
DECIMALS mm	CHECKED BY	DATE	
.XX			TITLE PLUG ASSEMBLY RA CABLED SMB, 50 OHM, RG 316 DS
.XXX			CODE NO.
MATERIAL	APPROVED BY RJB	DATE 7-10-86	DRAWING NO. C - 131-1404-101/120
FINISH	APPROVED BY	DATE	SCALE 10:1 U/N INCH SHEET 2 OF 2
	RELEASE DATE	8-7-90 (7-14-86)	