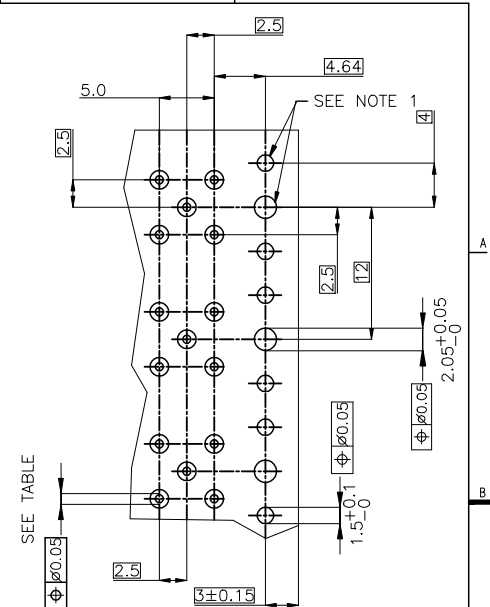
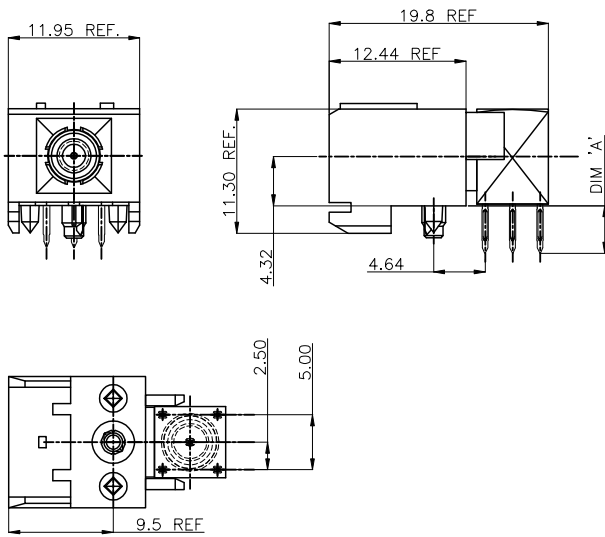


| PRODUCT NO | PCB THICKNES | DIM A | NOTES |
|------------|--------------|-------|-------|
| 63721-101 | 1.6 & 2.4 | 4.19 | 4 |
| 63721-102 | 1.6 & 2.4 | 4.19 | 2 & 4 |



RECOMMENDED HOLE PATTERN, COMPONENT SIDE.

- NOTES:
- INDICATED HOLES ARE TO BE UNPLATED
 - COMPONENTS SUPPLIED UNASSEMBLED
 - SEE PRINT 10026911 FOR COAX. PLATING SPEC.
 - ADD "LF" SUFFIX AT THE END OF PART NUMBER FOR LEAD FREE OPTION.
 - THIS PRODUCT MEETS EUROPEAN UNION DIRECTIVES AND OTHER COUNTRY REGULATION AS DESCRIBED IN GS-22-008.
 - THE HOUSING WILL WITHSTAND EXPOSURE TO 260°C PEAK TEMPERATURE FOR 15 SECONDS IN A WAVE SOLDER APPLICATION WITH A 1.5mm MINIMUM THICK CIRCUIT BOARD OR FOR 20 SECONDS IN A CONVECTION, INFRA-RED OR VAPOR PHASE REFLOW OVEN. SEE APPLICATION NOTES/PROCEDURES IF THEY ARE AVAILABLE.

| PRESS FIT HOLES | |
|-----------------------------|--------------------------|
| HOLE DIAMETER AFTER PLATING | 0.65 - 0.80 |
| DRILLED HOLE | 0.81 - 0.86 (0.85 DRILL) |
| COPPER PLATING | 0.025 MIN |
| TIN PLATING | 0.005 - 0.015 |

| | | | | | |
|---------------------------------------|----------|---------|-----------|------------|----------------------|
| mat'l. code | | surface | tolerance | projection | product family |
| ISO 1902 | | ISO 406 | ISO 1901 | MM | METRAL (tm) |
| tolerances unless otherwise specified | | | | | |
| ltr | ecr no | dr | date | angles | linear |
| A | V81487 | GCR | 9/03/98 | .X±0.3 | |
| B | V94348 | HTB | 11/16/99 | .XX±0.13 | |
| C | M06-0288 | MNR | 7/27/06 | .XXX±0.050 | scale 1:1 |
| D | M07-0101 | MHT | 2/09/07 | dr | M. FETROW 7/16/98 |
| E | M09-0054 | MHT | 3/26/09 | eng | C. PENDLETON 9/03/98 |
| | | | | chr | C. PENDLETON 9/03/98 |
| | | | | appd | C. PENDLETON 9/03/98 |
| sheet | revision | E | | | |
| index | sheet | 1 | | | |

RIGHT ANGLE
COAX ASSEMBLY

63721

sheet 1 of 1 size A3

type Product Customer Drawing