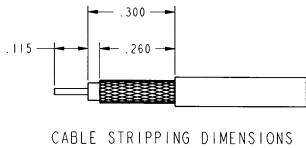
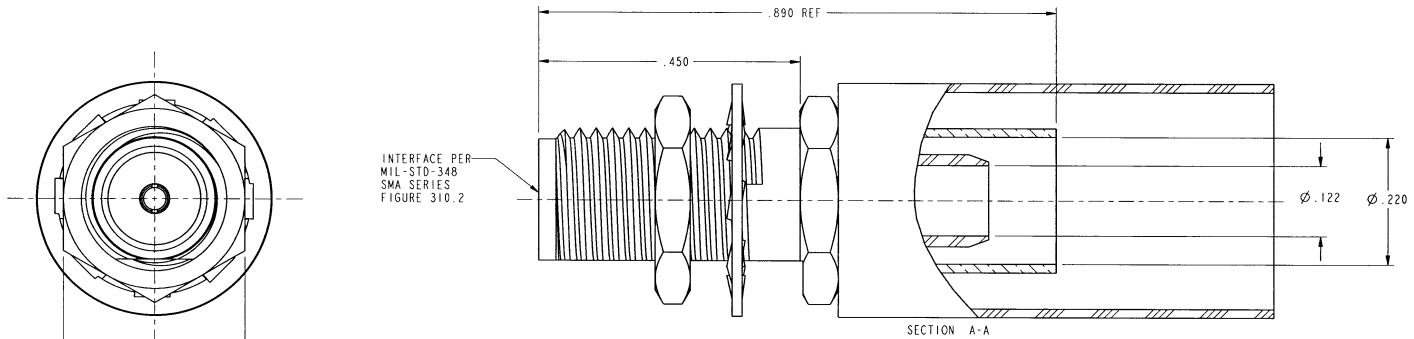
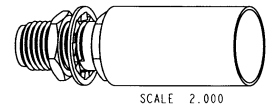


NOTES:

- DO NOT SCALE THIS DRAWING.
- MATERIAL AND FINISH:
 CONTACT: BERYLLIUM COPPER, GOLD PLATED
 FERRULE: ANNEALED COPPER, NICKEL PLATED
 INSULATOR: PTFE
 OTHER METAL PARTS: STAINLESS STEEL, PASSIVATED
- CRIMP USING TOOL 227-944, DIE SET 227-1221-11, CAVITY "A" (.213 HEX).

901-10021-ISF		REVISIONS			
DRAWING NO.	REV	DESCRIPTION	DATE	ECO	APPR
THIRD ANGLE PROJ.	A	OFFICIAL ENG. RELEASE TO MFG.	12/16/99	43202	PB177A



CUSTOMER OUTLINE DRAWING
FOR REFERENCE ONLY

UNLESS OTHERWISE SPECIFIED, DIMENSIONS ARE IN INCHES AND TOLERANCES ARE: 2 PLACE DECIMAL 3 PLACE DECIMAL ±.015 (0.381 mm) ±.005 (0.127 mm) ANGLES ±.1°	MATERIAL REFERENCE EAR 102-967285 1 615A-1544-100 GEN# ASSYF30_SMA	DRAWN P. BRENZEL DATE 9 DEC 99	TITLE SMA BULKHEAD JACK FOR RG-55/U CABLE	Amphenol Amphenol Corporation Communication and Network Products Division Danbury, CT U.S.A. 06810 SCALE: 6.0:1 SHEET 2 OF 2		
		ENGINEER P. BRENZEL DATE 9 DEC 99				
NOTICE: These drawings, specifications, or other data (1) are, and remain the property of Amphenol Corp. (2) must be returned upon request; and (3) are confidential and not to be disclosed to any person other than those to whom they are given by Amphenol Corp. The furnishing of these drawings, specifications, or other data by Amphenol Corp., or to any other person for any purpose is not to be regarded by implication or otherwise in any manner licensing, granting rights or permitting such holder or any other person to manufacture, use or sell any product, process or design, patented or otherwise, that may in any way be related to or disclosed by said drawings, specifications, or other data.	APPROVED DATE 12/17/99	CAD FILE I:\SMA\901-10021-ISF	CODE ID 74868	DWG SIZE B	DRAWING NO. 901-10021-ISF	REV A