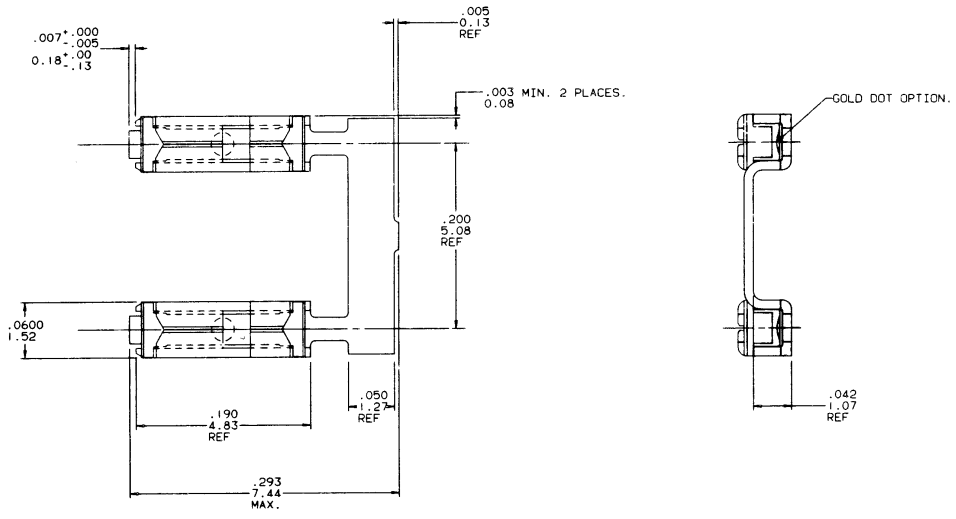


PRODUCT NO	TERMINAL BODY	TERMINAL SPRING
75800-001	1/4 HARD BRASS WITH GOLD FLASH AND 40 <sup>u</sup> /1.02u Au IN CONTACT AREA.	.0048/.122 THICK HEAT TREATED BE-CU WITH GOLD FLASH.
75800-002	1/4 HARD BRASS WITH TIN-LEAD PLATING.	.0048/.122 THICK HEAT TREATED BE-CU WITH TIN PLATING.
75800-003	O B S O L E T E	
75800-004	1/4 HARD Cu Ni WITH .001/.03 MIN THICK GOLD DOT.	.0048/.122 THICK HEAT TREATED BE-CU WITH GOLD FLASH.

REVISIONS			
REV	DESCRIPTION	BY	DATE
A	RELEASE-REDRAW	JGS	5/6/91



SHEET INDEX		ISSUE A											CUSTOMER COPY		
SH NO 1		1											CODE IDENT 22526		
MODEL 1		DO NOT SCALE DRAWING		TOLERANCE UNLESS OTHERWISE NOTED		INCH/MM		MATERIAL		DR J. SHREINER		DATE 9/8/91		TITLE	
				LINEAR		.001/.01/.01-.3				ENGR M. HAHN		5/6/91		MINI JUMP TERMINAL .200 C.C.	
TABULATION SHEETS REQUIRED		YES NO		THIRD ANGLE PROJECTION		LINEAR		.0001/.0020/.0001-.051		FINISH		ENGR M. HAHN		5/6/91	
				INCH MM		ANGLES 0° ±2°				APPR M. HAHN		5/6/91		SCALE SIZE DWG NO CAD	
												20/1 D 75800		SHEET 1 OF 1	

NOTE: This drawing is the property of and contains proprietary designs of THE DUPONT COMPANY. No part of this drawing shall be used in any way without the written consent of DUPONT ELECTRONICS, New Cumberland, PA.

PDM: Rev:A STATUS:Released Printed: Dec 01, 2010