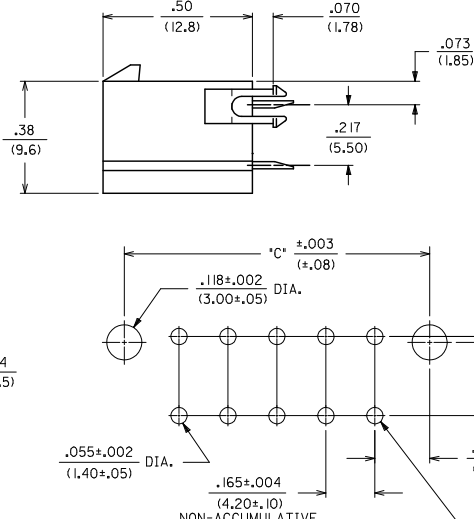
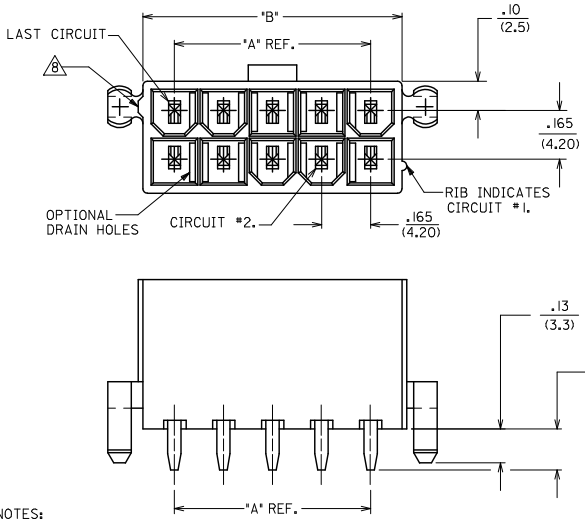


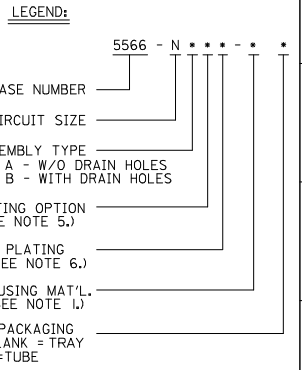
13 12 11 10 9 8 7 6 5 4 3 2 1



CIRCUIT SIZE	DIM. 'A'	DIM. 'B'	DIM. 'C'
2	—	.21 (5.4)	.370 (9.40)
4	.17 (4.2)	.38 (9.6)	.535 (13.66)
6	.33 (8.4)	.54 (13.8)	.701 (17.80)
8	.50 (12.6)	.71 (18.0)	.866 (22.00)
10	.66 (16.8)	.87 (22.2)	1.031 (26.20)
12	.83 (21.0)	1.04 (26.4)	1.197 (30.40)
14	.99 (25.2)	1.20 (30.6)	1.362 (34.60)
16	1.16 (29.4)	1.37 (34.8)	1.528 (38.80)
18	1.32 (33.6)	1.54 (39.0)	1.693 (43.00)
20	1.49 (37.8)	1.70 (43.2)	1.858 (47.20)
22	1.65 (42.0)	1.87 (47.4)	2.024 (51.40)
24	1.82 (46.2)	2.03 (51.6)	2.189 (55.60)

- NOTES:**
- HOUSING MATERIAL:
 BLANK - NYLON 6/6, U.L. 94V-2, COLOR: NATURAL.
 210 - NYLON 6/6, U.L. 94V-0, COLOR: NATURAL.
 BL - NYLON 6/6, U.L. 94V-2, COLOR: DYED BLACK.
 - TERMINAL MATERIAL: BRASS ALLOY 260
 - PART MATES WITH MINI-FIT JR. RECEPTACLE #5557.
 - PACKAGING: SEE CHARTS
 - MOUNTING OPTIONS:
 BLANK - NO MOUNTING (SEE SD-5566-NA AND -NB SERIES DWGS.)
 2 - PEG MOUNT
 - TERMINAL PLATING:
 BLANK - .00035/(.00090) MIN. TIN OVER
 .00020/(.00050) MIN. COPPER.
 *GS - .00030/(.00076) MIN. SELECT GOLD
 .000100/(.00254) MIN. SELECT MATTE TIN
 OVER .000050/(.00127) MIN. NICKEL OVERALL.
 *GS2 - .00015/(.00038) MIN. SELECT GOLD AND
 .000100/(.00254) MIN. SELECT MATTE TIN
 OVER .000050/(.00127) MIN. NICKEL OVERALL.
 S - .000100/(.00254) MIN. TIN
 OVER .000050/(.00127) MIN. NICKEL.
- *THE PRIMARY SHIPPING CARTON WILL BE LABELED *COMPLIANT TO RoHS DIRECTIVE 2002/95/EC AND ELV ANNEX II OF DIRECTIVE 2000/53/EC.*
 * CARTONS WITHOUT THIS LABEL MAY CONTAIN PRODUCT WITH TIN-LEAD PLATING.
- PRODUCT SPECIFICATION AND PROCESSING PARAMETERS: SEE PS-5556-001
 - ANTI-SHINGLING RIB MAY OR MAY NOT APPEAR ON HOUSINGS.
 - CONNECTORS ARE NOT TO BE MATED OR UNMATED WHILE CIRCUITS ARE LIVE.
 - PARTS ARE NOT DESIGNED FOR CURRENT SHARING.

RECOMMENDED HOLE LAYOUT FOR .070/(1.78) MAX. THICK P. C. BOARD
 VIEWED FROM COMPONENT SIDE



4	R2
3	R2
2	R2
1	R2
SHT.	REV.

REVISED NOTES 8 EC NO. UCP2008-1536 DRAWN: KLOSTERMEIER 2008/11/24 CHKD: BELL 2008/11/24 APPR: SMITH 2008/11/24	QUALITY SYMBOLS ▽=0 ▽=0	GENERAL TOLERANCES (UNLESS SPECIFIED): 4 PLACES ±.005 ±.005 3 PLACES ±.005 ±.015 2 PLACES ±.038 ±.015 1 PLACE ±.038 ±.005 ANGULAR ±1/2°		DIMENSION STYLE IN/MM DRAWN BY: RJF DATE: 8/19/87 CHECKED BY: GT DATE: 8/19/87 APPROVED BY: RAS DATE: 8/19/87		SCALE 1:1 DESIGN UNITS METRIC TITLE: MINI-FIT JR. VERTICAL HEADER ASSEMBLIES WITH MOUNTING PEGS			
		DRAFT WHERE APPLICABLE MUST REMAIN WITHIN DIMENSIONS		MATERIAL NO. SEE SHTS 2-4 SIZE C		DOCUMENT NO. SDA-5566-N*2*-* SHEET NO. 1 OF 4			
		MOLEX INCORPORATED						THIS DRAWING CONTAINS INFORMATION THAT IS PROPRIETARY TO MOLEX INCORPORATED AND SHOULD NOT BE USED WITHOUT WRITTEN PERMISSION	
		*THE PRIMARY SHIPPING CARTON WILL BE LABELED *COMPLIANT TO RoHS DIRECTIVE 2002/95/EC AND ELV ANNEX II OF DIRECTIVE 2000/53/EC.* * CARTONS WITHOUT THIS LABEL MAY CONTAIN PRODUCT WITH TIN-LEAD PLATING.							

	13	12	11	10	9	8	7	6	5	4	3	2	1
J	PLATING:	35 M.I. TIN	PLATING:	35 M.I. TIN	PLATING:	30 M.I. GOLD	PLATING:	30 M.I. GOLD	PLATING:	30 M.I. GOLD	PLATING:	30 M.I. GOLD	
	DRAIN HOLES:	WITHOUT DRAIN HOLES	DRAIN HOLES:	WITHOUT DRAIN HOLES	DRAIN HOLES:	WITHOUT DRAIN HOLES	DRAIN HOLES:	WITHOUT DRAIN HOLES	DRAIN HOLES:	WITHOUT DRAIN HOLES	DRAIN HOLES:	WITHOUT DRAIN HOLES	
	MTG. OPTION:	WITH PEGS	MTG. OPTION:	WITH PEGS	MTG. OPTION:	WITH PEGS	MTG. OPTION:	WITH PEGS	MTG. OPTION:	WITH PEGS	MTG. OPTION:	WITH PEGS	
	HOUSING MAT'L:	NYLON 6/6 94V-2 NATURAL	HOUSING MAT'L:	NYLON 6/6 94V-0 NATURAL	HOUSING MAT'L:	NYLON 6/6 94V-2 NATURAL	HOUSING MAT'L:	NYLON 6/6 94V-2 NATURAL	HOUSING MAT'L:	NYLON 6/6 94V-0 NATURAL	HOUSING MAT'L:	NYLON 6/6 94V-0 NATURAL	
	PACKAGING:	TRAY	PACKAGING:	TRAY	PACKAGING:	TRAY	PACKAGING:	TRAY	PACKAGING:	TRAY	PACKAGING:	TRAY	
I	PART NO.	ENG NO.	CKTS	PART NO.	ENG NO.	CKTS	PART NO.	ENG NO.	CKTS	PART NO.	ENG NO.	CKTS	
	39-29-9023	5566 -02A2	2	39-29-9027	5566 -02A2-2IO	2	39-29-9025	5566 -02A2GS	2	39-29-9029	5566 -02A2GS-2IO	2	
	39-29-9043	5566 -04A2	4	39-29-9047	5566 -04A2-2IO	4	39-29-9045	5566 -04A2GS	4	39-29-9049	5566 -04A2GS-2IO	4	
	39-29-9063	5566 -06A2	6	39-29-9067	5566 -06A2-2IO	6	39-29-9065	5566 -06A2GS	6	39-29-9069	5566 -06A2GS-2IO	6	
	39-29-9083	5566 -08A2	8	39-29-9087	5566 -08A2-2IO	8	39-29-9085	5566 -08A2GS	8	39-29-9089	5566 -08A2GS-2IO	8	
	39-29-9103	5566 -10A2	10	39-29-9107	5566 -10A2-2IO	10	39-29-9105	5566 -10A2GS	10	39-29-9109	5566 -10A2GS-2IO	10	
	39-29-9123	5566 -12A2	12	39-29-9127	5566 -12A2-2IO	12	39-29-9125	5566 -12A2GS	12	39-29-9129	5566 -12A2GS-2IO	12	
	39-29-9143	5566 -14A2	14	39-29-9147	5566 -14A2-2IO	14	39-29-9145	5566 -14A2GS	14	39-29-9149	5566 -14A2GS-2IO	14	
	39-29-9163	5566 -16A2	16	39-29-9167	5566 -16A2-2IO	16	39-29-9165	5566 -16A2GS	16	39-29-9169	5566 -16A2GS-2IO	16	
H	39-29-9183	5566 -18A2	18	39-29-9187	5566 -18A2-2IO	18	39-29-9185	5566 -18A2GS	18	39-29-9189	5566 -18A2GS-2IO	18	
	39-29-9203	5566 -20A2	20	39-29-9207	5566 -20A2-2IO	20	39-29-9205	5566 -20A2GS	20	39-29-9209	5566 -20A2GS-2IO	20	
	39-29-9223	5566 -22A2	22	39-29-9227	5566 -22A2-2IO	22	39-29-9225	5566 -22A2GS	22	39-29-9229	5566 -22A2GS-2IO	22	
	39-29-9243	5566 -24A2	24	39-29-9247	5566 -24A2-2IO	24	39-29-9245	5566 -24A2GS	24	39-29-9249	5566 -24A2GS-2IO	24	
	-	-	-	-	-	-	-	-	-	-	-	-	
	-	-	-	-	-	-	-	-	-	-	-	-	

G	PLATING:	35 M.I. TIN	PLATING:	35 M.I. TIN	PLATING:	30 M.I. GOLD	PLATING:	30 M.I. GOLD	PLATING:	30 M.I. GOLD	PLATING:	30 M.I. GOLD	
	DRAIN HOLES:	WITH DRAIN HOLES	DRAIN HOLES:	WITH DRAIN HOLES	DRAIN HOLES:	WITH DRAIN HOLES	DRAIN HOLES:	WITH DRAIN HOLES	DRAIN HOLES:	WITH DRAIN HOLES	DRAIN HOLES:	WITH DRAIN HOLES	
	MTG. OPTION:	WITH PEGS	MTG. OPTION:	WITH PEGS	MTG. OPTION:	WITH PEGS	MTG. OPTION:	WITH PEGS	MTG. OPTION:	WITH PEGS	MTG. OPTION:	WITH PEGS	
	HOUSING MAT'L:	NYLON 6/6 94V-2 NATURAL	HOUSING MAT'L:	NYLON 6/6 94V-0 NATURAL	HOUSING MAT'L:	NYLON 6/6 94V-2 NATURAL	HOUSING MAT'L:	NYLON 6/6 94V-2 NATURAL	HOUSING MAT'L:	NYLON 6/6 94V-0 NATURAL	HOUSING MAT'L:	NYLON 6/6 94V-0 NATURAL	
	PACKAGING:	TRAY	PACKAGING:	TRAY	PACKAGING:	TRAY	PACKAGING:	TRAY	PACKAGING:	TRAY	PACKAGING:	TRAY	
F	PART NO.	ENG NO.	CKTS	PART NO.	ENG NO.	CKTS	PART NO.	ENG NO.	CKTS	PART NO.	ENG NO.	CKTS	
	39-29-9022	5566 -02B2	2	39-29-9026	5566 -02B2-2IO	2	39-29-9024	5566 -02B2GS	2	39-28-9028	5566 -02B2GS-2IO	2	
	39-29-9042	5566 -04B2	4	39-29-9046	5566 -04B2-2IO	4	39-29-9044	5566 -04B2GS	4	39-28-9048	5566 -04B2GS-2IO	4	
	39-29-9062	5566 -06B2	6	39-29-9066	5566 -06B2-2IO	6	39-29-9064	5566 -06B2GS	6	39-28-9068	5566 -06B2GS-2IO	6	
	39-29-9082	5566 -08B2	8	39-29-9086	5566 -08B2-2IO	8	39-29-9084	5566 -08B2GS	8	39-28-9088	5566 -08B2GS-2IO	8	
	39-29-9102	5566 -10B2	10	39-29-9106	5566 -10B2-2IO	10	39-29-9104	5566 -10B2GS	10	39-28-9108	5566 -10B2GS-2IO	10	
	39-29-9122	5566 -12B2	12	39-29-9126	5566 -12B2-2IO	12	39-29-9124	5566 -12B2GS	12	39-28-9128	5566 -12B2GS-2IO	12	
E	39-29-9142	5566 -14B2	14	39-29-9146	5566 -14B2-2IO	14	39-29-9144	5566 -14B2GS	14	39-28-9148	5566 -14B2GS-2IO	14	
	39-29-9162	5566 -16B2	16	39-29-9166	5566 -16B2-2IO	16	39-29-9164	5566 -16B2GS	16	39-28-9168	5566 -16B2GS-2IO	16	
	39-29-9182	5566 -18B2	18	39-29-9186	5566 -18B2-2IO	18	39-29-9184	5566 -18B2GS	18	39-28-9188	5566 -18B2GS-2IO	18	
	39-29-9202	5566 -20B2	20	39-29-9206	5566 -20B2-2IO	20	39-29-9204	5566 -20B2GS	20	39-28-9208	5566 -20B2GS-2IO	20	
	39-29-9222	5566 -22B2	22	39-29-9226	5566 -22B2-2IO	22	39-29-9224	5566 -22B2GS	22	39-28-9228	5566 -22B2GS-2IO	22	
	39-29-9242	5566 -24B2	24	39-29-9246	5566 -24B2-2IO	24	39-29-9244	5566 -24B2GS	24	39-28-9248	5566 -24B2GS-2IO	24	
	-	-	-	-	-	-	-	-	-	-	-	-	
	-	-	-	-	-	-	-	-	-	-	-	-	

D													
C													
B													
A													

SEE SHEET 1 EC NO: UCP2009-1336 DRWN: JKLOSTERMEIER 2008/11/24 CHKD: JBEL 2008/11/24 APPR: SMITH 2008/11/24 R2	QUALITY SYMBOLS ▽=0 ▽=0	GENERAL TOLERANCES (UNLESS SPECIFIED): 4 PLACES ±.000 ±.000 3 PLACES ±.000 ±.015 2 PLACES ±.030 ±.015 1 PLACE ±.030 ±.000 ANGULAR ±1/2°	DIMENSION STYLE IN/MM DRAWN BY: R/JF DATE: 8/19/87 CHECKED BY: DATE: 8/19/87 APPROVED BY: RAS DATE: 8/19/87	SCALE: 1:1 DESIGN UNITS: METRIC THIRD ANGLE PROJECTION	TITLE: MINI-FIT JR. VERT HEADER ASSEMBLIES WITH MOUNTING PEGS MOLEX INCORPORATED	MATERIAL NO.: DOCUMENT NO.: SDA-5566-N*2*-* SHEET NO.: 2
		DRAFT WHERE APPLICABLE MUST REMAIN WITHIN DIMENSIONS	SEE CHART	THIS DRAWING CONTAINS INFORMATION THAT IS PROPRIETARY TO MOLEX INCORPORATED AND SHOULD NOT BE USED WITHOUT WRITTEN PERMISSION		

13	12	11	10	9	8	7	6	5	4	3	2	1			
PLATING: 100 M.I. TIN DRAIN HOLES: WITHOUT DRAIN HOLES MTG. OPTION: WITH PEGS HOUSING MAT'L: NYLON 6/6 94V-2 NATURAL PACKAGING: TRAY				PLATING: 100 M.I. TIN DRAIN HOLES: WITHOUT DRAIN HOLES MTG. OPTION: WITH PEGS HOUSING MAT'L: NYLON 6/6 94V-0 NATURAL PACKAGING: TRAY				PLATING: 15 M.I. SELECT GOLD DRAIN HOLES: WITHOUT DRAIN HOLES MTG. OPTION: WITH PEGS HOUSING MAT'L: NYLON 6/6 94V-2 NATURAL PACKAGING: TRAY				PLATING: 15 M.I. SELECT GOLD DRAIN HOLES: WITHOUT DRAIN HOLES MTG. OPTION: WITH PEGS HOUSING MAT'L: NYLON 6/6 94V-0 NATURAL PACKAGING: TRAY			
PART NO. ENG NO. CKTS 39-30-6025 5566 -02A2S 2 39-30-6045 5566 -04A2S 4 39-30-6065 5566 -06A2S 6 39-30-6085 5566 -08A2S 8 39-30-6105 5566 -10A2S 10 39-30-6125 5566 -12A2S 12 39-30-6145 5566 -14A2S 14 39-30-6165 5566 -16A2S 16 39-30-6185 5566 -18A2S 18 39-30-6205 5566 -20A2S 20 39-30-6225 5566 -22A2S 22 39-30-6245 5566 -24A2S 24 - - - - - -				PART NO. ENG NO. CKTS 39-30-6026 5566 -02A2S-2I0 2 39-30-6046 5566 -04A2S-2I0 4 39-30-6066 5566 -06A2S-2I0 6 39-30-6086 5566 -08A2S-2I0 8 39-30-6106 5566 -10A2S-2I0 10 39-30-6126 5566 -12A2S-2I0 12 39-30-6146 5566 -14A2S-2I0 14 39-30-6166 5566 -16A2S-2I0 16 39-30-6186 5566 -18A2S-2I0 18 39-30-6206 5566 -20A2S-2I0 20 39-30-6226 5566 -22A2S-2I0 22 39-30-6246 5566 -24A2S-2I0 24 - - - - - -				PART NO. ENG NO. CKTS 39-30-0026 5566 -02A2GS2 2 39-30-0046 5566 -04A2GS2 4 39-30-0066 5566 -06A2GS2 6 39-30-0086 5566 -08A2GS2 8 39-30-0106 5566 -10A2GS2 10 39-30-0126 5566 -12A2GS2 12 39-30-0146 5566 -14A2GS2 14 39-30-0166 5566 -16A2GS2 16 39-30-0186 5566 -18A2GS2 18 39-30-0206 5566 -20A2GS2 20 39-30-0226 5566 -22A2GS2 22 39-30-0246 5566 -24A2GS2 24 - - - - - -				PART NO. ENG NO. CKTS 39-30-0027 5566 -02A2GS2-2I0 2 39-30-0047 5566 -04A2GS2-2I0 4 39-30-0067 5566 -06A2GS2-2I0 6 39-30-0087 5566 -08A2GS2-2I0 8 39-30-0107 5566 -10A2GS2-2I0 10 39-30-0127 5566 -12A2GS2-2I0 12 39-30-0147 5566 -14A2GS2-2I0 14 39-30-0167 5566 -16A2GS2-2I0 16 39-30-0187 5566 -18A2GS2-2I0 18 39-30-0207 5566 -20A2GS2-2I0 20 39-30-0227 5566 -22A2GS2-2I0 22 39-30-0247 5566 -24A2GS2-2I0 24 - - - - - -			
PLATING: 100 M.I. TIN DRAIN HOLES: WITH DRAIN HOLES MTG. OPTION: WITH PEGS HOUSING MAT'L: NYLON 6/6 94V-2 NATURAL PACKAGING: TRAY				PLATING: 100 M.I. TIN DRAIN HOLES: WITH DRAIN HOLES MTG. OPTION: WITH PEGS HOUSING MAT'L: NYLON 6/6 94V-0 NATURAL PACKAGING: TRAY				PLATING: 15 M.I. SELECT GOLD DRAIN HOLES: WITH DRAIN HOLES MTG. OPTION: WITH PEGS HOUSING MAT'L: NYLON 6/6 94V-2 NATURAL PACKAGING: TRAY				PLATING: 15 M.I. SELECT GOLD DRAIN HOLES: WITH DRAIN HOLES MTG. OPTION: WITH PEGS HOUSING MAT'L: NYLON 6/6 94V-0 NATURAL PACKAGING: TRAY			
PART NO. ENG NO. CKTS 39-30-6027 5566 -02B2S 2 39-30-6047 5566 -04B2S 4 39-30-6067 5566 -06B2S 6 39-30-6087 5566 -08B2S 8 39-30-6107 5566 -10B2S 10 39-30-6127 5566 -12B2S 12 39-30-6147 5566 -14B2S 14 39-30-6167 5566 -16B2S 16 39-30-6187 5566 -18B2S 18 39-30-6207 5566 -20B2S 20 39-30-6227 5566 -22B2S 22 39-30-6247 5566 -24B2S 24 - - - - - -				PART NO. ENG NO. CKTS 39-30-6028 5566 -02B2S-2I0 2 39-30-6048 5566 -04B2S-2I0 4 39-30-6068 5566 -06B2S-2I0 6 39-30-6088 5566 -08B2S-2I0 8 39-30-6108 5566 -10B2S-2I0 10 39-30-6128 5566 -12B2S-2I0 12 39-30-6148 5566 -14B2S-2I0 14 39-30-6168 5566 -16B2S-2I0 16 39-30-6188 5566 -18B2S-2I0 18 39-30-6208 5566 -20B2S-2I0 20 39-30-6228 5566 -22B2S-2I0 22 39-30-6248 5566 -24B2S-2I0 24 - - - - - -				PART NO. ENG NO. CKTS 39-30-0028 5566 -02B2GS2 2 39-30-0048 5566 -04B2GS2 4 39-30-0068 5566 -06B2GS2 6 39-30-0088 5566 -08B2GS2 8 39-30-0108 5566 -10B2GS2 10 39-30-0128 5566 -12B2GS2 12 39-30-0148 5566 -14B2GS2 14 39-30-0168 5566 -16B2GS2 16 39-30-0188 5566 -18B2GS2 18 39-30-0208 5566 -20B2GS2 20 39-30-0228 5566 -22B2GS2 22 39-30-0248 5566 -24B2GS2 24 - - - - - -				PART NO. ENG NO. CKTS 39-30-0029 5566 -02B2GS2-2I0 2 39-30-0049 5566 -04B2GS2-2I0 4 39-30-0069 5566 -06B2GS2-2I0 6 39-30-0089 5566 -08B2GS2-2I0 8 39-30-0109 5566 -10B2GS2-2I0 10 39-30-0129 5566 -12B2GS2-2I0 12 39-30-0149 5566 -14B2GS2-2I0 14 39-30-0169 5566 -16B2GS2-2I0 16 39-30-0189 5566 -18B2GS2-2I0 18 39-30-0209 5566 -20B2GS2-2I0 20 39-30-0229 5566 -22B2GS2-2I0 22 39-30-0249 5566 -24B2GS2-2I0 24 - - - - - -			

REV. PACKAGING EC NO. UCP2009-1536 DRWN: JKLUSTEIMER 2008/11/24 CHKD: J BELL 2008/11/24 APPR: S MITH 2008/11/24	QUALITY SYMBOLS $\nabla=0$ $\triangle=0$	GENERAL TOLERANCES (UNLESS SPECIFIED): <table border="1"> <tr> <th></th> <th>mm</th> <th>INCH</th> </tr> <tr> <td>4 PLACES</td> <td>±.15</td> <td>±.005</td> </tr> <tr> <td>3 PLACES</td> <td>±.05</td> <td>±.002</td> </tr> <tr> <td>2 PLACES</td> <td>±.03</td> <td>±.001</td> </tr> <tr> <td>1 PLACE</td> <td>±.03</td> <td>±.001</td> </tr> <tr> <td colspan="3">ANGULAR ±1/2°</td> </tr> </table>		mm	INCH	4 PLACES	±.15	±.005	3 PLACES	±.05	±.002	2 PLACES	±.03	±.001	1 PLACE	±.03	±.001	ANGULAR ±1/2°			DIMENSION STYLE: IN/MM DRAWN BY: LEM DATE: 2/17/99 CHECKED BY: MAB DATE: 2/17/99 APPROVED BY: RRE DATE: 2/17/99 MATERIAL NO.: DOCUMENT NO.: SDA-5566-N*2*-*	SCALE: 1:1 DESIGN UNITS: METRIC THIRD ANGLE PROJECTION	TITLE: MINI-FIT JR VERT. HEADER ASSEMBLIES WITH MOUNTING PEGS MOLEX INCORPORATED SHEET NO.: 3
		mm	INCH																				
	4 PLACES	±.15	±.005																				
	3 PLACES	±.05	±.002																				
2 PLACES	±.03	±.001																					
1 PLACE	±.03	±.001																					
ANGULAR ±1/2°																							
DRAFT WHERE APPLICABLE SEE CHART MUST REMAIN WITHIN DIMENSIONS				THIS DRAWING CONTAINS INFORMATION THAT IS PROPRIETARY TO MOLEX INCORPORATED AND SHOULD NOT BE USED WITHOUT WRITTEN PERMISSION																			
R2																							
SIZE C																							

	13	12	11	10	9	8	7	6	5	4	3	2	1		
PLATING:	35 M.I. TIN			PLATING:	35 M.I. TIN			PLATING:				PLATING:			
DRAIN HOLES:	WITHOUT DRAIN HOLES			DRAIN HOLES:	WITHOUT DRAIN HOLES			DRAIN HOLES:				DRAIN HOLES:			
MTG. OPTION:	WITH PEGS			MTG. OPTION:	WITH PEGS			MTG. OPTION:				MTG. OPTION:			
HOUSING MAT'L:	NYLON 6/6 94V-2 (BLACK)			HOUSING MAT'L:	94V-2 NATURAL			HOUSING MAT'L:				HOUSING MAT'L:			
PACKAGING:	TRAY			PACKAGING:	TUBE			PACKAGING:				PACKAGING:			
PART NO.	ENG NO.	CKTS		PART NO.	ENG NO.	CKTS		PART NO.	ENG NO.	CKTS		PART NO.	ENG NO.	CKTS	
39-31-9028	5566	-02A2-BL	2	39-34-8028	5566	-02A2-1	2								
39-31-9048	5566	-04A2-BL	4	39-34-8048	5566	-04A2-1	4								
39-31-9068	5566	-06A2-BL	6	39-34-8068	5566	-06A2-1	6								
39-31-9088	5566	-08A2-BL	8	39-34-8088	5566	-08A2-1	8								
39-31-9108	5566	-10A2-BL	10	39-34-8108	5566	-10A2-1	10								
39-31-9128	5566	-12A2-BL	12	39-34-8128	5566	-12A2-1	12								
39-31-9148	5566	-14A2-BL	14	39-34-8148	5566	-14A2-1	14								
39-31-9168	5566	-16A2-BL	16	39-34-8168	5566	-16A2-1	16								
39-31-9188	5566	-18A2-BL	18	39-34-8188	5566	-18A2-1	18								
39-31-9208	5566	-20A2-BL	20	39-34-8208	5566	-20A2-1	20								
39-31-9228	5566	-22A2-BL	22	39-34-8228	5566	-22A2-1	22								
39-31-9248	5566	-24A2-BL	24	39-34-8248	5566	-24A2-1	24								

PLATING:				PLATING:				PLATING:				PLATING:			
DRAIN HOLES:				DRAIN HOLES:				DRAIN HOLES:				DRAIN HOLES:			
MTG. OPTION:				MTG. OPTION:				MTG. OPTION:				MTG. OPTION:			
HOUSING MAT'L:				HOUSING MAT'L:				HOUSING MAT'L:				HOUSING MAT'L:			
PACKAGING:				PACKAGING:				PACKAGING:				PACKAGING:			
PART NO.	ENG NO.	CKTS		PART NO.	ENG NO.	CKTS		PART NO.	ENG NO.	CKTS		PART NO.	ENG NO.	CKTS	
-	-	-	-	-	-	-	-	-	-	-	-	-	-	-	
-	-	-	-	-	-	-	-	-	-	-	-	-	-	-	
-	-	-	-	-	-	-	-	-	-	-	-	-	-	-	
-	-	-	-	-	-	-	-	-	-	-	-	-	-	-	
-	-	-	-	-	-	-	-	-	-	-	-	-	-	-	
-	-	-	-	-	-	-	-	-	-	-	-	-	-	-	
-	-	-	-	-	-	-	-	-	-	-	-	-	-	-	
-	-	-	-	-	-	-	-	-	-	-	-	-	-	-	
-	-	-	-	-	-	-	-	-	-	-	-	-	-	-	
-	-	-	-	-	-	-	-	-	-	-	-	-	-	-	
-	-	-	-	-	-	-	-	-	-	-	-	-	-	-	
-	-	-	-	-	-	-	-	-	-	-	-	-	-	-	
-	-	-	-	-	-	-	-	-	-	-	-	-	-	-	
-	-	-	-	-	-	-	-	-	-	-	-	-	-	-	
-	-	-	-	-	-	-	-	-	-	-	-	-	-	-	
-	-	-	-	-	-	-	-	-	-	-	-	-	-	-	
-	-	-	-	-	-	-	-	-	-	-	-	-	-	-	

REV. PACKAGING EC NO. UCP2009-1536 DRAWN: JKLUSTEMEIER 2008/11/24 CHKD: JRELL 2008/11/24 APPR: JSMITH 2008/11/24 R2	QUALITY SYMBOLS =0 =0	GENERAL TOLERANCES (UNLESS SPECIFIED)		DIMENSION STYLE IN/MM	SCALE 1:1	DESIGN UNITS METRIC	THIRD ANGLE PROJECTION		
		4 PLACES ±.001 ±.001 3 PLACES ±.001 ±.015 2 PLACES ±.001 ±.015 1 PLACE ±.001 ±.015	mm INCH mm INCH mm INCH mm INCH	DRAWN BY LEM	DATE 2/17/99	TITLE MINI FIT JR. VERT HEADER ASSEMBLIES WITH MOUNTING PEGS	MOLEX INCORPORATED		
		ANGULAR ±1/2°		CHECKED BY MAB	DATE 2/17/99	MATERIAL NO. SDA-5566-N*2*-*			
		DRAFT WHERE APPLICABLE MUST REMAIN WITHIN DIMENSIONS		APPROVED BY RRE	DATE 2/17/99	DOCUMENT NO.	SHEET NO. 4	THIS DRAWING CONTAINS INFORMATION THAT IS PROPRIETARY TO MOLEX INCORPORATED AND SHOULD NOT BE USED WITHOUT WRITTEN PERMISSION	

12	11	10	9	8	7	6	5	4	3	2	1
----	----	----	---	---	---	---	---	---	---	---	---