


English 日本語 한국어 简体中文

Search: Go
 My Parts (0 items)
[Register](#)
[Login](#)

[Product Name](#) [Cross-Ref](#) [Catalog](#) [Literature](#) [Industries](#) [Standards](#) [Contact Us](#) [About Us](#) [Investors](#) [Careers](#)
[Connectors](#) [Sockets](#) [I/O Connectors](#) [Cable Assemblies](#) [Fiber Optics](#) [Printed Circuit Products](#) [Automation and Electrical](#) [And More...](#)

[Home](#) 22-03-2101 OR 0022032101

Refine Search

Product Family (Please choose this first)


Part Number Results Related Product Results

For Selected Results:


 [Add to My Parts](#) [Compare](#) [Compare All](#)

Showing: 1 - 2 of 2 results.

Page: 1





20 per page 

Switch Language

English 

Need Assistance?

[Contact Us](#)
[Find a Distributor](#)
[Order Samples](#)
[Tech Library](#)

	<p>Part Number: <u>0022032101</u> Status: Active</p> <p>Description: 2.54mm (.100") Pitch KK® Wire-to-Board Header, Single Row, Vertical, 10 Circuits, PA Polyamide Nylon, Tin (Sn) Plating</p> <hr/> <p>Documents: <i>Note - Please disable browser pop-up blockers for documents on www.molex.com</i> Drawing (PDF) Product Specification PS-10-07 (PDF) 3D Model Packaging Specification (PDF) Related Catalog Page (PDF)</p>	
	<p>Part Number: <u>0743232101</u> Status: Active</p> <p>Description: MicroCross™ DVI Digital Single Channel, High Volume Plug Connector Sub-assembly, for PCB Mount, Gold (Au) Flash, Vertical, with key, 18 Circuits, Lead Free</p> <hr/> <p>Documents: <i>Note - Please disable browser pop-up blockers for documents on www.molex.com</i> Drawing (PDF) Product Specification PS-74320-001 (PDF) Related Catalog Page (PDF)</p>	

For Selected Results:

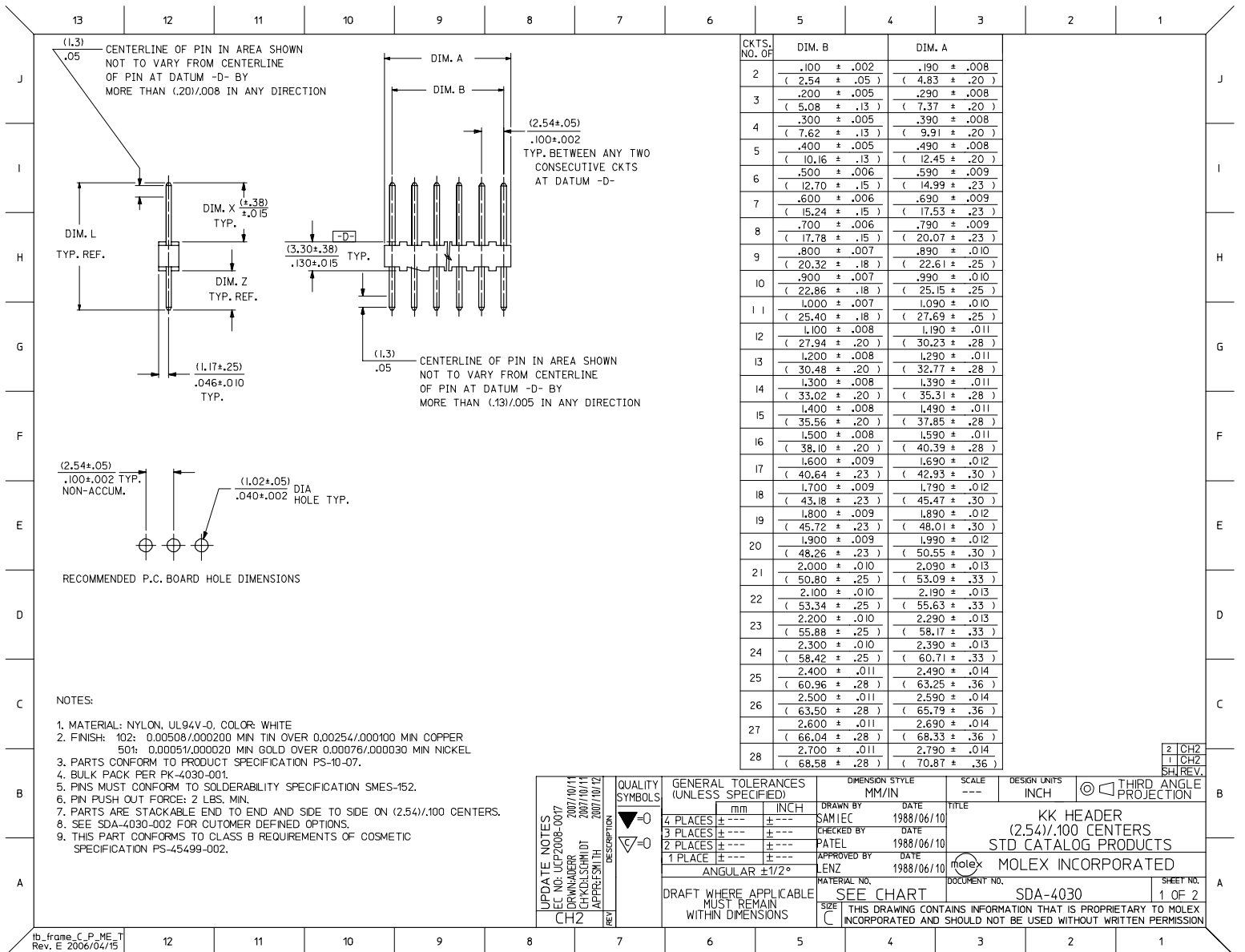
 [Compare](#) [Compare All](#)

Showing: 1 - 2 of 2 results.

Page: 1

20 per page [Feedback](#) [Privacy](#) [Legal](#) [Site Map](#) [Help](#)

Copyright 2005-2008



CKTS. NO. OF	DIM. B	DIM. A
2	.100 ± .002 (2.54 ± .05)	.190 ± .008 (4.83 ± .20)
3	.200 ± .005 (5.08 ± .13)	.290 ± .008 (7.37 ± .20)
4	.300 ± .005 (7.62 ± .13)	.390 ± .008 (9.91 ± .20)
5	.400 ± .005 (10.16 ± .13)	.490 ± .008 (12.45 ± .20)
6	.500 ± .006 (12.70 ± .15)	.590 ± .009 (14.99 ± .23)
7	.600 ± .006 (15.24 ± .15)	.690 ± .009 (17.53 ± .23)
8	.700 ± .006 (17.78 ± .15)	.790 ± .009 (20.07 ± .23)
9	.800 ± .007 (20.32 ± .18)	.890 ± .010 (22.61 ± .25)
10	.900 ± .007 (22.86 ± .18)	.990 ± .010 (25.15 ± .25)
11	1.000 ± .007 (25.40 ± .18)	1.090 ± .010 (27.69 ± .25)
12	1.100 ± .008 (27.94 ± .20)	1.190 ± .011 (30.23 ± .28)
13	1.200 ± .008 (30.48 ± .20)	1.290 ± .011 (32.77 ± .28)
14	1.300 ± .008 (33.02 ± .20)	1.390 ± .011 (35.31 ± .28)
15	1.400 ± .008 (35.56 ± .20)	1.490 ± .011 (37.85 ± .28)
16	1.500 ± .008 (38.10 ± .20)	1.590 ± .011 (40.39 ± .28)
17	1.600 ± .009 (40.64 ± .23)	1.690 ± .012 (42.93 ± .30)
18	1.700 ± .009 (43.18 ± .23)	1.790 ± .012 (45.47 ± .30)
19	1.800 ± .009 (45.72 ± .23)	1.890 ± .012 (48.01 ± .30)
20	1.900 ± .009 (48.26 ± .23)	1.990 ± .012 (50.55 ± .30)
21	2.000 ± .010 (50.80 ± .25)	2.090 ± .013 (53.09 ± .33)
22	2.100 ± .010 (53.34 ± .25)	2.190 ± .013 (55.63 ± .33)
23	2.200 ± .010 (55.88 ± .25)	2.290 ± .013 (58.17 ± .33)
24	2.300 ± .010 (58.42 ± .25)	2.390 ± .013 (60.71 ± .33)
25	2.400 ± .011 (60.96 ± .28)	2.490 ± .014 (63.25 ± .36)
26	2.500 ± .011 (63.50 ± .28)	2.590 ± .014 (65.79 ± .36)
27	2.600 ± .011 (66.04 ± .28)	2.690 ± .014 (68.33 ± .36)
28	2.700 ± .011 (68.58 ± .28)	2.790 ± .014 (70.87 ± .36)

- NOTES:
1. MATERIAL: NYLON, UL94V-0, COLOR: WHITE
 2. FINISH: 102: 0.00508/0.00200 MIN TIN OVER 0.00254/0.00100 MIN COPPER
504: 0.00051/0.00020 MIN GOLD OVER 0.00076/0.00030 MIN NICKEL
 3. PARTS CONFORM TO PRODUCT SPECIFICATION PS-10-07.
 4. BULK PACK PER PK-4030-001.
 5. PINS MUST CONFORM TO SOLDERABILITY SPECIFICATION SMES-152.
 6. PIN PUSH OUT FORCE: 2 LBS. MIN.
 7. PARTS ARE STACKABLE END TO END AND SIDE TO SIDE ON (2.54)/.100 CENTERS.
 8. SEE SDA-4030-002 FOR CUSTOMER DEFINED OPTIONS.
 9. THIS PART CONFORMS TO CLASS B REQUIREMENTS OF COSMETIC SPECIFICATION PS-45499-002.

UPDATE NOTES DEC NO: UCP2008-0017 DRAWN BY: ZORWADER 2007/10/11 CHECKED BY: CHACKSCHMIDT 2007/10/11 APPROVED BY: JEFFREY SMITH 2007/10/12	QUALITY SYMBOLS ◻=0 ◻=0	GENERAL TOLERANCES (UNLESS SPECIFIED) mm INCH		DIMENSION STYLE MM/IN		SCALE	DESIGN UNITS	THIRD ANGLE PROJECTION
		4 PLACES ± --- ± --- 3 PLACES ± --- ± --- 2 PLACES ± --- ± --- 1 PLACE ± --- ± ---	DRAWN BY: SAM IEC DATE: 1988/06/10 CHECKED BY: DATE: APPROVED BY: PATEL DATE: 1988/06/10 LENZ DATE: 1988/06/10	---	INCH	---	INCH	---
DRAFT WHERE APPLICABLE MUST REMAIN WITHIN DIMENSIONS		MATERIAL NO. SEE CHART SIZE C		DOCUMENT NO. SDA-4030		SHEET NO. 1 OF 2		

KK HEADER
(2.54)/.100 CENTERS
STD CATALOG PRODUCTS
MOLEX INCORPORATED

	13	12	11	10	9	8	7	6	5	4	3	2	1	
	ENG. NO.	PIN NO.	DIM. L	DIM. X	DIM. Z	PACKAGE PER	EDP NO. IN COL NO							
J	A-4030 -NA(102)	2766 -I(102)	.560 (14.22)	.295 (7.49)	.135 (3.43)	PK-4030-001 BULK	1							J
	A-4030 -NA(50I)	2766 -I(50I)	.560 (14.22)	.295 (7.49)	.135 (3.43)	PK-4030-001 BULK	2							
I	A- -	-	()	()	()									I
	A- -	-	()	()	()									
	A- -	-	()	()	()									
	A- -	-	()	()	()									
H														H
G														G
	COLUMN NO. 1		COLUMN NO. 2											
	EDP NO.	ENG. NO.	NO OF DCTS	EDP NO.	ENG. NO.	NO OF DCTS								
	22-03-202I	A-4030-02A(102)	2	22-10-202I	A-4030-02A(50I)	2								
	22-03-203I	A-4030-03A(102)	3	22-10-203I	A-4030-03A(50I)	3								
F	22-03-204I	A-4030-04A(102)	4	22-10-204I	A-4030-04A(50I)	4								F
	22-03-205I	A-4030-05A(102)	5	22-10-205I	A-4030-05A(50I)	5								
	22-03-206I	A-4030-06A(102)	6	22-10-206I	A-4030-06A(50I)	6								
	22-03-207I	A-4030-07A(102)	7	22-10-207I	A-4030-07A(50I)	7								
	22-03-208I	A-4030-08A(102)	8	22-10-208I	A-4030-08A(50I)	8								
	22-03-209I	A-4030-09A(102)	9	22-10-209I	A-4030-09A(50I)	9								
E	22-03-210I	A-4030-10A(102)	10	22-10-210I	A-4030-10A(50I)	10								E
	22-03-211I	A-4030-11A(102)	11	22-10-211I	A-4030-11A(50I)	11								
	22-03-212I	A-4030-12A(102)	12	22-10-212I	A-4030-12A(50I)	12								
	22-03-213I	A-4030-13A(102)	13	22-10-213I	A-4030-13A(50I)	13								
	22-03-214I	A-4030-14A(102)	14	22-10-214I	A-4030-14A(50I)	14								
	22-03-215I	A-4030-15A(102)	15	22-10-215I	A-4030-15A(50I)	15								
D	22-03-216I	A-4030-16A(102)	16	22-10-216I	A-4030-16A(50I)	16								D
	22-03-217I	A-4030-17A(102)	17	22-10-217I	A-4030-17A(50I)	17								
	22-03-218I	A-4030-18A(102)	18	22-10-218I	A-4030-18A(50I)	18								
	22-03-219I	A-4030-19A(102)	19	22-10-219I	A-4030-19A(50I)	19								
	22-03-220I	A-4030-20A(102)	20	22-10-220I	A-4030-20A(50I)	20								
	22-03-221I	A-4030-21A(102)	21	22-10-221I	A-4030-21A(50I)	21								
	22-03-222I	A-4030-22A(102)	22	22-10-222I	A-4030-22A(50I)	22								
C	22-03-223I	A-4030-23A(102)	23	22-10-223I	A-4030-23A(50I)	23								C
	22-03-224I	A-4030-24A(102)	24	22-10-224I	A-4030-24A(50I)	24								
	22-03-225I	A-4030-25A(102)	25	22-10-225I	A-4030-25A(50I)	25								
	22-03-226I	A-4030-26A(102)	26	22-10-226I	A-4030-26A(50I)	26								
	22-03-227I	A-4030-27A(102)	27	22-10-227I	A-4030-27A(50I)	27								
	22-03-228I	A-4030-28A(102)	28	22-10-228I	A-4030-28A(50I)	28								
B														B
A														A
	UPDATE TITLE BLOCK		QUALITY SYMBOLS		GENERAL TOLERANCES (UNLESS SPECIFIED)		DIMENSION STYLE IN/MM		SCALE --- INCH		DESIGN UNITS INCH		THIRD ANGLE PROJECTION	
	REC NO: UCP2008-0017		DRAWN BY: 2007/10/11		4 PLACES ± --- ± ---		DRAWN BY: DATE: 1993/07/15		---		INCH		TITLE: KK HEADER (2.54)/.100 CENTERS STD CATALOG PRODUCTS	
	CHK: CHZ		APPROVED BY: 2007/10/11		3 PLACES ± --- ± ---		CHECKED BY: DATE: 1993/07/15		---		INCH		MOLEX INCORPORATED	
	APP: CHZ		REV: 2007/10/11		2 PLACES ± --- ± ---		APPROVED BY: DATE: 1993/07/15		---		INCH		MATERIAL NO. SDA-4030	
					1 PLACE ± --- ± ---		LENZ		---		INCH		DOCUMENT NO. 2 OF 2	
					ANGULAR ±1/2°		SEE CHART		---		INCH		SHEET NO. 2 OF 2	
					DRAFT WHERE APPLICABLE MUST REMAIN WITHIN DIMENSIONS		SIZE C		---		INCH		THIS DRAWING CONTAINS INFORMATION THAT IS PROPRIETARY TO MOLEX INCORPORATED AND SHOULD NOT BE USED WITHOUT WRITTEN PERMISSION	
	12	11	10	9	8	7	6	5	4	3	2	1		
	ib_frame_C_P_ME_T													
	Rev. E 2006/04/15													