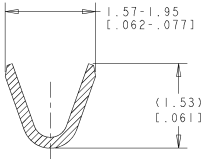
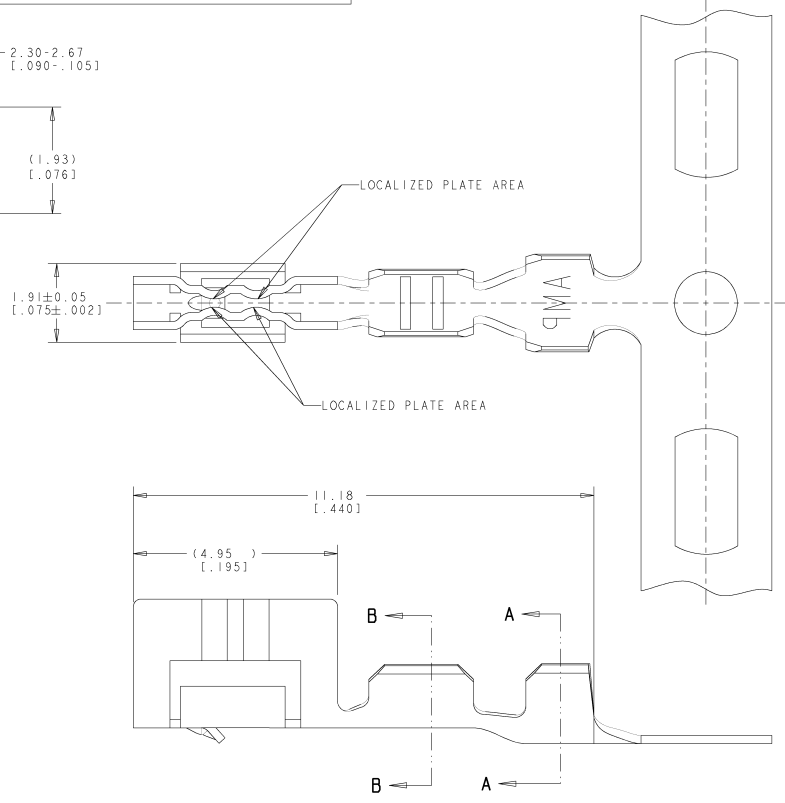


SECTION A-A
SCALE 20:1



SECTION B-B
SCALE 20:1

METRIC

LOC	DIST	REVISIONS					
GP	00	P	LYE	DESCRIPTION	DATE	DWN	APVD
		BI		REVISED PER ECO-11-004835	11MAR2011	RK	HMR

- WIRE RANGE .13 - .35 mm² (26 -22 AWG).
- INSULATION RANGE 0.89 - 1.65 [0.035 - .065].
- 0.00038 [0.00015] MIN GOLD STRIPE IN LOCALIZED AREA OVER 0.00127 [0.00050] MIN NICKEL OVER ENTIRE CONTACT -OR- GOLD FLASH OVER PALLADIUM-NICKEL .00038 [0.00015] MIN TOTAL IN LOCALIZED AREA OVER .00127 [0.00050] MIN NICKEL OVER ENTIRE CONTACT.
- 0.00076 [0.00030] MIN GOLD STRIPE IN LOCALIZED AREA OVER 0.000127 [0.00050] MIN NICKEL OVER ENTIRE CONTACT -OR- GOLD FLASH OVER PALLADIUM-NICKEL .00076 [0.00030] MIN TOTAL IN LOCALIZED AREA OVER .00127 [0.00050] MIN NICKEL OVER ENTIRE CONTACT.
- NOT FOR USE IN HOUSING PART NUMBER 770602.
- CONTACTS COATED WITH ANTI-FRETTING LUBRICANT.

△	PH BRZ	1375819-3
△	PH BRZ	1375819-2
PRE-TIN	PH BRZ	1375819-1
FINISH	MATERIAL	PART NUMBER

THIS DRAWING IS A CONTROLLED DOCUMENT. DWG. DATE: 21 JUNE 2001. WH. TAKEN. COM. DATE: 21 JUNE 2001. NAME: ELLIS. PRODUCT SPEC: 108-1948. APPLICATION SPEC: 114-13036. WEIGHT: -. SIZE: A2. CASE CODE: 00779. DRAWING NO: 1375819. RESTRICTED TO: -. SCALE: 15:1. SHEET: 1 OF 1. REV: B1.

STE TE Connectivity
CONTACT, CST 100 11