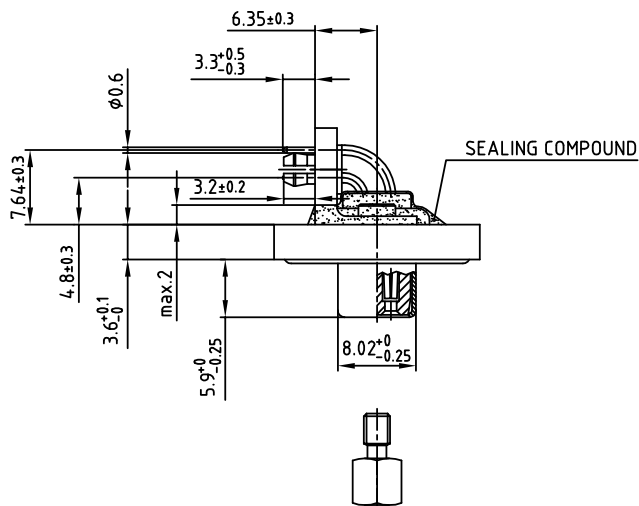
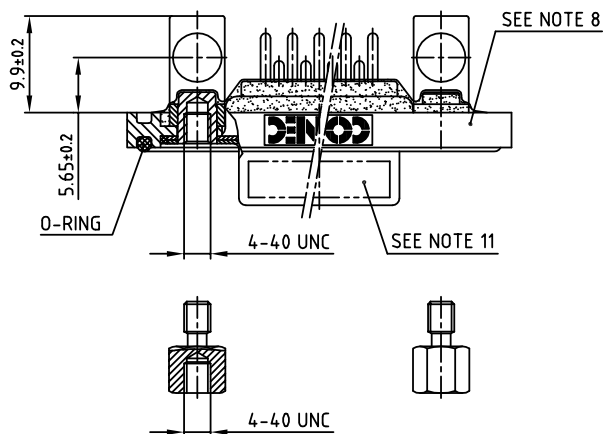
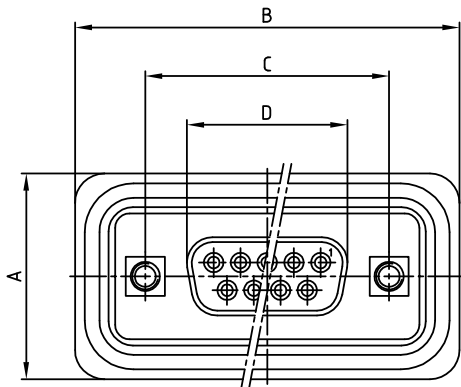


used for: D-SUB

No. of pos.	A <sup>+0.2</sup>	B <sup>+0.2</sup>	C	D <sup>-0.25</sup>	PART NO.
9	21.1	39.4	25.00 <sup>+0.13</sup> <sub>-0.13</sub>	16.46	6STD09SCT99S40X
15	21.1	47.7	33.30 <sup>+0.15</sup> <sub>-0.15</sub>	24.79	6STD15SCT99S40X
25	21.1	61.4	47.04 <sup>+0.13</sup> <sub>-0.13</sub>	38.50	6STD25SCT99S40X
37	21.1	77.9	63.50 <sup>+0.13</sup> <sub>-0.13</sub>	54.96	6STD37SCT99S40X



(b)

NOTES:

- METALSHELLS: COPPER ALLOY; min. 315µin TIN over 40-80µin NICKEL
- INSULATORS: PBT GF UL 94 V-0, BLACK
- CONTACTS: COPPER ALLOY  
PLATING: 30µin HARD GOLD over min. 50µin NICKEL
- METAL BRACKET: STEEL; min. 320µin TIN over 80µin NICKEL
- THREADED INSERT: COPPER ALLOY; min. 200µin TIN over 80µin NICKEL
- PCB-SNAP: COPPER ALLOY; min. 200µin TIN over 80µin NICKEL  
PCB-HOLE:  $\phi 3.1 \pm 0.1$ ; PCB THICKNESS 1.6mm
- HEXLOCKING SCREW: STAINLESS STEEL
- FRAME: ZINC DIECAST; NICKEL PLATED
- P.C.B. HOLE DRILLINGS ON SHEET 2 + 3
- RECOMMENDED TORQUE FOR MOUNTING SCREW 35Ncm (3.1 in.LB)/max.40Ncm (3.5 in.LB)
- CONNECTOR IS PART MARKED: **PART-NO. CONEC ABC**



APPROVAL * FREIGABE * DEBLOCAGE * AUTORIZACION * APPROVAL	
CUSTOMER APPROVAL DATE:	
NAME:	TITLE:
COMPANY NAME:	
APPROVAL * FREIGABE * DEBLOCAGE * AUTORIZACION * APPROVAL	

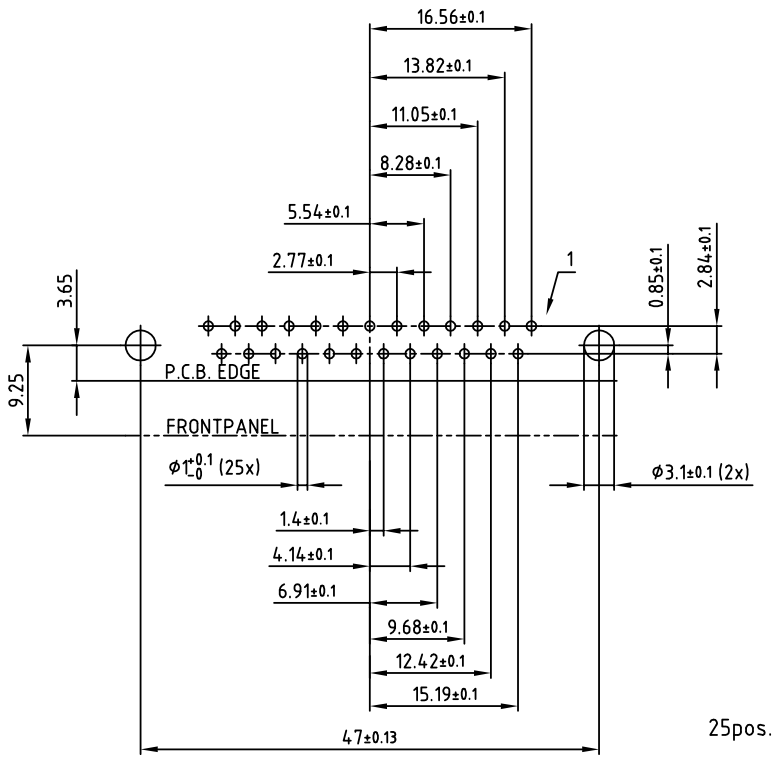
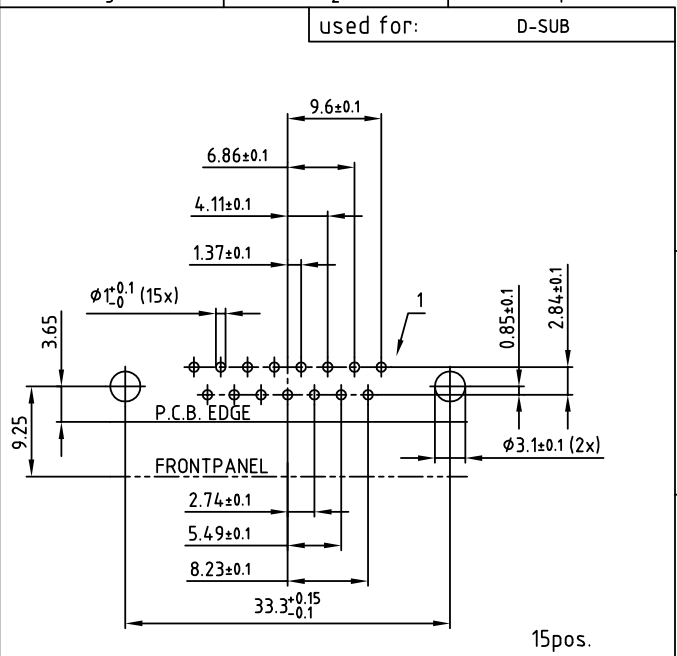
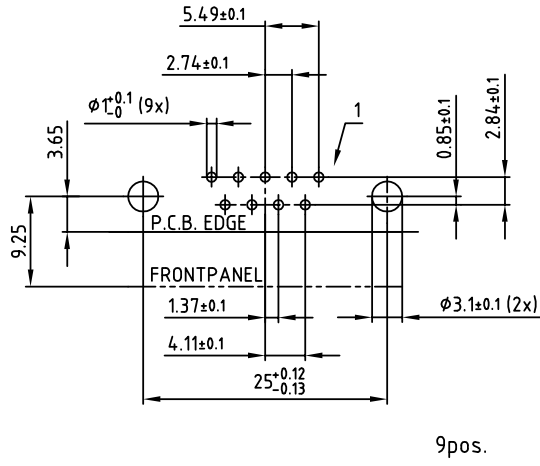
THIS DRAWING MAY NOT BE COPIED OR REPRODUCED IN ANY WAY, AND MAY NOT BE PASSED ON TO A THIRD PARTY, WITHOUT WRITTEN PERMISSION.  
OWNERSHIP AND COPYRIGHT OF CONEC GmbH  
DO NOT ALTER CAD DRAWING BY HAND

1 x b	Ä2903	08.01.2008	Sonne
a	Origin		
rev.	description	date	name

tolerance	dim. in mm	
2004	date	
drawn	03.09.	Lehmenkühler
appd.	03.09.	Mickenbecker
norm	DIN 41652	
d-old		

scale:	2:1
material:	SEE NOTES
title:	
D-SUB FEMALE 90°	
9-37pos. SOLDER PIN ANGLED	
with threaded insert, metal bracket and clip	
dwg no:	AutoCAD 2004
	DIN-A
	3
	sh:1/3
part no:	SEE TABLE





APPROVAL # FREIGABE # DEBLOCAGE # AUTORIZACION # APPROVAL

CUSTOMER APPROVAL DATE:

NAME: TITLE:

COMPANY NAME:

APPROVAL # FREIGABE # DEBLOCAGE # AUTORIZACION # APPROVAL

THIS DRAWING MAY NOT BE COPIED OR REPRODUCED IN ANY WAY, AND MAY NOT BE PASSED ON TO A THIRD PARTY, WITHOUT WRITTEN PERMISSION. OWNERSHIP AND COPYRIGHT OF CONEC GmbH DO NOT ALTER CAD DRAWING BY HAND

rev.	description	date	name

tolerance		dim. in mm
2004	date	
drawn	03.09.	Lehmenkühler
appd.	03.09.	Mickenbecker
norm	DIN 41652	
d-old		

**CONEC**

scale: 2:1

material: SEE SHEET 1

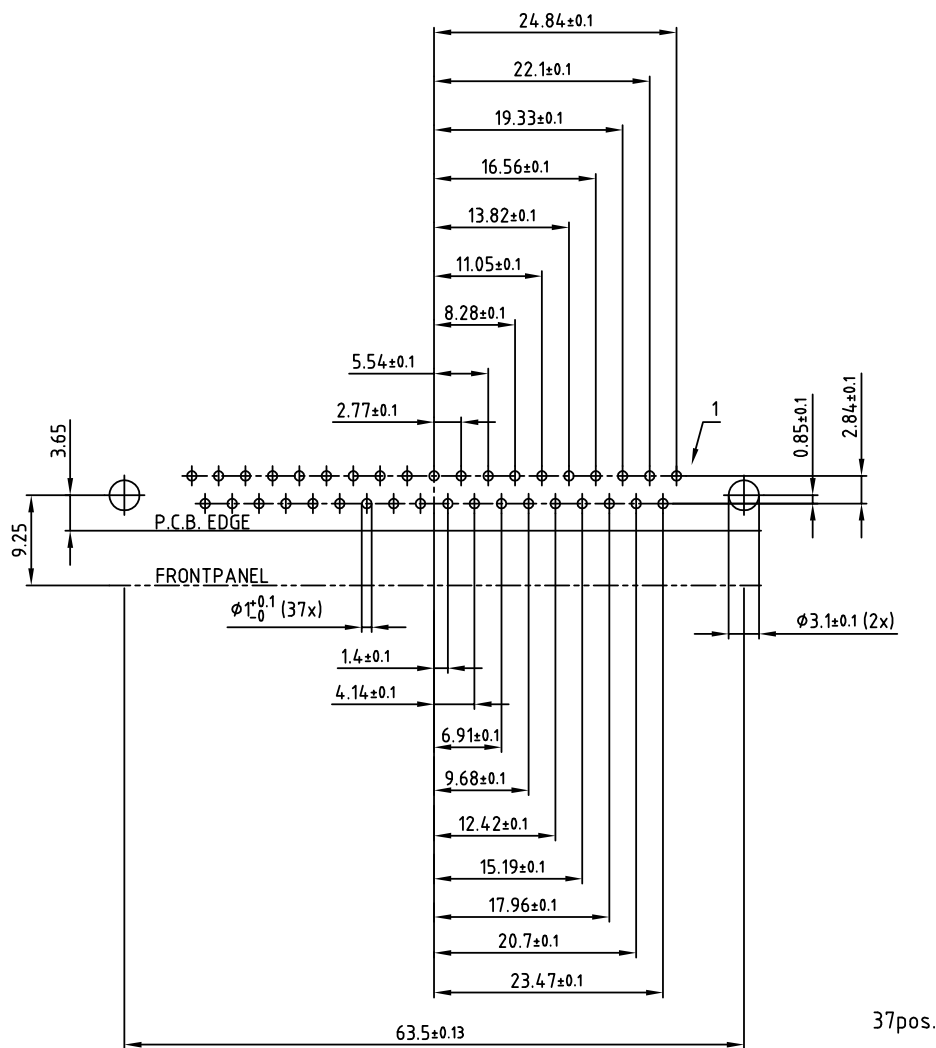
title: P.C.B. HOLE DRILLINGS  
D-SUB FEMALE 90° 9-37pos. SOLDER PIN 90°  
with threaded insert, metal bracket and clip

dwg no: AutoCAD 2004

part no: SEE SHEET 1

DIN-A 3 sh:2/3

used for: D-SUB



APPROVAL * FREIGABE * DEBLOCAGE * AUTORIZACION * APPROVAL	
CUSTOMER APPROVAL DATE:	
NAME:	TITLE:
COMPANY NAME:	
APPROVAL * FREIGABE * DEBLOCAGE * AUTORIZACION * APPROVAL	

THIS DRAWING MAY NOT BE COPIED OR REPRODUCED IN ANY WAY, AND MAY NOT BE PASSED ON TO A THIRD PARTY, WITHOUT WRITTEN PERMISSION.  
OWNERSHIP AND COPYRIGHT OF CONEC GmbH  
DO NOT ALTER CAD DRAWING BY HAND

rev.	description	date	name

tolerance		 dim. in mm
2004	date	
drawn	03.09.	name
appd.	03.09.	Mickenbecker
norm	DIN 41652	
d-old		

scale:	2:1	
material:	SEE SHEET 1	
title:	P.C.B. HOLE DRILLINGS	
	D-SUB FEMALE 90° 9-37pos. SOLDER PIN 90°	
	with threaded insert, metal bracket and clip	
dwg no:	AutoCAD 2004	DIN-A
	18K1A293	3
part no:	SEE SHEET 1	sh:3/3