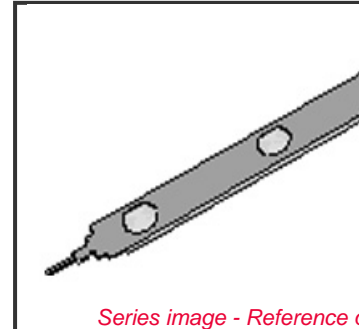


**Part Number:** 0011030043

**Status:** Active

**Description:** Extraction Tool



Series image - Reference c

**EU RoHS**  
**RoHS Compliance Not**  
**Required**

**General**    **Material Info**

---

**General**

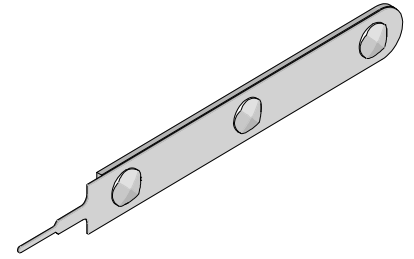
Product Family	Application Tooling
Series	T0201
Function	Extraction
Geographic Area	Global
Level of Automation	Manual
More Detailed Tech Information	<a href="mailto:applicationtooling@molex.com">applicationtooling@molex.com</a>
Product Name	N/A
Survey	<a href="http://www.molex.com/review/apptool_survey.html">www.molex.com/review/apptool_survey.html</a>
Tool Type	Handtool

**Material Info**

Old Part Number	HT60923A
-----------------	----------



**Extractor Tool  
Instruction Sheet  
Order No. 11-03-0043  
Engineering No. HT60923A**



**FEATURES**

- This tool is designed to extract many different terminal series from various plug and receptacle housings. See Chart below.

**SCOPE**

Products: Micro-Fit 3.0™ and 1.25mm (.049") Pitch PicoBlade™ Crimp Terminals, 2.00mm (.079") Pitch CLIK-Mate™ Wire-to-Board Crimp Terminal, and OBD-II Crimp Terminal, 4.00mm (.157") Pitch.

Terminal Series No.	Housings Series No.			Terminal Order No.					
43030	43025	43645	44133	43030-0001	43030-0002	43030-0003	43030-0004	43030-0005	43030-0006
				43030-0007	43030-0008	43030-0009	43030-0010	43030-0011	43030-0012
				43030-0051	43030-0052	43030-0053	43030-0056	43030-0057	43030-0058
				43030-0059	43030-0080	43030-0081	43030-1001		
43031	43020	43640	44300	43031-0001	43031-0002	43031-0003	43031-0004	43031-0005	43031-0006
				43031-0007	43031-0008	43031-0009	43031-0010	43031-0011	43031-0012
				43031-0016	43031-0017	43031-0018	43031-0019	43031-0051	430310052
				430310053	43031-0057	43031-0059	43031-0102	43031-0103	43031-0106
44372	43025	43645	44133	44372-0002					
46235	43025	43645	44133	46235-0001	46235-0002	46235-0003	46235-0004		
50058	51021			50058-8000	50058-8099	50058-8100	50058-8200	50058-8300	50058-8400
				50058-8500					
50061	51022			50061-8000	50061-8018	50061-8028	50061-8099	50061-8100	50061-8118
				50061-8128					
50079	51021			50079-8000	50079-8000	50079-8053	50079-8099	50079-8100	50079-8153
				50079-8000	39-00-0414	39-00-0413			
50080	51022			50080-8000	50080-8100				
50125	51047			50125-8000	50125-8100				
50133	51047			50133-8000	50133-8100				
50147	52266			50147-8000	50147-8100				
50148	52213			50148-8000	50148-8100				
50420	51115		51116	50420-8000					
502438	502443		502494	502438-0000	502438-0100				

Note: All Individual terminals may be extracted from the housing using this Tool.