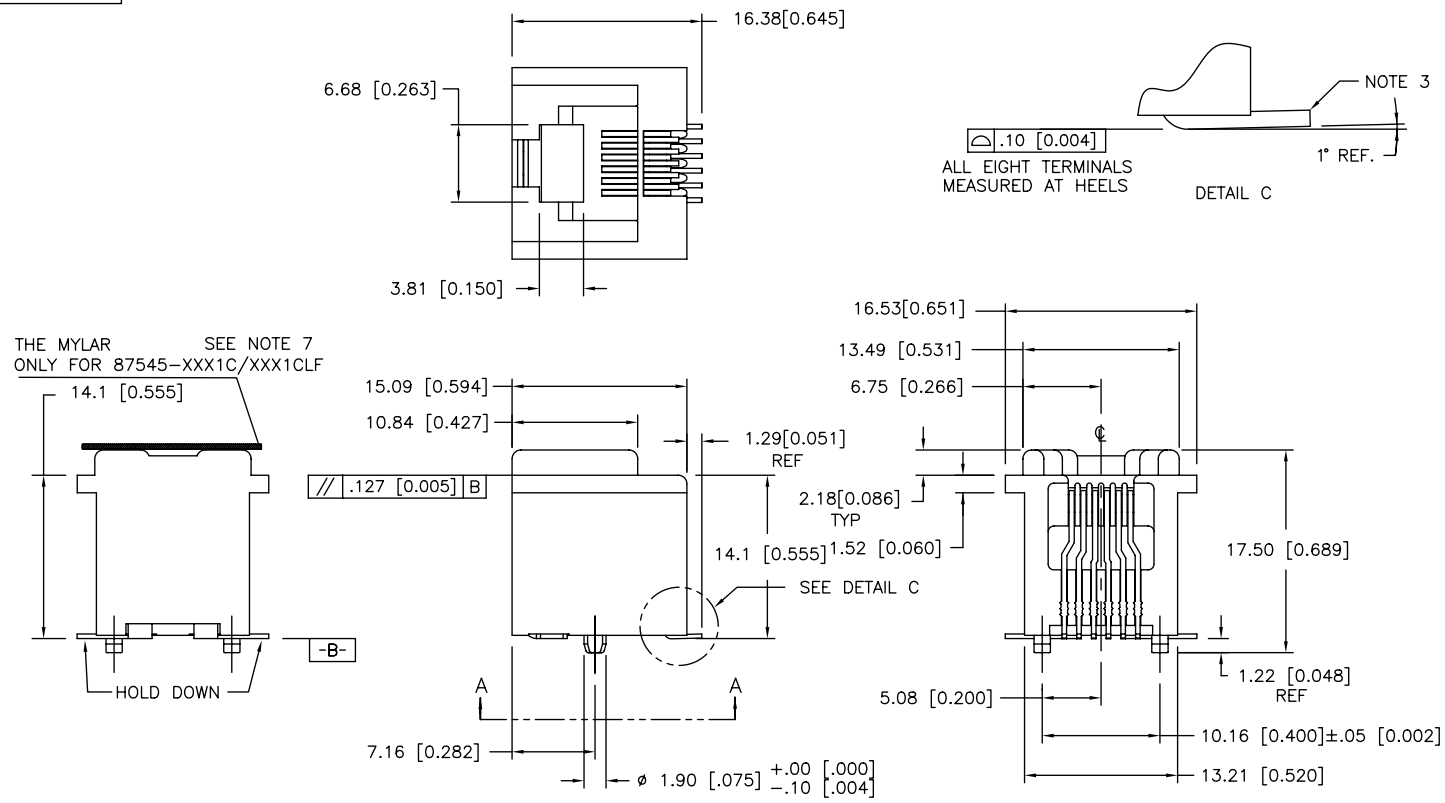


All rights strictly reserved. Reproduction or issue to third parties in any form whatever is not permitted without written authority from the proprietor. Property of FCI. Copyright FCI.

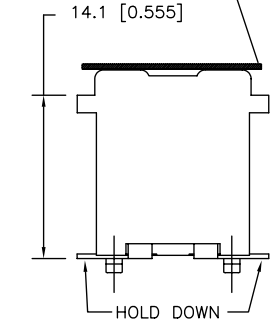


PRODUCT NO.  
SEE TABLE

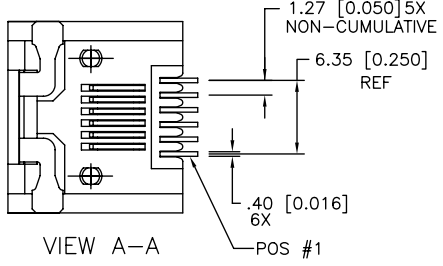
1 | 2 | 3 | 4



THE MYLAR ONLY FOR 87545-XXX1C/XXX1CLF SEE NOTE 7



Surface texture symbol:  $\sqrt{\sqrt{.127 [0.005] B}}$



mat'l. code		tolerances unless otherwise specified		CUSTOMER COPY	FCI	www.fciconnect.com
ltr	ecn no	dr	date	linear	projection	title
J	V81474	RGD	9/15/96	.X±.3/.XX±.01	A4	A-SMT ASSEMBLY VERT 6 POS
K	V12666	LP	1/10/02	.XX±.13/.XXX±.005		product family
L	N05-0035	YS	02/18/05	XXX±.051/.XXX±.0020	size	dwg no
M	N05-0142	ZC	6/2/05	angles 0° ±2'	scale	213
N	N07-0217	WG	09/07/07	dr S.DUESTERHOEFT 3/20/96	1:1	sheet
P	N08-0194	SH	09/08/09	enr Y.BELOPOLSKY 3/20/96		1 of 2
				chr Y.BELOPOLSKY 7/8/96		
				appd Y.BELOPOLSKY 7/8/96		
sheet index	revision sheet	N	N			
		1	2			

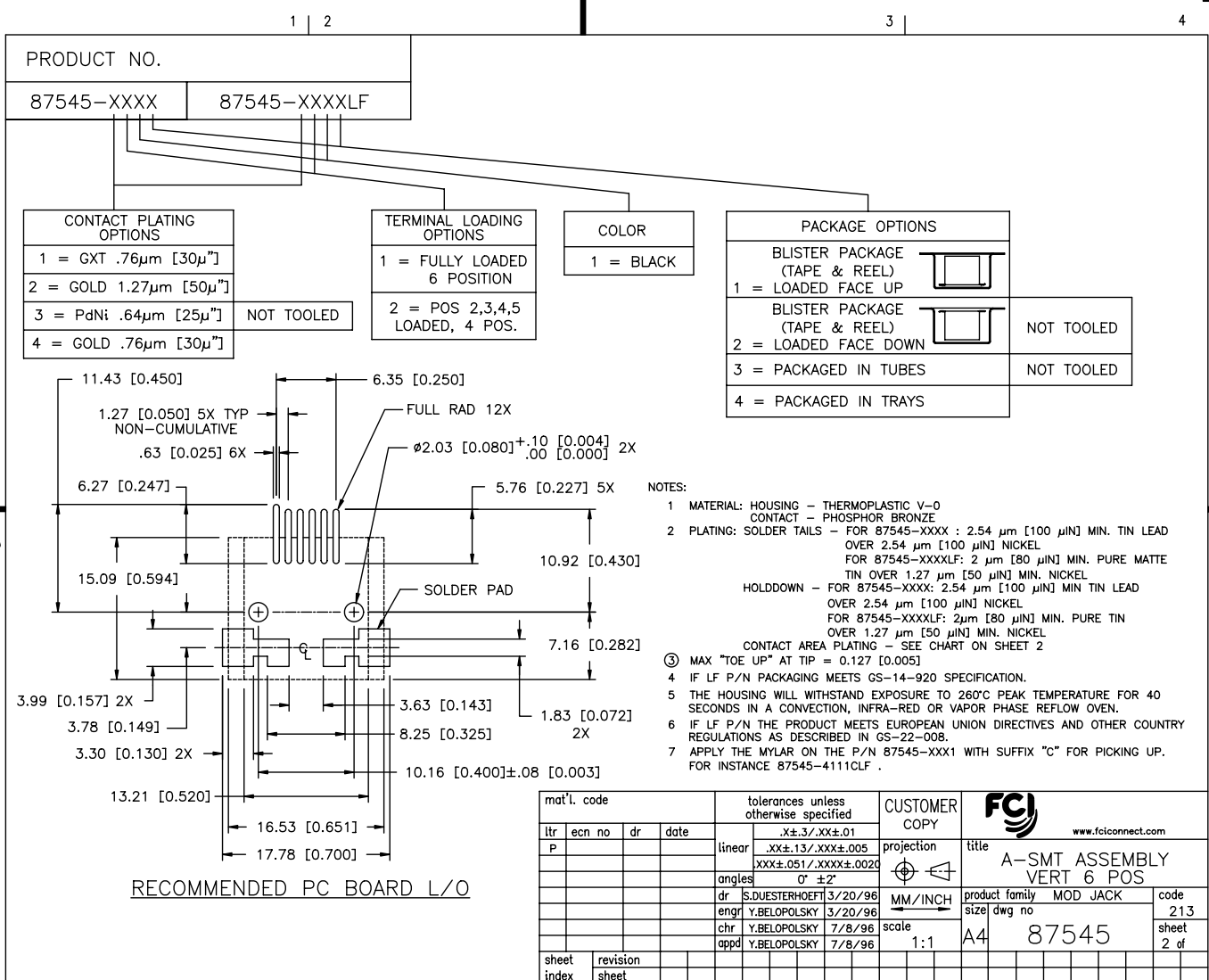
1 | 2 | 3 | 4

ACAD PDM: Rev:P STATUS: Released cage code 22526 Aug 01, 2010

Tous droits strictement réservés. Reproduction ou communication à des tiers interdite sous quelque forme que ce soit sans autorisation écrite du propriétaire. Propriété de c FCI. Droits de reproduction FCI.



All rights strictly reserved. Reproduction or issue to third parties in any form without the written permission of FCI. Copyright FCI.



- NOTES:
- 1 MATERIAL: HOUSING - THERMOPLASTIC V-0  
CONTACT - PHOSPHOR BRONZE
  - 2 PLATING: SOLDER TAILS - FOR 87545-XXXX : 2.54 µm [100 µin] MIN. TIN LEAD OVER 2.54 µm [100 µin] NICKEL  
FOR 87545-XXXXLF: 2 µm [80 µin] MIN. PURE MATTE TIN OVER 1.27 µm [50 µin] MIN. NICKEL  
HOLDDOWN - FOR 87545-XXXX: 2.54 µm [100 µin] MIN TIN LEAD OVER 2.54 µm [100 µin] NICKEL  
FOR 87545-XXXXLF: 2µm [80 µin] MIN. PURE TIN OVER 1.27 µm [50 µin] MIN. NICKEL  
CONTACT AREA PLATING - SEE CHART ON SHEET 2
  - 3 MAX "TOE UP" AT TIP = 0.127 [0.005]
  - 4 IF LF P/N PACKAGING MEETS GS-14-920 SPECIFICATION.
  - 5 THE HOUSING WILL WITHSTAND EXPOSURE TO 260°C PEAK TEMPERATURE FOR 40 SECONDS IN A CONVECTION, INFRA-RED OR VAPOR PHASE REFLOW OVEN.
  - 6 IF LF P/N THE PRODUCT MEETS EUROPEAN UNION DIRECTIVES AND OTHER COUNTRY REGULATIONS AS DESCRIBED IN GS-22-008.
  - 7 APPLY THE MYLAR ON THE P/N 87545-XXX1 WITH SUFFIX "C" FOR PICKING UP. FOR INSTANCE 87545-4111CLF .

mat'l. code		tolerances unless otherwise specified		CUSTOMER COPY		FCI www.fciconnect.com	
ltr	ecn no	dr	date	linear	projection	title	
P				.XX±.13/.XXX±.005	MM/INCH	A-SMT ASSEMBLY VERT 6 POS	
				angles 0° ±2°	scale	product family	code
				dr S.DUESTERHOEFT 3/20/96	1:1	MOD JACK	213
				enrg Y.BELOPOLSKY 3/20/96		size	sheet
				chr Y.BELOPOLSKY 7/8/96		dwg no	2 of
				appd Y.BELOPOLSKY 7/8/96		87545	
sheet index	revision sheet						