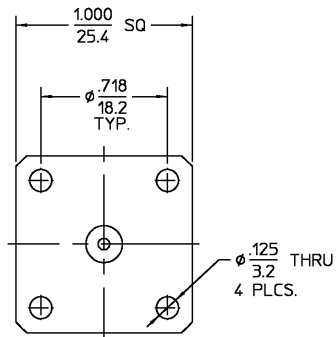
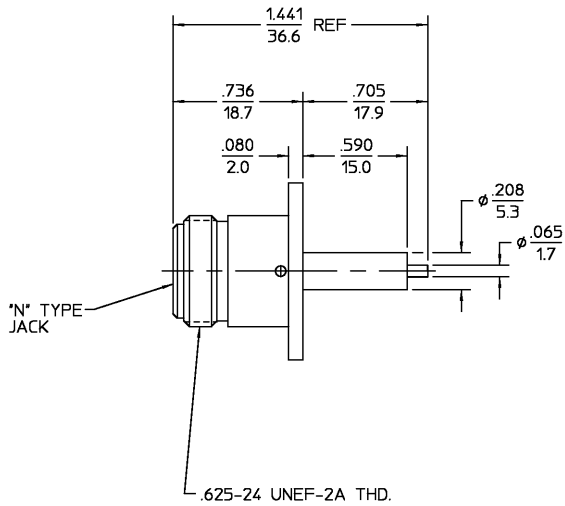


REVISIONS			
REV	DESCRIPTION	DATE	APPROVED
02 <sub>1</sub>	REVISED	B.M.T. 7/18/86	<i>[Signature]</i>



COMPONENT	MATERIAL	FINISH
HOUSING	STAINLESS STEEL PER ASTM-A484 AND ASTM-A582, TYPE 303	PASSIVATE PER QQ-P-35
DIELECTRIC	TFE FLUOROCARBON PER ASTM-D-1457	N/A
CENTER CONTACT	BERYLLIUM COPPER PER ASTM-B-196 OR ASTM-B-197, ALLOY C17300, CONDITION H	GOLD PLATE PER MIL-G-45204

UNLESS OTHERWISE SPECIFIED DIMENSIONS ARE IN INCHES	DRAWN BY E.S.	DATE 2/6/77	 AMP Incorporated 140 Fourth Avenue Waltham, MA 02451-7599	
FRAC. ± 1/64	DEC. ± .005	ANGLES ± °		TITLE OSN STRAIGHT 4 HOLE FLANGE MOUNT HF JACK RECEPTACLE
These drawings and specifications are the property of M/A CDM Interconnect Div. and shall not be reproduced or copied or used in whole or in part as the basis for the manufacture or sale of items without written permission.	CHECKED BY J.M.V.	DATE 2/21/77		SIZE B CODE IDENT. NO. 26805 SCALE 3:1
	APP'D BY B.M.C.	DATE 2/23/77	3652-1201-02 REV 02 <sub>1</sub> SHEET 1 OF 1	

NOTES:  
1. CAPTURED CENTER CONTACT

.XXX = in  
XX.X = mm (REF)

CUSTOMER DRAWING

AMP PART # 1058644-1  
SHEET 1 OF 1 REV A