

4

3

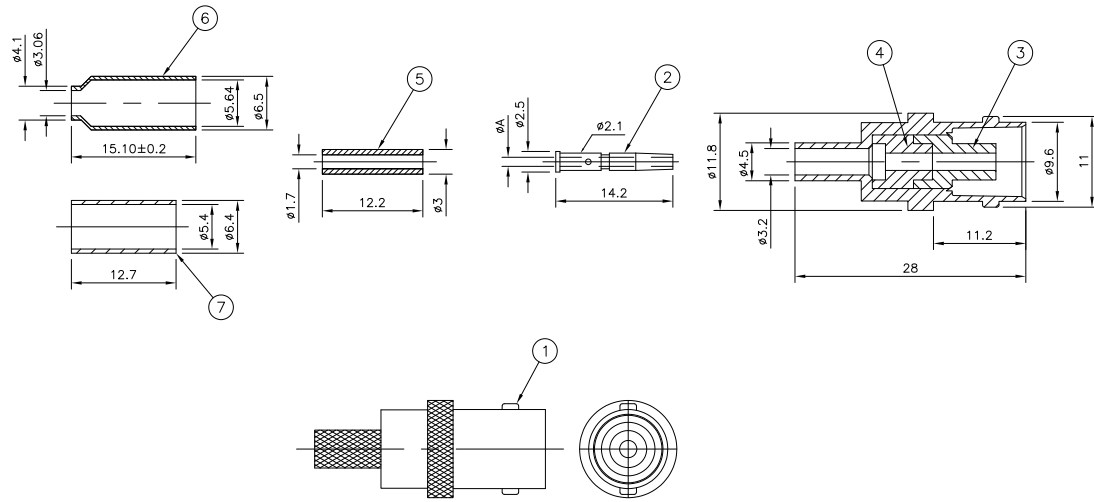
2

1

THIS DRAWING IS UNPUBLISHED. RELEASED FOR PUBLICATION JUNE 2004.  
 © COPYRIGHT 2004 BY TYCO ELECTRONICS CORPORATION. ALL RIGHTS RESERVED.

- NOTES
- 1. IP PACK: 1PC/ONE BAG, 100PCS/INNER BOX, 1000PCS/OUTER BOX
  - 2. BULK PACK: 100PCS/ONE BAG, 100PCS/INNER BOX, 1000PCS/OUTER BOX
  - 3. Ni PLATING OVER Ni PLATING OVER Cu PLATING
  - 4. Ni PLATING OVER Cu PLATING
  - 5. HAND TOOL: 9-1478240-0
  - 6. DIE SET: SEE TABLE
  - 7. FOR TECHNICAL DATA REFER TO YOUR LOCAL TYCO ELECTRONICS SALES OFFICE
  - 8. ALL DIMENSIONS ARE NOMINAL FOR REFERENCE ONLY UNLESS OTHERWISE STATED

LOC	DIST	REV	DESCRIPTION	DATE	BY	APP'D
E	B	F	C1	ECO-09-023525	20 OCT 09	RITA BOB
		1.1	9-1478242-0	RG58C/U, 141A/U, URM43, 76, BELDEN 9907, KX 15		5-1634511-3
		1.1	9-1478242-0	RG58C/U, 141A/U, URM43, 76, BELDEN 9907, KX 15		5-1634511-2
		0.57	9-1478242-0	RG174A/U, 188A/U, 316/U, URM95, KX 3B, KX 22A		5-1634511-1
		0.57	9-1478242-0	RG174A/U, 188A/U, 316/U, URM95, KX 3B, KX 22A		5-1634511-0
		A	DIE SET	CABLE GROUPS		PART NO.



QTY	UNIT	DESCRIPTION	PARTS LIST
1	1	BRASS	CRIMP SLEEVE 7
1	1	BRASS	CRIMP SLEEVE 6
1	1	NYLON	PUSHER SLEEVE 5
1	1	POLYMETHYLENE	INSULATOR 4
1	1	POLYMETHYLENE	INSULATOR 3
1	1	PHOSPHOR BRONZE	CONTACT 2
1	1	ZINC ALLOY	BODY 1
9-1478242-0	15-0	MATERIAL	DESCRIPTION ITEM

THIS DRAWING IS A CONTROLLED DOCUMENT. DIM: RITA ZUO 24 Feb 09  
 CHK: ANSON MA 24 Feb 09  
 DPC: BOB ZHAO 24 Feb 09

TYCO Electronics  
 Kunshan, Jiangsu, PRC 215312

PRODUCT SPEC: 108-112000  
 APPLICATION SPEC: SEE SHEET 2  
 WEIGHT: -

SIZE: A2  
 CASE CODE: 00779  
 DRAWING NO: C=1634511

RESTRICTED TO: -  
 CUSTOMER DRAWING  
 SCALE: NTS  
 SHEET: 1 OF 2  
 REV: C1

4

3

2

1

THIS DRAWING IS UNPUBLISHED. RELEASED FOR PUBLICATION JUNE 2004.  
 © COPYRIGHT 2004 BY TYCO ELECTRONICS CORPORATION. ALL RIGHTS RESERVED.

LOC	DIST	REV	DESCRIPTION	DATE	BY	APPD
E	B	F	SEE SHEET 1	-	-	-

COMPONENTS

ITEM NO.	DESCRIPTION	QUANTITY	UNIT
	MAIN BODY (ITEM 1,3, & 4)		
	CONTACT (ITEM 2)		
	PUSHER SLEEVE (ITEM 5)		
	CRIMP FERRULES (ITEM 6 & 7)		

ASSEMBLY INSTRUCTION

CABLES: RS58C/U, 141A/U, URM43, 76, BELDEN 9907, KX 15

CABLES: RG174A/U, 188A/U, 316/U, URM95, KX 3B, KX 22A

**STEP 1**  
1. SLIDE METAL CRIMP FERRULE OVER CABLE

**STEP 1**  
1. SLIDE METAL CRIMP FERRULE OVER CABLE

**STEP 2**  
1. STRIP CABLE TO DIMENSIONS AS SHOWN

**STEP 2**  
1. STRIP CABLE TO DIMENSIONS AS SHOWN

**STEP 3**  
1. FIT CONTACT OVER CENTRE CONDUCTOR TO BUTT AGAINST DIELECTRIC.  
2. CRIMP USING TOOL AS NOTES ON PAGE 1.

RECOMMENDED CENTRE CONTACT A/F HEX 1.75

**STEP 3**  
1. SLIDE ITEM 10 PUSHER SLEEVE OVER DIELECTRIC BEFORE FITTING THE CONTACT.  
2. FIT CONTACT OVER CENTRE CONDUCTOR TO BUTT AGAINST DIELECTRIC.  
3. CRIMP USING TOOL AS NOTES ON PAGE 1.

RECOMMENDED CENTRE CONTACT A/F HEX 1.75

**STEP 4**  
1. PRESS SUB-ASSEMBLY INTO BODY, UNTIL CONTACT IS FULLY LOCATED BY AN AUDIBLE CLICK.  
2. ENSURE THAT KNURLED HOUSING INSERTS BETWEEN THE DIELECTRIC AND CABLE BRAID.

HOUSING END UNDER BRAID

**STEP 4**  
1. PRESS SUB-ASSEMBLY INTO BODY, UNTIL CONTACT IS FULLY LOCATED BY AN AUDIBLE CLICK.  
2. ENSURE THAT KNURLED HOUSING INSERTS BETWEEN THE PUSHER SLEEVE AND CABLE BRAID.

HOUSING END UNDER BRAID

**STEP 5**  
1. SLIDE CRIMP FERRULE ALONG THE CABLE UNTIL IT BUTTS AGAINST THE HOUSING BODY.  
2. CRIMP USING TOOL AS NOTED ON PAGE 1.  
3. CRIMP DIMENSION AS SHOWN.

RECOMMENDED CRIMP SLEEVE A/F HEX 5.80

**STEP 5**  
1. SLIDE CRIMP FERRULE ALONG THE CABLE UNTIL IT BUTTS AGAINST THE BODY HOUSING.  
2. CRIMP USING TOOL AS NOTED ON PAGE 1.  
3. CRIMP DIMENSION AS SHOWN.

RECOMMENDED CRIMP SLEEVE A/F HEX 5.80

THIS DRAWING IS A CONTROLLED DOCUMENT.		DRN RITA ZUO 24 Feb 09	Tyco Electronics Corporation Kunshan, Jiangsu, PRC 215312
		CHK ANSON MA 24 Feb 09	
DIMENSIONS: MM		APPC BOB ZHAO 24 Feb 09	BNC STRAIGHT JACK CRIMP 50 OHM
TOLERANCES UNLESS OTHERWISE SPECIFIED:		PRODUCT SPEC 108-112000	
APPLICATION SPEC SHEET 2		SIZE CASE CODE DRAWING NO. A2 00779	RESTRICTED TO
MATERIAL SEE TABLE		WEIGHT	CUSTOMER DRAWING
FINISH SEE TABLE		SCALE NTS	SHEET 2 OF 2 REV C1

AMP 1471-9 REV 31MMR2000

1634511

A

RESTRICTED TO

C1