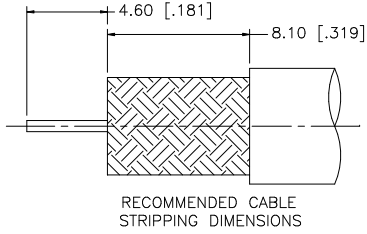
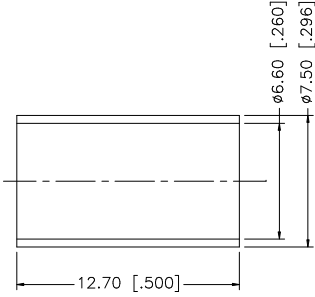
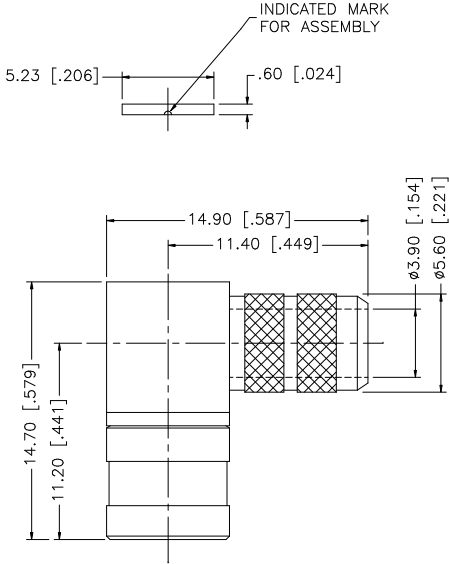


REV.	DATE	DESCRIPTION
NC	01/17/06	INITIAL RELEASE



- NOTE:
1. CRIMPED FERRULE
HEX CRIMP SIZE .255"
 2. CONTACT PIN TO SOLDER

DESCRIPTION	MATERIAL	FINISH	QTY	UNLESS OTHERWISE SPECIFIED DIMENSIONS ARE IN MILLIMETERS. DIMENSIONS IN [] ARE IN INCHES AND FOR CUSTOMER REFERENCE ONLY.	APPROVALS	DATE	Amphenol Connex							
8							MINI 75ohm SMB R/A CRIMP PLUG (FOR RG-59A/U, 59B/U, CABLE)							
7						PART DESCRIPTION								
6											PART NO.			
5	FERRULE	COPPER	GOLD	1							142336-75			
4	COVER	BRASS	GOLD	1							DWG. NO. 142336-75.DWG			
3	CONTACT PIN	BER. COPPER	GOLD	1			REV. NC							
2	INSULATOR	TEFLON	NATURAL	1			SIZE A							
1	BODY	BRASS	GOLD	1			SCALE NA							
				DO NOT SCALE DRAWING	CAD FILE	C:/142/142336-75.DWG								

UNLESS OTHERWISE SPECIFIED DIMENSIONS ARE IN MILLIMETERS. DIMENSIONS IN [] ARE IN INCHES AND FOR CUSTOMER REFERENCE ONLY.

UNLESS OTHERWISE SPECIFIED TOLERANCES FOR MILLIMETERS ARE:
0.5 - 8mm ± 0.20mm
8 - 30mm ± 0.40mm
30 - 120mm ± 0.50mm

UNLESS OTHERWISE SPECIFIED TOLERANCES FOR INCHES ARE:
.020 - .315 = ± 0.007"
.315 - 1.180 = ± 0.015"
1.180 - 4.724 = ± 0.020"

Amphenol Connex

**MINI 75ohm SMB R/A CRIMP PLUG
(FOR RG-59A/U, 59B/U, CABLE)**

142336-75

142336-75.DWG

REV. NC SIZE A SCALE NA