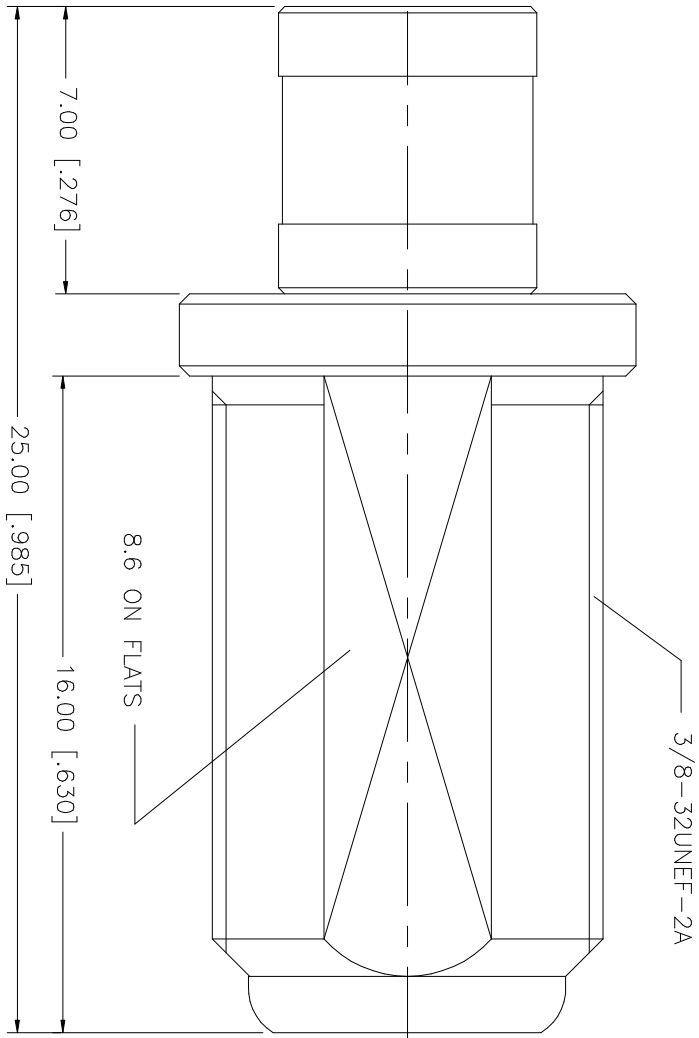


REV.	DATE
NC	04/05/06

DESCRIPTION
INITIAL RELEASE



DESCRIPTION	MATERIAL	FINISH	QTY	UNLESS OTHERWISE SPECIFIED DIMENSIONS ARE IN INCHES AND FOR CUSTOMER REFERENCE ONLY. TOLERANCES FOR MILLIMETERS ARE:	APPROVALS	DATE	PART DESCRIPTION		
8				0.5 - 8mm ± 0.20mm	DRAWN	04/05/06	Amphenol Connex SMB PLUG TO F JACK ADAPTER 242223		
7				8 - 30mm ± 0.40mm	G.R.S.				
6				30 - 120mm ± 0.50mm	CHECKED				
5				UNLESS OTHERWISE SPECIFIED TOLERANCES FOR INCHES ARE:	ISSUED				
4				.020 - .315 = ± 0.007"	SHEET	1 OF 1			
3	BER. COPPER	GOLD	1	.315 - 1.180 = ± 0.015"	CAD FILE				
2	TEFLON	NATURAL	1	1.180 - 4.724 = ± 0.020"	C:/242/242223.DWG				
1	BRASS	NICKEL	1	DO NOT SCALE DRAWING	DWG. NO.	242223.DWG		REV. NC	SIZE A