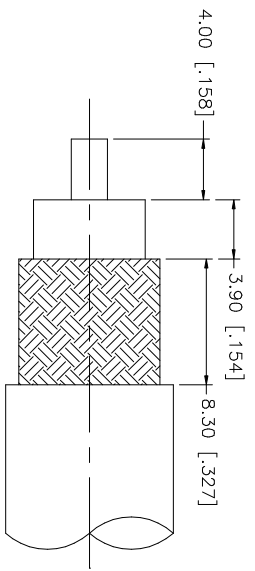
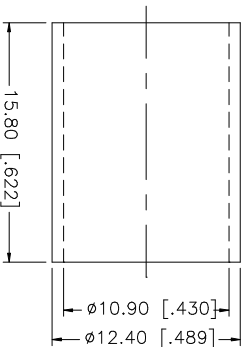
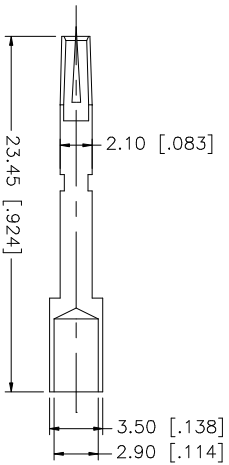
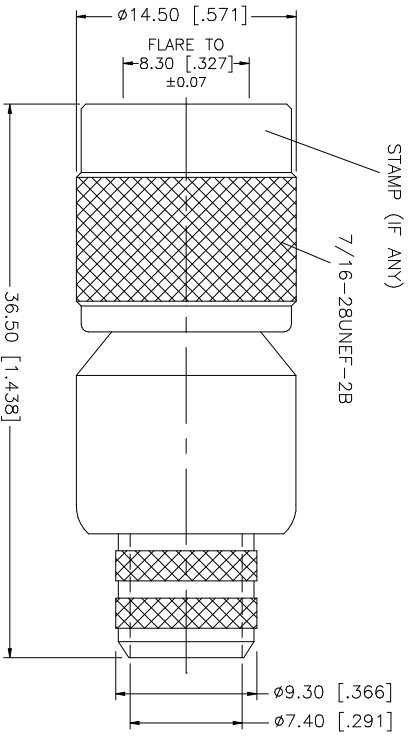


REV.	DATE
A	04/05/03

DESCRIPTION
UPDATE DRAWING FORMAT



RECOMMENDED CABLE STRIPPING DIMENSIONS



- NOTE:
1. CRIMPED FERRULE
HEX CRIMP SIZE .429"
 2. CONTACT PIN TO SOLDER
OR .118" HEX CRIMP

QTY	DESCRIPTION	MATERIAL	FINISH	QTY	DO NOT SCALE DRAWING
1	SHELL/BODY	BRASS	NICKEL	1	1.160 - 4.724 = ± 0.020"
1	INSULATOR	TEFLON	NATURAL	1	.315 - 1.180 = ± 0.015"
1	CONTACT PIN	PHOS. BRONZE	GOLD	1	.020 - .315 = ± 0.007"
1	GASKET	RUBBER	RED	1	UNLESS OTHERWISE SPECIFIED TOLERANCES FOR MILLIMETERS ARE: 0.5 - 8mm ± 0.20mm 8 - 30mm ± 0.40mm 30 - 120mm ± 0.50mm
1	FERRULE	COPPER	NICKEL	1	UNLESS OTHERWISE SPECIFIED TOLERANCES FOR MILLIMETERS ARE: 0.5 - 8mm ± 0.20mm 8 - 30mm ± 0.40mm 30 - 120mm ± 0.50mm
8					
9					

APPROVALS	DATE
G.R.S.	04/05/03

CAD FILE	DWG. NO.	REV.	SIZE	SCALE
C:/122/122393RP.DWG	122393RP.DWG	A	A	NA

Amphenol Connex

PART DESCRIPTION
TNC REVERSE POLARITY CRIMP PLUG
(FOR BELDEN 8214, 9913 LMR 400 CABLE)

PART NO. 122393RP