

**110-Series Heavy Action Toggle Switches**



The 110-Series is a compactly designed, versatile metal construction toggle switch. Features include single or double pole options, maintained or momentary construction with termination choices including solder lug end or bottom, wire leads and .250 tab terminals. The quick make/quick break contact mechanism makes the switch suitable for high voltage (125-250 volt) applications. This switch is popular within the Small Appliance, Floor Maintenance, and most low current AC/DC market segments.

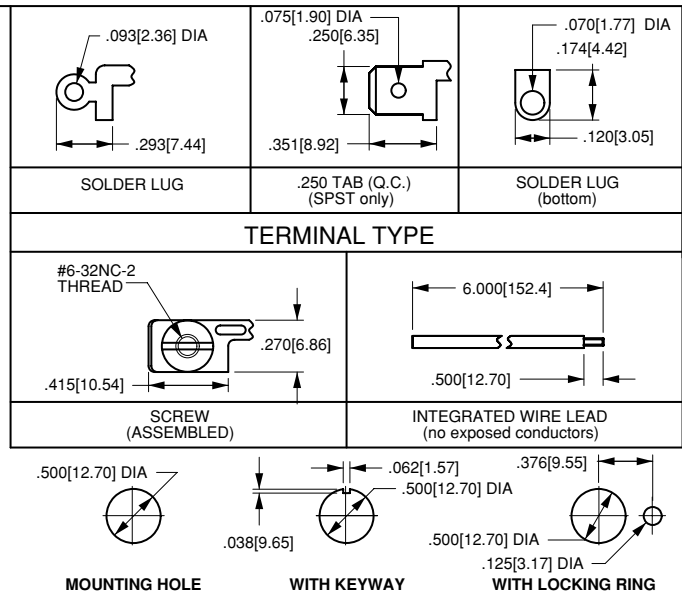
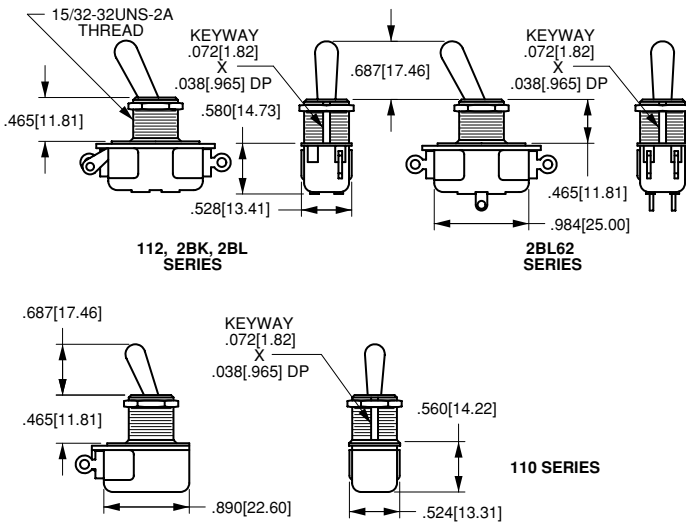
**Dielectric Strength**  
UL/CSA: 1000 - live to dead metal & opposite polarity

**Electrical Life**  
25,000 cycles

**Mechanical Life**  
15,000 cycles

**Operating Temperature**  
0°F to 150°F (-17.8°C to +65.6°C)

**110-Series Dimensional Specifications: in.[mm]**



**110-S - 73**

1 Base Part Number      2 Toggle / Bushing Length

1 BASE PART NUMBER: SERIES/POLES/CIRCUITRY/RATING/TERMINATION <sup>1</sup>				
	solder lug (end)	solder lug (bottom)	screw term.	wire leads
<b>single pole</b>				
ON-NONE-OFF	110	110-B	110-S	111-16
(ON)-NONE-OFF	110-M-NO	110-BM-NO	110-SM-NO	111-16M-NO
ON-NONE-(OFF)	110-M-NC	110-BM-NC	110-SM-NC	111-16M-NC
<b>double pole</b>				
ON-NONE-OFF	2BK62	-	-	2BK65
ON-NONE-ON	2BL62	-	-	2BL65
1A 250V, 3A 250V, AC/DC				
	solder lug (end)	solder lug (bottom)	screw term.	wire leads
<b>single pole</b>				
ON-NONE-ON	112	-	-	112-A
ON-NONE-(ON)	112-M	-	-	112-M-A

2 BAT TOGGLE/BUSHING LENGTH			
unsealed	sealed	toggle length	bushing length
52	57	0.375	0.343
63	68	0.500	0.465
73	78	0.687	0.465

NOTE 1 .250 tab termination also available. Consult factory for catalog number callout.