

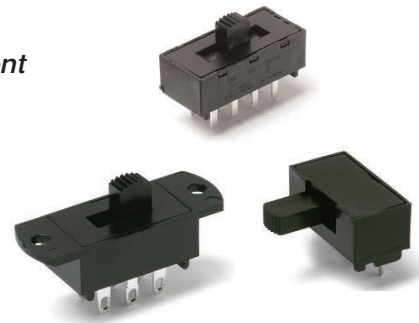
# C&K L Series Miniature Slide Switches

## Features/Benefits

- Positive detent
- Enclosed housing
- Maintained and momentary functions
- PC and panel mounting

## Typical Applications

- Communications equipment
- Lighting devices



Models Available



Slide

## Specifications

**CONTACT RATING:** Q contact material (LX0X, LX1X Models): 4 AMPS @ 125 V AC or 28 V DC; 2 AMPS @ 250 V AC; 0.5 AMP @ 125 V DC (UL/CSA). See page I-23 for additional ratings.

**ELECTRICAL LIFE:** 10,000 make-and-break cycles at full load.

**CONTACT RESISTANCE:** Below 10 m Ω typ. initial @ 2-4 V DC, 100 mA, for both silver and gold plated contacts.

**INSULATION RESISTANCE:** 10<sup>9</sup> Ω min.

**DIELECTRIC STRENGTH:** 1,000 Vrms min. @ sea level.

**NOTE:** Specifications and materials listed above are for switches with standard options.

For information on specific and custom switches, consult Customer Service Center.

## Materials

**HOUSING:** 6/6 nylon (UL94V-2), black.

**ACTUATOR:** 6/6 nylon (UL94V-2), black.

'13' actuator, natural (standard).

**CONTACTS:** Q contact material: Copper, silver plated. See page I-23 for additional contact materials.

**TERMINALS:** Q contact material: Copper, silver plated. See page I-23 for additional contact materials.

**CONTACT SPRING:** Music wire or stainless steel.

**TERMINAL SEAL:** Epoxy.

## Build-A-Switch

To order, simply select desired option from each category and place in the appropriate box. Available options are shown and described on pages I-20 thru I-23. For additional options not shown in catalog, consult Customer Service Center.

<p><b>Switch Function</b></p> <p>L202 (STD.) DPDT</p> <p>L203 (STD.) DP3T</p> <p>L101 SPST</p> <p>L102 SPDT</p> <p>L103 SP3T</p> <p>L104 SP4T</p> <p>L112 SPDT, mom.</p> <p>L113 SP3T, mom. to one end</p> <p>L123 SP3T, mom. to both ends</p> <p>L201 DPST</p> <p>L204 DP4T</p> <p>L212 DPDT, mom.</p>	<p><b>Actuator</b></p> <p>01 (STD.) .200" high</p> <p>02 .335" high</p> <p>03 .375" high</p> <p>05 .312" high</p> <p>11 .100" high</p> <p>12 Screwdriver slot</p> <p>13 Plunger without cap</p> <p>14 Plunger with .200" dia. cap</p> <p>15 Plunger with .310" dia. cap</p> <p>17 Plunger with .458" dia. cap</p> <p>19 Plunger with .590" dia. cap</p>	<p><b>Detent</b></p> <p>1 (STD.) With detent</p> <p>2 Without detent</p>	<p><b>Mounting Style</b></p> <p>MS (STD.) PC Thru-hole</p> <p>MA Right angle, PC thru-hole</p> <p>ML Right angle, PC thru-hole</p> <p>MV Right angle, PC thru-hole</p> <p>SS Panel with mounting ears</p> <p>TS Panel with integral mounting ears</p>	<p><b>Terminations</b></p> <p>02 (STD.) PC Thru-hole</p> <p>01 Solder lug with notch</p> <p>03 Solder lug with hole</p> <p>04 PC Thru-hole</p> <p>10 PC Thru-hole</p> <p>06 Wire wrap</p> <p>12 PC Thru-hole</p> <p>WC Wire lead</p>	<p><b>Contact Material</b></p> <p>Q (STD.) Silver</p> <p>B Gold</p> <p>G Gold over silver</p>	<p><b>Seal</b></p> <p>NONE (STD.) No seal</p> <p>E Epoxy seal</p>	<p><b>Cap Color</b></p> <p>2 (STD.) Black</p> <p>NONE No cap</p> <p>3 Red</p>
---	---	--	---	--	---	---	---

# C&K L Series Miniature Slide Switches

## SWITCH AND LOCK FUNCTION



NO. POLES	MODEL NO.	SWITCH FUNCTION	SCHEMATIC	AVAILABLE MOUNTING STYLES
SP	L101	SPST		ML, MS, SS
	L102	SPDT		ML, MS, SS
	L112	SPDT-MOM.		ML
	L103	SP3T		MA, MS, TS
	L113	SP3T-MOM. to one end		MA, MS, TS
	L123	SP3T-MOM. to both ends		MA, MS, TS
	L104	SP4T		MS

NO. POLES	MODEL NO.	SWITCH FUNCTION	SCHEMATIC	AVAILABLE MOUNTING STYLES
DP	L201	DPST		MA, MS, SS
	L202 (STD.)	DPDT		MA, MS, SS
	L212	DPDT-MOM.		MV
	L203 (STD.)	DP3T		MS, TS
	L204	DP4T		MS

NOTE: and MOM. in table indicates momentary action.

All models with all options when ordered with 'G' or 'Q' contact material.

Models with '01' termination option only.

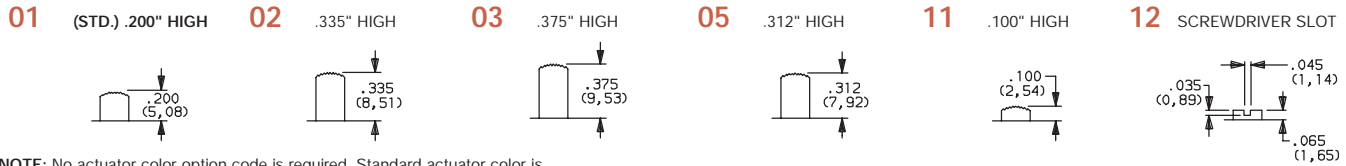
Contacts make on side actuator thrown.

Slide

## ACTUATOR

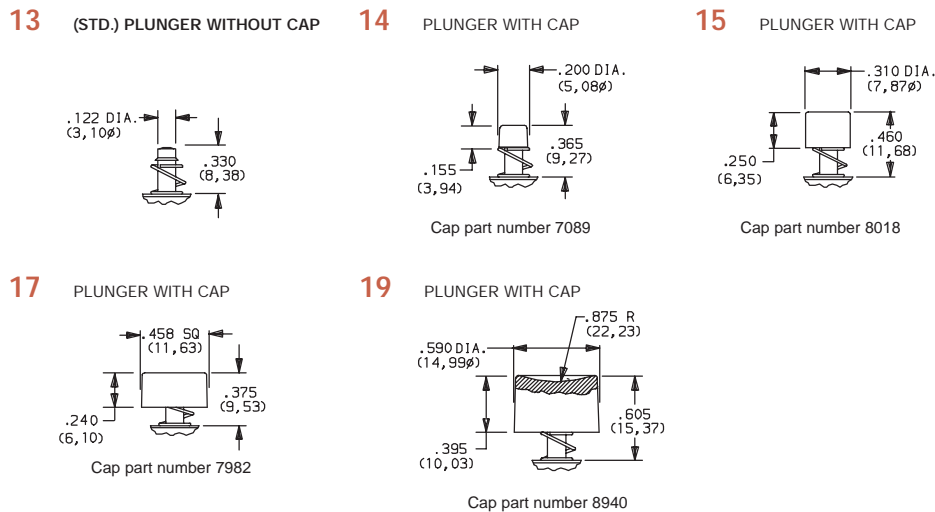


### ACTUATOR OPTIONS FOR 'MS, MA, ML, SS, & TS' MOUNTING STYLES



NOTE: No actuator color option code is required. Standard actuator color is black, other colors and heights available, consult Customer Service Center. See pages I-21 and I-22 for available mounting styles.

### ACTUATOR OPTIONS FOR 'MV' MOUNTING STYLE



OPTION CODE	ACTUATOR CAP COLORS
2	(STD.) BLACK
NONE	01-13, 23 ACTUATORS
3	RED

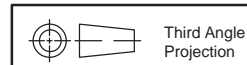
Other colors available, consult Customer Service Center.

### ACTUATOR CAPS

Caps supplied are not installed standard. To order actuator options '14 thru 29,' select desired cap color from chart and place option code in last box of ordering format. Leave box empty for all other actuator options. Caps may also be ordered separately and user installed, see pages I-23 and I-24. Specify the four digit part number and desired cap color. For switches without caps, order '13' or '23' actuator option. Cap finish: gloss (excluding square cap part number 7982, finish: matte).

### SPLASH CAPS

New protective splash caps for PC mounted slide switches are available separately and reusable. They provide splash protection during soldering and cleaning processes. To order specify correct part number, see page I-24.



Dimensions are shown: IN (mm)  
Dimensions subject to change

# C&K L Series Miniature Slide Switches

## DETENT

### 1 (STD.) WITH DETENT

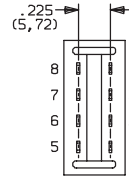
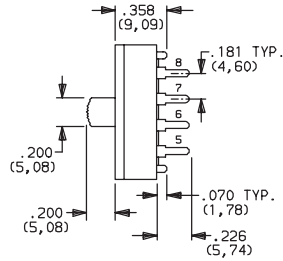
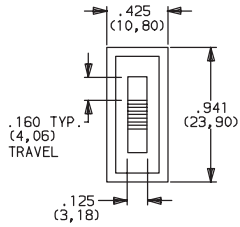
Standard with all maintained models: L101, L102, L103, L104, L113, L201, L202, L203, L204, L161, L162, L261 and L262.

### 2 (STD.) WITHOUT DETENT

Standard with all momentary models: L112, L123, L211, and L212.

## MOUNTING STYLE

### MS (STD.) PC THRU-HOLE

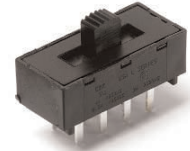


#### AVAILABLE WITH:

**Models:** L101, L102, L112, L103, L113, L123, L201, L202, L203, L104 and L204  
**Terminations:** 01, 02, 03, 06, 10 and 12  
**Actuators:** 01, 02, 03, 05, 09, 11 and 12

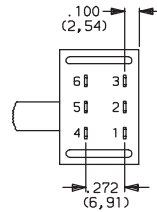
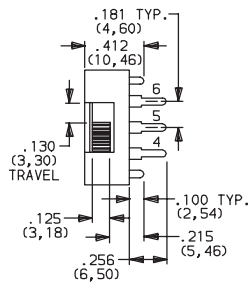
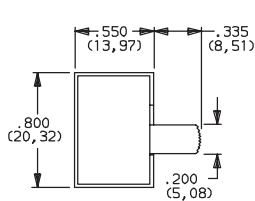
#### PC MOUNTING

For mounting information, see TERMINATIONS section, page I-22.  
Splash caps are available separately and reusable, see page I-24.



L203011MS02Q  
DP3T

### MA RIGHT ANGLE, PC THRU-HOLE



#### AVAILABLE WITH:

**Models:** L201, L202, L113 and L123  
**Terminations:** 04  
**Actuators:** 02 and 12

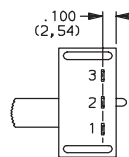
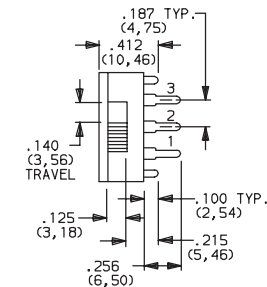
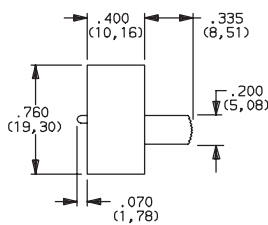
#### PC MOUNTING

For mounting information, see TERMINATIONS section, page I-22.  
Splash caps are available separately and reusable, see page I-24.



L202021MA04Q  
Horizontal Actuation  
DPDT

### ML RIGHT ANGLE, PC THRU-HOLE



#### AVAILABLE WITH:

**Models:** L201, L202, L113 and L123  
**Terminations:** 04  
**Actuators:** 02 and 12

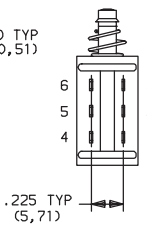
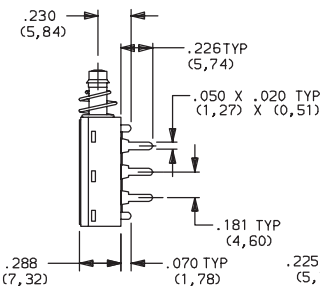
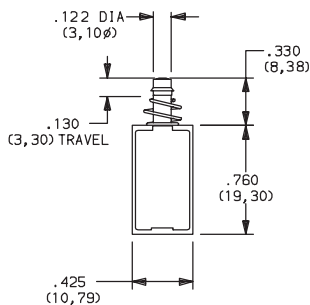
#### PC MOUNTING

For mounting information, see TERMINATIONS section, page I-22.  
Splash caps are available separately and reusable, see page I-24.



L102021ML04Q  
Horizontal Actuation  
SPDT

### MV RIGHT ANGLE, PC THRU-HOLE



#### AVAILABLE WITH:

**Models:** L112 and L212  
**Terminations:** 02, 06, 10 and 12  
**Actuators:** 13 thru 19

#### PC MOUNTING

For mounting information, see TERMINATIONS section, page I-22.  
Splash caps are available separately and reusable, see page I-24.



L212132MV02Q  
DPDT



Dimensions are shown: IN (mm)  
Dimensions subject to change



# C&K L Series Miniature Slide Switches

## CONTACT MATERIAL



OPTION CODE	CONTACT AND TERMINAL MATERIAL	RATINGS	
<b>Q (STD.)</b>	SILVER <sup>2</sup>	POWER	LX0X, LX1X MODELS: 4 AMPS @ 125 V AC or 28 V DC; 2 AMPS @ 250 V AC; 0.5 AMP @ 125 V DC (UL/CSA). LX6X MODELS: 4 AMPS @ 125 V AC or 28 V DC; 2 AMPS @ 250 V AC (UL/CSA).
<b>B</b>	GOLD <sup>1</sup>	LOW LEVEL/DRY CIRCUIT	0.4 VA MAX. @20 V AC OR DC max.
<b>G</b>	GOLD OVER SILVER <sup>3</sup>	LOW LEVEL/DRY CIRCUIT OR POWER	LX0X, LX1X MODELS: 0.4 VA MAX. @ 20 V AC or DC MAX. or 4 AMPS @ 125 V AC or 28 V DC; 2 AMPS @ 250 V AC; 0.5 AMP @ 125 V DC (UL/CSA). LX6X MODELS: 0.4 VA MAX. @ 20 V AC or DC MAX. or 4 AMPS @ 125 V AC or 28 V DC; 2 AMPS @ 250 V AC (UL/CSA).


CONTACT MATERIAL/APPLICATION RECOMMENDATIONS—SEE SECTION N.

<sup>1</sup> CONTACTS & TERMINALS: Copper, with gold plate over nickel plate.

<sup>2</sup> CONTACTS & TERMINALS: Copper, silver plated (standard with all termination options).

<sup>3</sup> CONTACTS & TERMINALS: Copper, with gold plate over nickel plate over silver plate.

All models   with all options (except '01' termination) when ordered with 'G' or 'Q' contact material.

Models with '01' termination option  only.

**NOTE:** 'G' contact material is equivalent to both 'B' and 'Q' contact materials.

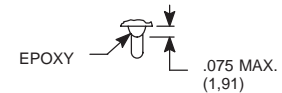


Slide

## SEAL

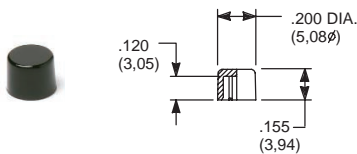
**NONE** (STD.) NO SEAL

**E** EPOXY SEAL



## AVAILABLE HARDWARE

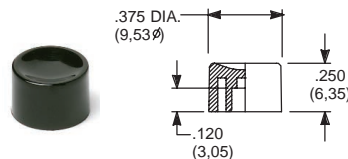
Cap  
Compatible with 13-19 actuators



PART NO.  
**708902000** BLACK  
**708903000** RED

Material: Nylon  
Finish: Gloss

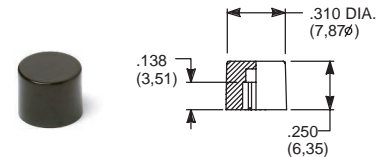
Cap  
Compatible with 13-19 actuators



PART NO.  
**752702000** BLACK  
**752703000** RED

Material: Nylon  
Finish: Gloss

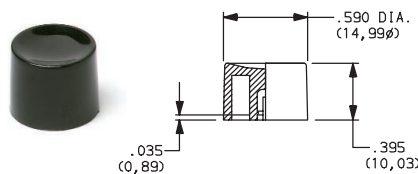
Cap  
Compatible with 13-19 actuators



PART NO.  
**801802000** BLACK  
**801803000** RED

Material: Nylon  
Finish: Gloss

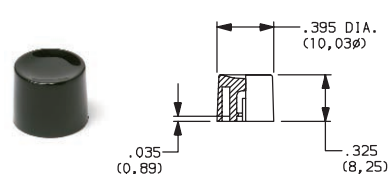
Cap  
Compatible with 13-19 actuators



PART NO.  
**894002000** BLACK  
**894003000** RED

Material: Nylon  
Finish: Gloss

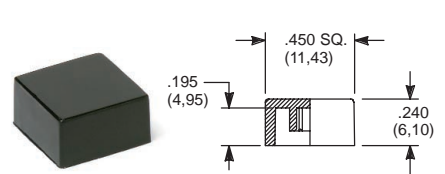
Cap  
Compatible with 13-19 actuators



PART NO.  
**894102000** BLACK  
**894103000** RED

Material: Nylon  
Finish: Gloss

Cap  
Compatible with 13-19 actuators



PART NO.  
**484602000** BLACK  
**484603000** RED

Material: Nylon  
Finish: Gloss

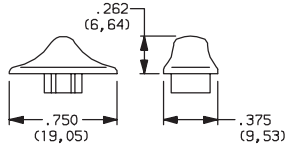
PART NO.  
**798202263** BLACK  
**798203000** RED

Material: Nylon  
Finish: Matte

# C&K L Series Miniature Slide Switches

## AVAILABLE HARDWARE

Cap  
Compatible with 01-05 actuators



PART NO.  
**120100602** BLACK  
Material: Nylon  
Finish: Matte

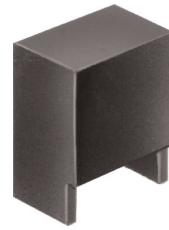
Splash Cap



Fits 'MS' mounting style,  
LXX1 & LXX2 models only.

PART NO.  
**120100200**  
Material: Nylon

Splash Cap



Fits 'MV' mounting style,  
LX1X models only.

PART NO.  
**120100300**  
Material: Nylon



Slide

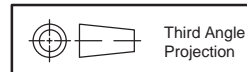
Splash Cap



Fits 'MA' mounting style,  
LXX3 models only.

PART NO.  
**120100400**  
Material: Nylon

**NOTE:** Other colors available,  
consult Customer Service Center.



Third Angle  
Projection

Dimensions are shown: IN (mm)  
Dimensions subject to change