

4

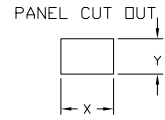
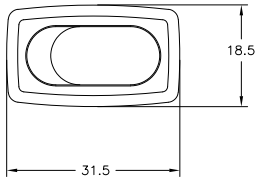
3

2

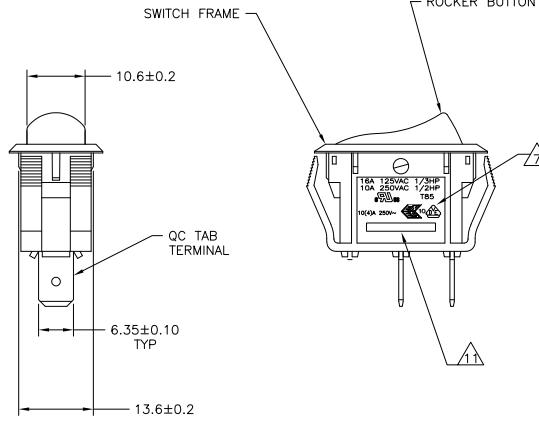
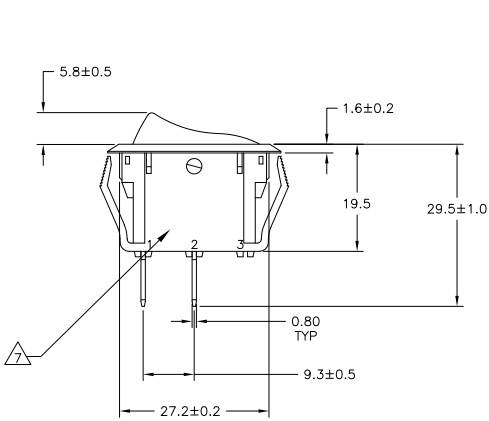
1

THIS DRAWING IS UNPUBLISHED. RELEASED FOR PUBLICATION. ALL RIGHTS RESERVED.

LOC	DIST	REVISIONS		
F	LNK	DESCRIPTION	DATE	BY
AD	00			
F2		REVISED PER ECO-11-004917	11MAR11	RK HMR



4.00-5.00	28.0-0.1	13.8+0.1
3.00-4.00	27.8-0.1	13.8+0.1
0.75-3.00	27.6-0.1	13.8+0.1
PANEL THICKNESS	X	Y



SWITCH FUNCTION A1
CIRCUIT DIAGRAM



1571091-1 SHOWN

DIMENSIONS:		TOLERANCES UNLESS OTHERWISE SPECIFIED:		OTHER	
mm	0 PL	±	—	DRW	01AMP04
	1 PL	±	0.30	DSY	—
	2 PL	±	0.05	CHK	—
	3 PL	±	—	DESIGNER	J. MOSIER
	4 PL	±	—	DATE	—
	ANGLES	±	—	PRODUCT SPEC	—
				APPLICATION SPEC	—
MATERIAL	FINISH			WEIGHT	—
1	2			SIZE	A2
				DATE CODE	00779
				DRAWING NO	C=1571091
				RESTRICTED TO	—
				CUSTOMER DRAWING	—
				SCALE	2:1
				SHEET	1 of 3
				REV	F2

TE TE Connectivity

POWER ROCKER SWITCH, 13.8mm X 27.6mm
PANEL CUT-OUT SIZE, SINGLE POLE, SINGLE
THROW, TWO TERMINALS, NON-ILLUMINATED

4

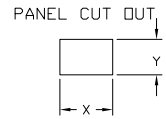
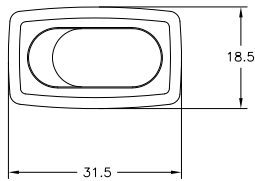
3

2

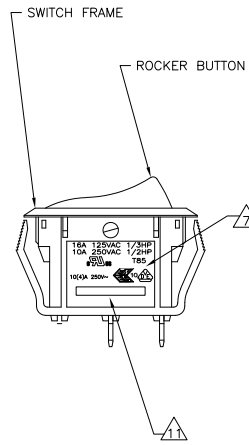
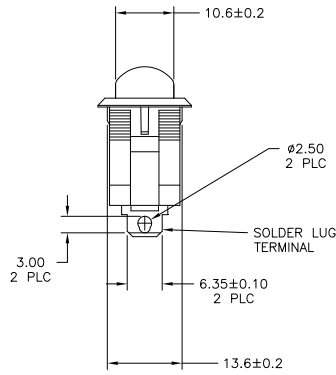
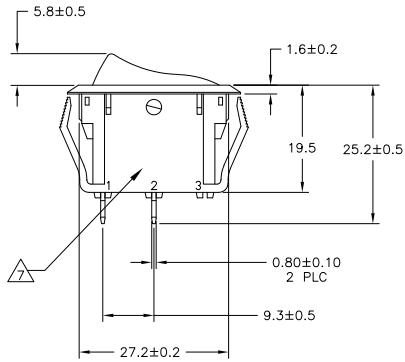
1

THIS DRAWING IS UNPUBLISHED. RELEASED FOR PUBLICATION. ALL RIGHTS RESERVED.

LOC	DIST	REVISIONS		
F	LR	DESCRIPTION	DATE	BY
AD	00	SEE SHEET 1	-	-



4.00-5.00	28.0-0.1	13.8+0.1
3.00-4.00	27.8-0.1	13.8+0.1
0.75-3.00	27.6-0.1	13.8+0.1
PANEL THICKNESS	X	Y



SWITCH FUNCTION A1
CIRCUIT DIAGRAM



1571091-4 SHOWN

THIS DRAWING IS A CONTROLLED DOCUMENT.		DRW: BSY	DATE: 01APR04
DIMENSIONS: mm		CHK: J. MOSIER	NAME: TE Connectivity
TOLERANCES UNLESS OTHERWISE SPECIFIED:		PRODUCT SPEC: -	APPLICATION SPEC: -
0 PLC	±	SIZE: A2	DATE CODE: 00779
1 PLC	± 0.30	DRAWING NO: C=1571091	RESTRICTED TO: -
2 PLC	± 0.05	CUSTOMER DRAWING	SCALE: 2:1
3 PLC	±		SHEET: 2 of 3
4 PLC	±		REV: F2
ANGLES	±		
FINISH	2		

4

3

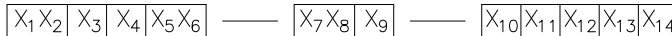
2

1

THIS DRAWING IS UNPUBLISHED. RELEASED FOR PUBLICATION. ALL RIGHTS RESERVED.

LOC	DIST	REVISIONS					
AD	00	F	LN	DESCRIPTION	DATE	BY	APPD
-	-	-	-	SEE SHEET 1	-	-	-

LEGACY PART NUMBER



SWITCH TYPE: $X_1X_2 = PR$ - POWER ROCKER

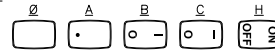
SECONDARY ROCKER COLOR: $X_{12} = \emptyset$ - NOT APPLICABLE

NOMINAL PANEL CUT OUT SIZE: $X_5 = B$ - 13.8x27.6

NUMBER OF POLES: $X_4 = S$ - SINGLE

SWITCH FUNCTION: $X_5X_6 = A1$ - ON-OFF, WITH OPAQUE SINGLE-COLOR ROCKER BUTTON.

LEGEND TEXT PATTERN: $X_{13} =$



CURRENT RATING: $X_7X_8 = 16 - \Delta 6$

TERMINAL TYPE: $X_9 = E$ - QC TAB
 L - SOLDER LUG

LEGEND TEXT COLOR: $X_{14} = \emptyset$ - NOT APPLICABLE



FRAME COLOR: $X_{10} = B$ - BLACK
 W - WHITE

ROCKER COLOR: $X_{11} = B$ - BLACK
 G - GREEN
 R - RED
 W - WHITE

1. MATERIALS:
ROCKER BUTTON & HOUSING: NYLON 66, UL 94 V-2.
TERMINAL, ACTIVE CONTACTOR: COPPER ALLOY PER ASTM B152/B152M
PLUNGER: COPPER ALLOY PER ASTM B036
SPRING: STEEL WIRE PER ASTM A228/A228M
CONTACT: SILVER-TIN OXIDE

2. FINISH:
ACTIVE CONTACTOR & TERMINALS: 1.0µm MIN SILVER
PLUNGER: 3.0µm MIN NICKEL

3. ELECTRICAL SPECIFICATIONS:
CURRENT & VOLTAGE
CONTACT RESISTANCE (INITIAL): <50mΩ
DIELECTRIC STRENGTH (INITIAL): >1000 VAC, 1 MINUTE
INSULATION RESISTANCE (INITIAL): >100MΩ MIN (500VDC BETWEEN OPEN CONTACTS)
INRUSH CURRENT: 50A / 3msec (CAPACITIVE LOAD)
ELECTRICAL LIFE ENDURANCE: >6000 OPERATIONS,
TEMPERATURE RISE AT TERMINALS: <30°C, 6000 OPERATIONS
(AMBIENT CONDITIONS: 25±2°C AND 65±5%RH)

4. MECHANICAL SPECIFICATIONS:
ACTUATING FORCE: 300g MIN, 700g MAX
OPERATING LIFE ENDURANCE: >100,000 OPERATIONS
TERMINAL STRENGTH : >2.5kg- SOLDER LUG
>10.0kg- QC TAB

5. **ENVIRONMENTAL SPECIFICATIONS:**
AMBIENT TEMPERATURE: -20°C TO +85°C
HUMIDITY: MAX 85%
SALT SPRAY: NO REMARKABLE RUST IN METAL PARTS. (5% SALT / 35°C 24HRS)
SHOCK: NO MECHANICAL DEFECT OR DAMAGE. (100g / 10MSEC/ X,Y,Z 3 TIMES)
VIBRATION: NO MECHANICAL DEFECT OR DAMAGE. (10-55Hz / 1.5mm/ X,Y,Z 2HRS)
- 6.** UL: 16A@125VAC 1/3HP / 10A@250VAC 1/2HP
ENEC: 10(4)A 250V~
- 7.** ELECTRICAL RATINGS, APPROVED AGENCY LOGOS, TERMINAL IDENTIFICATION NUMBERS, MOLDED APPROXIMATELY AS SHOWN ON THE SIDES OF THE SWITCH HOUSING.
8. COMPONENT-RECOGNIZED TO US & CANADIAN STANDARDS
UL FILE NO. E46765
9. COMPONENT-RECOGNIZED TO EUROPEAN STANDARDS
(ENEC & VDE) MARKS LICENSE NO 40020315
10. ROHS 2002/95/EC COMPLIANT
- 11.** TE CONNECTIVITY LOGO LOCATED APPROXIMATELY AS SHOWN

1	PRBSA1-16F-BROHW	6-1571091-0
2	PRBSA1-16L-BR000	5-1571091-8
1	PRBSA1-16F-BR000	5-1571091-7
1	PRBSA1-16F-BW0HB	1-1571091-2
1	PRBSA1-16F-BW000	1-1571091-1
1	PRBSA1-16F-BB0HW	1571091-9
2	PRBSA1-16L-BB0CW	1571091-6
2	PRBSA1-16L-BB0BW	1571091-5
2	PRBSA1-16L-BB000	1571091-4
1	PRBSA1-16F-BB0CW	1571091-3
1	PRBSA1-16F-BB0BW	1571091-2
1	PRBSA1-16F-BB000	1571091-1
SHEET REF.	LEGACY PART NUMBER	PART NUMBER

THIS DRAWING IS A CONTROLLED DOCUMENT. DIM STAMPED

DIMENSIONS: mm	TOLERANCES UNLESS OTHERWISE SPECIFIED:	DRW: BSY	CHK: J. MOSIER	DATE: --
0. PLG ± .1	1. PLG ± 0.30	APP: JIP	NAME: --	REV: --
1. PLG ± 0.30	2. PLG ± 0.05	PRODUCT SPEC: --	APPLICATION SPEC: --	SIZE: A2
3. PLG ± .1	3. PLG ± .1	WEIGHT: --	DATE CODE: --	DRAWING NO: C=1571091
4. PLG ± .1	4. PLG ± .1	MATERIAL: --	FINISH: --	RESTRICTED TO: --
MATERIAL: --	FINISH: --	CUSTOMER DRAWING	SCALE: 1:1	SHEET: 3 of 3
			REV: F2	

TE Connectivity
POWER ROCKER SWITCH, 13.8mm X 27.6mm
PANEL CUT-OUT SIZE, SINGLE POLE, SINGLE THROW, TWO TERMINALS, NON-ILLUMINATED