



AML21BBA2AB



AML21 Series, Electronic Control Pushbutton, Square, Standard Bezel, Unlighted, SPDT, Alternate Action, Snap in panel mount

Features

- 1, 2, or 4 poles.
- Silver or gold contacts.
- Full guard bezel option.
- Momentary or 2-level alternate action (push-on, push-off).
- UL recognized, CSA certified.
- Lamps can be furnished installed or ordered separately.
- Lamp circuit independent of switch circuit.

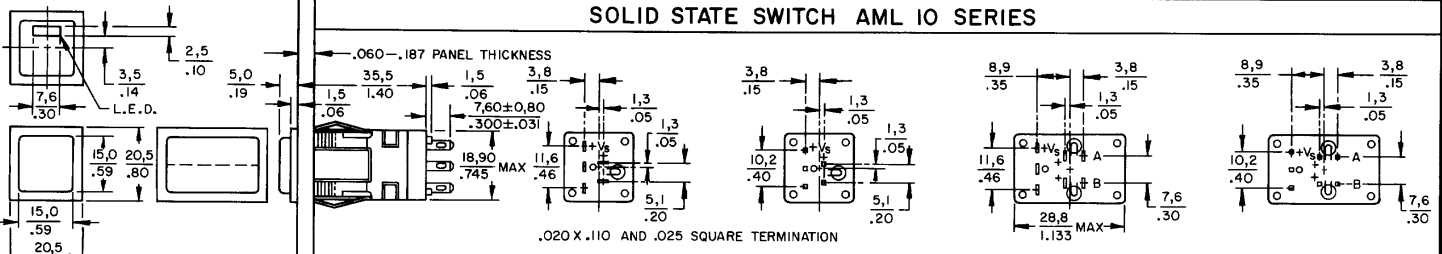
Notice

Button caps for MICRO SWITCH™ AML Pushbuttons are sold separately. Please see the links at the left for information on the buttons caps and other AML accessories.

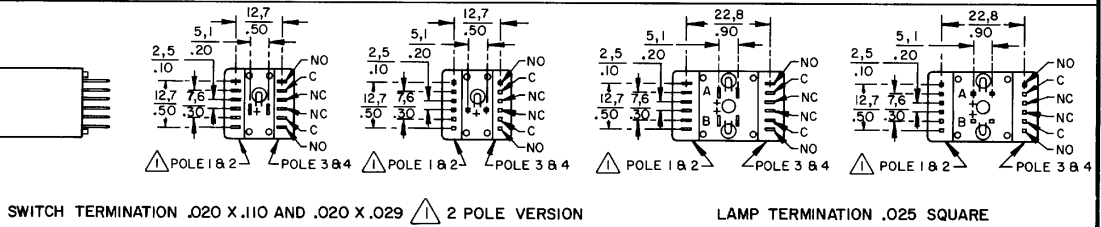
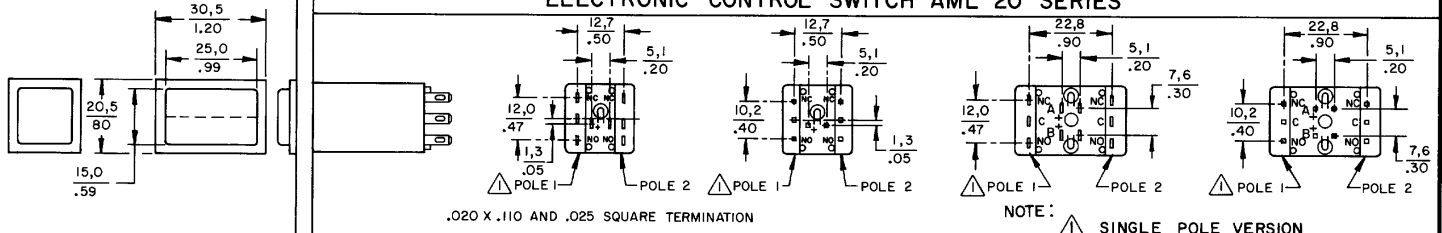
Product Specifications	
Product Type	MICRO SWITCH™ Pushbutton
Housing Type	Square
Circuitry	SPDT
Action	Alternate action
Mounting	Snap-in Panel
Lamp Type	Unlighted
Termination	.110 x .020 (Solder or Quick-Connect)
Ampere/Voltage Range (Resistive Load)	0.4-2 A @ 0.5-30 Vdc, 0.4-2 A @ 0.5 -250 Vac, 0.4-3 A @ 0.5-125 Vac
LED/Lamp/Neon Voltage	No Lamp Installed
Comment	use AML51 button
Availability	Global
UNSPSC Code	30211913
UNSPSC Commodity	30211913 Push button switches
Series Name	AML21

AML PUSHBUTTON AND INDICATOR SERIES

SOLID STATE SWITCH AML 10 SERIES

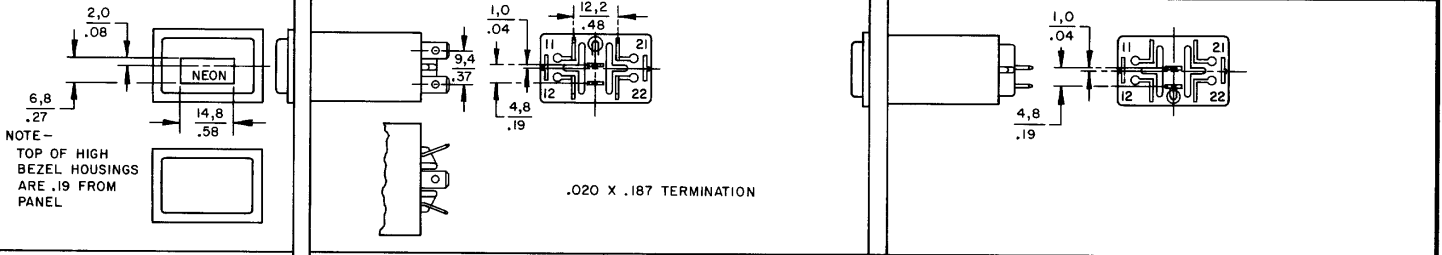


ELECTRONIC CONTROL SWITCH AML 20 SERIES

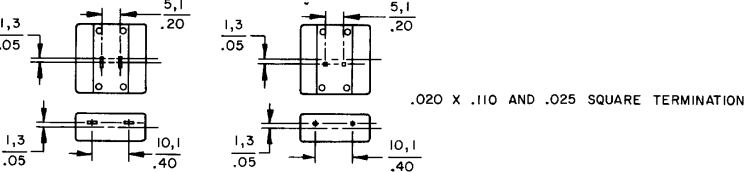
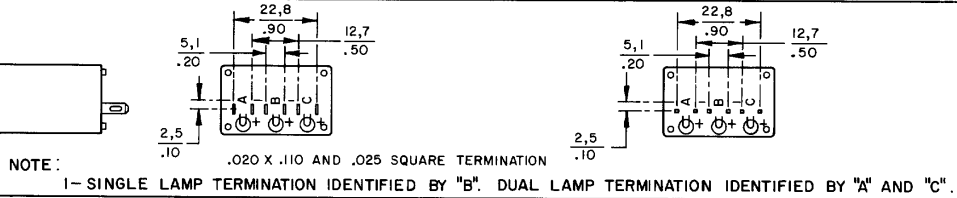
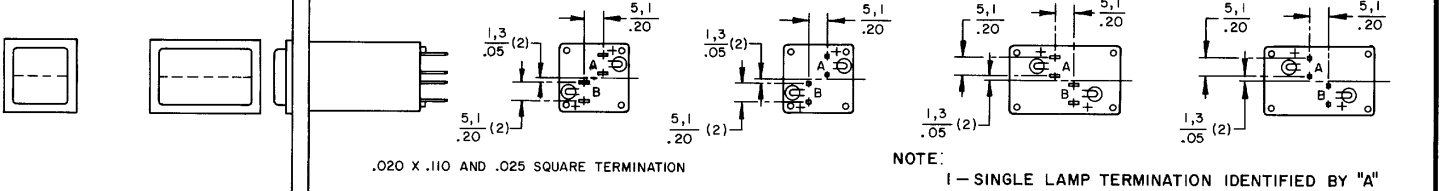


POWER SWITCH AML 30 SERIES

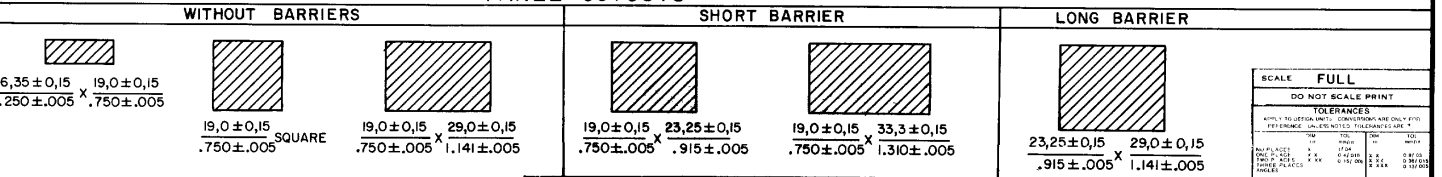
LINE POWER IND AML 43 SERIES



INDICATORS AML 40 SERIES



PANEL CUTOUTS



SCALE FULL

DO NOT SCALE PRINT

TOLERANCES

APPLY TO METRIC UNITS. DIMENSIONS ARE ONLY GIVEN IN REFERENCE UNLESS NOTED OTHERWISE

DESIGN UNITS: METRIC US CUSTOMARY

THIRD ANGLE PROJECTION

WEIGHT

CATALOG LISTING: AML 10 20 30 40 40

AML 10 20 30 40 SERIES CHART 1

RELEASE NO. CO-78488

REPLACES & 40 SERIES

ISSUE 6

REVISIONS:

- A 8098291
- B 204477
- C 201568
- D 20694
- E 202971
- F 3078801

DATE: JUN 94

DESIGNER: JAE

DATE: 11 JUL 94

MASTER REDUCED

THIS DRAWING COVERS A PROPRIETARY ITEM AND IS THE PROPERTY OF MICRO SWITCH A DIVISION OF HONEYWELL. THIS DRAWING IS NOT TO BE COPIED OR USED WITHOUT THE APPROVAL OF MICRO SWITCH.

FED. MFG CODE 31923

MICRO SWITCH
a Honeywell Division

AML PUSHBUTTONS & INDICATORS

CATALOG LISTING
AML 10 20 30 40
SERIES CHART 1