



AML21CBA2AA

Image Not Available

AML21 Series, Electronic Control Pushbutton, Square, Standard Bezel, Lighted, 1 Incandescent Lamp, SPDT, Momentary Action, Snap in panel mount

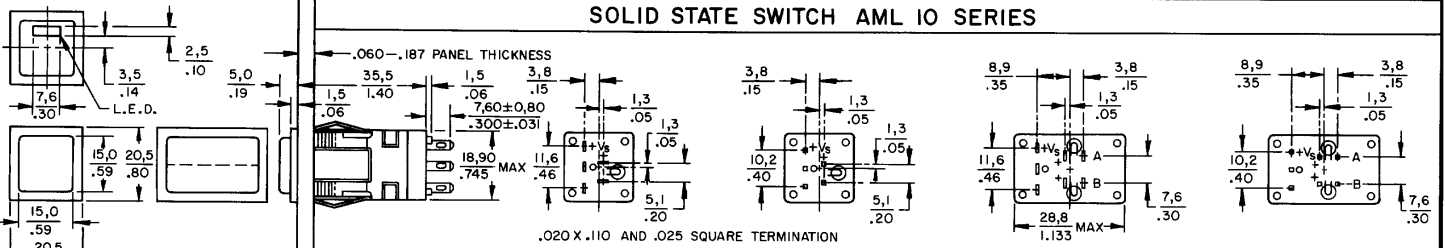
Features

- 1, 2, or 4 poles.
- Silver or gold contacts.
- Full guard bezel option.
- Momentary or 2-level alternate action (push-on, push-off).
- UL recognized, CSA certified.
- Lamps can be furnished installed or ordered separately.
- Lamp circuit independent of switch circuit.

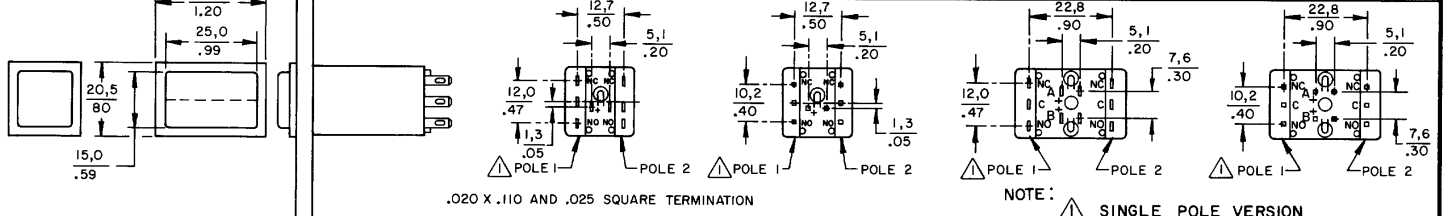
Product Specifications	
Product Type	MICRO SWITCH™ Pushbutton
Housing Type	Square
Circuitry	SPDT
Action	Momentary Action
Mounting	Snap-in Panel
Lamp Type	Lighted, 1 Incandescent Lamp
Termination	.110 x .020 (Solder or Quick-Connect)
Ampere/Voltage Range (Resistive Load)	0.4-2 A @ 0.5-30 Vdc, 0.4-2 A @ 0.5 -250 Vac, 0.4-3 A @ 0.5-125 Vac
LED/Lamp/Neon Voltage	No Lamp Installed
Comment	use AML51 button
Availability	Global
UNSPSC Code	30211913
UNSPSC Commodity	30211913 Push button switches
Series Name	AML21

AML PUSHBUTTON AND INDICATOR SERIES

SOLID STATE SWITCH AML 10 SERIES

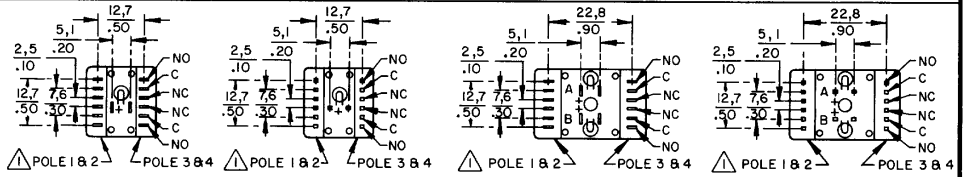


ELECTRONIC CONTROL SWITCH AML 20 SERIES



.020 X .110 AND .025 SQUARE TERMINATION

NOTE: SINGLE POLE VERSION

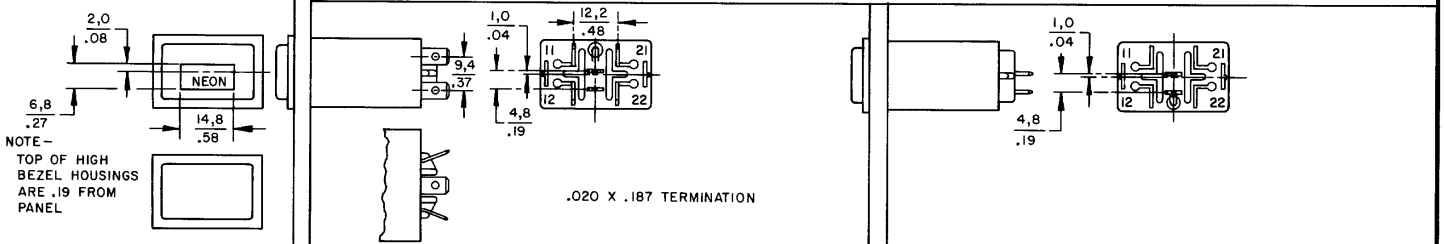


SWITCH TERMINATION .020 X .110 AND .020 X .029 2 POLE VERSION

LAMP TERMINATION .025 SQUARE

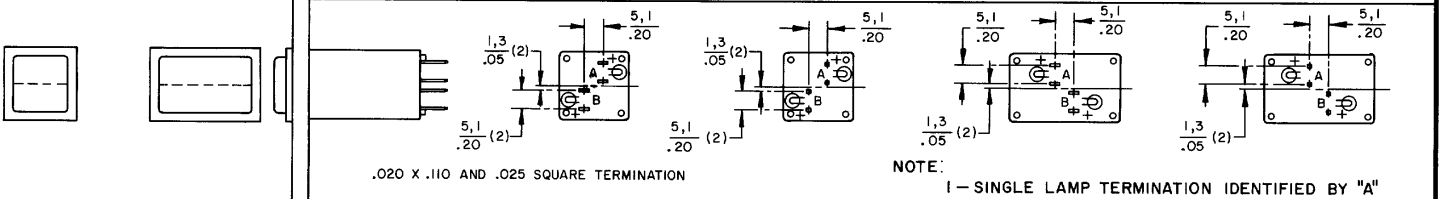
POWER SWITCH AML 30 SERIES

LINE POWER IND AML 43 SERIES



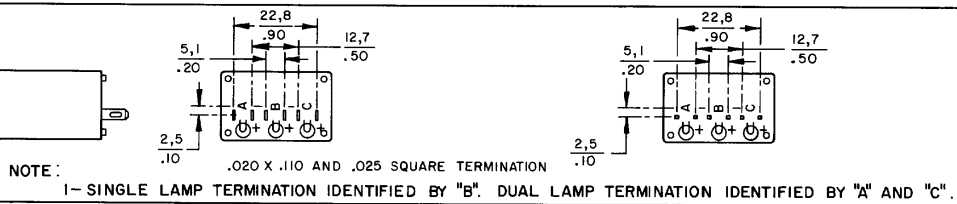
.020 X .187 TERMINATION

INDICATORS AML 40 SERIES

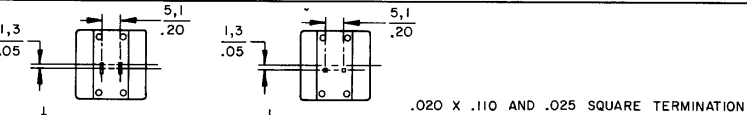


.020 X .110 AND .025 SQUARE TERMINATION

NOTE: SINGLE LAMP TERMINATION IDENTIFIED BY "A"



NOTE: SINGLE LAMP TERMINATION IDENTIFIED BY "B". DUAL LAMP TERMINATION IDENTIFIED BY "A" AND "C".

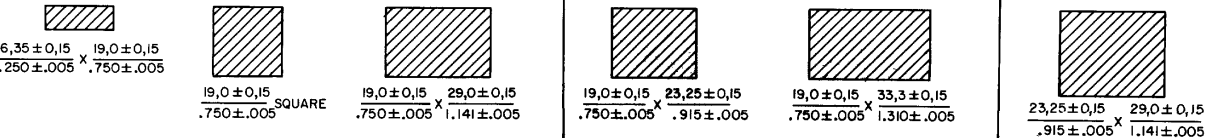


.020 X .110 AND .025 SQUARE TERMINATION

WITHOUT BARRIERS

SHORT BARRIER

LONG BARRIER



SCALE FULL	
DO NOT SCALE PRINT	
TOLERANCES	
APPLY TO METRIC UNITS. DIMENSIONS ARE ONLY GIVEN IN REFERENCE UNLESS NOTED OTHERWISE ARE IN INCHES.	
FINISHES	FINISH
PURCHASE	2.0
DRY PACK	2.0
POWER PLACES	2.0
PROTECT	2.0
DESIGN UNITS	<input checked="" type="checkbox"/> METRIC <input type="checkbox"/> US CUSTOMARY
THIRD ANGLE PROJECTION	
WEIGHT	

CATALOG LISTING AML 10 20 30 40 40
 AML 10 20 30 40 SERIES CHART 1
 PAGE 1 OF 1
 ISSUE 6
 REVISIONS
 A 8098291
 B 204477
 C 201568
 D 20694
 E 202971
 30758 01
 DRAWN JAE
 CHECK JAE
 11 JUL 94
 RASTER
 JAK 17 JUN 94
 MICRO SWITCH
 a Honeywell Division
 FED. MFG CODE 31923

MASTER REDUCED

MICRO SWITCH
a Honeywell Division

AML PUSHBUTTONS & INDICATORS

CATALOG LISTING
AML 10 20 30 40
SERIES CHART 1